



Owner Manual



Model 000-163-224

MAN-47906 REV 0

September 2025

TABLE OF CONTENTS

1 - GENERAL INFORMATION	3
Contact Information	4
Warnings	5
2 – OPERATING INSTRUCTIONS	6
Begin Cleaning	7
3 – TOOL MAINTENANCE	9
Cleaning Bar Jet Assembly	9
Cleaning the Filter Cartridge and Orifice Plate	10
4 – ASSEMBLIES AND PARTS LISTS	14
000-163-224 DriMaster ClearView Assembly	15
000-061-221 Knob Assembly	17
000-068-667 Hide-a-Hose Assembly	18
000-061-144 Accessory Handle Assembly	19
5 – HOW TO ORDER PARTS	20
6 – WARRANTY INFORMATION	21

HydraMaster

Everett WA USA 98203

No part of this manual may be reproduced or used in any form or by any means (i.e. graphic, electronic, photocopying or electronic retrieval systems) without the express written permission of HydraMaster. Specifications and information in this document are subject to change without notice. All rights reserved. © 2025 HydraMaster.

Document number: 000-182-308

1 - GENERAL INFORMATION

Congratulations on purchasing the very latest in upholstery cleaning technology.

The patented DriMaster ClearView Upholstery Tool is perfect for cleaning upholstery, fabric and stairs. It has no trigger valve and never needs a separate dry pass. *



The tool's new design incorporates light weight, durable materials, giving the tool increased levels of strength and comfort.

The DriMaster ClearView Upholstery Tool accommodates high volume jobs where production rate is important.

It is capable of solution flow rates for jobs that require a flushing action which makes the tool particularly efficient for stair cleaning.

An optional accessory handle is available to increase comfort on long cleaning jobs.

We trust that you will enjoy many years of reliable upholstery cleaning with the new DriMaster ClearView Upholstery Tool.

* U.S. Patent No. RE41,367; 7,070,662; RE39,623; D590,111

Contact Information

If you have any questions regarding the operation, maintenance or repair of this tool, please contact your local distributor.

To find a local distributor, please visit our website at

<https://hydramaster.com/dealer-locator>

If your question cannot be resolved by your local distributor or by the information within this manual, you may contact HydraMaster directly using the following phone numbers:

HOURS	TELEPHONE NUMBERS	E-MAIL ADDRESSES
Monday – Friday 7:00 am to 5:00 pm Pacific Time	Technical Support (800) 426-1301 FAX: (800) 426-4225	Technical Support techsupport@hydramaster.com
	Customer Service/Parts (800) 426-1301 FAX: (800) 426-4225	Customer Service/Parts parts@hydramaster.com

When calling the distributor, be sure to reference the serial number and date of purchase.

FOR YOUR REFERENCE:

Date of Purchase: _____

Purchased From (Distributor): _____

Warnings

WARNING

HydraMaster uses this WARNING symbol throughout the guide to warn of possible injury or death.

CAUTION

This CAUTION symbol is used to warn of possible equipment damage.

NOTICE

This NOTICE symbol indicates that federal or state regulatory laws may apply, and also emphasizes supplemental information.

2 – OPERATING INSTRUCTIONS

Your DriMaster ClearView Upholstery Tool has been engineered using the latest and most sophisticated technology available to produce the finest upholstery cleaning results possible. Despite this, it remains only a tool of the upholstery cleaning trade and can produce only as good a job as the person operating it.



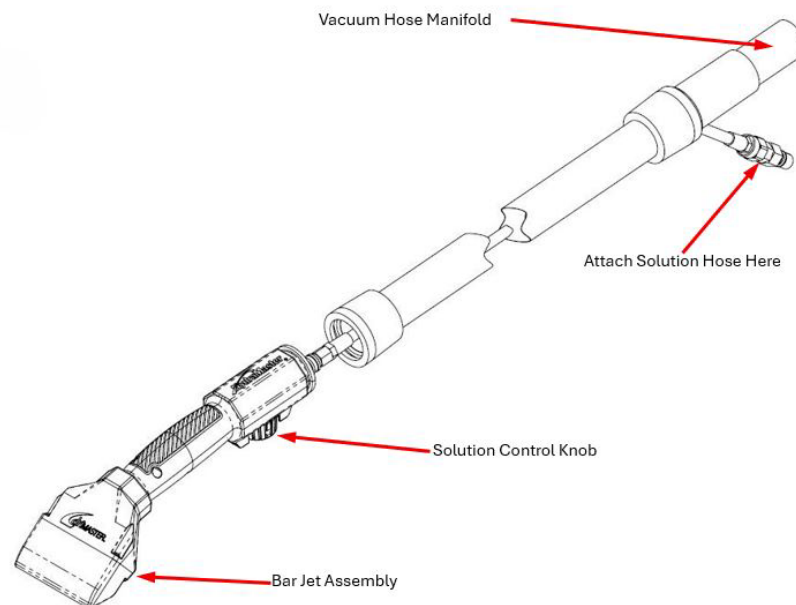
HydraMaster strongly recommends attending an Institute of Inspection, Cleaning and Restoration Certification (IICRC) approved Upholstery Cleaning course as soon as possible and to always follow the IICRC guidelines when cleaning.

Begin Cleaning

⚠ WARNING

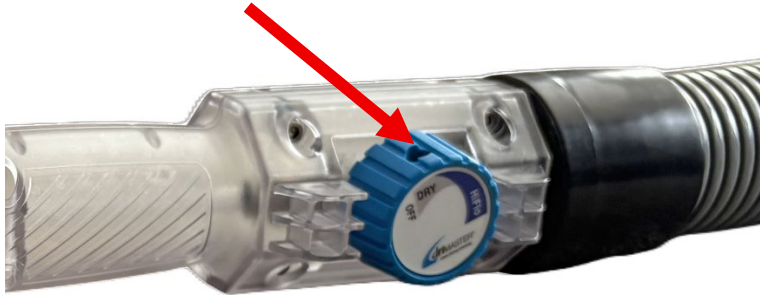
Do not use the DriMaster on a machine exceeding 14"Hg vacuum and 500 psi solution pressure. Personal injury could result.

1. Attach the solution hose to the solution quick connect. A 1-1/2" – 2" vacuum hose can be attached to the vacuum hose manifold.



2. Adjust the solution volume by turning the solution control knob. Turning the knob counterclockwise increases the solution volume; turning the knob clockwise decreases the solution volume. The amount of solution volume you need will vary with the type of machine you are cleaning with and the type of material you are cleaning.
3. To begin adjustment, make sure the cleaning machine is running and both vacuum and solution hoses are connected.

4. Slowly open the solution control knob until solution is flowing across the entire bar jet (without overspray).



NOTICE

When the solution knob is turned toward the “HiFlo” position, the solution will form a liquid ‘sheet’ across the bar jet. The amount of vacuum and pressure produced by your machine will determine the overspray on the bar jet assembly.

⚠ WARNING

Hot Surface. Do not touch the bar jet assembly during operation or immediately afterwards; doing so may cause severe burns

CAUTION

When cleaning stairs, do not allow the tool to come into contact with the tack strip along the edges of the stairs. The tool’s cleaning surface may be damaged by the tack strip. Equipment damage such as this is not covered by warranty.

3 – TOOL MAINTENANCE

Cleaning Bar Jet Assembly

The Bar Jet Assembly needs to be cleaned with a 0.015” feeler gauge.

1. Slide the feeler gauge into the small slot
2. Gently slide the gauge back and forth to clear any debris from the opening.



CAUTION

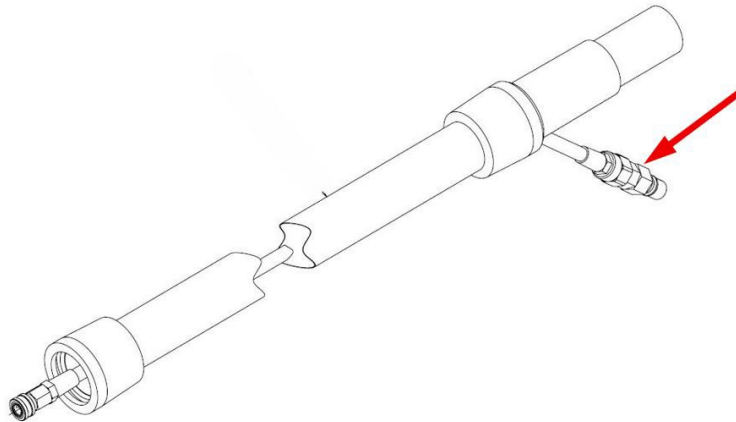
Use only a feeler gauge to clean the slot in the bar jet. Use of any other implement (paper clip, knife blade) may damage the opening and seriously reduce the cleaning effectiveness of the tool.

NOTICE

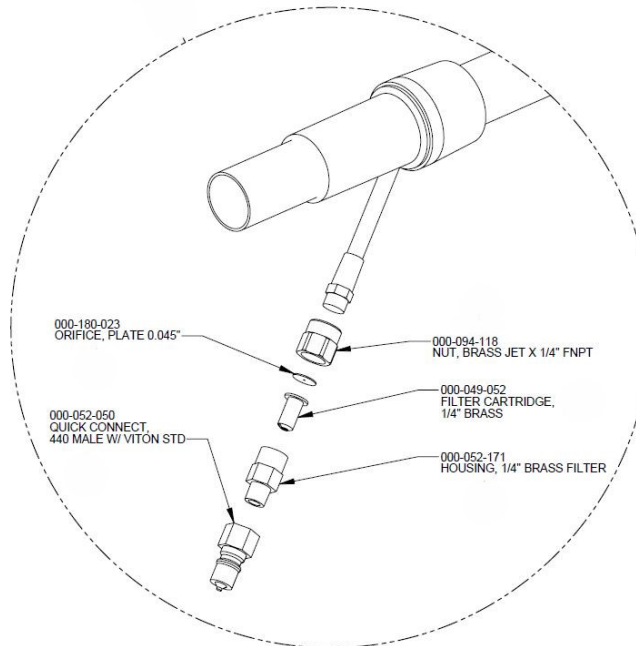
HydraMaster recommends you clean the filter cartridge and orifice plate on a periodic basis to eliminate hard water deposits. Both components are conveniently located in the Hide-a-Hose solution quick connect assembly.

Cleaning the Filter Cartridge and Orifice Plate

1. Disassemble the Hide-a-Hose quick connect to gain access to the filter cartridge and orifice plate.



2. Remove the filter cartridge and orifice plate, place them in a cup of white vinegar and soak for 30 minutes.



3. Clean the orifice plate's opening with a wooden skewer or a similar non-metallic tool.

CAUTION

Do not use a metal object to clean the opening of the orifice plate, doing so can damage the plate.

4. Remove both parts from the vinegar and thoroughly rinse them with clean water.
5. Assemble the solution quick connect, install the filter cartridge and orifice plate in the proper order.

CAUTION

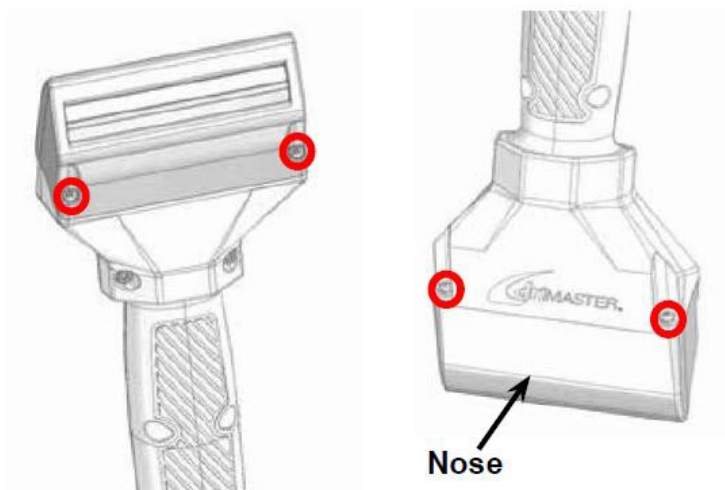
Do not operate the DriMaster without the orifice plate installed. If you do not properly install the orifice plate in the solution quick connect as indicated, equipment damage may occur. Such equipment damage is not covered by warranty.

NOTICE

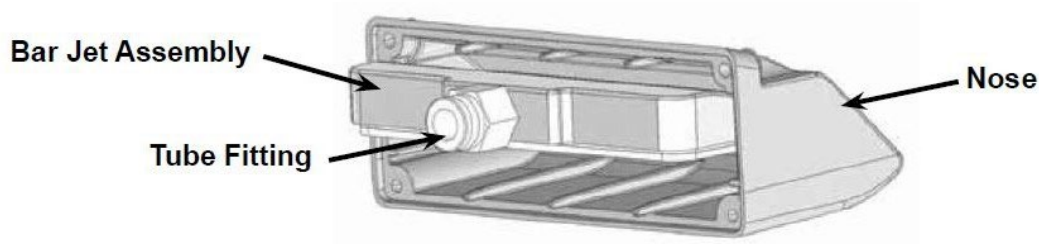
It may be necessary to periodically clean the inside of the tool, hose and manifold. Debris can build up over time, restricting the air flow.

Follow this procedure to disassemble the tool and clean the interior:

1. Remove the nose of the tool by first removing the four 4-40 screws using an Allen hear wrench.



2. Clear any debris build up from the interior of the tool.
3. Install the nose, ensure that the bar jet assembly enters the space between each mounting groove inside the end of the nose.



4. Carefully fit the nose to the end of the tool body while aligning the mounting flange over the top and bottom halves of the tool.
5. After the nose is seated, install the four 4-40 mounting screws using the thread locker indicated.

NOTICE

The material of the nose can wear down over time due to regular use. This is normal and is not covered under warranty.














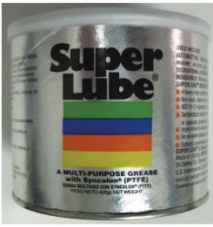

HydraMaster recommends that the operator/distributor stock replacement parts in their service vehicles.

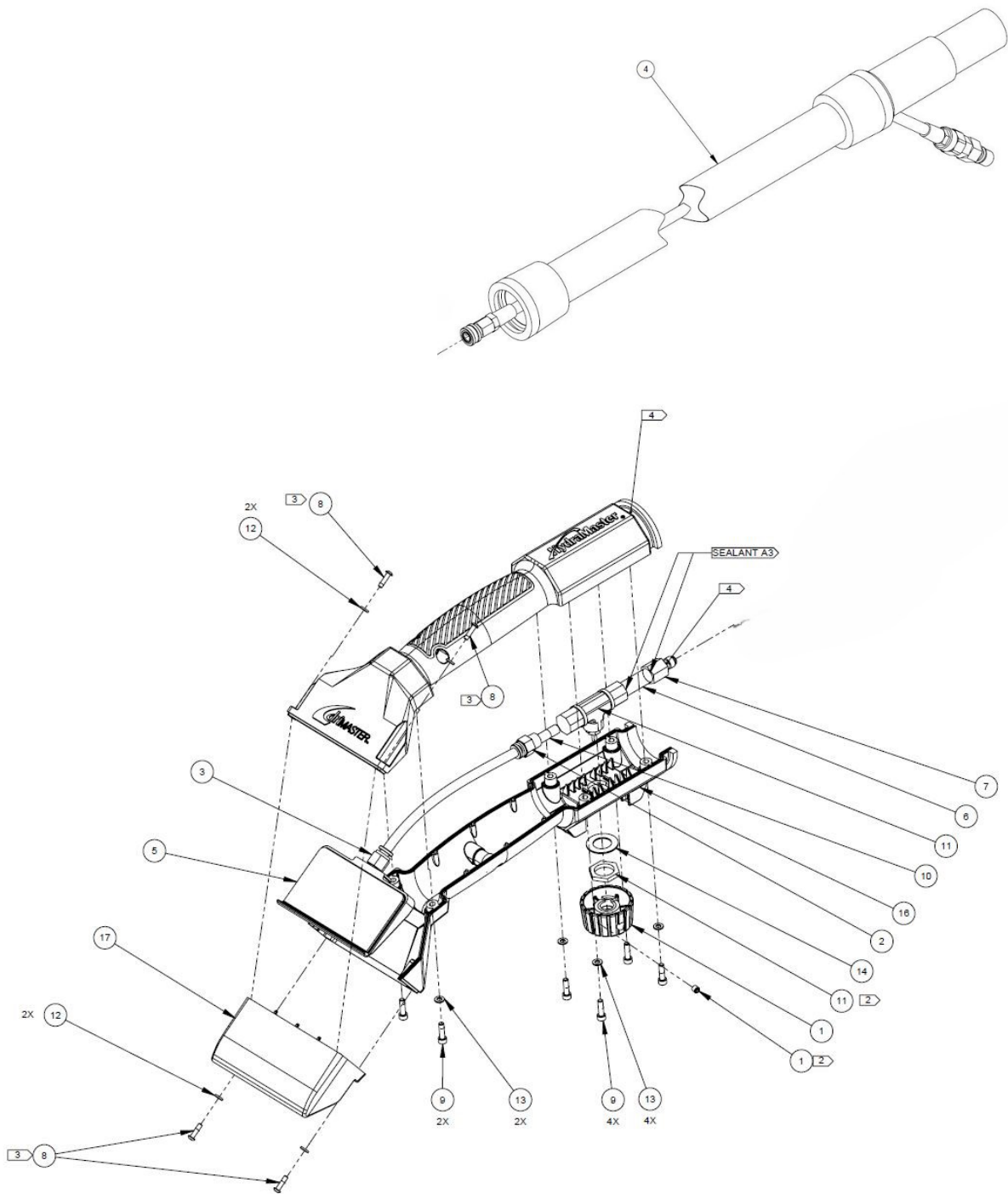
4 – ASSEMBLIES AND PARTS LISTS

This section of the manual shows the DriMaster ClearView assembly illustrations.

Some of the illustrations reference sealants, adhesives, lubricants, etc. that are used in the construction of HydraMaster equipment.

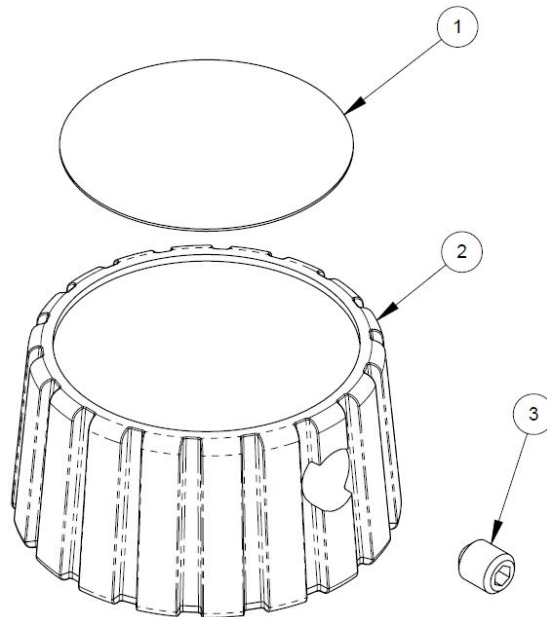
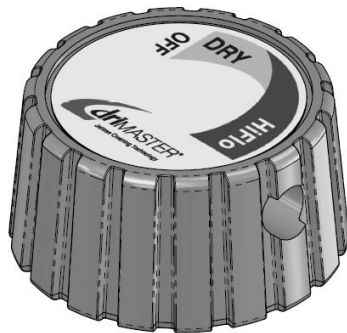
Refer to Figure 4-1 to identify those substances such as A1, A2 and so forth. Equivalent products are acceptable if they meet or exceed current specifications and are approved by HydraMaster.

Adhesive Material Production Line Reference Card from ENG-45975 Rev. 0					
A1 Silicone RTV 	A2 Loctite 567 	A3 Loctite 545 	A4 Teflon Tape 	E1 Loctite 51252 Grease 	
B1 Loctite 242 	B2 Loctite 262 	B3 Loctite 266 	C1 Gapper 	D1 Loctite 7649 	E2 Molykote Anti-Seize 
B4 Loctite 222MS 	B5 Loctite 425 	E4 Super Lube 	E5 SKF Anti-Fret 		



Item	Part Number	Description	Qty
1	000-061-221	Assembly, Knob DMCV with Label	1
2	000-052-560	Fitting, 1/8" NPT x 1/4" One Touch	1
3	000-052-561	Fitting, 10-32 NPS x 1/4" One Touch	1
4	000-068-667	Hose, Hide-A-Hose Assembly	1
5	000-076-071	Jet Assembly Welded	1
6	000-052-762	Nipple, 1/8" NPT x 1.5" Lg	1
7	000-052-765	Quick Disconnect, Male 1/8" NPT	1
8	000-143-351	Screw, 4-40 UNC x 7/16" Lg SS Button	4
9	000-143-350	Screw, 6-32 UNC x 1/2" Lg Allen Head	6
10	000-125-350	Tube, 1/4" ID x 7.25" Lg	1
11	000-169-251	Valve, Ball SS	1
12	000-174-182	Washer, #4 Flat	4
13	000-174-167	Washer, 0.143" ID x 0.267" OD x 0.032" thick	6
14	000-174-168	Washer, 0.515" ID x 0.875" OD x 0.035" thick	1
15	000-061-215	Handle, Body – Top	1
16	000-061-216	Handle, Body – Bottom	1
17	000-061-217	Handle, Body – Nose	1

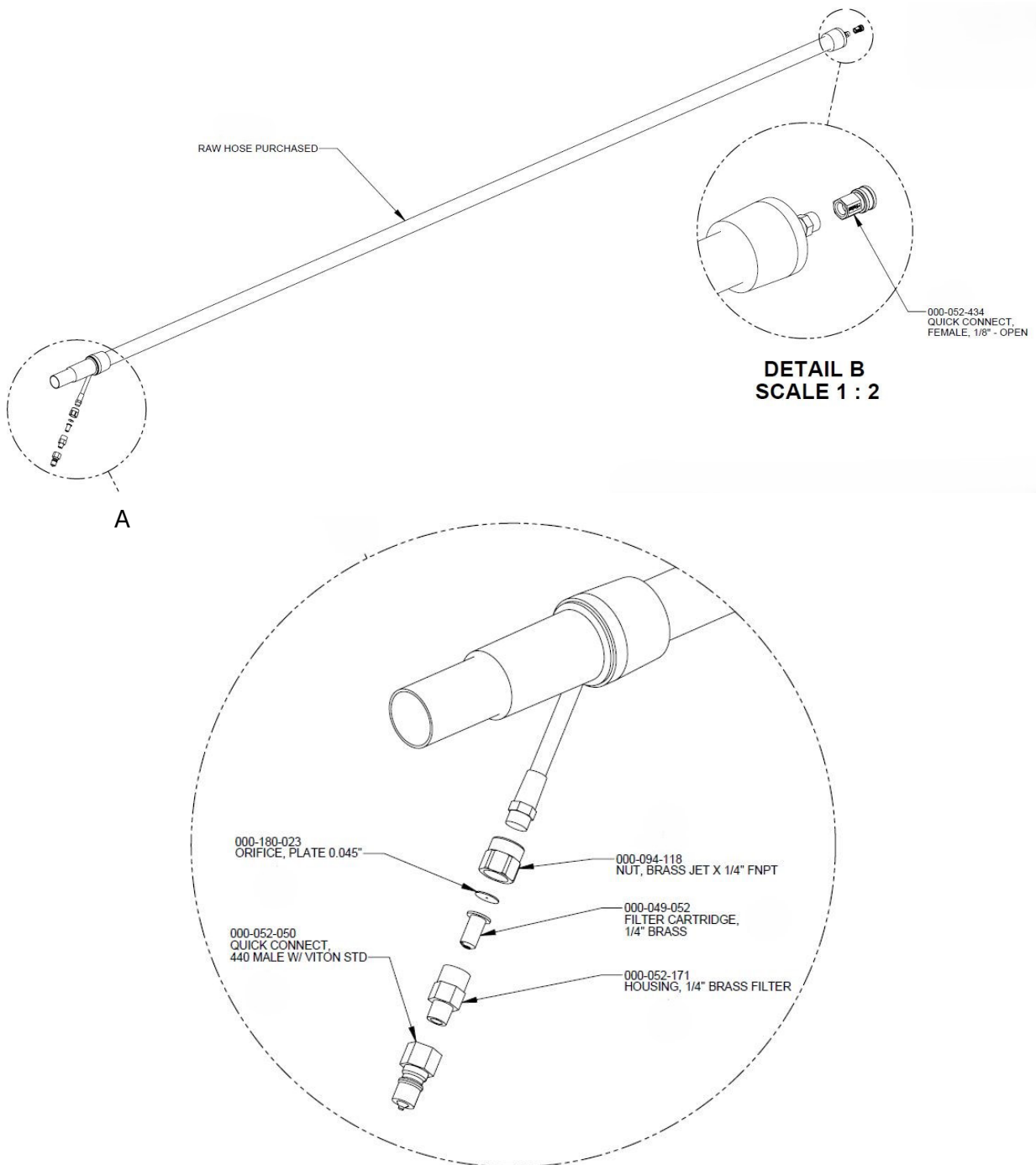
000-061-221 Knob Assembly

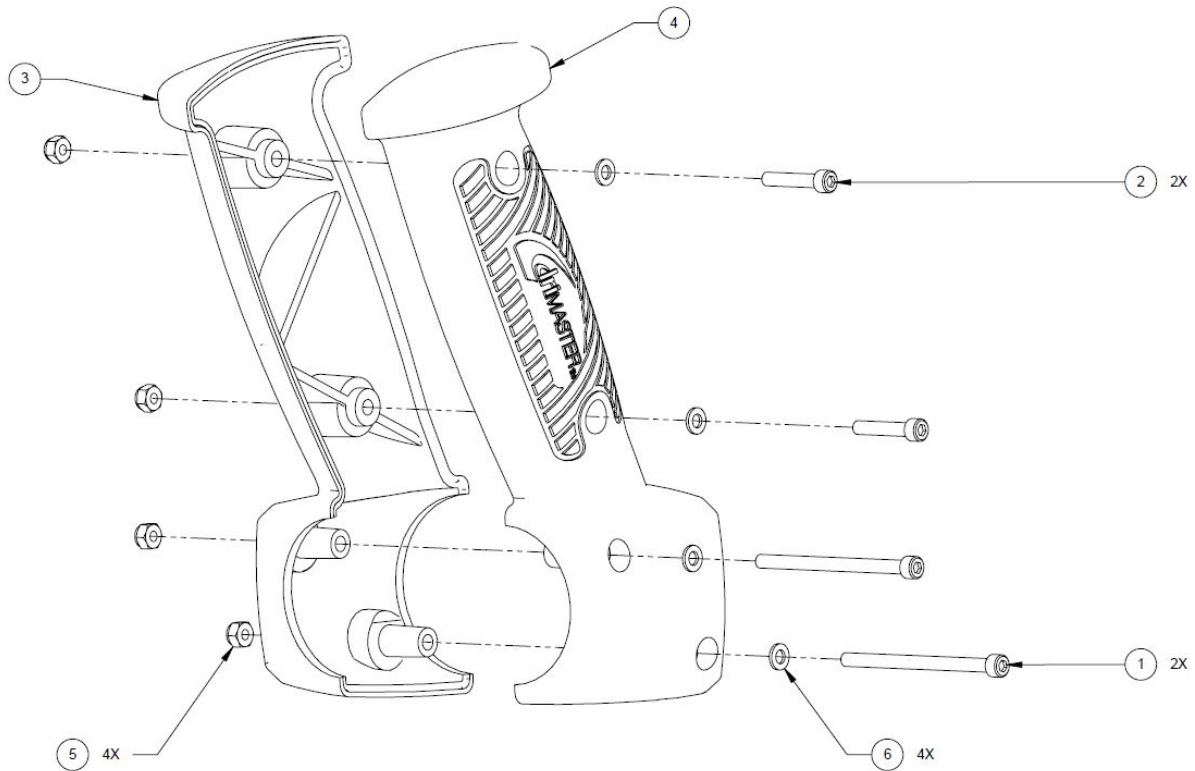


Item	Part Number	Description	Qty
1	000-081-251	Label, Knob – Flow Control	1
2	000-061-218	Knob Assembly, Flow Control Valve CV	1
3	000-143-374	Screw, 8/32 UNC x 0.188 Lg SS set	1

000-068-667

Hide-a-Hose Assembly





Item	Part Number	Description	Qty
1	000-143-579	Screw, 6-32 x 2 Cap	2
2	000-143-577	Screw, 6-32 x 3/4 Cap	2
3	000-061-141	Handle, Accessory, Left	1
4	000-061-142	Handle, Accessory, Right	1
5	000-094-063	Nut, 6-32 Nylok	4
6	000-174-167	Washer, 0.143"Id x 0.267"Od x 0.032	4

5 – HOW TO ORDER PARTS

From time to time, cleaning equipment may wear out or malfunction. To obtain a proper diagnosis of the malfunction, and to order replacement parts or arrange for repairs, it is important that you proceed in the following manner.

Warranty Parts Orders

1. Call your local distributor and ask for the service department.
2. Have the following information available:
 - a. Model
 - b. Date of Purchase
 - c. Description of malfunction
3. Once it has been determined which parts are needed to correct the problem, make arrangements with your distributor to either perform the repairs or ship the parts to you.

Parts Orders

Call your local distributor In most instances they either stock or have access to parts through a regional service center.

Emergencies

If for any reason your distributor is unable to supply you with the necessary parts they may call HydraMaster and arrange for expedited shipping.

HydraMaster sells parts only through authorized distribution and service centers.

We shall always endeavor to be fair in our evaluation of your warranty claim and shall provide you with a complete analysis of our findings.

6 – WARRANTY INFORMATION

Warranty Procedure

Warranty coverage is available through your local distributor

If you have moved to a new area or have purchased a used machine and need information regarding your local distributor, call HydraMaster at (800) 426-1301 or email us at:

techsupport@hydramaster.com

When calling the distributor, be sure to reference the model and date of purchase.

FOR YOUR REFERENCE:

Model	
Date of Purchase	
Purchased From (Distributor)	
Address	
Phone Number	
Sales Representative	

All parts of the DriMaster ClearView Upholstery Tool are warranted against defects as stated in the current warranty documents, which can be accessed on HydraMaster's website: <https://hydramaster.com/warranty>