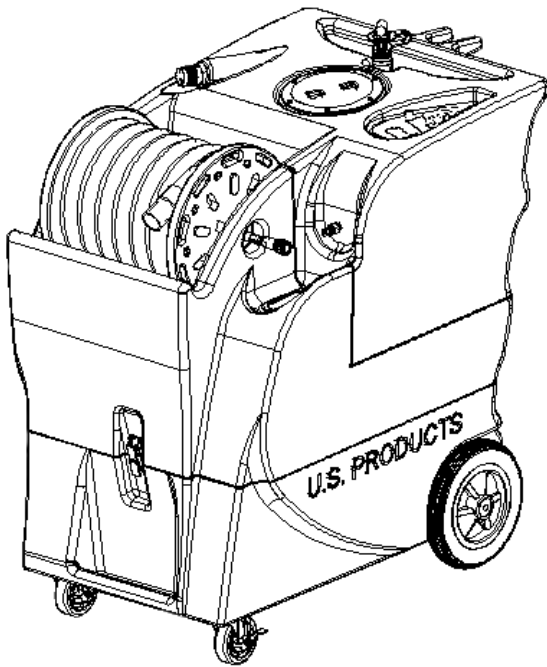




KING COBRA[®] 500 100V



INFORMATION & OPERATING INSTRUCTIONS

**DO NOT OPERATE THE MACHINE UNTIL YOU HAVE READ
ALL SECTIONS OF THE INSTRUCTIONS**

IMPROPER USE OF THE MACHINE WILL VOID THE WARRANTY

1. Always use a defoamer when foaming occurs to prevent vacuum motor damage.
2. Keep machine from rain and snow, extremes in temperatures, and store in a heated location. Use the machine indoors. Do not use outdoors.
3. Do not let the pump run dry.
4. Use approved chemicals only. NO SOLVENTS.
5. Wear gloves or use rags when removing quick disconnects to prevent burns.

IMPORTANT SAFETY INSTRUCTIONS

This machine is only suitable for commercial use, for example in hotels, schools, hospitals, factories, shops and offices other than normal residential housekeeping purposes.

When using any electrical appliance, basic precautions should always be followed, including the following:

NOTE: Read all instructions before using this machine.

WARNING!

To reduce the risk of fire, electric shock, or injury:

- Do not leave the machine unattended when it is plugged in. Unplug the unit from the outlet when not in use and before servicing.
- To avoid electric shock, do not expose to rain or snow. Store, and use, indoors.
- Do not allow to be used as a toy. Close attention is necessary when used near children.
- Use only as described in this manual. Use only the manufacturer's recommended attachments.
- Never add water over 54° C/130° F to the solution tank.
- Do not use with damaged cord or plug. If the machine is not working as it should, has been dropped, damaged, left outdoors or dropped into water, return it to a service center.
- Do not pull by the cord, use the cord as a handle, close a door on the cord, or pull the cord around sharp edges or corners. Do not run the machine over the cord. Keep the cord away from heated surfaces. To unplug, grasp the plug, not the cord.
- Do not handle the plug, the cord or the machine with wet hands.
- Extension cords must be 12/3 and no longer than 50 feet. Replace the cord or unplug immediately if the ground prong becomes damaged.
- Do not put any object into openings. Do not use with any opening blocked; keep free of dust, lint, hair, and anything that may reduce air flow.
- Keep loose clothing, hair, fingers, and all parts of body away from openings and moving parts.
- Do not pick up anything that is burning or smoking, such as cigarettes, matches, or hot ashes, or any health endangering dusts. Do not use to pick up flammable or combustible liquids such as gasoline or use in areas where they may be present.
- Turn off all controls before unplugging.
- Use extra care when cleaning on stairs.
- Connect to a properly grounded outlet only.
- Liquid ejected at the spray nozzle could be dangerous as a result of its temperature, pressure, or chemical content.

INSPECTION:

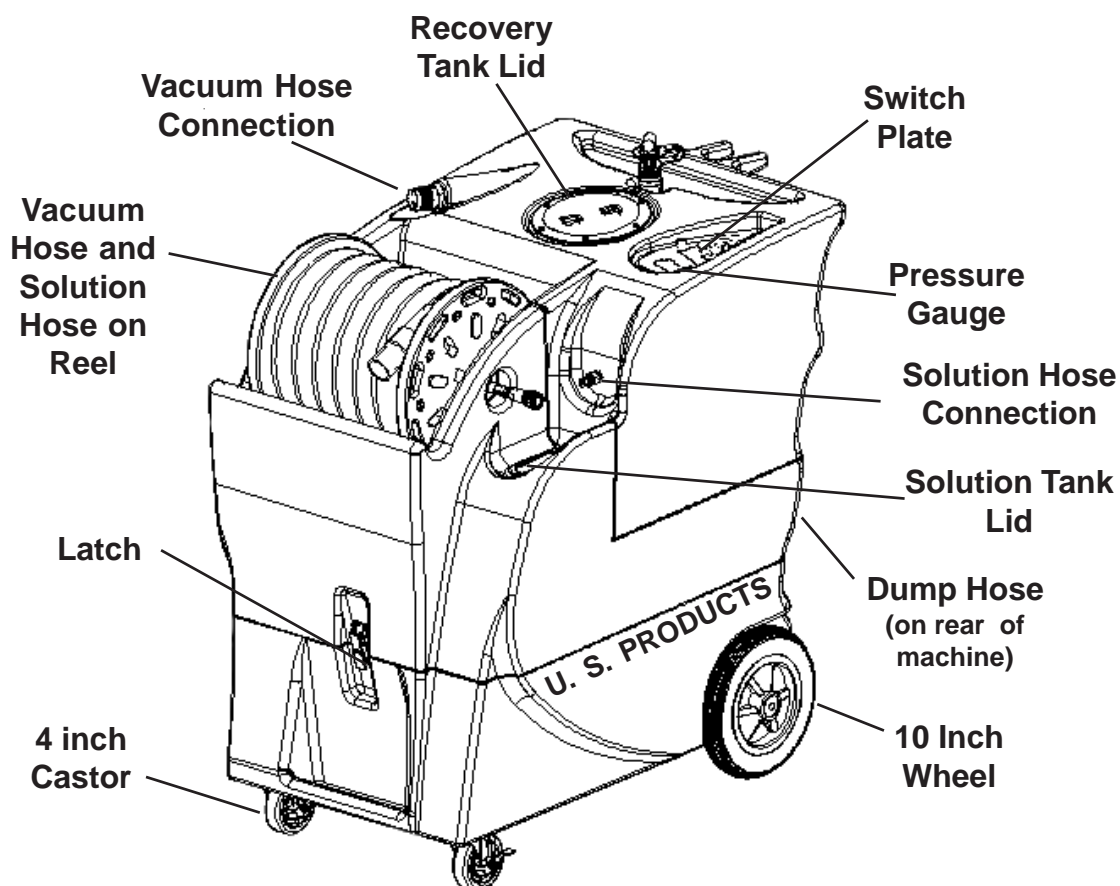
Carefully unpack and inspect your KING COBRA-500 for shipping damage. Each machine is tested and inspected before shipping. Any shipping damage incurred is the responsibility of the carrier. You should notify the carrier immediately if you notice damage to the box or to the machine or parts.

CLEANING SOLUTIONS:

We recommend liquid cleaning chemicals. Powder chemicals may be used, but unless mixed very thoroughly they could cause a build-up in the pump, lines, heat exchanger and/or quick disconnects. Any problem caused by a chemical build-up is not covered by warranty. Use a neutral cleaner with a pH between 6 and 9 to avoid premature wear of the pump, seals, and/or other components. Damage caused by the use of strong chemicals is not covered by the warranty.

MAINTENANCE:

For optimum performance flush the machine with clear water at the end of each working day. Once a month, minimum, run a flushing compound through the machine to break up any mineral or chemical build-up that may have formed. U.S. Products "X-1500" is recommended. The vacuum motor, pump motor, and the pump do not require any scheduled maintenance; however, the motors may require replacement brushes after 1000 - 1500 hours. The pump may require rebuild kits after 1000 - 1500 hours, typically, and the pump unloader valve may need to be replaced after approximately 1000 - 1500 hours of use. (refer to machine part list for numbers). Clean the body with an all purpose detergent, and protect it with an automobile interior polish. Lubricate the wheels, castors, and quick disconnects with an all purpose silicone spray.



NOTE: This machine is only suitable for commercial use, for example in hotels, schools, hospitals, factories, shops and offices other than normal residential housekeeping purposes.

Record the serial number and model of your new extractor here:

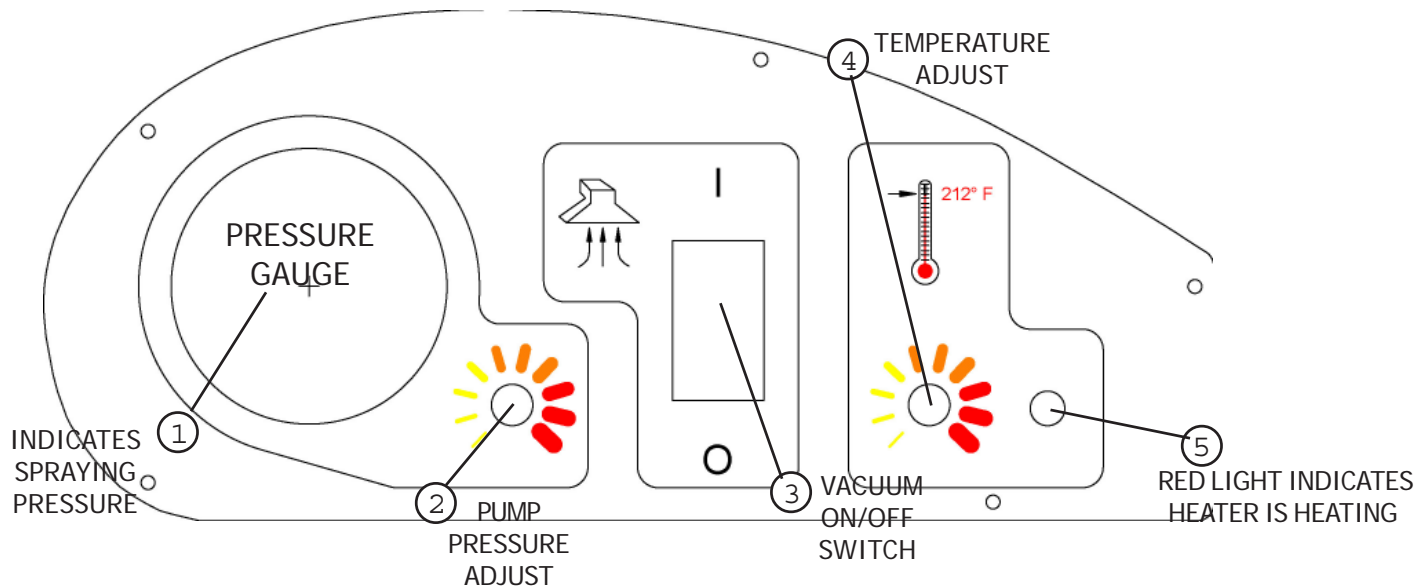
(and be sure to register your warranty: go to www.usproducts.com)

Serial Number: _____ **Model:** KING COBRA-500-JP

Purchase Date: _____

Write the name and phone number of your distributor: _____

SWITCH PLATE



OPERATION

- 1 Inspect the machine, hoses, and cleaning tools for cleanliness and completeness.
- 2 Fill the solution tank with water. Using warm water may be a benefit in cleaning effectiveness, but do not use hot water (above 130° F / 54°C) in the tank.
- 3 Screw the lid on the recovery tank. Close the dump hose.

REFER TO THE DIAGRAMS ON THE PREVIOUS PAGE

continued from the previous page

- 4 Connect the priming/siphon hose to the machine, turn the pump ON by turning the pump pressure knob (2) up to increase pump speed, and turn the vacuum switch (3) on. Hold the rubber 'cork' against the vacuum inlet hose barb on the recovery tank. The pump should prime between 20 - 60 seconds. Watch the water flow into the recovery tank through the clear lid. When the water is clear (no air in it) and flowing strongly, turn both the pump and the vacuum off, and remove the priming hose. Priming may take 20 - 60 seconds, and the solution tank should be full.
- 5 Add liquid cleaning chemical, with a pH between 6 and 9, to the solution tank.
- 6 Attach the spray hose (from the reel) to the solution quick disconnect and the vacuum hose to the hose barb on the recovery tank. Pull the hoses out from the reel. Attach the other ends of the hoses to the cleaning tool.
- 7 Set the temperature knob (4) to the desired heat setting. Allow the heat exchanger two minutes to reach operating temperature. The red light (5) will turn on only when the heat exchanger is actively heating and the red light (5) will go out when the heater has reached operating temperature.
NOTE: the red light will be on nearly all the time as you clean.
- 8 Turn the pump on by setting the pressure adjust knob to the desired spraying pressure (0 - 500 PSI). Read the spraying pressure at the pressure gauge (1) while spraying. **NOTE:** when you let off the trigger on the wand, the pressure gauge reading will drop to 0 psi; however, the spraying pressure will remain at the level to which you have set it. Turn the vacuum on (3). **NOTE:** the vacuum motor will start up slowly to prevent a large current surge.
- 9 Begin cleaning.
- 10 Use defoamer in the recovery tank any time foaming occurs.
- 11 Monitor the water level in the solution tank. Do not let the pump run dry.
- 12 When the solution tank gets low, turn off the pump and the vacuum, fill the solution tank, empty and clean the recovery tank.
- 13 When finished with the job, remove any unused solution from the solution tank, and run a few gallons of clean water through the system. Drain the recovery tank by placing the dump hose over a drain, or a bucket, and removing the cap. Disconnect the hoses from the cleaning tool, and reel them up onto the hose spool.

ELECTRONIC FLOAT SHUT-OFF

When the recovery tank is full, the electronic float switch will turn the vacuum motor off. This will prevent water from entering the vacuum motor. The float may not work properly if the float filter rod is dirty or if there is heavy foam in the tank. To reset, turn the Vacuum switch off, and empty the tank.

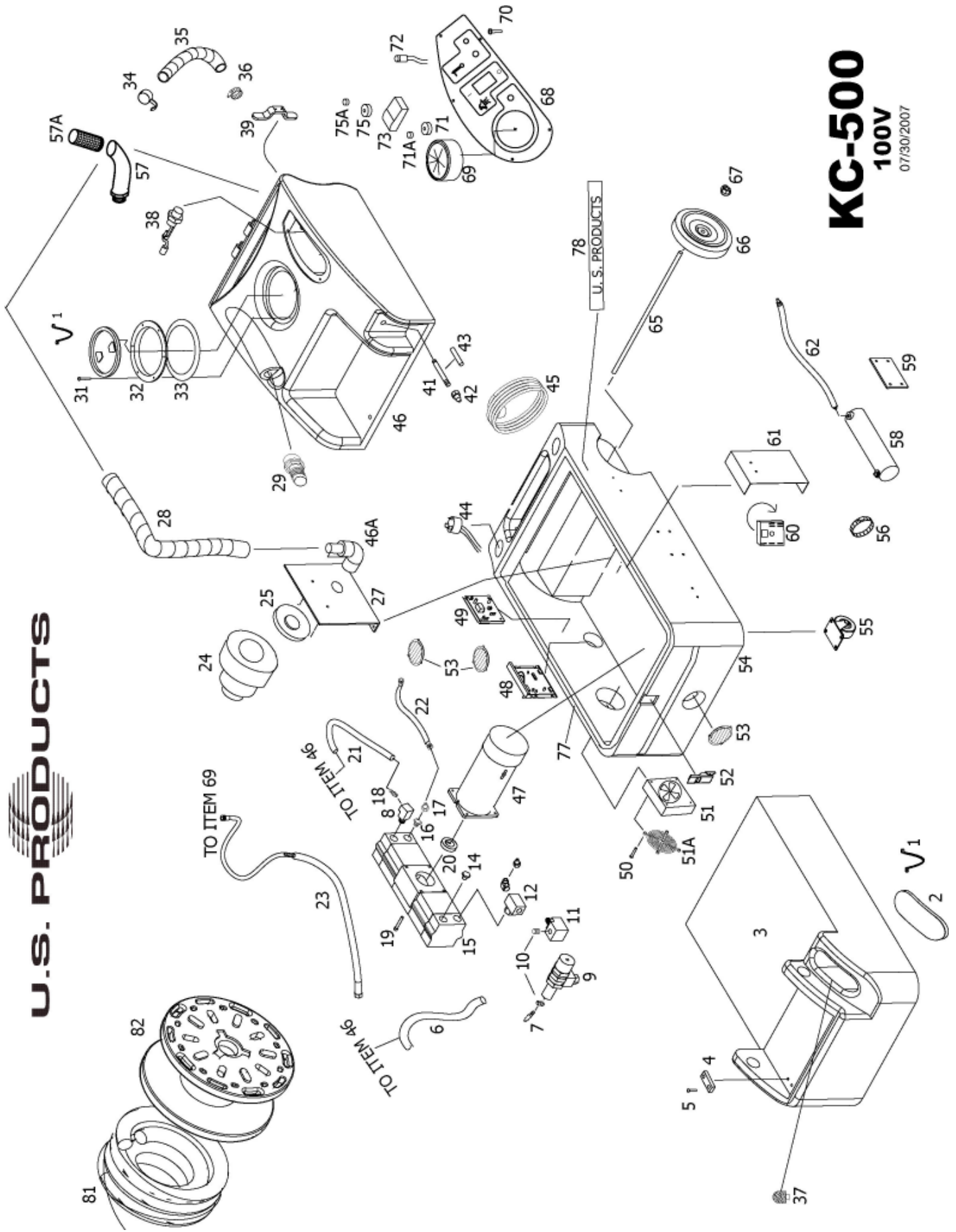
⚠ CAUTION: to avoid vacuum motor damage, always vacuum the carpet before cleaning, but never use the extractor to dry vacuum.

⚠ CAUTION: to avoid vacuum motor damage, always make sure the float filter is clean and that it can travel freely before you operate the machine. Always use a defoamer any time foam is present.

⚠ CAUTION: keep the vacuum inlet filter clean. The filter is located towards the rear of the recovery tank, near the switch plate. Remove it and clean it daily.

NOTE: To remove the reel, with hoses, from the machine, pull the vacuum hose loose from the hose barb on the front of the tank. Disconnect the solution hose quick coupling. Push Vacuum hose into the center of the hose spool. Grasp the spool from either side, and lift it off the machine. **NOTE:** before servicing any component in the base cabinet, the hoses and spool must be removed from the machine before the tanks can be lifted open.

U.S. PRODUCTS



KC-500
100V
07/30/2007

KING COBRA-500-JP

100V

PART LIST

<u>ITEM</u>	<u>PART No</u>	<u>DESCRIPTION</u>	<u>ITEM</u>	<u>PART No.</u>	<u>DESCRIPTION</u>
1	805	Chain, lid, 8"	52	908A	Latch, draw, rubber
2	901B	Lid, solution tank	53	928	Louver, 3", includes 3 screws
3		Holding Tank, white	54	BKCR-BLK	Base, black
4	1088	Glide, teflon	55	905	Castor, 4"
5	178	Screw, 6-32 X 1/2"	56	176A	Hose clamp
6	925	Hose, 3/8" I.D. X 24"	57	929	Filter, vacuum inlet
7	164	Hose barb, brass, 3/8" hose	57A	1139	Elbow, 45°
8	91	Elbow, 90 degree	58	FP348	Heat exchanger
9	945D	Valve, pump unloader	59	455	Bracket, mounting, heater
10	92A	Nipple, S/S	60	---	See miscellaneous Parts and Kits
11	216	Elbow, brass	61	918	Plate, heat sink
12	168	"T", brass, 1/4 p.t.	62	FP348A	Hose, heater to outlet
14	211	Plug, brass, 1/4 p.t.	65	910	Axle, 21"
15	950C	Pump, no motor	66	2084	Wheel, 10"
16	97	Reducer, brass	67	27A	Axle cap
17	223	Quick connect, male, 1/8 p.t.	68	943001	Switch plate
18	165	Hose barb, brass, 1/2" hose	69	951B	Pressure gauge
19	1147	Cap screw, pump to motor	70	28	Screw, #4 X 3/8"
20	950D	Cam/bearing assembly	71	FP399	Potentiometer, with cable, pump
21	946	Hose, 1/2" I.D. X 18"	71A	248	Knob, blue top, for pump speed
22	FP348B	Hose, pump to heater, 12"	72	78B	Light, red,
23	FP411	Hose assembly, pump to gauge	73	FP345	Switch & actuator, vacuum
24	913B	Vacuum motor, 3-stage	75A	248	Knob, red top, for heat adjustment
25	959	Gasket, vacuum motor	75	FP347	Potentiometer, with wires, heat
27	926	Manifold, vacuum motor mount	77	FP351	Gasket, (#1043A X 84")
28	1136	Hose, vacuum inlet, 1-1/2" X 24"	78	1128	Label, KC-500
29	907	Hose barb, for vacuum hose	81	FP350C	Vac and pressure line complete, 25 ft
31	1148	Screw, 8-32 X 1"	82	FP350A	Reel complete, without hoses
32	2086	Lid, vacuum, with ring			
33	1074	Gasket, lid			
34	1060C	Plug, drain hose			
35	1060B	Hose, drain, 1-1/2" X 24"			
36	156	Hose clamp			
37	207A	Filter, pump inlet			
38	2026	Float switch			
39	CWKC-BLK	Cord wrap, Black	FP194E		Heat repair kit includes probe, thermistor control, thermal cutout & instructions (for machines built after June, 2005)
41	1146	Pipe, 6.85", S/S	FP409		Pump & motor complete, w/unloader 500 psi
42	45	Quick connect, male, 1/4 p.t.	FP410		Pump complete w/unloader, no motor
43	1144	Rubber sleeve, 1/2" ID X 5"	950CP		Pump rebuild kit, valves and O-rings, 500 psi
44	1062	Receptacle, power cord	250		Pump rebuild kit, piston and seals, 500 PSI
45	1057B	Power cord, 25 ft, 3/12, yellow	SYP1		Syphon hose
46		Vacuum tank, white	FP350B		Pressure line, complete with swivel end. 25 ft.
46A	1131	Elbow, PVC	FP350		Vacuum hose & pressure line with reel, complete
47	948B	Motor, pump, DC out,	FP469		Swivel hose assembly, 16-1/2", without reel
48	FP361	PCB, pump motor speed,			
49	FP225	PCB, vacuum control			
50	2B1	Screw, 6-32 X 2-1/4"			
51	2014	Fan, cooling			
51A	2015	Guard, fan			

MISCELLANEOUS PARTS AND KITS

(NOTE: Items in kits not sold separately.)

KING COBRA® 500 100V

SPECIFICATIONS:

Rotomolded Body: Lifetime Warranty

Vacuum: 7.2" 3-stage

VAC Shutoff: Electronic

Pump: Positive displacement, fully adjustable 0-500 psi

Waterlift: 140"

Heat: Fully adjustable 145° to 212° F

Heater: 1500 Watts

Wand: Double bend, two spray tip, for 500 psi

Weight: 122 lbs.