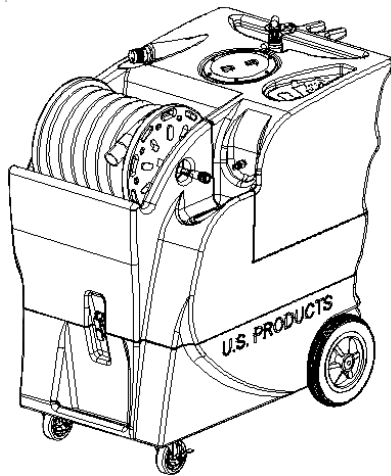




# KING COBRA<sup>®</sup> 300 120V



## INFORMATION & OPERATING INSTRUCTIONS

**DO NOT OPERATE MACHINE UNTIL YOU HAVE READ  
ALL SECTIONS OF THE INSTRUCTIONS**

**IMPROPER USE OF THE MACHINE WILL VOID THE WARRANTY**

1. Always use a defoamer when foaming occurs to prevent vacuum motor damage.
2. Keep machine from rain and snow, extremes in temperatures, and store in a heated location. Use the machine indoors. Do not use outdoors.
3. Do not let the pump run dry.
4. Use approved chemicals only. NO SOLVENTS.
5. Wear gloves or use rags when removing quick disconnects to prevent burns.
6. Keep machine from rain and snow, from extremes in temperatures, and store it in a heated location. Use the machine indoors. Do not use outdoors.

# IMPORTANT SAFETY INSTRUCTIONS

This machine is only suitable for commercial use, for example in hotels, schools, hospitals, factories, shops and offices other than normal residential housekeeping purposes.

When using any electrical appliance, basic precautions should always be followed, including the following:

**NOTE:** Read all instructions before using this machine.

## **WARNING!**

To reduce the risk of fire, electric shock, or injury:

- Do not leave the machine unattended when it is plugged in. Unplug the unit from the outlet when not in use and before servicing.
- To avoid electric shock, do not expose to rain or snow. Store, and use, indoors.
- Do not allow to be used as a toy. Close attention is necessary when used near children.
- Use only as described in this manual. Use only the manufacturer's recommended attachments.
- Never add water over 130° F/54° C to the solution tank.
- Do not use with damaged cord or plug. If the machine is not working as it should, has been dropped, damaged, left outdoors or dropped into water, return it to a service center.
- Do not pull by the cord, use the cord as a handle, close a door on the cord, or pull the cord around sharp edges or corners. Do not run the machine over the cord. Keep the cord away from heated surfaces. To unplug, grasp the plug, not the cord.
- Do not handle the plug, the cord or the machine with wet hands.
- Extension cords must be 12/3 and no longer than 50 feet. Replace the cord or unplug immediately if the ground prong becomes damaged.
- Do not put any object into openings. Do not use with any opening blocked; keep free of dust, lint, hair, and anything that may reduce air flow.
- Keep loose clothing, hair, fingers, and all parts of body away from openings and moving parts.
- Do not pick up anything that is burning or smoking, such as cigarettes, matches, or hot ashes, or any health endangering dusts. Do not use to pick up flammable or combustible liquids such as gasoline or use in areas where they may be present.
- Turn off all controls before unplugging.
- Use extra care when cleaning on stairs.
- Connect to a properly grounded outlet only.
- Liquid ejected at the spray nozzle could be dangerous as a result of its temperature, pressure, or chemical content.

## INSPECTION:

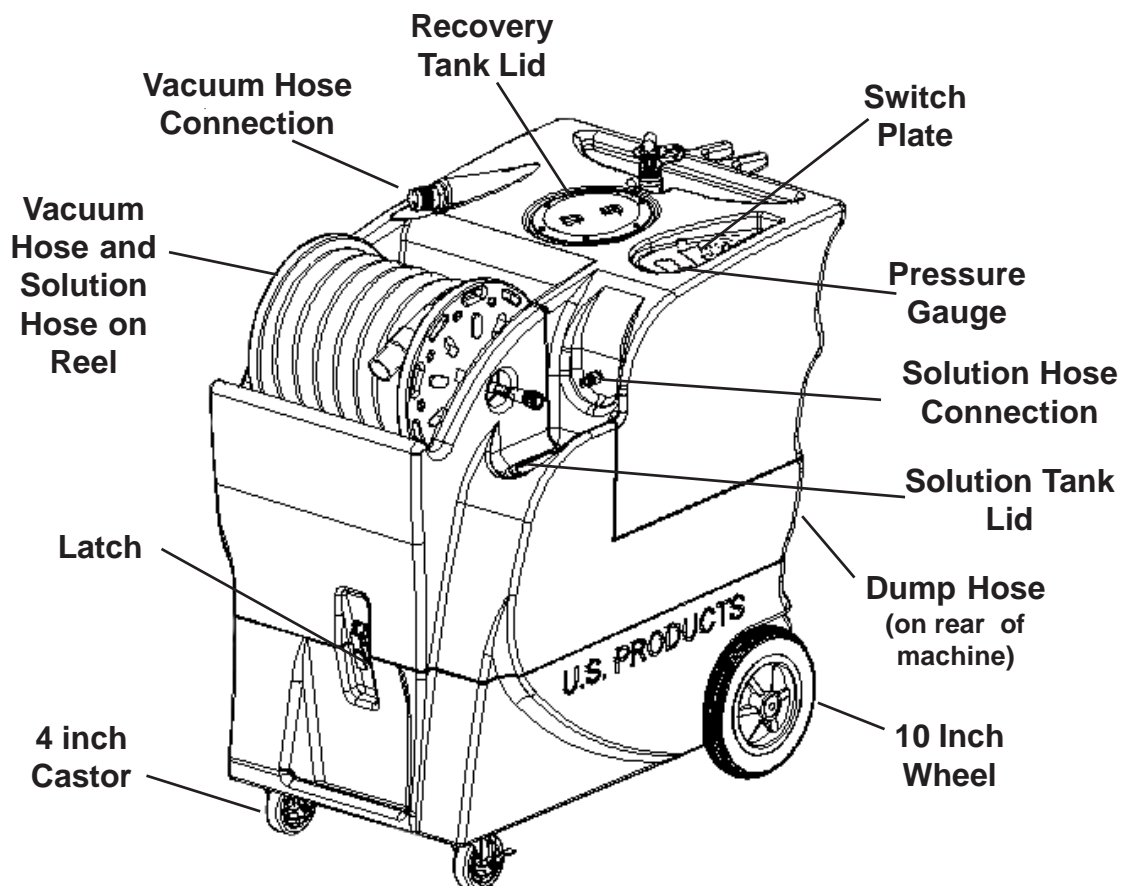
Carefully unpack and inspect your KING COBRA-300 for shipping damage. Each machine is tested and inspected before shipping. Any shipping damage incurred is the responsibility of the carrier. You should notify the carrier immediately if you notice damage to the box or to the machine or parts.

## CLEANING SOLUTIONS:

We recommend liquid cleaning chemicals, such as our Magic Fabric Cleaner. Powder chemicals may be used, but unless mixed very thoroughly they could cause a build-up in the pump, lines, heat exchanger and/or quick disconnects. Any problem caused by a chemical build-up is not covered by warranty. Use a neutral cleaner with a pH between 6 and 9 to avoid premature wear of the pump, seals, and/or other components. Damage caused by the use of strong chemicals is not covered by the warranty.

## MAINTENANCE:

For optimum performance flush the machine with clear water at the end of each working day. Once a month, minimum, run a flushing compound through the machine to break up any mineral or chemical build-up that may have formed. U.S. Products "X-1500" is recommended. The vacuum motor, pump motor, and the pump do not require any scheduled maintenance; however, the motors may require replacement brushes after 1000 - 1500 hours, and the pump and bypass valve may require rebuild kits after 1000 - 1500 hours, typically (refer to machine part list for numbers). Clean the body with an all purpose detergent, and protect it with an automobile interior polish. Lubricate the wheels, castors, and quick disconnects with an all purpose silicone spray.



**NOTE:** This machine is only suitable for commercial use, for example in hotels, schools, hospitals, factories, shops and offices other than normal residential housekeeping purposes.

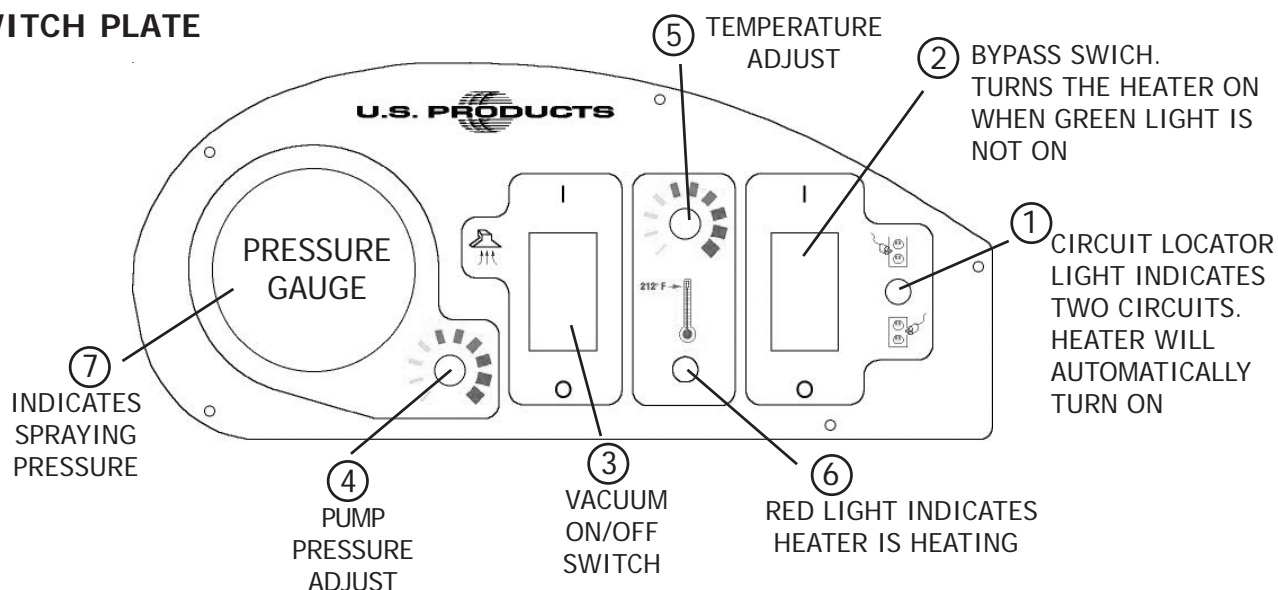
**Record the serial number and model of your new extractor here: (and be sure to mail your warranty card)**

**Serial Number:** \_\_\_\_\_ **Model:**   KING COBRA-300   **Purchase Date:** \_\_\_\_\_

**Write the name and phone number of your distributor:**

-----

### SWITCH PLATE



### OPERATION

- 1 Inspect the machine, hoses, and cleaning tools for cleanliness and completeness.
- 2 Fill the solution tank with water. Using warm water may be a benefit in cleaning effectiveness, but do not use hot water (above 130° F / 54°C) in the tank.
- 3 Screw the lid on the recovery tank. Close the dump hose.
- 4 Plug in the power cords. Do not connect both cords to the same outlet; the green, circuit locator light (1) on the switch plate should light up. If the locator light does not come on, try different outlets until it does. If you are certain the cords are on separate circuits, turn the Bypass switch (2) on.  
**CAUTION:** using the Bypass switch (2) when the cords are on the same circuit may cause the breaker in the wall to trip. **NOTE:** the receptacle on the left (viewed from behind the machine) powers the heater. The red light (6) will turn on only when the heat exchanger is actively heating.

REFER TO THE DIAGRAMS ON THE PREVIOUS PAGE

- 6 Connect the priming hose to the machine, turn the pump ON by turning the pump pressure knob (4) up to increase pump speed, and prime the air out of the pump. When the water is clear (no air in it) turn the pump off, and remove the priming hose. **NOTE:** if priming is difficult, place the open end of the priming hose into the Vacuum inlet hose barb, and turn the vacuum on. Use your hand to block the open area in the hose barb. This will allow the pump and the vacuum to work together to get the water moving. Priming may take 20 - 60 seconds, and the solution tank should be full. Turn motors off. Remove priming hose.
- 7 Add liquid cleaning chemical, with a pH between 6 and 9, to the solution tank.
- 8 Attach the spray hose to the solution quick disconnect and the vacuum hose to the hose barb on the recovery tank. Pull the hoses out from the reel. Attach the other ends of the hoses to the cleaning tool.
- 9 Set the temperature knob (5) to the desired heat setting. Allow the heat exchanger two minutes to reach operating temperature. The red light (6) will go out when the heater has reached operating temperature. **NOTE:** the red light will be on nearly all the time as you clean.
- 10 Turn the pump on by setting the pressure adjust knob to the desired spraying pressure (0 - 300 PSI). Read the spraying pressure at the pressure gauge (7) while spraying. Turn the vacuum on (3). **NOTE:** the vacuum motor will start up slowly to prevent a large current surge.
- 11 Begin cleaning.
- 12 Use defoamer in the recovery tank any time foaming occurs.
- 13 Monitor the water level in the solution tank. Do not let the pump run dry.
- 14 When the solution tank gets low, turn off the pump and the vacuum, fill the solution tank, empty and clean the recovery tank.
- 15 When finished with the job, remove any unused solution from the solution tank, and run a few gallons of clean water through the system. Drain the recovery tank by placing the dump hose over a drain, or a bucket, and removing the cap. Disconnect the hoses from the cleaning tool, and reel them up onto the hose spool.

**NOTE:** To remove the reel, with hoses, from the machine, pull the vacuum hose loose from the hose barb on the front of the tank. Disconnect the solution hose quick coupling. Push Vacuum hose into the center of the hose spool. Grasp the spool from either side, and lift it off the machine. **NOTE:** before servicing any component in the base cabinet, the hoses and spool must be removed from the machine before the tanks can be lifted open.

### **ELECTRIC CIRCUIT LOCATOR**

This unique, patented system is operated by a solid state circuit. It will inform the operator when the two cords are plugged into separate circuits by turning on the green, circuit locator light. This helps to prevent tripping circuit breakers.

**NOTE:** if the green, circuit locator light does not illuminate when the cords are plugged in, then both cords are on the same circuit. Try other outlets with one of the cords until you get the locator light to come on.

**NOTE:** if the bypass switch is turned on when both cords are on the same circuit, the breaker in the wall may trip.

### **ELECTRONIC FLOAT SHUT-OFF**

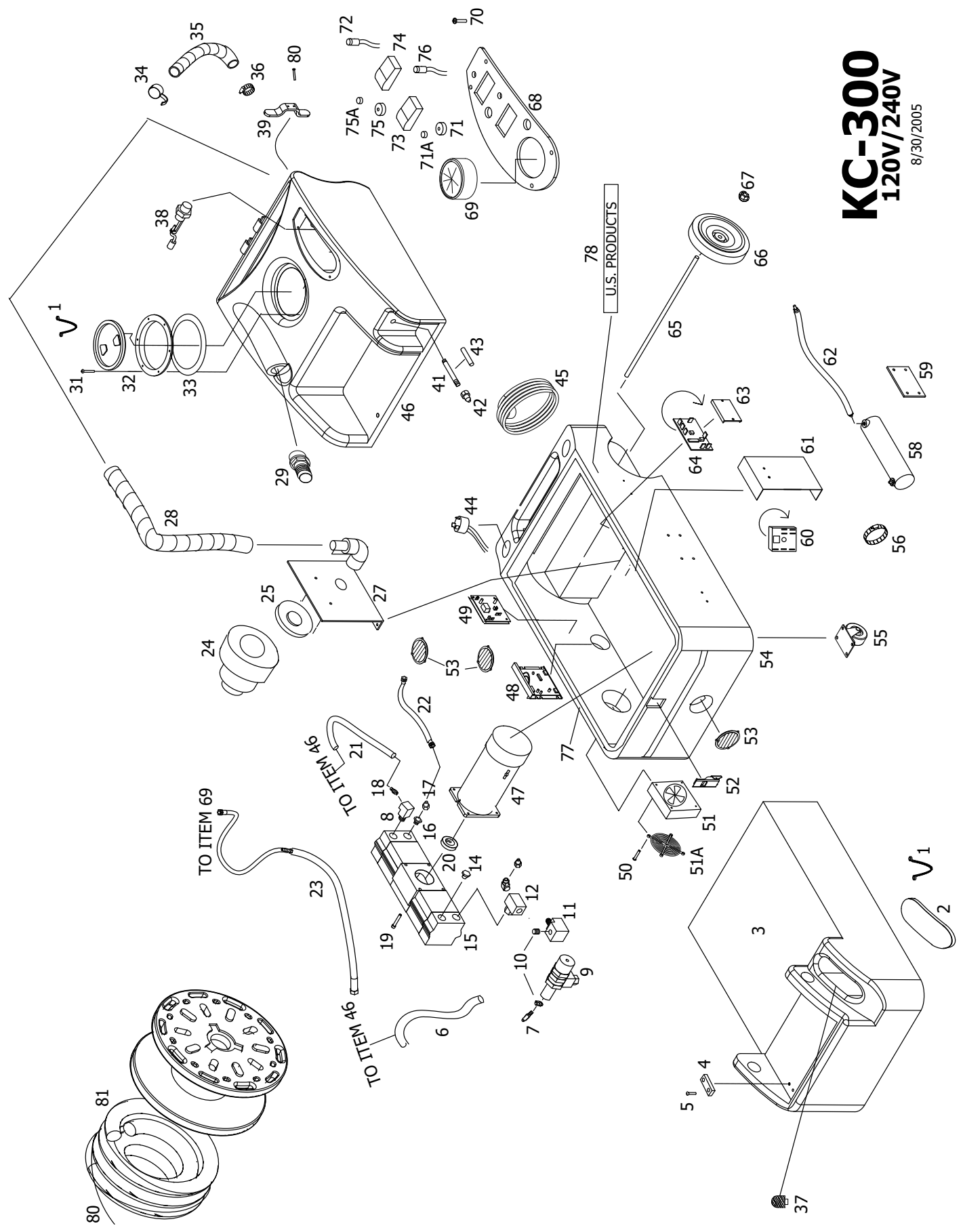
When the recovery tank is full, the electronic float switch will turn the vacuum motor off. This will prevent water from entering the vacuum motor. The float may not work properly if the float filter rod is dirty or if there is heavy foam in the tank. To reset, turn the Vacuum switch off, and empty the tank.

**⚠CAUTION:** to avoid vacuum motor damage, always make sure the float filter is clean and that it can travel freely before you operate the machine. Always use a defoamer any time foam is present.

# KC-300

120V/240V

8/30/2005



# KING COBRA-300 EXTRACTOR

## 120V PART LIST 240V

<u>ITEM</u>	<u>PART No.</u>	<u>DESCRIPTION</u>	<u>ITEM</u>	<u>PART No.</u>	<u>DESCRIPTION</u>
1	805	Chain, lid, 8"	51	2014	Fan, cooling, <b>120V</b>
2	901B	Lid, solution tank		2018	Fan, cooling, <b>240V</b>
3	HKCR1	Holding tank	51A	2015	Guard, fan
4	1088	Glide, teflon	52	908A	Latch, draw, rubber
5	178	Screw, 6-32 X 1/2"	53	928	Louver, 3", includes 3 screws
6	925	Hose, 3/8" I.D. X 24"	54	BKCR-BLK	Base, black
7	164	Hose Barb, brass, 3/8" hose	55	905	Castor, 4"
8	91	Elbow, brass	56	176	Hose clamp
9	945	Valve, bypass	58	FP348	Heat exchanger, <b>120V</b>
10	92A	Nipple, S/S		FP349	Heat exchanger, <b>240V</b>
11	216	Elbow, brass	59	455	Bracket, mounting, heater
12	168	"T", brass, 1/4 p.t.	60	----	See miscellaneous parts and kits
14	211	Plug, brass, 1/4 p.t.	61	918	Plate, heat sink
15	FP472	Pump complete, no motor	62	FP348A	Hose, heater to outlet
16	97	Reducer, brass	63	FP336	Snap track, PCB mounting, 4", <b>120V</b> only
17	223	Quick Connect, male, 1/8 p.t.	64	923B*	PCB, circuit sensor, <b>120V</b> only
18	165	Hose barb, brass, 1/2" hose	65	910	Axle, 21"
19	1147	Cap screw, pump to motor	66	2084	Wheel, 10"
20	950A	Cam/bearing assembly	67	27A	Axle cap
21	946	Hose, 1/2" I.D. X 22-1/2"	68	943B	Switch plate
22	FP356A	Hose, pump to heater	69	951A	Pressure gauge
23	FP344	Hose assembly, pump to gauge	70	28	Screw
24	913	Vacuum motor, 3-stage, <b>120V</b>	71	FP399	Potentiometer, with cable, pump
	913A	Vacuum motor, 3-stage, <b>240V</b>	71A	248	Knob, blue top, for pump speed
25	959	Gasket, vacuum motor	72	78B	Light, red
27	926	Manifold, vacuum motor mount	73	FP345	Switch & actuator, vacuum
28	1136	Hose, vacuum inlet, 1-1/2" X 24"	74	FP346	Switch & actuator, bypass
29	907	Hose barb, for vacuum hose	75A	248	Knob, red top, for heat adjustment
31	1148	Screw, 8-32 X 1"	75	FP347	Potentiometer, with wires, heat
32	2086	Lid, vacuum, with ring	76	78	Light, green
33	1074	Gasket, lid	77	FP351	Gasket, (#1043 X 84")
34	1060C	Plug cap, drain hose	78	942D	Label, KC-300
35	1060B	Hose, drain, 1-1/2" X 24"	80	FP350B	Pressure line complete, 25' with swivel
	FP398	Hose and cap, drain	81	FP350A	Vacuum hose complete, 25' with swivel cuff
36	156	Hose clamp			
37	207A	Filter, pump inlet			
38	2026	Float switch			
39	CWKC-BLK	Cord wrap	FP194A		Heat repair kit includes probe, thermistor control and circuit board <b>120V</b>
41	1146	Pipe, 6.85", S/S	FP226A		Heat repair kit includes probe, thermistor control, <b>240V</b>
42	45	Quick connect, male, 1/4 p.t.	FP194C		Heat repair kit includes probe, thermistor control, thermal cutout, <b>120V</b>
43	1144	Rubber sleeve, 1/2" ID X 5"			
44	1062	Receptacle, power cord	FP226C		Heat repair kit includes probe, thermistor control, thermal cutout, <b>240V</b>
45	1057B	Power cord, 25 ft, 3/12, yellow			
46	VKCR1	Vacuum tank, white	FP471		Pump & motor complete, 300 psi, <b>120V</b>
47	948B	Motor, pump, DC out, <b>120V</b>	250		Pump rebuild kit, piston and seals
	949B	Motor, pump, DC out, <b>240V</b>	SYP1		Syphon, priming hose
48	FP314	PCB, pump motor speed, <b>120V</b>	*923		PCB, circuit sensor, <b>120V</b> only (Machines made before 7-22-05)
	FP316	PCB, pump motor speed, <b>240V</b>			
49	FP225	PCB, vacuum control, <b>120V</b>	FP350		Reel, complete, with hoses
	FP225A	PCB, vacuum control, <b>240V</b>	FP350C		Vacuum hose & pressure line, complete, no reel
50	2B1	Screw, 6-32 X 2-1/4"			

### MISCELLANEOUS PARTS AND KITS

FP194A	Heat repair kit includes probe, thermistor control and circuit board <b>120V</b>
FP226A	Heat repair kit includes probe, thermistor control, <b>240V</b>
FP194C	Heat repair kit includes probe, thermistor control, thermal cutout, <b>120V</b>
FP226C	Heat repair kit includes probe, thermistor control, thermal cutout, <b>240V</b>
FP471	Pump & motor complete, 300 psi, <b>120V</b>
250	Pump rebuild kit, piston and seals
SYP1	Syphon, priming hose
*923	PCB, circuit sensor, <b>120V</b> only (Machines made before 7-22-05)
FP350	Reel, complete, with hoses
FP350C	Vacuum hose & pressure line, complete, no reel

# **KING COBRA® 300 120V**

## **SPECIFICATIONS:**

**Rotomolded Body: Lifetime Warranty**

**Vacuum: 7.2" 3-stage**

**VAC Shutoff: Electronic**

**Pump: Positive displacement 300 psi carpet**

**Waterlift: 140"**

**Heat: Fully adjustable to 212 °F**

**Heater: 2000 Watts**

**Wand: Stainless steel, double bend, twin tip**

**Weight: 122 lbs.**



208-772-0573 • 800-257-7982 • FAX: 208-772-0577

Coeur d'Alene, Idaho

VISIT US AT: <http://www.usproducts.com>