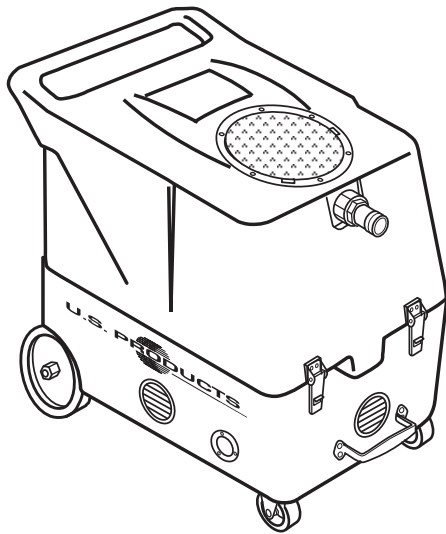




# FLOOD PUMPER 120V



## INFORMATION & OPERATING INSTRUCTIONS

**DO NOT OPERATE MACHINE UNTIL YOU HAVE READ ALL SECTIONS OF THE INSTRUCTIONS. IMPROPER USE OF THE MACHINE WILL VOID THE WARRANTY**

1. Always use a defoamer when foaming occurs to prevent vacuum motor damage.
2. Always be sure to remove the cap on the pump-out fitting, and connect the dump hose, before turning the pump(s) on.
3. Keep all filters clean. Do not operate the machine if the filters are clogged.
4. Keep machine from rain and snow, extremes in temperatures, and store in a heated location.
5. Do not let pump run dry for extended periods of time.

# IMPORTANT SAFETY INSTRUCTIONS

This machine is only suitable for commercial use, for example in hotels, schools, hospitals, factories, shops and offices other than normal residential housekeeping purposes.

When using any electrical appliance, basic precautions should always be followed, including the following:

**NOTE:** Read all instructions before using this machine.

## **WARNING!**

To reduce the risk of fire, electric shock, or injury:

- Do not leave the machine unattended when it is plugged in. Unplug the unit from the outlet when not in use and before servicing.
- To avoid electric shock, do not expose to rain or snow. Store, and use, indoors.
- Do not allow to be used as a toy. Close attention is necessary when used near children.
- Use only as described in this manual. Use only the manufacturer's recommended attachments.
- Do not use with damaged cord or plug. If the machine is not working as it should, has been dropped, damaged, left outdoors or dropped into water, return it to a service center.
- Do not pull by the cord, use the cord as a handle, close a door on the cord, or pull the cord around sharp edges or corners. Do not run the machine over the cord. Keep the cord away from heated surfaces. To unplug, grasp the plug, not the cord.
- Do not handle the plug, the cord, or the machine with wet hands.
- Extension cords must be 12/3 and no longer than 50 feet. Replace the cord or unplug immediately if the ground prong becomes damaged.
- Do not put any object into openings. Do not use with any opening blocked; keep free of dust, lint, hair, and anything that may reduce air flow.
- Keep loose clothing, hair, fingers, and all parts of body away from openings and moving parts.
- Do not pick up anything that is burning or smoking, such as cigarettes, matches, or hot ashes, or any health endangering dusts. Do not use to pick up flammable or combustible liquids such as gasoline or use in areas where they may be present.
- Turn off all controls before unplugging.
- Connect to a properly grounded outlet only.
- Check hose clamps regularly to make sure they are tight. The pump discharges water at high pressure. If a hose clamp becomes loose, the hose could also come loose, or all off of the hose barb, and leak water into the base compartment
- Liquid flowing from the dump hose may be dangerous as a result of its temperature, pressure, chemical content, or contaminants.

**INSPECTION:**

Carefully unpack and inspect your FLOOD PUMPER for shipping damage. Each machine is tested and inspected before shipping. Any damage incurred during shipping is the responsibility of the carrier. You should notify the carrier immediately if you notice damage to the box or to the machine or parts.

**MAINTENANCE:**

Prior to each job, inspect the recovery tank filters, the in-line filters, the float, and the drain gate to make sure every thing is clean and able to function properly. After each job, remove and clean both the nylon mesh strainer at the vacuum inlet and the stainless steel filters in the bottom of the recovery tank. Unscrew the clear caps off the in-line filters (located under the recovery tank) and clean the screens often. Pump damage may occur if the filters become clogged.

Check hose clamps regularly to make sure they are tight. The pump discharges water at high pressure. If a hose clamp becomes loose, the hose could also come loose, or fall off of the hose barb, and leak water into the base compartment.

Lubricate the wheels, castors, latches, and quick disconnects with an all purpose silicone spray. The vacuums and the pumps do not require any scheduled maintenance; however the vacuum motors may require new brushes after 1000 - 1500 hours. Clean the body with an all purpose detergent, and protect it with an automobile interior polish.

**NOTE:** This machine is only suitable for commercial use, for example in hotels, schools, hospitals, factories, shops and offices other than normal residential housekeeping purposes.

**Record the serial number and model of your new Flood Pumper here: (and be sure to mail your warranty card)**

**Serial Number:** \_\_\_\_\_ **Model:** FLOOD PUMPER

**Purchase Date:** \_\_\_\_\_

**Write the name and phone number of the distributor from whom you purchased this machine:** \_\_\_\_\_

\_\_\_\_\_  
\_\_\_\_\_

## SET-UP:

Connect the vacuum/recovery hose to the vacuum inlet hose barb on the front of the recovery tank. Connect one or two of the dump hoses to the hose fitting on the rear of the machine. Put the lid on the recovery tank. Plug the machine into a grounded outlet.

## VACUUM OPERATION:

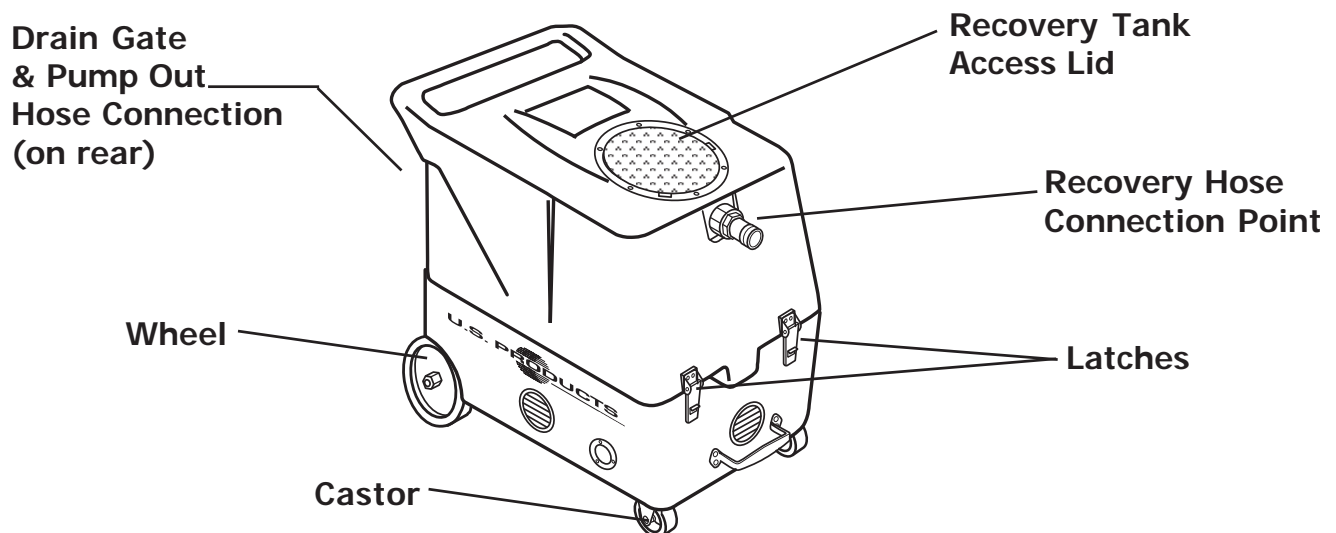
A switch is provided for each vacuum motor. The machine can operate with either one or both vacuum motors running. If only one vacuum is needed, use VAC 1; a one-way valve allows VAC 1 to create a suction by preventing air from being pulled through VAC 2, when VAC 2 is not running.

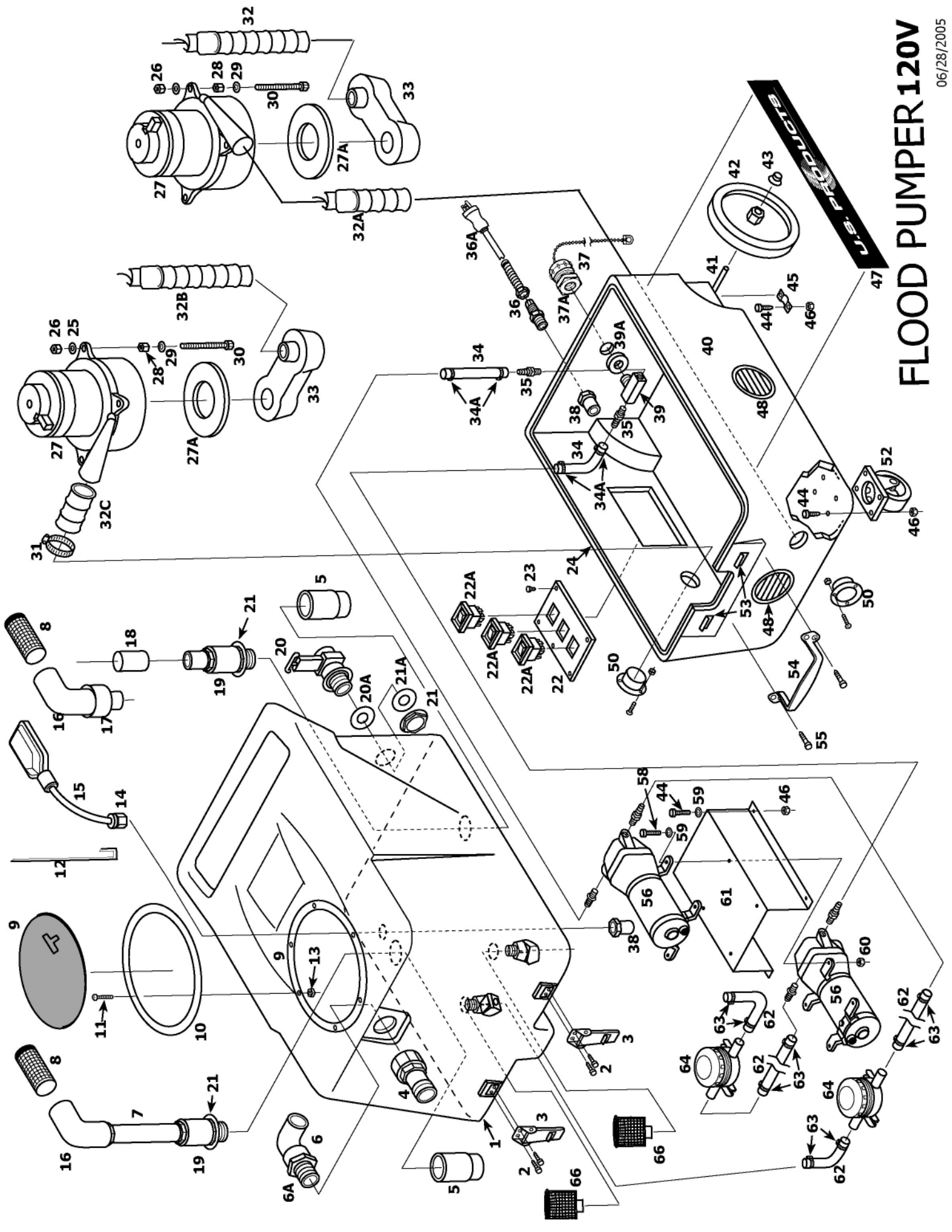
## VACUUM SHUT-OFF:

When the recovery tank is full, the float system will shut off power to the vacuum motor(s) to prevent water from entering the motor(s). The float may not work properly if it is extremely dirty or if there is foam in the tank. Once the tank is emptied sufficiently, the vacuums will come back on automatically.

## PUMP OPERATION:

Always be sure to uncap the pump-out fitting and connect the dump hose before turning the pumps on. Failure to do so may result in blown hoses or loose fittings; water will damage motors and switches. The two diaphragm pumps on your Flood Pumper work together. When you turn the pump switch on, both pumps will run, and they will continue to run until you turn them off. Do not let the pumps run dry for extended periods of time.





# FLOOD PUMPER 120V

# FLOOD PUMPER 120V PART LIST

<u>ITEM</u>	<u>PART #</u>	<u>DESCRIPTION</u>	<u>ITEM</u>	<u>PART #</u>	<u>DESCRIPTION</u>
#1	FP389	Recovery Tank, Complete	#41	910	Axle, 18-13/16"
#2	382C	Screw, Stainless Steel, 8-32" X 7/8"	#42	2003	Wheel, 8"
#3	908	Latch	#43	27A	Axle Cap, Black
#4	2077	Hose Barb, Vacuum Inlet	#44	5	Bolt, 1/4-20 X 3/4"
#5	2073	Elbow, PVC, 2"	#45	180	Bracket, Axle
#6	2075	Adaptor, PVC, 1-1/2"	#46	8	Lock Nut, 1/4-20
#7	935	Pipe, PVC	#47	2071	Label, USP
#8	929	Filter, Vacuum Inlet	#48	928	Louver, 3"
#9	2070B	Lid, with Ring** (see Misc.)	#50	FP220	Flange, Exhaust, Complete
#10	1129	Gasket, for Lid** (see Misc.)	#52	2002	Castor, Swivel, 3"
#11	382	Screw, 10/32 x 7/8", S/S	#53	909A	Latch Strike for Latch, S/S
#12	2082	Bracket, Float	#54	2010	Handle, Chrome
#13	17	Lock Nut, Nylon, 10-32, S/S	#55	193	Screw, 1/4-20 X 3/4"
#14	230	Retainer, Cord, Water Tight	#56	2067	Pump, Diaphragm, Sump, Complete
#15	2068	Float Switch	#58	204	Screw, S/S, 12-24 X 1-1/4"
#16	900	Elbow, PVC, 90 Degrees	#59	14	Washer, 3/16", Flat
#17	935	Pipe, PVC, 1-1/2 ID	#60	204A	Lock Nut, 12-24, S/S
#18	2081	Check Valve	#61	2076	Bracket, Mounting, Pump
#19	900A	Reducer, PVC	#62	2079	Hose, 3/4", Polywire, 7"
#20	903	Drain Gate* (see Misc.)	#63	380	Hose Clamp
#20A	187	O-Ring, Small	#64	2074	Filter, Pump, Inline, S/S
#21	185	Nut, Cast Aluminum	#66	2069	Filter, Pump, 60 Mesh, in Tank
#21A	190	O-Ring, Large			
#22	2006	Switch Plate			
#22A	FP311	Switch, Pump, Vacuum, w/Cover			
#23	28	Screw, #4 x 3/8"			
#24	FP228A	Gasket, Base	*FP231A		Drain Gate Assembly, Complete with O-Rings and Nut.
#25	14	Washer, 3/16"	**2070		Lid with Ring (Machines made before 8-03)
#26	8	Lock Nut, 1/4-20	**2070A		Gasket, for Lid (Machines made before 8-03)
#27	FP324	Vacuum Motor Complete w/Connectors	#919C		Vacuum Hose, 2" X 25'
#27A	2013	Gasket, Vacuum Motor	#956A		Hose, Dump 3/4" X 50'
#28	136	Nut, 1/4-20	#717		Hose Cuff Reducer
#29	137	Washer, Lock, 1/4"	#971		Bag, Mesh, White
#30	135	Bolt, 1/4-20 x 3-1/2"	#2088		Pre-Filter, Inlet
#31	156	Hose Clamp, Size 28			
#32	1302	Hose, Vacuum, 2" x 13"			
#32A	430	Hose, Vacuum, 2" x 9"			
#32B	1301	Hose, Vacuum, 2" x 18"			
#32C	430	Hose, Exhaust, 2" x 2"			
#33	MA-6	Manifold, Black			
#34	2079	Hose, 3/4", Polywire, 11"			
#34A	380	Hose Clamp			
#35	378	Hose Barb, 3/4" x 1/2 m.p.t., Brass			
#36	184	Cord Retainer			
#36A	495A	Power Cord, Yellow, 25'			
#37	237	Cap, with Chain and Hose Connection			
#37A	239	Adapter, 3/4" Hose x 3/8 m.p.t., Brass			
#38	937	Reducer, PVC			
#39	152	"T", brass			
#39A	152A	Washer, Flat, S/S, 7/8"			
#40	BS-6	Base, Black			

### Micellaneous Parts / Assessories

## **SPECIFICATIONS:**

<b>POWER CORD:</b>	<b>One, 25 ft, 12 gauge, 3-wire with hospital grade plug</b>
<b>POWER CONSUMPTION:</b>	<b>13 amps, total</b>
<b>RECOVERY CAPACITY:</b>	<b>12 gallon</b>
<b>VACUUM INTAKE HOSE:</b>	<b>2' X 25'</b>
<b>VACUUM MOTOR(s):</b>	<b>Two 2-stage vacuum motors</b>
<b>WATER LIFT:</b>	<b>90 inches</b>
<b>CFM:</b>	<b>200</b>
<b>OVERFLOW PROTECTION:</b>	<b>Electronic Float / Auto ON/OFF</b>
<b>DISCHARGE PUMPS:</b>	<b>Two diaphragm pumps</b>
<b>DISCHARGE HOSE:</b>	<b>One 3/4" X 50'</b>
<b>DISCHARGE RATE:</b>	<b>10.5 GPM</b>
<b>FILTER SYSTEM:</b>	<b>One mesh strainer at the water inlet to the recovery tank</b> <b>Two 50 mesh S/S filters in recovery tank</b> <b>Two 50 mesh S/S screens in-line</b>
<b>WEIGHT:</b>	<b>77 LBs</b>

# FLOOD PUMPER 120V

**NOTES:**



208-772-0573 ◦ 800-257-7982 ◦ FAX: 208-772-0577

Coeur d'Alene, Idaho

VISIT US AT: <http://www.usproducts.com>