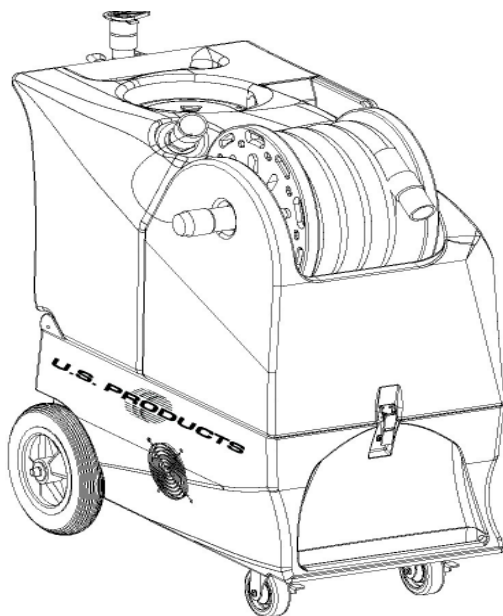




CP-300 EXTRACTOR 120V



INFORMATION & OPERATING INSTRUCTIONS

**DO NOT OPERATE MACHINE UNTIL YOU HAVE READ
ALL SECTIONS OF THE INSTRUCTIONS**

IMPROPER USE OF THE MACHINE WILL VOID THE WARRANTY

1. Always use a defoamer when foaming occurs to prevent vacuum motor damage.
2. Keep machine from rain and snow, extremes in temperatures, and store in a heated location. Use the machine indoors. Do not use outdoors.
3. Do not let the pump run dry.
4. Use approved chemicals only. NO SOLVENTS.
5. Wear gloves or use rags when removing quick disconnects to prevent burns.

IMPORTANT SAFETY INSTRUCTIONS

This machine is only suitable for commercial use, for example in hotels, schools, hospitals, factories, shops and offices other than normal residential housekeeping purposes.

When using any electrical appliance, basic precautions should always be followed, including the following:

NOTE: Read all instructions before using this machine.

WARNING!

To reduce the risk of fire, electric shock, or injury:

- Do not leave the machine unattended when it is plugged in. Unplug the unit from the outlet when not in use and before servicing.
- To avoid electric shock, do not expose to rain or snow. Store, and use, indoors.
- Do not allow to be used as a toy. Close attention is necessary when used near children.
- Use only as described in this manual. Use only the manufacturer's recommended attachments.
- Never add water over 130° F/54° C to the solution tank.
- Do not use with damaged cord or plug. If the machine is not working as it should, has been dropped, damaged, left outdoors or dropped into water, return it to a service center.
- Do not pull by the cord, use the cord as a handle, close a door on the cord, or pull the cord around sharp edges or corners. Do not run the machine over the cord. Keep the cord away from heated surfaces. To unplug, grasp the plug, not the cord.
- Do not handle the plug, the cord or the machine with wet hands.
- Extension cords must be 12/3 and no longer than 50 feet. Replace the cord or unplug immediately if the ground prong becomes damaged.
- Do not put any object into openings. Do not use with any opening blocked; keep free of dust, lint, hair, and anything that may reduce air flow.
- Keep loose clothing, hair, fingers, and all parts of body away from openings and moving parts.
- Do not pick up anything that is burning or smoking, such as cigarettes, matches, or hot ashes, or any health endangering dusts. Do not use to pick up flammable or combustible liquids such as gasoline or use in areas where they may be present.
- Turn off all controls before unplugging.
- Use extra care when cleaning on stairs.
- Connect to a properly grounded outlet only.
- Liquid ejected at the spray nozzle could be dangerous as a result of its temperature, pressure, or chemical content.

INSPECTION:

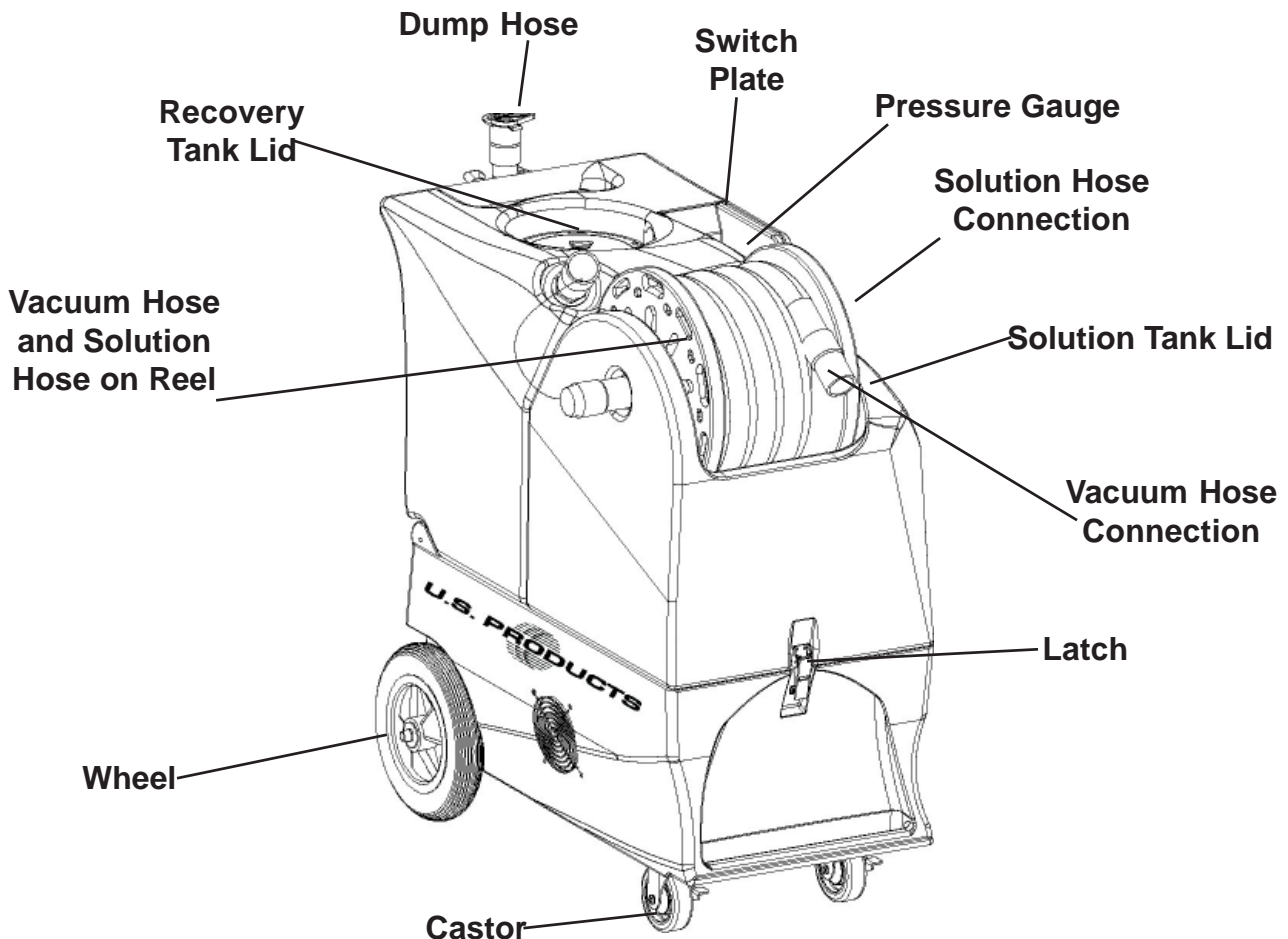
Carefully unpack and inspect your COBRA PLUS-300 for shipping damage. Each machine is tested and inspected before shipping. Any shipping damage incurred is the responsibility of the carrier. You should notify the carrier immediately if you notice damage to the box or to the machine or parts.

CLEANING SOLUTIONS:

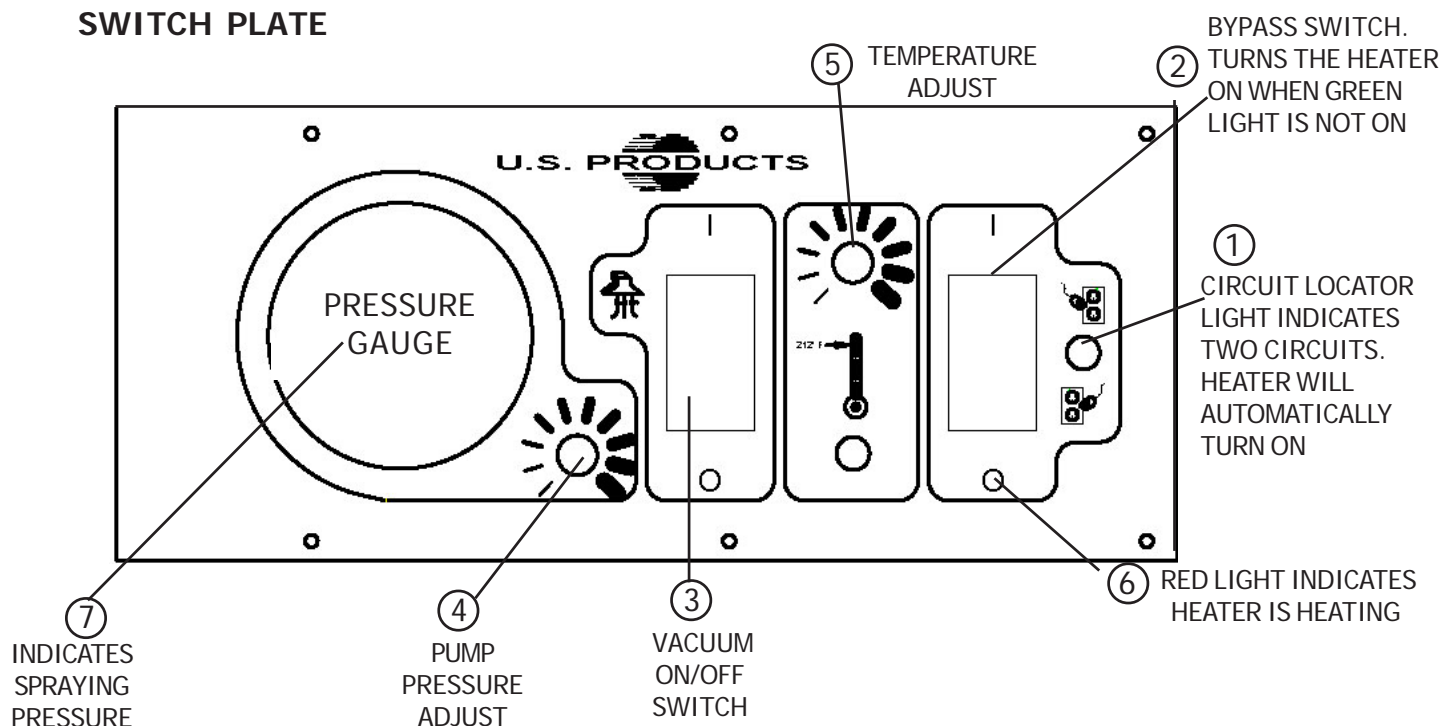
We recommend liquid cleaning chemicals, such as our Magic Fabric Cleaner. Powder chemicals may be used, but unless mixed very thoroughly they could cause a build-up in the pump, lines, heat exchanger and/or quick disconnects. Any problem caused by a chemical build-up is not covered by warranty. Use a neutral cleaner with a pH between 6 and 9 to avoid premature wear of the pump, seals, and/or other components. Damage caused by the use of strong chemicals is not covered by the warranty.

MAINTENANCE:

For optimum performance flush the machine with clear water at the end of each working day. Once a month, minimum, run a flushing compound through the machine to break up any mineral or chemical build-up that may have formed. U.S. Products "X-1500" is recommended. The vacuum motor, pump motor, and the pump do not require any scheduled maintenance; however, the motors may require replacement brushes after 1000 - 1500 hours, and the pump and bypass valve may require rebuild kits after 1000 - 1500 hours, typically (refer to machine part list for numbers) Clean the body with an all purpose detergent, and protect it with an automobile interior polish. Lubricate the wheels, castors, and quick disconnects with an all purpose silicone spray.



SWITCH PLATE



Record the serial number and model of your new extractor here:

(and be sure to mail your warranty card)

Serial Number: _____

Model: COBRA PLUS-300

Purchase Date: _____

Write the name and phone number of your distributor:

OPERATION

- 1 Inspect the machine, hoses, and cleaning tools for cleanliness and completeness.
- 2 Fill the solution tank with water. Using warm water may be a benefit in cleaning effectiveness, but do not use hot water (above 130° F / 54°C) in the tank.
- 3 Plug in the power cords. Do not connect both cords to the same outlet; the green, circuit locator light on the switch plate should light up. If the locator light does not come on, try different outlets with one of the cords until it does. If you are certain the cords are on separate circuits, turn the Bypass switch on.

CAUTION: using the Bypass switch when the cords are on the same circuit may cause the breaker in the wall to trip. **NOTE:** the receptacle on the left (viewed from behind the machine) powers the heater. The red light will turn on only when the heat exchanger is actively heating.

- 4 Connect the priming hose to the machine, turn the pump ON by turning the pump pressure knob up to

increase pump speed, and prime the air out of the pump. When the water is clear (no air in it) turn the pump off, and remove the priming hose. **NOTE:** if priming is difficult, place the open end of the priming hose into the Vacuum inlet hose barb, and turn the vacuum on. Use your hand to block the open area in the hose barb. This will allow the pump and the vacuum to work together to get the water moving. Priming may take 20 - 60 seconds, and the solution tank should be full. Turn motors off. Remove priming hose.

- 5 Add liquid cleaning chemical, with a pH between 6 and 9, to the solution tank.
- 6 Attach the spray hose to the solution quick disconnect and the vacuum hose to the hose barb on the recovery tank. Pull the hoses out from the reel. Attach the other ends of the hoses to the cleaning tool.
- 7 Set the temperature knob to the desired heat setting. Allow the heat exchanger two minutes to reach operating temperature. The red light will go out when the heater has reached operating temperature. **NOTE:** the red light will be on nearly all the time as you clean.
- 8 Turn the pump on by setting the pressure adjust knob to the desired spraying pressure (0 - 300 PSI). Read the spraying pressure at the pressure gauge while spraying. Turn the vacuum on. **NOTE:** the vacuum motor will start up slowly to prevent a large current surge.
- 9 Begin cleaning.
- 10 Use defoamer in the recovery tank any time foaming occurs.
- 11 Monitor the water level in the solution tank. Do not let the pump run dry.
- 12 When the solution tank gets low, turn off the pump and the vacuum, fill the solution tank, empty and clean the recovery tank.
- 13 When finished with the job, remove any unused solution from the solution tank, and run a few gallons of clean water through the system. Drain the recovery tank by placing the dump hose over a drain, or a bucket, and removing the cap. Disconnect the hoses from the cleaning tool, and reel them up onto the hose spool.

NOTE: To remove the reel, with hoses, from the machine, pull the vacuum hose loose from the hose barb on the front of the tank. Disconnect the solution hose quick coupling. Push vacuum hose into the center of the hose spool. Grasp the spool from both sides, and lift it off the machine. **NOTE:** before servicing any component in the base cabinet, the hoses and spool must be removed from the machine before the tanks can be lifted open.

ELECTRIC CIRCUIT LOCATOR

This unique, patented system is operated by a solid state circuit. It will inform the operator when the two cords are plugged into separate circuits by turning on the green, circuit locator light. This helps to prevent tripping circuit breakers.

NOTE: if the green, circuit locator light does not illuminate when the cords are plugged in, then both cords are on the same circuit. Try other outlets with one of the cords until you get the locator light to come on.

NOTE: if the bypass switch is turned on when both cords are on the same circuit, the breaker in the wall may trip.

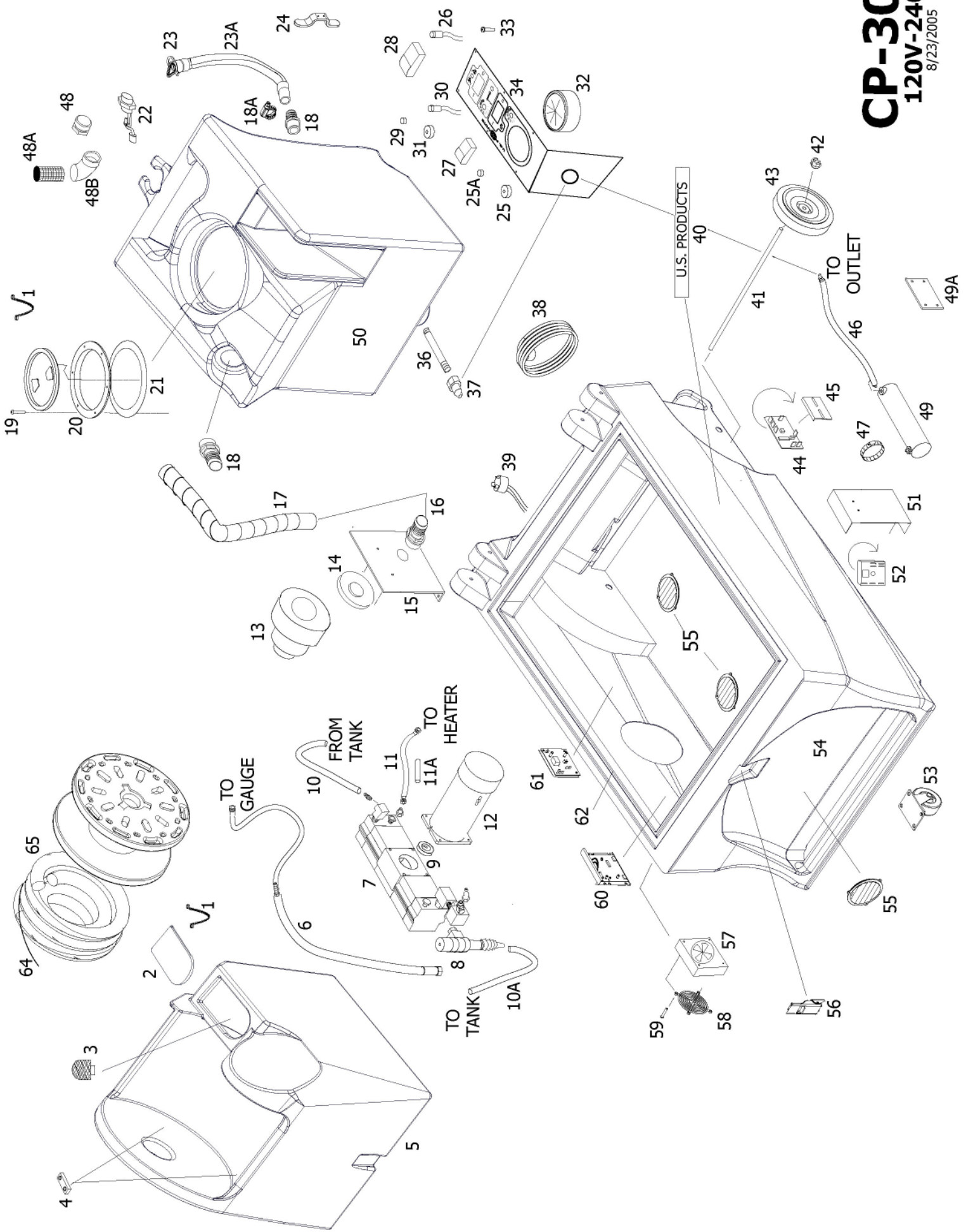
ELECTRONIC FLOAT SHUT-OFF

When the recovery tank is full, the electronic float switch will turn the vacuum motor off. This will prevent water from entering the vacuum motor. The float may not work properly if the float filter rod is dirty or if there is heavy foam in the tank. To reset, turn the Vacuum switch off, and empty the tank.

⚠ CAUTION: to avoid vacuum motor damage, always make sure the float filter is clean and that it can travel freely before you operate the machine. Always use a defoamer any time foam is present.

CP-300

120V-240V
8/23/2005



COBRA PLUS-300 EXTRACTOR

PART LIST

120V

<u>ITEM</u>	<u>PART No</u>	<u>DESCRIPTION</u>	<u>ITEM</u>	<u>PART No.</u>	<u>DESCRIPTION</u>
1	805	Chain, lid, 8"	45	FP336	Snap track, 4" PCB mounting
2	FP446	Lid, holding tank	46	1377	Hose, hydraulic, 27-3/4"
3	207A	Filter, pump inlet	47	76	Hose clamp
4	1088	Glide, teflon	48	1137	Adapter, ABS, 1-1/2"
5	HCP-1	Holding tank, white	48B	1139	Elbow, 45 degree, 1-1/2, ABS
6	FP421	Hose assy, pump to gauge	48A	929	Filter, vac inlet, S/S
7	FP447	Pump complete, no motor	49	FP485	Heat exchanger, complete 120V
8	945	Bypass valve, complete	49A	455	Bracket, mounting, heater
9	950A	Cam & bearing	50	VCP-1	Vac tank, white
10	FP170	Hose, pump inlet, 1/2" X 18"	51	918	Heat sink plate
10A	FP169C	Hose, pump bypass, 3/8" X 18"	52	--	See miscellaneous parts**
11	1373	Hose, pump to heater, 15-3/4"	53	905	Castor, 4"
11A	460	Tubing, 3/4" X 3"	54	BKCR-BLK	Base, black
12	948B	Motor, DC, pump drive	55	928	Louver, 3", includes 3 screws
13	913	Vacuum motor, 3-stage	56	908A	Latch
14	959	Gasket, vacuum	57	2014	Fan, cooling, 120V
15	926	Manifold, vacuum mounting	58	2015	Guard, fan
16	907	Hose barb/manifold	59	2B1	Screw, 6-32 X 2-1/4"
17	1076	Hose, Vacuum inlet, 2" X 12"	60	FP361	Motor speed control board, assembly
18	907	Hose barb / vacuum hose	61	FP225	Vacuum control circuit board
18A	156	Hose clamp	62	FP228A	Gasket, #2050 X 87"
19	1156	Screw, lid, 8-32 X 1-1/8"	64	FP443	Solution hose, complete
20	2086	Lid, vacuum and mounting ring	65	919G	Vacuum hose, complete
21	1074	Gasket, lid			
22	2026	Switch, vacuum float			
23	1060C	Cap, drain hose			
23A	1060B	Hose, drain			
24	CWKC-BLK	Cord wrap, Black			
25	FP408	Potentiometer w/cable, pump speed			
25A	249	Knob, for potentiometer, blue	**FP194C		Heat repair kit, complete, with thermistor control, cutout, probe & circuit board
26	78	Light, green	**FP194A		Heat repair kit includes probe, thermistor control & circuit board
27	FP345	Switch & actuator, vacuum	923*		Dual cord sensor board (Machines made before 7-22-05)
28	FP346	Switch & actuator, bypass	FP445		Vacuum hose & pressure line, complete
29	248	Knob, for potentiometer, red	FP444		Vacuum hose & pressure line with reel, complete
30	78B	Light, red	229		Pump rebuild kit, valves and o-rings
31	FP347	Potentiometer, heat adjustment	250		Pump rebuild kit, piston and seals
32	951A	Pressure gauge	FP448		Pump & motor, complete
33	28	Screw, #4 X 3/8"			
34	1356	Switch plate, CP-300			
36	92C	Pipe, 6.85", S/S			
37	45	Quick connect, male, 1/4 p.t.			
38	1057B	Power Cord, 12/3, 25', yellow			
39	1062	Recepticle, power cord			
40	1128005	Label, CP-300			
41	910	Axle rod, 18-1/4"			
42	27A	Axle cap			
43	2084	Wheel, 10"			
44	923B*	Dual cord sensor board			

MISCELLANEOUS PARTS

08/25/2005

CP-300 EXTRACTOR 120V

SPECIFICATIONS:

Rotomolded Body: Lifetime Warranty
Vacuum: 7.2", 3-stage soft start vac
VAC Shutoff: Electronic
Pump: Positive displacement, fully adjustable, 0-300 psi
Waterlift: 140"
Heat: Fully adjustable 145°F to 212° F
Heater: 2000 Watts
Wand: Stainless steel, double bend, twin tip
Weight: 105 lbs.
Dimensions: 38" H x 17 3/4" W x 36" L



208-772-0573 • 800-257-7982 • FAX: 208-772-0577

Coeur d'Alene, Idaho

VISIT US AT: <http://www.usproducts.com>