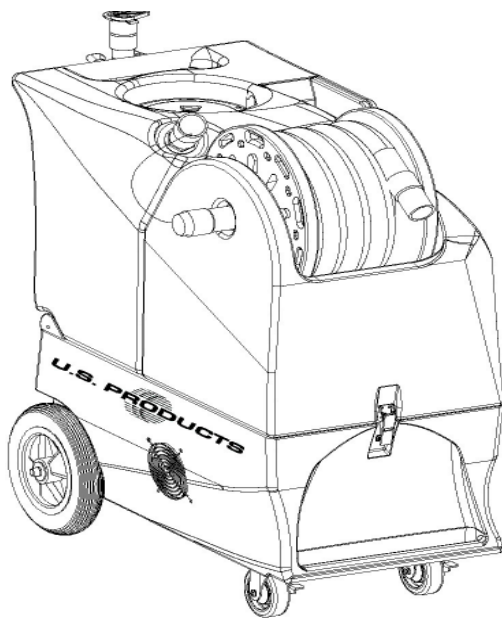




COBRA PLUS-150 EXTRACTOR 120V



INFORMATION & OPERATING INSTRUCTIONS

**DO NOT OPERATE MACHINE UNTIL YOU HAVE READ
ALL SECTIONS OF THE INSTRUCTIONS**

IMPROPER USE OF THE MACHINE WILL VOID THE WARRANTY

1. Always use a defoamer when foaming occurs to prevent vacuum motor damage.
2. Keep machine from rain and snow, extremes in temperatures, and store in a heated location. Use the machine indoors only.
3. Do not let pump run dry.
4. Use approved chemicals only. NO SOLVENTS.
5. Wear gloves or use rags when removing quick disconnects to prevent burns.
6. Never use water over 130 °F/ 54 °C in the machine.

IMPORTANT SAFETY INSTRUCTIONS

This machine is only suitable for commercial use, for example in hotels, schools, hospitals, factories, shops and offices other than normal residential housekeeping purposes.

When using any electrical appliance, basic precautions should always be followed, including the following:

NOTE: Read all instructions before using this machine.

WARNING!

To reduce the risk of fire, electric shock, or injury:

- Do not leave the machine unattended when it is plugged in. Unplug the unit from the outlet when not in use and before servicing.
- To avoid electric shock, do not expose to rain or snow. Store, and use, indoors.
- Do not allow to be used as a toy. Close attention is necessary when used near children.
- Use only as described in this manual. Use only the manufacturer's recommended attachments.
- Never add water over 130° F/54° C to the solution tank.
- Do not use with a damaged cord or plug. If the machine is not working as it should, has been dropped, damaged, left outdoors or dropped into water, return it to a service center.
- Do not pull by the cord, use the cord as a handle, close a door on the cord, or pull the cord around sharp edges or corners. Do not run the machine over the cord. Keep the cord away from heated surfaces. To unplug, grasp the plug, not the cord.
- Do not handle the plug, the cord or the machine with wet hands.
- Extension cords must be 12/3 and no longer than 50 feet. Replace the cord or unplug immediately if the ground prong becomes damaged.
- Do not put any object into openings. Do not use with any opening blocked; keep free of dust, lint, hair, and anything that may reduce air flow.
- Keep loose clothing, hair, fingers, and all parts of body away from openings and moving parts.
- Do not pick up anything that is burning or smoking, such as cigarettes, matches, or hot ashes, or any health endangering dusts. Do not use to pick up flammable or combustible liquids such as gasoline or use in areas where they may be present.
- Turn off all controls before unplugging.
- Use extra care when cleaning on stairs.
- Connect to a properly grounded outlet only.
- Liquid ejected at the spray nozzle could be dangerous as a result of its temperature, pressure, or chemical content.

INSPECTION:

Carefully unpack and inspect your COBRA PLUS-150 for shipping damage. Each machine is tested and inspected before shipping. Any shipping damage incurred is the responsibility of the carrier. You should notify the carrier immediately if you notice damage to the box or to the machine or parts.

CLEANING SOLUTIONS:

We recommend liquid cleaning chemicals, such as our Magic Fabric Cleaner. Powder chemicals may be used, but unless mixed very thoroughly they could cause a build-up in the pump, lines, heat exchanger and/or quick disconnects. Any problem caused by a chemical build-up is not covered by warranty. Use a neutral cleaner with a pH between 6 and 9 to avoid premature wear of the pump, seals, and/or other components. Damage caused by the use of strong chemicals is not covered by the warranty.

MAINTENANCE:

For optimum performance flush the machine with clear water at the end of each working day. Once a month, minimum, run a flushing compound through the machine to break up any mineral or chemical build-up that may have formed. U.S. Products "X-1500" is recommended. Lubricate the wheels, castors, and quick disconnects with an all purpose silicone spray. The vacuum and the pump do not require any maintenance; however the vacuum motors may require new brushes after 1000 - 1500 hours. Clean the body with an all purpose detergent, and protect it with an all purpose silicone spray like automobile interior polish.

RECORD AND KEEP THE FOLLOWING INFORMATION

Serial Number: _____

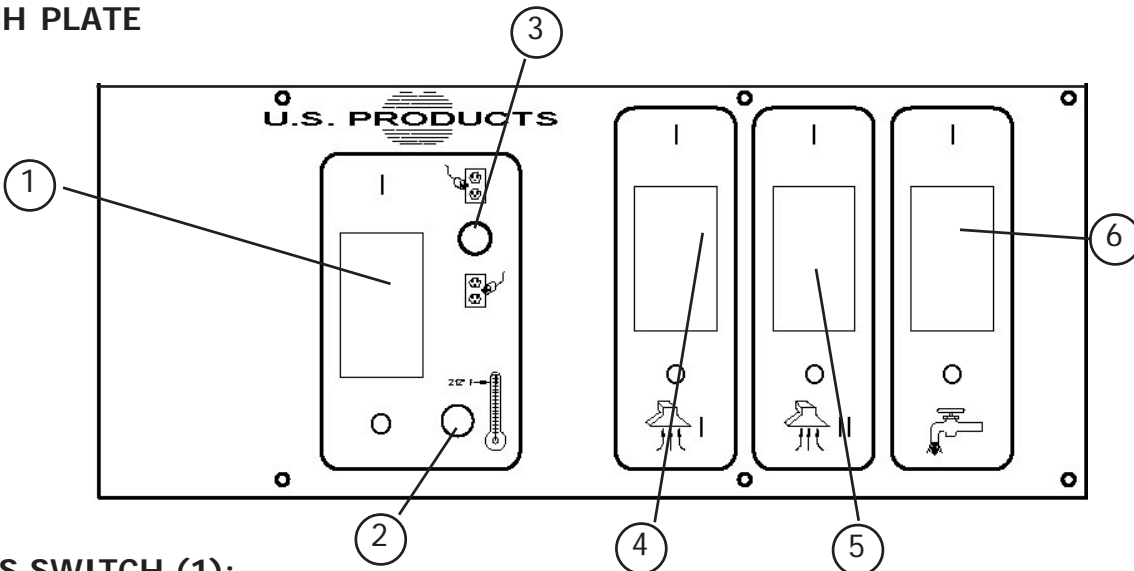
Model: CP-150

Purchase Date: _____

Write the name and phone number of your distributor: _____

**And don't forget to register your purchase to activate your warranty;
go on-line to www.usproducts.com or complete and return your warranty card**

SWITCH PLATE



BYPASS SWITCH (1):

Turning on this switch (switch illuminates when on) bypasses the circuit locator system. See OPERATION for a description of the Bypass Switch

RED LIGHT (2):

When this light is illuminated, it confirms that the machine is on two separate circuits

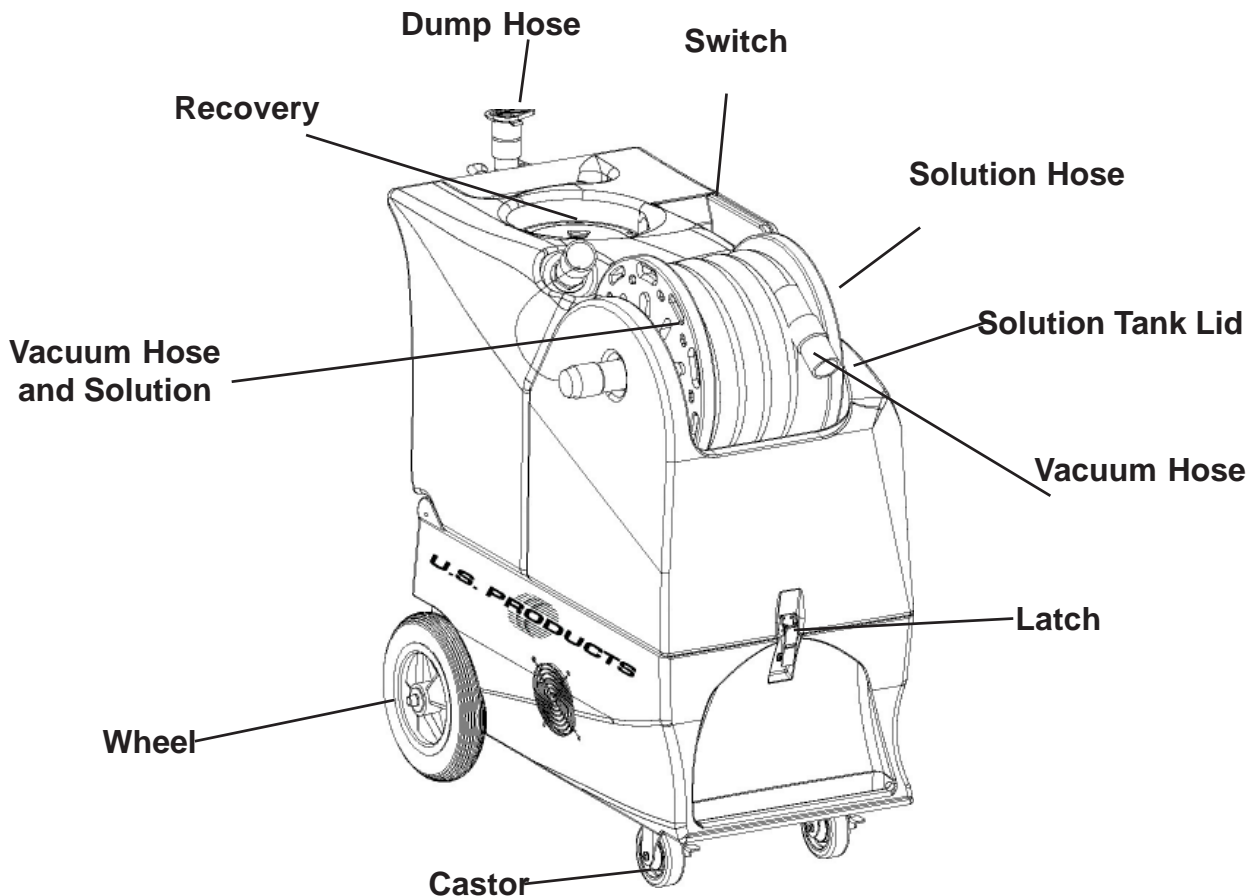
GREEN INDICATOR LIGHT (3):

When this light is illuminated, it confirms that the machine is on two separate circuits

VACUUM (4), VACUUM (5), AND PUMP (6) SWITCHES:

These switches are all powered by cord #1. Switches are on when illuminated.

COBRA PLUS-150



OPERATION

- 1 Inspect the machine, hoses, and cleaning tools for cleanliness and completeness.
- 2 Fill the solution tank with water. Using warm water may be a benefit in cleaning effectiveness, but do not use hot water (above 130 °F/54 °C) in the tank.
- 3 Plug in the power cords. Do not connect both cords to the same outlet; the green, circuit locator light (3) on the switch plate should light up. If the locator light does not come on, try different outlets with one of the cords until it does. If you are certain the cords are on separate circuits, but the green light still does light up, turn the Bypass switch (1) on. **CAUTION:** using the Bypass switch when the cords are on the same circuit may cause the circuit breaker in the wall to trip. **NOTE:** the receptacle on the left (viewed from behind the machine) powers the heater. The red light (2) will turn on when the heat exchanger is actively heating.
- 4 Add liquid cleaning solution, with a pH of between 6 and 9, to the solution tank.
- 5 Attach the spray hose to the solution quick disconnect and the vacuum hose to the hose barb on the recovery tank. Pull the hoses off the reel to the desired length. Attach the other ends of the hoses to the cleaning tool.
- 6 Allow the heat exchanger two minutes to reach operating temperature.
- 7 Turn on Vacuums 1 and 2 (4 & 5) and turn on the pump (6)
- 8 Begin cleaning using the correct hoses and tool.
- 9 Use defoamer in the recovery tank any time foaming occurs.
- 10 Monitor the water level in the solution tank. Do not let the pump run dry.
- 11 When the solution tank gets low, turn both the pump and the vacuum off, fill the solution tank, empty and clean the recovery tank.
- 12 When finished with the job, remove any unused solution from the solution tank, and run a few gallons of clean water through the system. Drain the recovery tank by placing the dump hose into a bucket or drain, and then remove the cap.

DUAL CORD SENSOR CIRCUIT:

This unique, patented system is operated by a solid state circuit. It will inform the operator when the two cords are plugged into separate circuits by turning on the green, circuit locator light. This helps to prevent tripping circuit breakers. **NOTE:** if the circuit locator light does not illuminate when the cords are plugged in, then both cords are on the same circuit. Try other outlets with one of the cords until you get the locator light to come on. **NOTE:** if the bypass, or heat, switch is turned on when both cords are on the same circuit, the breaker may trip.

BYPASS SWITCH:

The bypass switch completely bypasses the circuit locator. Use this feature when you cannot get the green light to come on and you believe that the two cords are on separate circuits.

CAUTION: If the bypass switch is on and the two cords are plugged into the same circuit, the breaker may blow.

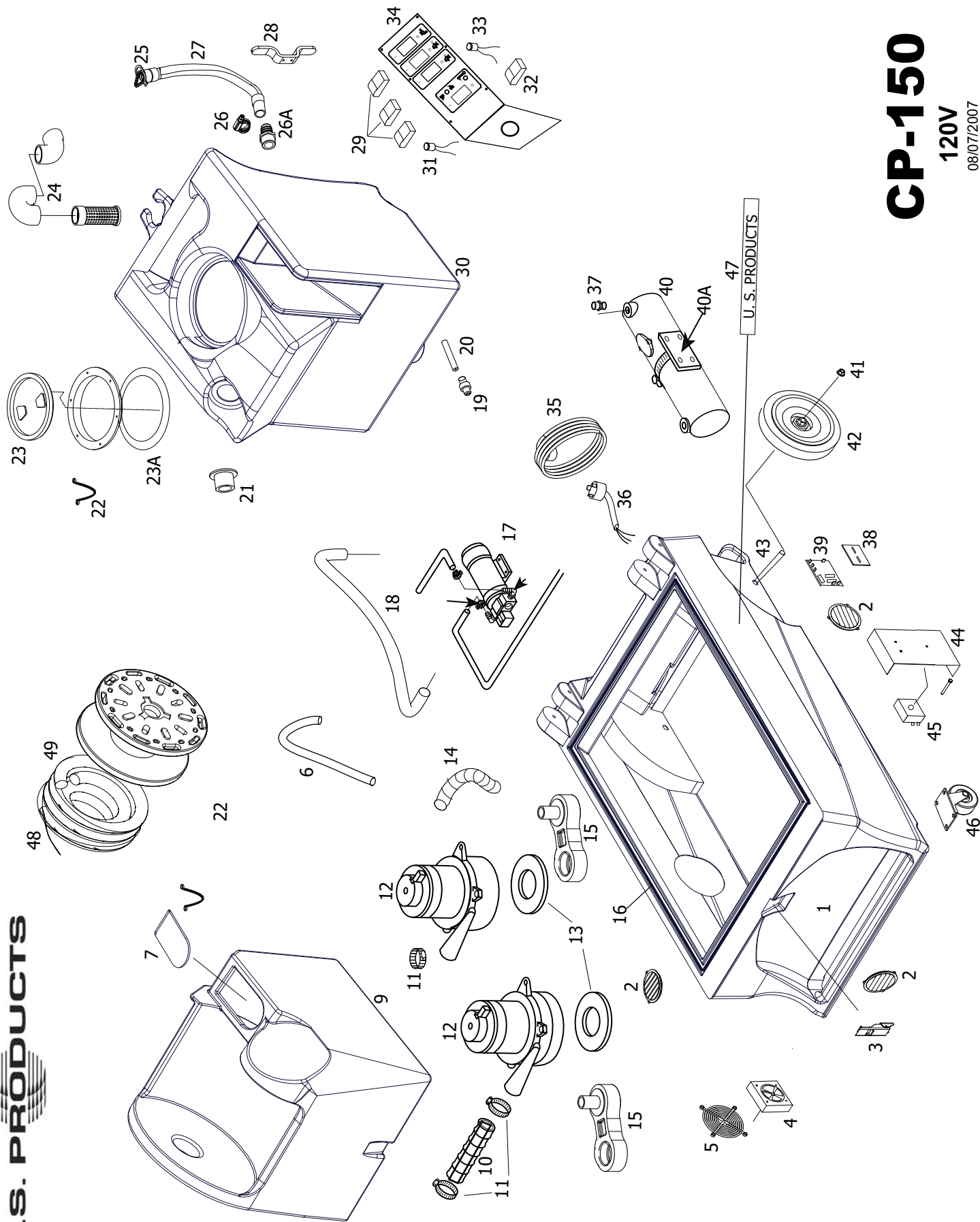
BALL FLOAT VACUUM SHUT-OFF

Prior to using the machine, always check that the float filter is clean and the ball can travel freely. When the recovery tank is full, the ball float will rise and will shut off the vacuum flow to prevent any more water from entering the tank. When this occurs, turn off the vacuum and empty the recovery tank.

NOTE: if foam is present, or if the ball float is prevented from rising, the float will not be able to stop the air flow, and the tank may over fill. Water damage to the vacuum motors is not covered by warranty.



CAUTION: to avoid vacuum motor damage, always use a defoamer any time foam is present.



CP-150

120V
08/07/2007

COBRA PLUS-150

120V

PART LIST

<u>ITEM</u>	<u>PART No.</u>	<u>DESCRIPTION</u>	<u>ITEM</u>	<u>PART No.</u>	<u>DESCRIPTION</u>
1	BKCR-BLK	Base, CP, black,	27	1060B	Hose, dump
2	928	Louver, 3"	28	CWKC-BLK	Cord wrap
3	908A	Latch	29	FP345	Switch, SPST
4	2014	Fan, 100CFM, cooling	30	VKCR-1	Tank, vacuum, white
5	2015	Guard, fan	31	78	Light, green, 120V
6	925	Hose, pump inlet, 1/2" X 20"	32	FP346	Switch, bypass
7	FP446	Lid, solution tank	33	78B	Light, red , 120V
9	HKCR-1	Tank, holding, CP, white	34	1370	Switch plate, CP-150
10	430	Hose, exhaust, 2" X 4"	35	1057B	Cord, power, 12/3, 25 ft.
11	156	Clamp, hose	36	1062	Receptacle, power cord
12	408	Vacuum motor, 2-stage, 120V	37	223	Quick disconnect, male, 1/8 p.t.
13	2013	Gasket, vacuum	38	FP336	Snap track, 4" PCB mounting
14	430	Hose, vacuum, 2" X 8"	39	923B*	Dual cord sensor board
15	MA-2	Manifold, vacuum	40	FP367	Heat exchanger, 120V
16	FP228A	Gasket, #2050 X 87"	40A	455	Bracket, mounting, heater
17	2066	Pump, 150 psi, 120V	41	27A	Axle cap
18	925	Hose, pump to heater, 3/8" X 54"	42	2084	Wheel, 10"
19	45	Quick disconnect, male, 1/4 p.t.	43	910	Axle rod, 18-1/4"
20	92C	Pipe, 6.85", S/S	44	918	Heat sink plate
21	907	Hose barb, vac inlet	45	---	See miscellaneous
22	805	Chain, 8"	46	905	Castor, 4"
23	2086	Lid, 6", vacuum, includes ring	47	1128004	Label, CP-150
23A	1074	Gasket, lid	48	FP443	Pressure line, complete
24	FP364	Ball float & manifold, assy	49	919G	Vacuum hose, complete
25	1060C	Plug, dump hose			
26	156	Clamp, hose			
26A	907	Hose barb/vacuum hose			

MISCELLANEOUS PARTS AND KITS

FP194C	Heat repair kit, includes probe, thermistor control, thermal cutout & circuit board
FP194A	Heat repair kit includes probe, thermistor control & circuit board
*923	PCB, dual circuit sensor board (Machines made before 7-22-05)
FP444	Vacuum hose & pressure line, with reel, complete
FP445	Vacuum hose & pressure line, complete

TROUBLE SHOOTING:

CP-150



ALWAYS UNPLUG THE MACHINE BEFORE DISCONNECTING OR CONNECTING ANY WIRES OR COMPONENTS.

<u>IF THIS OCCURS</u>	<u>CHECK THIS</u>
NO SPRAY	Solution tank is empty. Clogged spray tip. Pump not running. Valve on wand not operating
PUMP DOES NOT RUN	No power to pump. Test the switch. Test the pump motor. Replace if necessary.
LOW SUCTION	Debris plugging cleaning tool or vacuum hose. Drain gate is not completely closed, or seals are damaged. Vacuum lid is not closed or gasket is damaged.
NO SUCTION	No power to motor. Test the switch. Test the vacuum motor.
LOW HEAT	Spraying too long. Try spraying for 12-15 seconds per cycle. Heat exchanger needs to be flushed. Wrong tool being used. Too much water passing through, longer hose or larger diameter hose, than standard
NO HEAT	Heat is not turned on. Either the green light must be on or the bypass switch must be turned on. No power in the wall outlet - check to see if the breaker has tripped. No power to the bypass switch - check wiring for 'opens'. No power out of bypass switch, follow troubleshooting steps to isolate the problem or call your distributor for additional help

SPECIFICATIONS:

Rotomolded Body: Lifetime Warranty
Vacuum: Twin 2-stage 5.7" vacs with vac manifold
VAC Shutoff: Ball float
Pump: Demand pump, 150 psi
Waterlift: 150"
Heat: Instant to 212° F
Heater: 2000 Watts
Wand: Stainless steel, single bend, twin tip
Weight: 101 lbs.
Dimensions: 38" H x 17 3/4" W x 36" L

U.S. PRODUCTS

208-772-0573 • 800-257-7982 • FAX: 208-772-0577

Coeur d'Alene, Idaho

VISIT US AT: <http://www.usproducts.com>