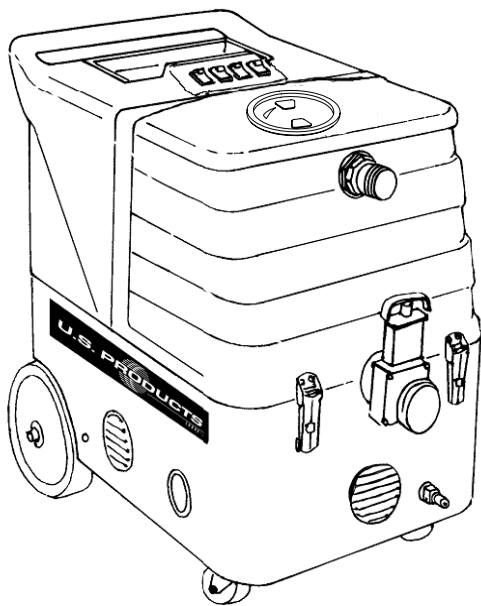




COBRA[®]-H EXTRACTOR 100V



INFORMATION & OPERATING INSTRUCTIONS

**DO NOT OPERATE MACHINE UNTIL YOU HAVE READ
ALL SECTIONS OF THIS INSTRUCTIONS**

IMPROPER USE OF THE MACHINE WILL VOID THE WARRANTY

1. Always use a defoamer when foaming occurs to prevent vacuum motor damage.
2. Keep machine from rain and snow, extremes in temperatures, and store in a heated location. Use the machine indoors. Do not use outdoors.
3. Do not let the pump run dry.
4. Use approved chemicals only. NO SOLVENTS.
5. Wear gloves or use rags when removing quick disconnects to prevent burns.
6. Never use water above 54° C/130° F in the solution tank.

IMPORTANT SAFETY INSTRUCTIONS

This machine is only suitable for commercial use, for example in hotels, schools, hospitals, factories, shops and offices other than normal residential housekeeping purposes.

When using any electrical appliance, basic precautions should always be followed, including the following:

NOTE: Read all instructions before using this machine.

WARNING!

To reduce the risk of fire, electric shock, or injury:

- Do not leave the machine unattended when it is plugged in. Unplug the unit from the outlet when not in use and before servicing.
- To avoid electric shock, do not expose to rain or snow. Store, and use, indoors.
- Do not allow to be used as a toy. Close attention is necessary when used near children.
- Use only as described in this manual. Use only the manufacturer's recommended attachments.
- Never add water over 54° C/130° F to the solution tank.
- Do not use with damaged cord or plug. If the machine is not working as it should, has been dropped, damaged, left outdoors or dropped into water, return it to a service center.
- Do not pull by the cord, use the cord as a handle, close a door on the cord, or pull the cord around sharp edges or corners. Do not run the machine over the cord. Keep the cord away from heated surfaces. To unplug, grasp the plug, not the cord.
- Do not handle the plug, the cord, or the machine with wet hands.
- Extension cords must be 12/3 and no longer than 50 feet. Replace the cord or plug immediately if the ground prong becomes damaged.
- Do not put any object into openings. Do not use with any opening blocked; keep free of dust, lint, hair, and anything that may reduce air flow.
- Keep loose clothing, hair, fingers, and all parts of body away from openings and moving parts.
- Do not pick up anything that is burning or smoking, such as cigarettes, matches, or hot ashes, or any health endangering dusts. Do not use to pick up flammable or combustible liquids such as gasoline or use in areas where they may be present.
- Turn off all controls before unplugging.
- Use extra care when cleaning on stairs.
- Connect to a properly grounded outlet only.
- Liquid ejected at the spray nozzle could be dangerous as a result of its temperature, pressure, or chemical content.

INSPECTION:

Carefully unpack and inspect your COBRA-H for shipping damage. Each machine is tested and inspected before shipping. Any shipping damage incurred is the responsibility of the carrier. You should notify the carrier immediately if you notice damage to the box or to the machine or parts.

CLEANING SOLUTIONS:

We recommend liquid cleaning chemicals, such as our Magic Fabric Cleaner. Powder chemicals may be used, but unless mixed very thoroughly they could cause a build-up in the pump, lines, heat exchanger and/or quick disconnects. Any problem caused by a chemical build-up is not covered by warranty. Use a neutral cleaner with a pH between 6 and 9 to avoid premature wear of the pump, seals, and/or other components. Damage caused by the use of strong chemicals is not covered by the warranty.

MAINTENANCE:

For optimum performance flush the machine with clear water at the end of each working day. Once a month, minimum, run a flushing compound through the machine to break up any mineral or chemical build-up that may have formed. U.S. Products' "X-1500" is recommended. The vacuum motors and the pump do not require any scheduled maintenance; however, the vacuum motors may require replacement brushes after 1000 - 1500 hours. Clean the body with an all purpose detergent, and protect it with an automobile interior polish. Lubricate the wheels, castors, and quick disconnects with an all purpose silicone spray.

RECORD AND KEEP THE FOLLOWING INFORMATION

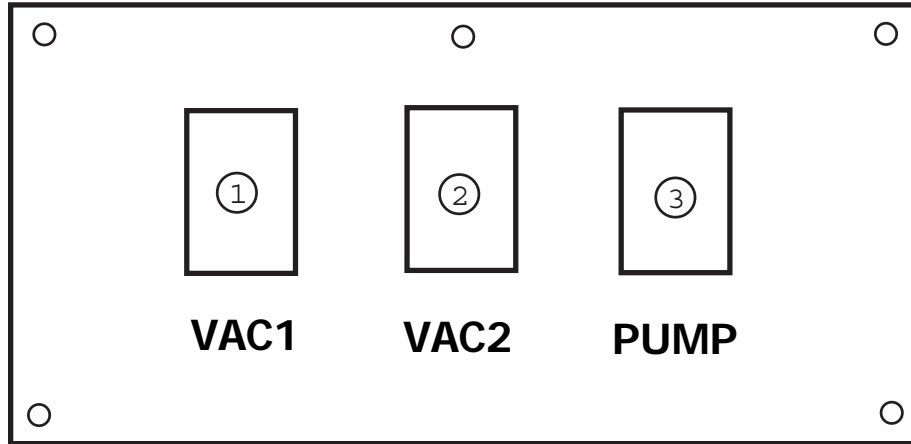
Serial Number: _____

Model: COBRA-H-JP

Purchase Date: _____

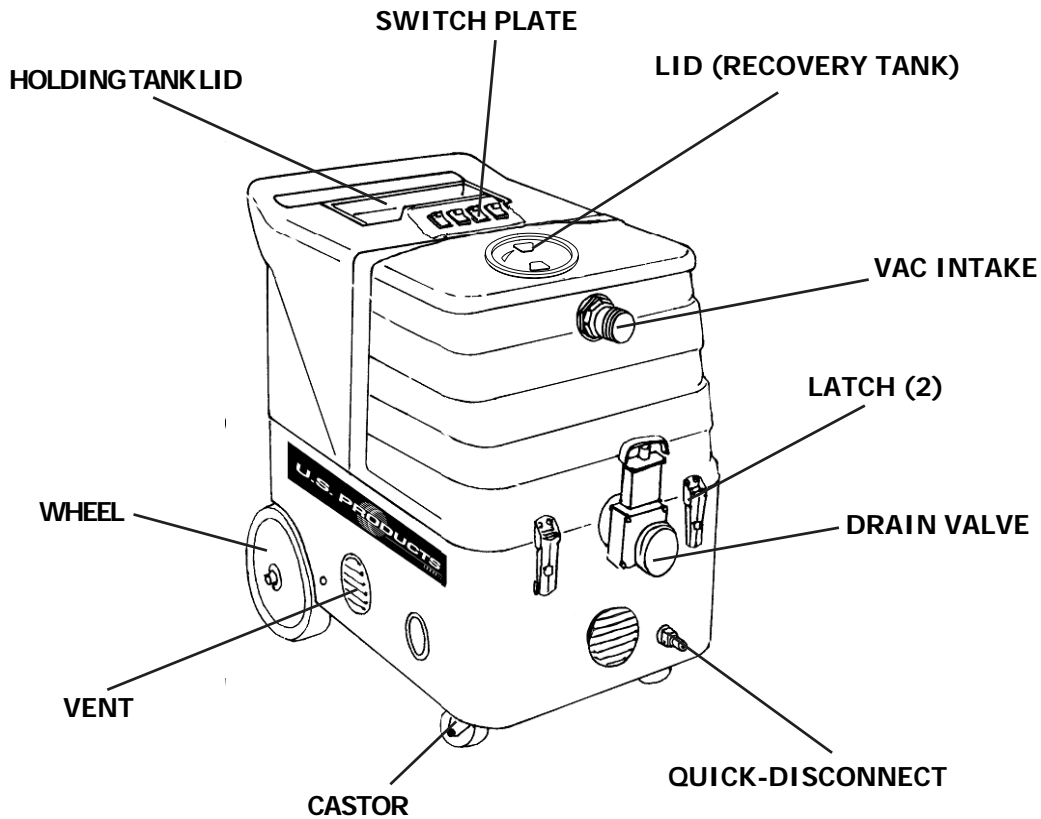
Write the name and phone number of your distributor:

**And don't forget to register your purchase to activate your warranty;
go on-line to www.usproducts.com or complete and return your warranty card**



VACUUM (1), VACUUM (2), AND PUMP (3) SWITCHES:

These switches are all powered by cord #1. Switches are on when illuminated.



SET-UP:

Fill the holding tank with clear water and the detergent of your choice. Mix well. Although this machine is designed to supply instant hot water, the addition of warm or hot water to the holding tank would be a plus factor.

1. Plug in cord #1. This cord runs the pump and vacuums.
2. Turn on the pump and spray through the cleaning tool for a few seconds to fill the lines with solution.
3. Plug in cord #2 (identified by a red "H"). Wait 2 minutes for the heat exchanger to reach operating temperature. You may now begin cleaning. It will take about 10 seconds for the initial heat to reach the wand.
4. Begin cleaning.
5. When the solution tank is empty, turn off the machine. Fill the solution tank with clean water and empty the recovery tank. **CAUTION:** do not use the same bucket to fill the machine with clean water and to empty the dirty water.

BALL FLOAT VAC SHUTOFF:

When the recovery tank is full, the float system will shut off the incoming air flow and prevent water from entering the vacuum motors. The float may not work properly if the float filter is clogged or if there is foam in the tank.

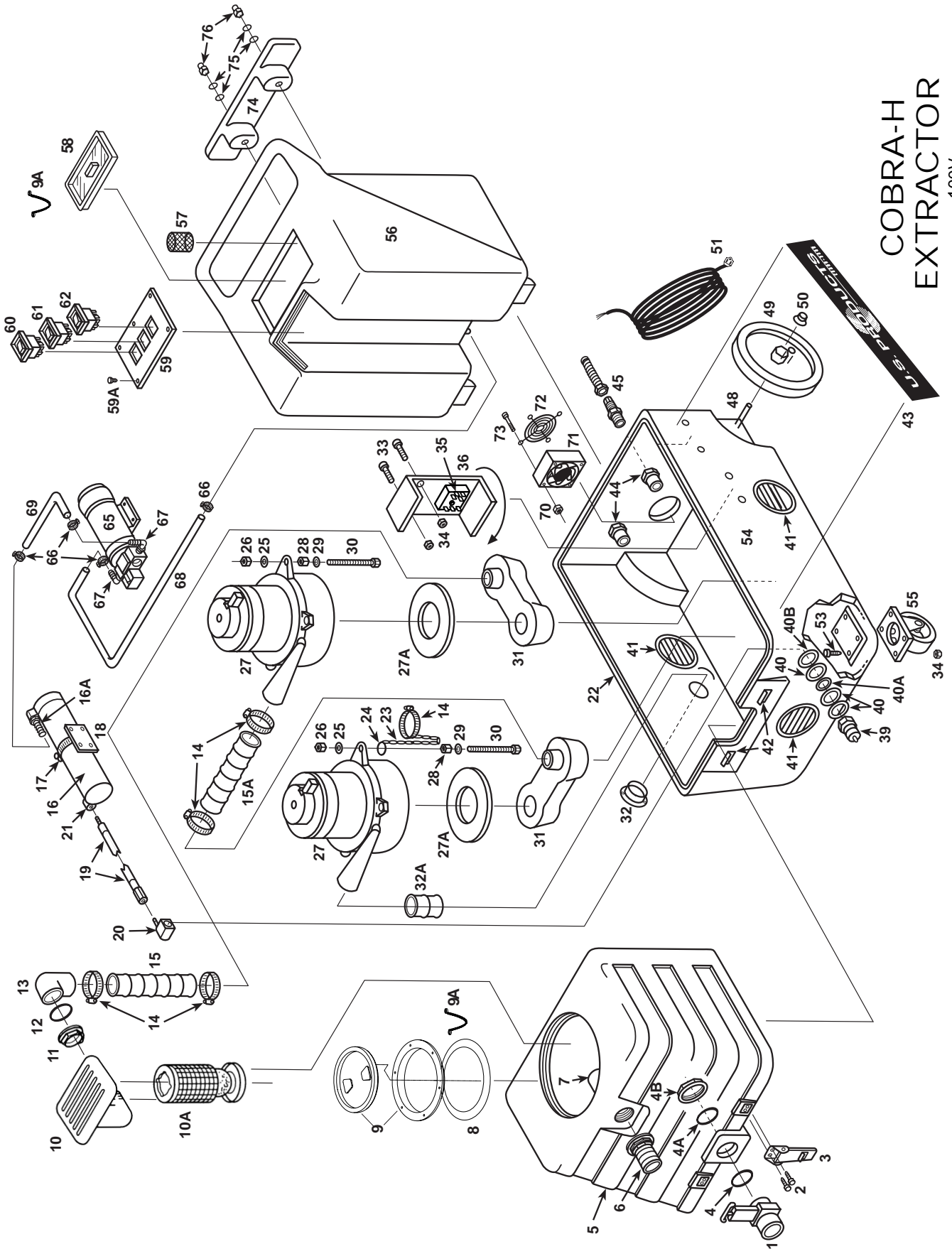


CAUTION:

To avoid vac motor damage, always make sure the float filter is clean and the ball travels freely before turning on the machine, and use a defoamer whenever foam is present.

COBRA-H EXTRACTOR

100V
8-15-07



COBRA-H 100V

PARTS LIST

ITEM No PART No DESCRIPTION

#1	903	Drain Gate (See Misc.)*
#2	21C	Screw, 8-32 X 5/8", S/S
#3	908	Latch
#4	187	O-Ring, Small
#4A	190	O-Ring, Large
#4B	185	Nut 1-1/2"
#5	FP208	Vacuum Tank, Complete
#6	907	Hose Barb, 1-1/2"
#7	922	Elbow, PVC, 1-1/2"
#8	1074	Gasket (machines made after 2-15-05)***
#9	2086	Lid and Ring (machines made after 2-15-05)***
#9A	FP436	Chain and Hardware
#10	FP193	Ball Float Assembly, Complete
#10A	924	Float Ball and Cage
#11	185	Nut, 1-1/2"
#12	190	O-Ring, Large
#13	922	PVC, Elbow, 1-1/2"
#14	156	Hose Clamp (size 28)
#15	FP171	Hose, Vacuum, Rubber 2" X 20"
#15A	FP171C	Hose, Vacuum, Rubber 2" X 16"
#16	FP___	Heat Exchanger, Complete
#16A	208	Hose Barb
#17	76	Hose Clamp
#18	455	Mount, Heat Exchanger
#19	2012	Hose 1/4" X 26", Outlet
#20	91	Elbow, Brass, 90 Degree
#21	103	Elbow, Brass, 90 Degree
#22	FP439	Gasket, Cobra Base
#23	FP233	Chain, 13"
#24	194	Ring Clip
#25	14	Washer, 1/4"
#26	8	Lock Nut, 1/4-20
#27	FP324	Vacuum Motor w/Gasket & Connectors
#27A	2013	Gasket, Vacuum Motor
#28	136	Nut, 1/4-20
#29	137	Washer, Lock, 1/4"
#30	135	Bolt, 1/4-20 X 3-1/2"
#31	MA-6	Manifold, Vacuum
#32	FP220	Flange, Exhaust, w/Hose & Hardware
#32A	430	Hose, 2" x 2"
#33	4	Bolt, 1/4 X 1"
#34	8	Lock Nut ,1/4-20
#35	see Misc	Thermistor Control with Potentiometer**
#36	918	Heat Sink Plate
#39	45	Quick Disconnect, Male, 1/4 p.t.
#40	115	Washer, Fiber
#40A	116	Bushing, Fiber
#40B	31	Washer, Brass
#41	928	Louver, 3" (includes screws)
#42	909A	Latch Strike, for Latch, S/S

ITEM No PART No DESCRIPTION

#43	2001A	Label, Cobra-H
#44	937	Reducer, PVC
#45	184	Cord Retainer
#48	910	Axle, 18-13/16"
#49	2003	Wheel, 8"
#50	27A	Axle Cap, Black
#51	495A	Power Cord, 25', yellow
#53	5	Bolt, 1/4" X 3/4"
#54	BS-6	Base, Cobra, Black
#55	2002	Caster, Swivel, #3"
#56	HT-2	Holding Tank Cobra
#57	207A	Filter, Pump Inlet, 40 Mesh, S/S
#58	901	Lid, Holding Tank
#59	2005	Switch Plate
#59A	28	Screw, #4 X 3/8"
#60	FP311	Switch, Covered (Vacuum)
#61	FP311	Switch, Covered (Vacuum)
#62	FP311	Switch, Covered (Vacuum)
#65	2007	Pump, 100 PSI
#66	166	Hose Clamp
#67	108A	Hose Barb/Elbow
#68	FP165C	Hose, Rubber, 3/8" X 13", Pump Inlet
#69	FP166	Hose, Rubber, 3/8" X 48", Pump Outlet
#70	16	Lock Nut, 6/32
#71	2014	Fan, Cooling
#72	2015	Guard, Fan
#73	2B1	Screw, 6/32 X 2-1/4"
#74	CWBLK	Cord Wrap (Black)
#75	203	Washer, Plastic
#76	260	Nut, Acorn, 3/16"

MISCELLANEOUS ASSEMBLIES/PARTS

*FP231A	Drain Gate Assembly, Complete with O-Rings & Nut.
**FP194A	Thermistor Control Kit with Potentiometer, Probe & Circuit Board
**FP194C	Thermistor Control Kit, with Potentiometer, Probe, Thermal Cutout & Circuit Board
205A	Pump Rebuild Kit (no motor)
***FP201	Dome, Vacuum (Machines made before 2-15-05)
***2009	Gasket for Dome (Machines made before 2-15-05)
***FP2008	Dome & Gasket Complete (Machines made before 2-15-05)

(NOTE: Items in kits not sold separately.) 08-15-07

TROUBLE SHOOTING:

IF THIS OCCURS

CHECK THIS

NO SPRAY	Solution tank is empty. Clogged spray tip. Pump not running. Valve on wand not operating
PUMP DOES NOT RUN	No power to pump. Test the switch. Test the pump motor. Replace if necessary.
LOW SUCTION	Debris plugging cleaning tool or vacuum hose. Drain gate is not completely closed, or seals are damaged. Vacuum lid is not closed or gasket is damaged.
NO SUCTION	No power to motor. Test the switch. Test the vacuum motor.
LOW HEAT	Spraying too long. Try spraying for 12-15 seconds per cycle. Heat exchanger needs to be flushed. Wrong tool being used. Too much water passing through, longer hose or larger diameter hose, than standard
NO HEAT	No power in the wall outlet - check to see if the breaker has tripped. Check wiring for 'opens'.

SPECIFICATIONS:

Rotomolded Body: Lifetime Warranty

Vacuum: Two, 2-stage 5.7"

VAC Shutoff: Ball float

Pump: Demand pump, 100 psi

Waterlift: 150"

Heat: 212° F

Heater: 1500 Watts

Wand: Stainless steel, single bend, twin tip

Weight: 75 lbs.

Dimensions: 25.5H x 18W x 28.75L (inches)

