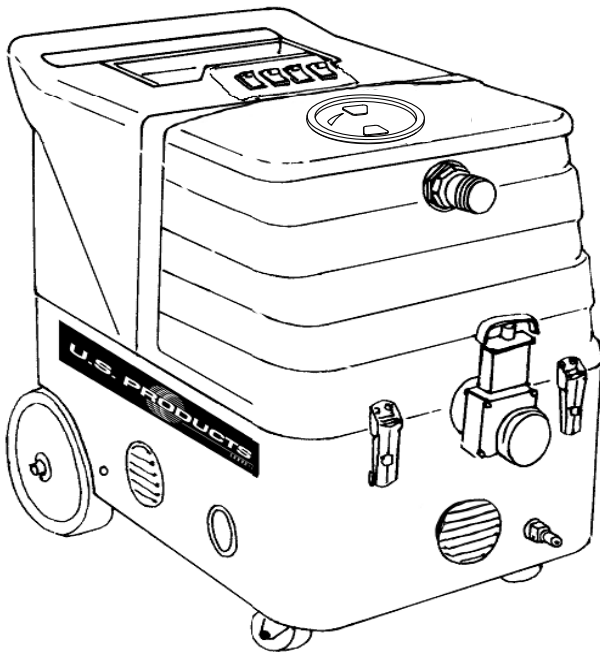




COBRA[®]-300H EXTRACTOR 120V



INFORMATION & OPERATING INSTRUCTIONS

DO NOT OPERATE MACHINE UNTIL YOU HAVE READ

ALL SECTIONS OF THIS INSTRUCTIONS

IMPROPER USE OF THE MACHINE WILL VOID THE WARRANTY

1. Always use a defoamer when foaming occurs to prevent vacuum motor damage.
2. Keep machine from rain and snow, extremes in temperatures, and store in a heated location. Use the machine indoors. Do not use outdoors.
3. Do not let the pump run dry.
4. Use approved chemicals only. NO SOLVENTS.
5. Wear gloves or use rags when removing quick disconnects to prevent burns.
6. Never use water above 130° F/54° C in the solution tank.

IMPORTANT SAFETY INSTRUCTIONS

This machine is only suitable for commercial use, for example in hotels, schools, hospitals, factories, shops and offices other than normal residential housekeeping purposes.

When using any electrical appliance, basic precautions should always be followed, including the following:

NOTE: Read all instructions before using this machine.

WARNING!

To reduce the risk of fire, electric shock, or injury:

- Do not leave the machine unattended when it is plugged in. Unplug the unit from the outlet when not in use and before servicing.
- To avoid electric shock, do not expose to rain or snow. Store, and use, indoors.
- Do not allow to be used as a toy. Close attention is necessary when used near children.
- Use only as described in this manual. Use only the manufacturer's recommended attachments.
- Never add water over 130° F/54° C to the solution tank.
- Do not use with damaged cord or plug. If the machine is not working as it should, has been dropped, damaged, left outdoors or dropped into water, return it to a service center.
- Do not pull by the cord, use the cord as a handle, close a door on the cord, or pull the cord around sharp edges or corners. Do not run the machine over the cord. Keep the cord away from heated surfaces. To unplug, grasp the plug, not the cord.
- Do not handle the plug, the cord, or the machine with wet hands.
- Extension cords must be 12/3 and no longer than 50 feet. Replace the cord or plug immediately if the ground prong becomes damaged.
- Do not put any object into openings. Do not use with any opening blocked; keep free of dust, lint, hair, and anything that may reduce air flow.
- Keep loose clothing, hair, fingers, and all parts of body away from openings and moving parts.
- Do not pick up anything that is burning or smoking, such as cigarettes, matches, or hot ashes, or any health endangering dusts. Do not use to pick up flammable or combustible liquids such as gasoline or use in areas where they may be present.
- Turn off all controls before unplugging.
- Use extra care when cleaning on stairs.
- Connect to a properly grounded outlet only.
- Liquid ejected at the spray nozzle could be dangerous as a result of its temperature, pressure, or chemical content.

INSPECTION:

Carefully unpack and inspect your COBRA-300H for shipping damage. Each machine is tested and inspected before shipping. Any shipping damage incurred is the responsibility of the carrier. You should notify the carrier immediately if you notice damage to the box or to the machine or parts.

CLEANING SOLUTIONS:

We recommend liquid cleaning chemicals, such as our Magic Fabric Cleaner. Powder chemicals may be used, but unless mixed very thoroughly they could cause a build-up in the pump, lines, heat exchanger and/or quick disconnects. Any problem caused by a chemical build-up is not covered by warranty. Use a neutral cleaner with a pH between 6 and 9 to avoid premature wear of the pump, seals, and/or other components. Damage caused by the use of strong chemicals is not covered by the warranty.

MAINTENANCE:

For optimum performance flush the machine with clear water at the end of each working day. Once a month, minimum, run a flushing compound through the machine to break up any mineral or chemical build-up that may have formed. U.S. Products' "X-1500" is recommended. The vacuum motor, pump motor, and the pump do not require any scheduled maintenance; however, the motors may require replacement brushes after 1000 - 1500 hours, and the pump and bypass valve may require rebuild kits after 1000 - 1500 hours, typically (refer to machine part list for numbers) Clean the body with an all purpose detergent, and protect it with an automobile interior polish. Lubricate the wheels, castors, and quick disconnects with an all purpose silicone spray.

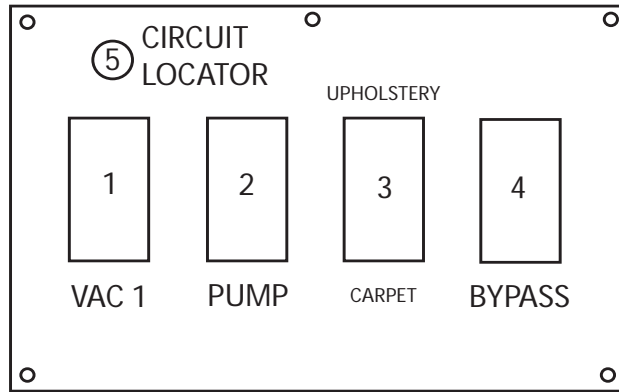
(and be sure to mail your warranty card)

Serial Number: _____

Model: COBRA-300H

Purchase Date: _____

Write the name and phone number of your distributor:



VACUUM (1), PUMP (2) SWITCHES:

These switches are powered by cord #1. Switches are on when illuminated.

CARPET/UPHOLSTERY SWITCH (3):

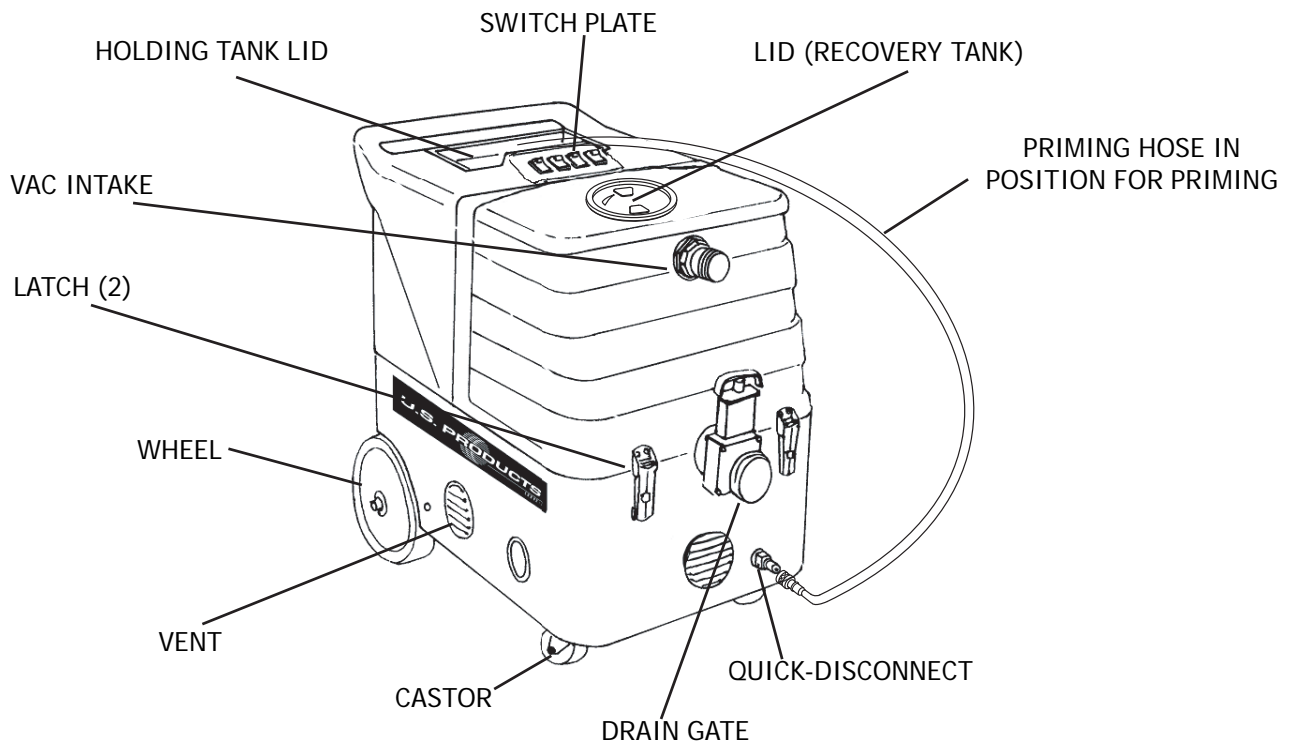
This switch is also powered by cord #1. The carpet setting (down position) is high pressure (approximately 300 PSI). The upholstery setting (up position) is low pressure (approximately 50 PSI with a K1 or V2 spray tip).

BYPASS SWITCH (4):

The bypass switch will illuminate when it is turned on, and it will completely bypass the circuit locator system. Use this feature only when the circuit locator light will not operate and you know each cord is on a separate circuit, otherwise a circuit breaker may trip.

CIRCUIT LOCATOR (5):

When this light is on, it indicates that cord #2 (identified by the red "H") is on a separate line from cord #1. Cord #2 supplies voltage to the heater.



SET-UP:

Fill the holding tank with clear water and the detergent of your choice. Mix well. Although this machine is designed to supply instant hot water, the addition of warm (not exceeding 130° F/54° C) to the holding tank would efficiency of the heater.

1. Plug in cord #1. Attach the priming hose to the machine (see illustration on previous page). Turn the pump on and set the switch to the upholstery setting. Run until the pump is fully primed, then turn off the pump. Remove the priming hose, and attach the cleaning hoses and tool.
2. Turn on the pump, and spray through the cleaning tool for a few seconds to fill the lines with solution.
3. Plug in cord #2 (identified by a red "H" on the back of the extractor). IF THE GREEN LIGHT ILLUMINATES, THE HEAT EXCHANGER WILL TURN ON AUTOMATICALLY (SEE NOTE BELOW). Wait 2 minutes for the heat exchanger to reach operating temperature. You may now begin cleaning. It will take about 10 seconds for the initial heat to reach the wand.

NOTE: If the green circuit indicator light does not illuminate when cord #2 is plugged in, then both cords are on the same circuit. Try other outlets until the light comes on. See bypass switch section (below) if you are unable to get a green light.

ELECTRIC CIRCUIT LOCATOR:

This unique, patented "smart system", operated by a solid state circuit, will inform the operator when the two cords are plugged into separate lines by illuminating the green indicator light. This helps prevent tripping circuit breakers

BYPASS SWITCH:

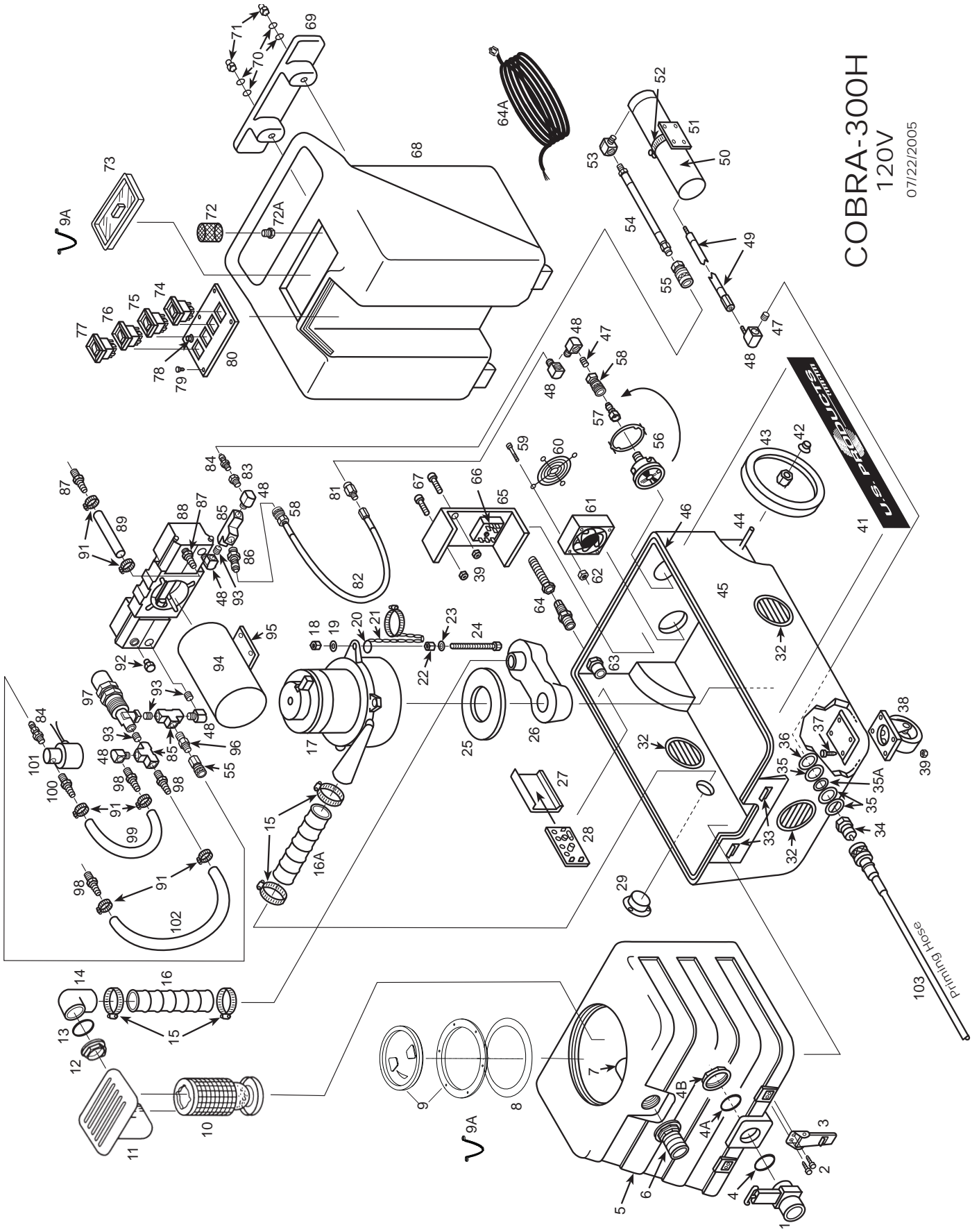
The bypass switch completely bypasses the circuit locator system. Use this feature when you cannot get the green light to come on and you believe that the two cords are on separate circuits.

CAUTION: If the bypass switch is on and the two cords are plugged into the same circuit, the circuit breaker may blow.

BALL FLOAT VAC SHUTOFF:

When the recovery tank is full, the float system will shut off the incoming air flow and prevent water from entering the vacuum motors. The float may not work properly if the float filter is clogged or if there is foam in the tank.

CAUTION: To avoid vac motor damage, always make sure the float filter is clean and the ball travels freely before turning on the machine, and use a defoamer whenever foam is present.



COBRA-300H
120V

07/22/2005

Priming Hose
103

COBRA-300H 120V

PARTS LIST

ITEM # PART # DESCRIPTION	ITEM # PART # DESCRIPTION
#1 903 Drain Gate (see Misc.)*	#64A 495A Power Cord, 25', Yellow
#2 21 Screw, Button Head, 10/32 X 5/8"	#65 918 Heat Sink Plate
#3 908 Latch	#66 (see Misc.) Thermistor Control with Potentiometer **
#4 187 O-Ring, Small	#67 4 Bolt, 1/4-20 x 1"
#4A 190 O-Ring, Large	#68 HT-2 Holding Tank
#4B 185 Nut, 1-1/2"	#69 CWBLK Cord Wrap, Black
#5 FP208 Vacuum Tank, Complete, Cobra	#70 203 Washer, Plastic
#6 907 Hose Barb, 1-1/2"	#71 260 Nut, Acorn, 3/16"
#7 922 PVC Elbow, 1-1/2"	#72 207A Filter, Pump Inlet, 40 Mesh, S/S
#8 1074 Gasket (Machines made after 2-15-05)***	#72A 92B Nipple, PVC, 1/2 N.P.T.
#9 2086 Lid and Ring (Machines made after 2-15-05)***	#73 901 Lid, Holding Tank
#9A FP436 Chain and Hardware	#74 FP312 Switch, Bypass
#10 924 Float, Ball & Cage	#75 FP311 Switch, Carpet/Upholstery
#11 FP193 Ball Float Assembly, Complete	#76 FP311 Switch, Pump
#12 185 Nut, 1-1/2"	#77 FP311 Switch, Vacuum
#13 190 O-Ring, Large	#78 78 Light, Green (small)
#14 922 PVC Elbow, 1-1/2"	#79 28 Screw, #4 x 3/8"
#15 156 Hose Clamp, (size 28)	#80 2005E Switch plate
#16 FP171 Hose, Vacuum, Rubber, 2" x 20"	#81 210 Snubber, Pressure
#16A FP171D Hose, Vacuum, Rubber, 2" x 19"	#82 944 Hose, Pulsation Dampening, 28"
#17 FP323 Vacuum Motor, 3-stage, w/Connectors	#83 97 Bushing, Brass
#18 7 Nut, jam, 5/16"	#84 223 Quick Disconnect, Male, 1/8" Pipe Thread
#19 15 Washer, flat	#85 168 "T", Brass
#20 194 Split Ring	#86 221 Quick Disconnect, Male, Open, 1/4 p.t.
#21 FP233 Chain, 13"	#87 165 Hose Barb
#22 320AB Nut, Finish, 5/16"	#88 950 Pump, Raw, See Misc.
#23 34 Washer, Split lock	#89 FP170A Hose, Pump Inlet, 1/2" X 16"
#24 179 Bolt, 5/16 x 4"	#91 166 Hose Clamp
#25 959 Gasket, Vacuum Motor	#92 211 Plug, Brass
#26 MA-6 Manifold, Vacuum	#93 92A Nipple, 1/4 p.t., S/S
#27 931 Mounting Track, Circuit Board	#94 2060 Motor, for Pump (120V)
#28 923B Circuit Board, Dual Cord Sensor****	#95 2061 Mount Plate, Pump Motor
#29 FP220 Flange, Exhaust, w/Hose & Hardware	#96 105 Reducer Nipple, Brass
#32 928 Louver, 3" (includes screws)	#97 FP238 Bypass Valve, Complete for Cobra-300H
#33 909A Latch Strike, for Latch, S/S	#98 164 Hose Barb
#34 45 Quick Disconnect, 1/4 n.p.t.	#99 FP169E Hose, 3/8" X 8"
#35 115 Washer, Fiber	#100 208 Hose Barb, Brass 1/8 p.t. x 3/8 hose
#35A 116 Bushing, Fiber	#101 2062 Solenoid (without fittings)
#36 31 Washer, Brass	FP230 Solenoid (with fittings)
#37 5 Bolt, 1/4-20 x 3/4"	#102 FP169C Hose, Pump Bypass, 3/8" X 18"
#38 2002 Castor, Swivel, 3"	#103 SYP1 Priming Hose Assy
#39 8 Lock Nut, 1/4-20	
#41 2001B Label	
#42 27A Axle Cap, Black	
#43 2003 Wheel, 8"	
#44 910 Axle, 18-13/16"	
#45 BS-6 Base, Cobra, Black	
#46 FP439 Gasket, Cobra Base	
#47 92A Nipple, S/S, 1/4 p.t.	
#48 91 Elbow, Brass	
#49 2023A Hose Assembly, Heater Outlet, 29-1/2"	
#50 FP159D Heat Exchanger, Complete	
#51 455 Mount, Heat Exchanger	
#52 76 Hose Clamp	
#53 103 Elbow, 1/8 f.p.t. x 1/8 m.p.t.	
#54 224 Hose Assembly, 8"	
#55 222 Quick Disconnect, Female, Open, 1/8 p.t.	
#56 951 Pressure Gauge, 2-1/2"	
#57 219 Quick Disconnect, Male, 1/4 p.t.	
#58 222 Quick Disconnect, Female, Open, 1/8 p.t.	
#59 2B1 Screw, 6/32 x 2-1/4"	
#60 2015 Guard, Fan	
#61 2014 Fan, Cooling	
#62 16 Locknut, 6/32"	
#63 937 Reducer, PVC	
#64 184 Cord Retainer	
	<u>MISCELLANEOUS ASSEMBLIES/PARTS</u>
	*FP231 Drain Gate Assembly, Complete (with o-rings & nut)
	FP167F Pump Complete (NO motor, solenoid, or hoses)
	FP212B Pump & Motor Complete (NO solenoid, mount bracket, mount bracket or hoses)
	950 Cam/Bearing Assembly
	291 Bypass Valve Rebuild Kit
	229 Valve/O-Ring Kit, for 300 PSI pump
	250 Piston/Seal Kit, for 300 PSI pump
	**FP194A Thermistor Control Kit with Potentiometer & Probe & Circuit Board
	**FP194C Thermistor Control Kit with Potentiometer, Probe & Thermal Cutout & Circuit Board
	***FP201 Dome, Vacuum (Machines made before 2-15-05)
	***2009 Gasket for Dome (Machines made before 2-15-05)
	***FP2008 Dome & Gasket Complete (Machines made before 2-15-05)
	****923 Circuit Board, Dual Cord Sensor (Machines made before 7-21-05)
	(NOTE: Items in kits not sold separately.)

TROUBLE SHOOTING:

<u>IF THIS OCCURS</u>	<u>CHECK THIS</u>
NO SPRAY	Solution tank is empty. Clogged spray tip. Pump not running. Valve on wand not operating.
PUMP DOESN'T RUN	No power to pump. Test the switch. Test the motor directly to AC power.
LOW SUCTION	Debris plugging cleaning tool or vacuum hose. Drain gate is not completely closed, or seals are damaged. Vacuum lid is not closed tight.
NO SUCTION	No power to motor. Test the switch. Test the vacuum motor.
LOW HEAT	Spraying too long. Try spraying for 12-15 seconds per cycle. Heat exchanger needs to be flushed. Wrong tool being used. Too much water passing through, (longer hose, larger diameter hose, or larger spray tip), than standard.
NO HEAT	Heat is not turned on. Either the green light must be on or the bypass switch must be turned on. No power in the wall outlet - check to see if the breaker has tripped. No power to the bypass switch - check power cord for 'opens'. No power out of bypass switch, follow troubleshooting steps to isolate the problem. Call your distributor for additional help.

SPECIFICATIONS:

Rotomolded Body: Lifetime Warranty

Vacuum: One, 3-stage, 7.2"

VAC Shutoff: Ball float

Pump: Positive displacement, 300 psi carpet, 75 psi upholstery

Waterlift: 140"

Heat: 212° F

Heater: 2000 Watts

Wand: Stainless steel, double bend, twin tip

Weight: 99 lbs.

Dimensions: 26.5H x 18W x 28.75L (inches)



208-772-0573 • 800-257-7982 • FAX: 208-772-0577

Coeur d'Alene, Idaho

VISIT US AT: <http://www.usproducts.com>