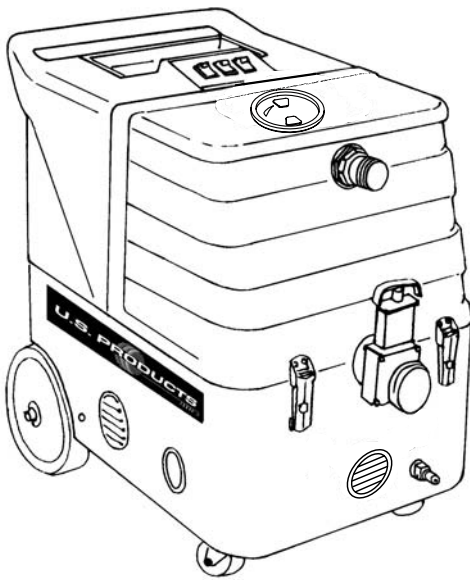




COBRA-300H EXTRACTOR 240V



INFORMATION & OPERATING INSTRUCTIONS

**DO NOT OPERATE MACHINE UNTIL YOU HAVE READ
ALL SECTIONS OF THIS INSTRUCTIONS**

IMPROPER USE OF THE MACHINE WILL VOID THE WARRANTY

1. Always use a defoamer when foaming occurs to prevent vacuum motor damage.
2. Keep machine from rain and snow, extremes in temperatures, and store in a heated location. Use the machine indoors. Do not use outdoors.
3. Do not let the pump run dry.
4. Use approved chemicals only. NO SOLVENTS.
5. Wear gloves or use rags when removing quick disconnects to prevent burns.
6. Never use water above 130° F/54° C in the solution tank.

IMPORTANT SAFETY INSTRUCTIONS

This machine is only suitable for commercial use, for example in hotels, schools, hospitals, factories, shops and offices other than normal residential housekeeping purposes.

When using any electrical appliance, basic precautions should always be followed, including the following:

NOTE: Read all instructions before using this machine.

WARNING!

To reduce the risk of fire, electric shock, or injury:

- Do not leave the machine unattended when it is plugged in. Unplug the unit from the outlet when not in use and before servicing.
- To avoid electric shock, do not expose to rain or snow. Store, and use, indoors.
- Do not allow to be used as a toy. Close attention is necessary when used near children.
- Use only as described in this manual. Use only the manufacturer's recommended attachments.
- Never add water over 130° F/54° C to the solution tank.
- Do not use with damaged cord or plug. If the machine is not working as it should, has been dropped, damaged, left outdoors or dropped into water, return it to a service center.
- Do not pull by the cord, use the cord as a handle, close a door on the cord, or pull the cord around sharp edges or corners. Do not run the machine over the cord. Keep the cord away from heated surfaces. To unplug, grasp the plug, not the cord.
- Do not handle the plug, the cord, or the machine with wet hands.
- Extension cords must be 14/3 and no longer than 50 feet. Replace the cord or plug immediately if the ground prong becomes damaged.
- Do not put any object into openings. Do not use with any opening blocked; keep free of dust, lint, hair, and anything that may reduce air flow.
- Keep loose clothing, hair, fingers, and all parts of body away from openings and moving parts.
- Do not pick up anything that is burning or smoking, such as cigarettes, matches, or hot ashes, or any health endangering dusts. Do not use to pick up flammable or combustible liquids such as gasoline or use in areas where they may be present.
- Turn off all controls before unplugging.
- Use extra care when cleaning on stairs.
- Connect to a properly grounded outlet only.
- Liquid ejected at the spray nozzle could be dangerous as a result of its temperature, pressure, or chemical content.

INSPECTION:

Carefully unpack and inspect your COBRA-300H-240 for shipping damage. Each machine is tested and inspected before shipping. Any shipping damage incurred is the responsibility of the carrier. You should notify the carrier immediately if you notice damage to the box or to the machine or parts.

CLEANING SOLUTIONS:

We recommend liquid cleaning chemicals, such as our Magic Fabric Cleaner. Powder chemicals may be used, but unless mixed very thoroughly they could cause a build-up in the pump, lines, heat exchanger and/or quick disconnects. Any problem caused by a chemical build-up is not covered by warranty. Use a neutral cleaner with a pH between 6 and 9 to avoid premature wear of the pump, seals, and/or other components. Damage caused by the use of strong chemicals is not covered by the warranty.

MAINTENANCE:

For optimum performance flush the machine with clear water at the end of each working day. Once a month, minimum, run a flushing compound through the machine to break up any mineral or chemical build-up that may have formed. U.S. Products' "X-1500" is recommended. The vacuum motor, pump motor, and the pump do not require any scheduled maintenance; however, the motors may require replacement brushes after 1000 - 1500 hours, and the pump and bypass valve may require rebuild kits after 1000 - 1500 hours, typically (refer to machine part list for numbers) Clean the body with an all purpose detergent, and protect it with an automobile interior polish. Lubricate the wheels, castors, and quick disconnects with an all purpose silicone spray.

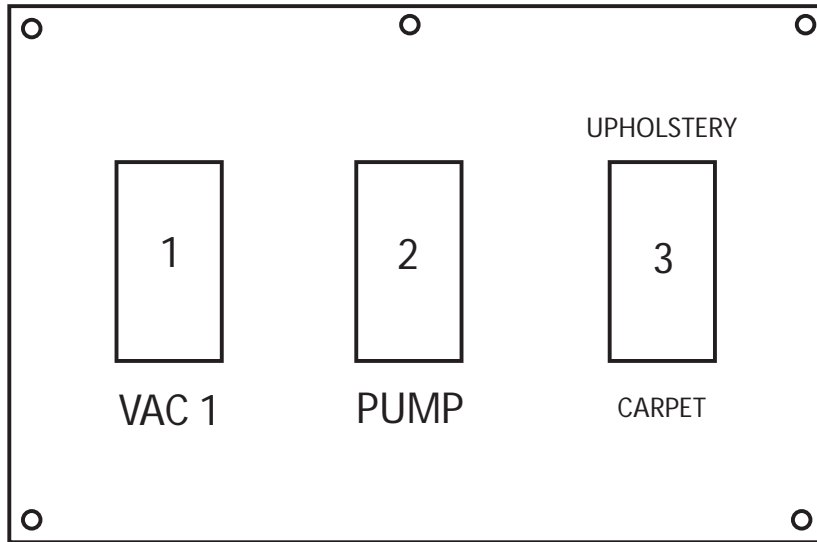
(and be sure to mail your warranty card)

Serial Number: _____

Model: COBRA-300H-240

Purchase Date: _____

Write the name and phone number of your distributor:

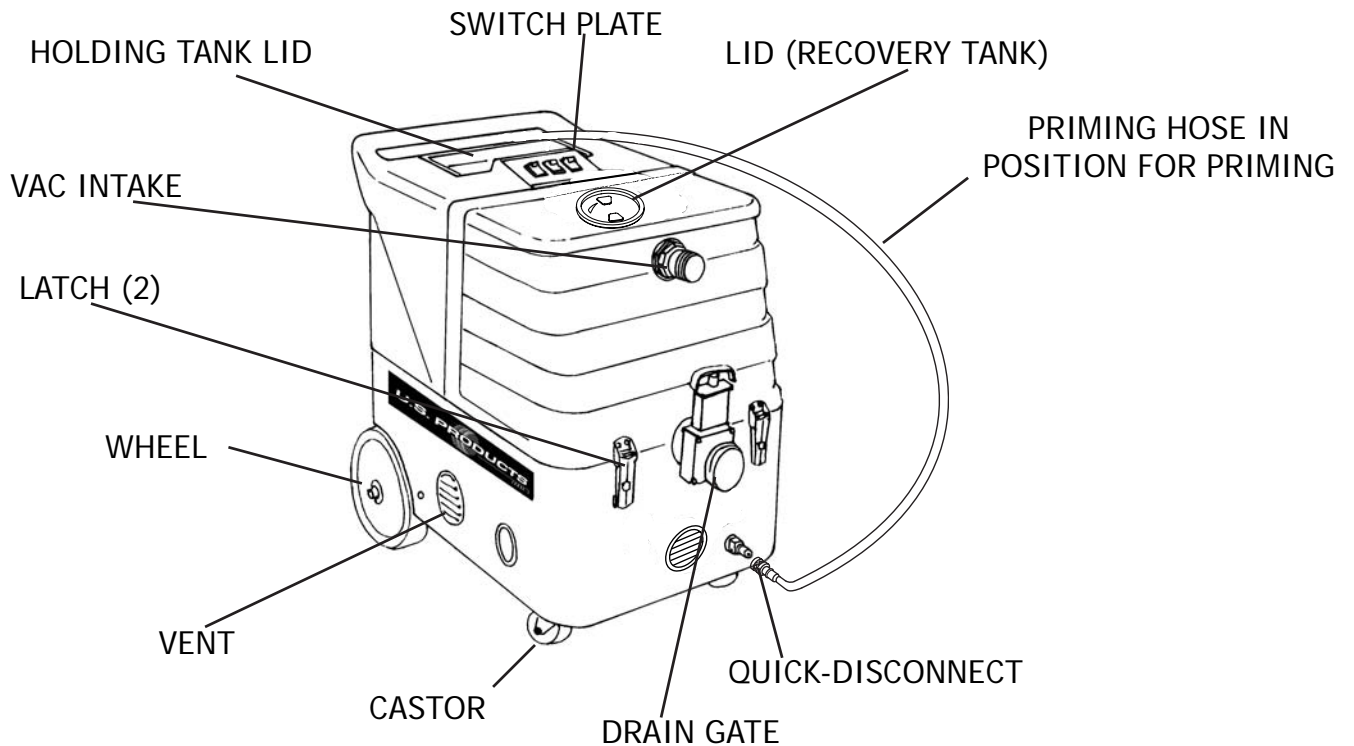


VACUUM (1) PUMP (2) SWITCHES:

These switches are powered by cord #1. Switches are on when illuminated.

CARPET/UPHOLSTERY SWITCH (3):

This switch is also powered by cord #1. The carpet setting (down position) is high pressure (approximately 300 PSI). The upholstery setting (up position) is low pressure (approximately 50 PSI with a K1 or V2 spray tip).



SET-UP:

Fill the holding tank with clear water and the detergent of your choice. Mix well. Although this machine is designed to supply instant hot water, the addition of warm (not exceeding 130° F/54° C) to the holding tank would efficiency of the heater.

1. Plug in cord #1. Attach the priming hose to the machine (see illustration on previous page). Turn the pump on and set the switch to the upholstery setting. Run until the pump is fully primed, then turn off the pump. Remove the priming hose, and attach the cleaning hoses and tool.
2. Turn on the pump, and spray through the cleaning tool for a few seconds to fill the lines with solution.
3. Plug in cord #2 (identified by a red "H" on the back of the extractor). Wait 2 minutes for the heat exchanger to reach operating temperature.
4. Turn on the vacuum.
5. You may now begin cleaning. It will take about 10 seconds for the initial heat to reach the wand.

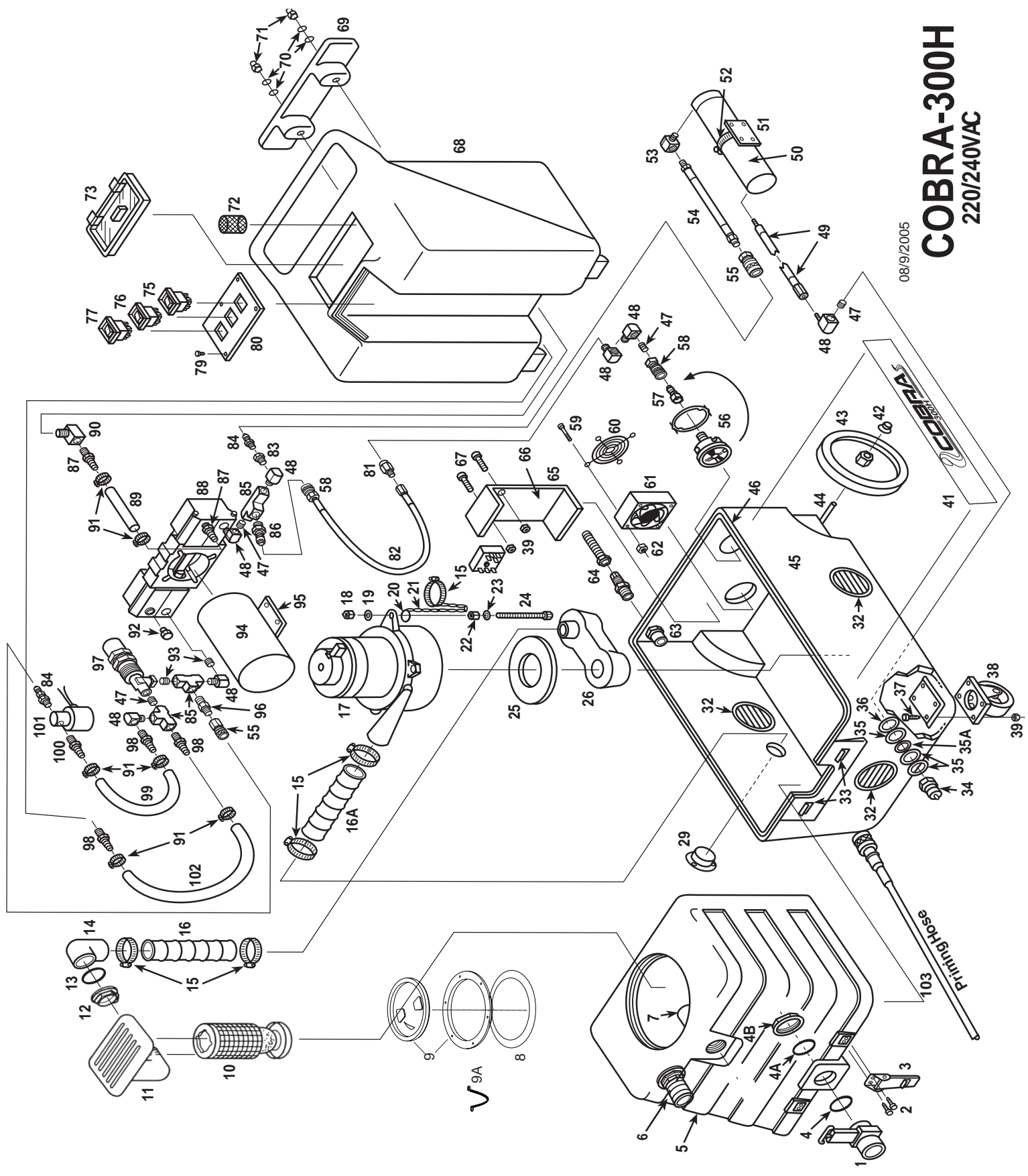
BALL FLOAT VAC SHUTOFF:

When the recovery tank is full, the float system will shut off the incoming air flow and prevent water from entering the vacuum motors. The float may not work properly if the float filter is clogged or if there is foam in the tank.

CAUTION: To avoid vac motor damage, always make sure the float filter is clean and the ball travels freely before turning on the machine, and use a defoamer whenever foam is present.

COBRA-300H 220/240VAC

08/9/2005



COBRA-300H 240V

PARTS LIST

<u>ITEM #</u>	<u>PART #</u>	<u>DESCRIPTION</u>	<u>ITEM #</u>	<u>PART #</u>	<u>DESCRIPTION</u>
#1	903	Drain Gate (see Misc.)*	#66	see Misc.	Thermistor Control with Potentiometer**
#2	21	Screw, Button Head, 10/32 x 5/8"	#67	4	Bolt, 1/4-20 x 1"
#3	908	Latch	#68	HT-2	Holding Tank
#4	187	O-Ring, Small	#69	CWBLK	Cord Wrap, Black
#4A	190	O-Ring, Large	#70	203	Washer, Plastic
#4B	185	Nut, 1-1/2"	#71	260	Nut, Acorn, 3/16"
#5	FP208	Vacuum Tank, Complete, Cobra	#72	207A	Filter, Pump Inlet, 40 Mesh, S/S
#6	907	Hose Barb, 1-1/2"	#73	901	Lid, Holding Tank
#7	922	PVC Elbow, 1-1/2"	#75	48G	Switch, Carpet/Upholstery
#8	1074	Gasket (Machines made after 2-15-05)****	#76	48G	Switch, Pump
#9	2086	Lid & Ring (Machines made after 2-15-05)****	#77	48G	Switch, Vacuum
#9A	FP436	Chain and Hardware	#79	28	Screw, #4 x 3/8"
#10	924A	Float, Ball & Cage w/manifold	#80	2006D	Switch Plate, 240V
#11	FP193	Ball Float Assembly, Complete	#81	210	Snubber, Pressure
#12	185	Nut, 1-1/2"	#82	944	Hose, Pulsation Dampening, 28"
#13	190	O-Ring, Large	#83	97	Bushing, Brass
#14	922	PVC Elbow, 1-1/2"	#84	223	Quick Disconnect, Male, 1/8, p.t.
#15	156	Hose Clamp, (size 28)	#85	168	"T", Brass
#16	FP171	Hose, Vacuum, Rubber, 2" x 20"	#86	221	Quick Disconnect, Male, Open, 1/4 p.t.
#16A	FP171D	Hose, Vacuum, Rubber, 2" x 19"	#87	165	Hose Barb
#17	FP385	Vacuum Motor, 3-Stage, w/Connectors (240V)	#88	950	Pump, Raw, see Misc.***
#18	7	Nut, Jam, 5/16"	#89	FP170A	Hose, Pump Inlet, 1/2" x 16"
#19	15	Washer, Flat, 5/16"	#91	166	Hose Clamp
#20	194	Split Ring	#92	211	Plug, Brass
#21	FP233	Chain, 13"	#93	92A	Nipple, 1/4 p.t., S/S
#22	320AB	Nut, Finish, 5/16"	#94	2064	Motor, for Pump, 1/3 HP
#23	34	Washer, Split Lock	#95	2061	Mount Plate, Pump Motor
#24	179	Bolt, 5/16 x 4"	#96	105	Reducer Nipple, Brass
#25	2013	Gasket, Vacuum Motor	#97	FP238	Bypass Valve, Complete
#26	MA-6	Manifold, Vacuum	#98	164	Hose Barb
#29	FP220	Flange, Exhaust	#99	FP169E	Hose, 3/8" x 8"
#32	928	Louver, 3" (includes screws)	#100	208	Hose Barb, Brass 1/8 p.t. x 3/8 Hose
#33	909A	Strike Latch, for Latch, S/S	#101	2063	Solenoid, (without fittings)
#34	45	Quick Disconnect, 1/4 n.p.t.		FP230A	Solenoid, (with fittings)
#35	115	Washer, fiber	#102	FP169C	Hose, Pump Bypass 3/8" x 18"
#35A	116	Bushing, fiber	#103	SYP1	Priming Hose
#36	31	Washer, Brass			
#37	5	Bolt, 1/4-20 x 3/4"			
#38	2002	Castor, Swivel, 3"			
#39	8	Lock Nut, 1/4-20			
#40	180	Axle Bracket			
#41	2001B	Label			
#42	27A	Axle Cap, Black			
#43	2003	Wheel, 8"			
#44	910	Axle, 18-13/16"			
#45	BS-6	Base, Cobra, Black			
#46	FP439	Gasket, Cobra, Base			
#47	92A	Nipple, S/S, 1/4 p.t.			
#48	91	Elbow, Brass			
#49	2023A	Hose Assembly, Heater Outlet, 29-1/2"			
#50	FP159F	Heat Exchanger, Complete (240V)			
#51	455	Mount, Heat Exchanger			
#52	76A	Hose Clamp			
#53	103	Elbow, 1/8 f.p.t. x 1/8 m.p.t.			
#54	224	Hose Assembly, 8"			
#55	222	Quick Disconnect, Female, Open 1/8 p.t.			
#56	951	Pressure Gauge, 2-1/2"			
#57	219	Quick Disconnect, Male, 1/4 p.t.			
#58	222	Quick Disconnect, female, 1/8 f.p.t.			
#59	2B1	Screw, 6/32 x 2-1/4"			
#60	2015	Guard, Fan			
#61	2018	Fan, Cooling (240V)			
#62	16	Lock Nut, 6/32"			
#63	937	Reducer, PVC			
#64	184	Cord Retainer			
#64A	2019	Power Cord, Yellow, 25'			
#65	918	Heat Sink Plate			

MISCELLANEOUS ASSEMBLIES/PARTS

*FP231A	Drain Gate Assembly with Nut and O-Rings
***FP167F	Pump Complete (no motor or bearing)
***FP212C	Pump & Motor Complete (no solenoid, mount bracket or hoses) (240V)
950A	Cam/Bearing Assembly
291	Bypass Valve Rebuild Kit
229	Valves/O-Ring Kit, Pump
250	Piston/Seal Kit, Pump
**FP226A	Thermistor Control Kit with Potentiometer, Probe, pre-calibrated (240V)
**FP226C	Thermistor Control Kit w/ Potentiometer & Probe & Thermal Cutout Assembly pre-calibrated (240V)
****FP201	Dome (Machines made before 2-15-05)
****2009	Gasket for Dome (Machines made before 2-15-05)
***FP2008	Dome & Gasket Complete (Machines made before 2-15-05)

(NOTE: Items in kits not sold separately.)

8/8/07

TROUBLE SHOOTING:

<u>IF THIS OCCURS</u>	<u>CHECK THIS</u>
NO SPRAY	Solution tank is empty. Clogged spray tip. Pump not running. Valve on wand not operating.
PUMP DOES NOT RUN	No power to pump. Test the switch. Test the motor directly to AC power.
LOW SUCTION	Debris plugging cleaning tool or vacuum hose. Drain gate is not completely closed, or seals are damaged. Vacuum lid is not closed tight.
NO SUCTION	No power to motor. Test the switch. Test the vacuum motor.
LOW HEAT	Spraying too long. Try spraying for 12-15 seconds per cycle. Heat exchanger needs to be flushed. Wrong tool being used. Too much water passing through, (longer hose, larger diameter hose, or larger spray tip), than standard.
NO HEAT	Heat is not turned on. No power in the wall outlet - check to see if the breaker has tripped. Call your distributor for additional help.

SPECIFICATIONS:

Rotomolded Body: Lifetime Warranty

Vacuum: One, 3-stage, 7.2"

VAC Shutoff: Ball float

Pump: Positive displacement, 300 psi carpet, 75 psi upholstery

Waterlift: 140"

Heat: 212° F

Heater: 2000 Watts

Wand: Stainless steel, double bend, twin tip

Weight: 99 lbs.

Dimensions: 26.5H x 18W x 28.75L (inches)



208-772-0573 • 800-257-7982 • FAX: 208-772-0577

Coeur d'Alene, Idaho

VISIT US AT: <http://www.usproducts.com>