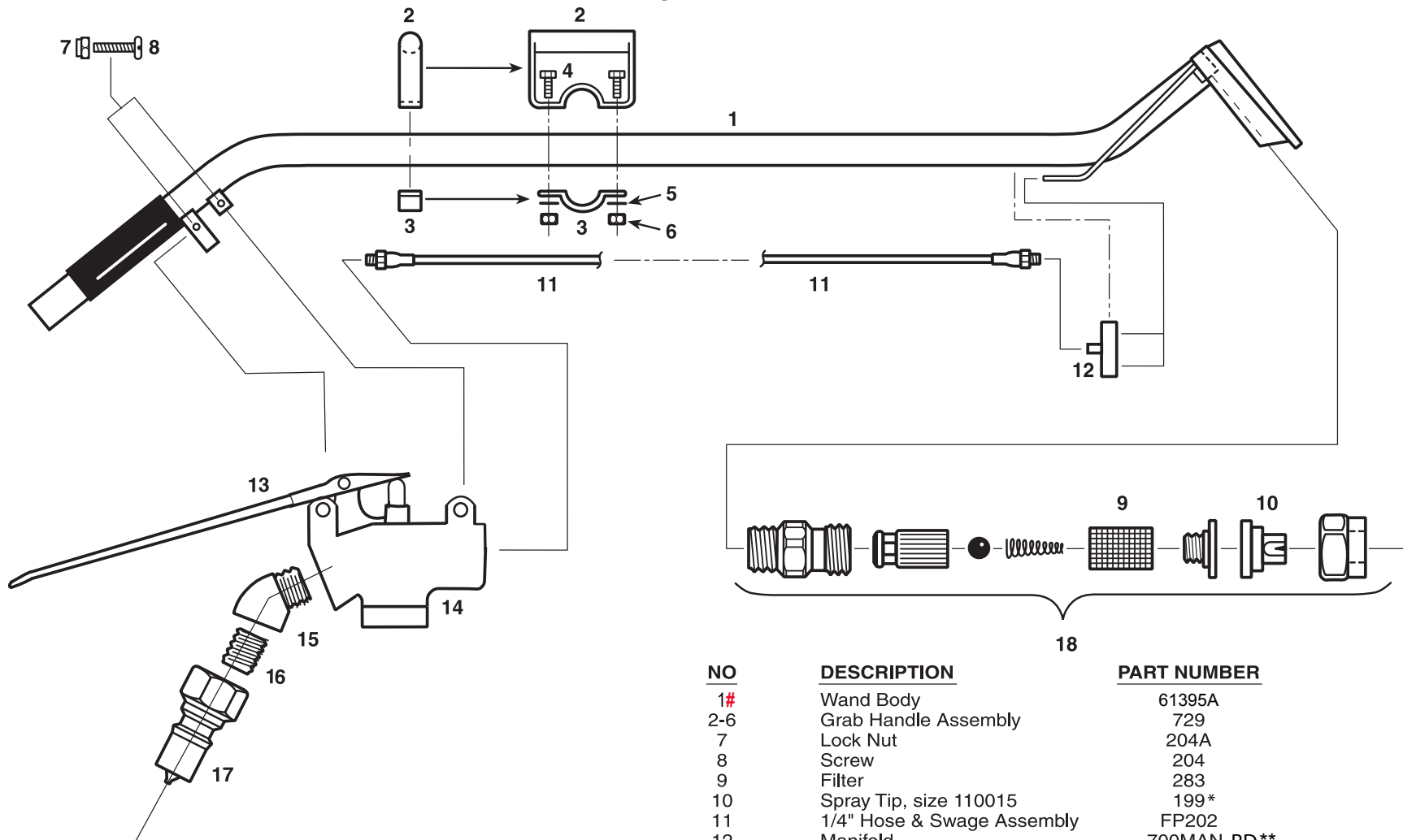


CSW-12HP DUAL TIP



NO	DESCRIPTION	PART NUMBER
1#	Wand Body	61395A
2-6	Grab Handle Assembly	729
7	Lock Nut	204A
8	Screw	204
9	Filter	283
10	Spray Tip, size 110015	199*
11	1/4" Hose & Swage Assembly	FP202
12	Manifold	700MAN-RD**
13	Valve Lever - part of valve	
14	Valve, 1150 PSI	85K
15	Brass Elbow, 45 Degrees, 1/4pt	140
16	Brass Nipple, 1/4pt	92
17	Brass Quick-Disconnect, plug, 1/4pt	45
18	Spray Tip Assembly	292
	Valve Rebuild Kit	85J

* if the wand is being used with less than 300 psi, use spray tip #199A

** Manifold that requires compression nuts on small tubing for tips #00700MAN

= Revised or new since last update.

NOTE: This tool is suitable only for use with water or chemical with a pH between 5 and 10.

REV F 10.29.2010

Form No. 56042546