

# **SERVPRO®**

## **MODEL 873**

### **EXTRACTOR**

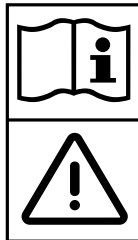
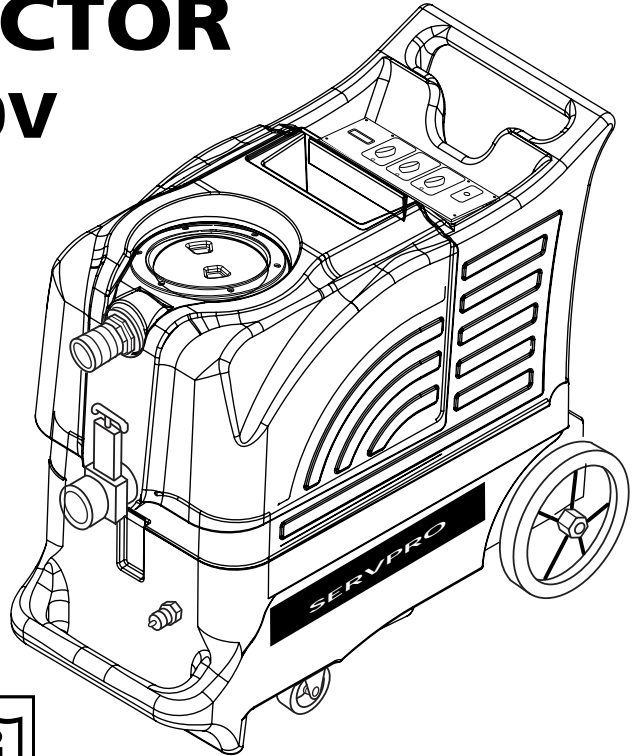
#### **120V**

## **INFORMATION**

**&**

## **OPERATING**

## **INSTRUCTIONS**



**CAUTION: DO NOT OPERATE MACHINE UNTIL YOU HAVE READ ALL SECTIONS OF THIS INSTRUCTION MANUAL**



#### **IMPROPER USE OF THE MACHINE WILL VOID THE WARRANTY**

1. Always use a defoamer when foaming occurs to prevent vacuum motor damage.
2. Connect the machine to a properly grounded outlet, only.
3. Keep machine from rain and snow, extremes in temperatures, and store in a heated location. Use the machine indoors. Do not use outdoors.
4. Use approved chemicals only. NO SOLVENTS.
5. Wear gloves or use rags when removing quick disconnects to prevent burns.
6. Never use water above 130 °F/54 °C in the solution tank.

## IMPORTANT SAFETY INSTRUCTIONS

This machine is only suitable for commercial use, for example in hotels, schools, hospitals, factories, shops and offices other than normal residential housekeeping purposes.

When using any electrical appliance, basic precautions should always be followed, including the following:

**NOTE:** Read all instructions before using this machine.



### To reduce the risk of fire, electric shock, or injury:

- Do not leave the machine unattended when it is plugged in. Unplug the unit from the outlet when not in use and before servicing.
- Never turn on the solution pump without first connecting your solution hose to your machine and to your tool.
- Never add water over 130° F/54° C to the solution tank.
- Never use chemicals or water with a pH below 5 or above 10 in the machine.
- Extension cords must be 12/3 and no longer than 50 feet. Replace the cord or unplug immediately if the ground prong becomes damaged.
- To avoid electric shock, do not expose to rain or snow. Use and store indoors.
- Do not allow to be used as a toy. Close attention is necessary when used near children.
- Use only as described in this manual. Use only the manufacturer's recommended attachments.
- Do not use with damaged cord or plug. If the machine is not working as it should, has been dropped, damaged, left outdoors or dropped into water, return it to a service center.
- Do not pull by the cord, use the cord as a handle, close a door on the cord, or pull the cord around sharp edges or corners. Do not run the machine over the cord. Keep the cord away from heated surfaces. To unplug, grasp the plug, not the cord.
- Do not handle the plug, the cord, or the machine with wet hands.

Do not put any object into openings. Do not use with any opening blocked; keep free of dust, lint, hair, and anything that may reduce air flow.

- Keep loose clothing, hair, fingers, and all parts of body away from openings and moving parts.
- Do not pick up anything that is burning or smoking, such as cigarettes, matches, hot ashes, or any health endangering dusts. Do not use to pick up flammable or combustible liquids such as gasoline or use in areas where these liquids may be present.
- Turn off all controls before unplugging.
- Use extra care when cleaning on stairs.
- Connect to a properly grounded outlet only.
- Liquid ejected at the spray nozzle could be dangerous as a result of its temperature, pressure, or chemical content.

## INSPECTION:

Carefully unpack and inspect your Model #873 Extractor for shipping damage. Each machine is tested and inspected before shipping. Any shipping damage incurred is the responsibility of the carrier. You should notify the carrier immediately if you notice damage to the box or to the machine or parts.

## CLEANING SOLUTIONS:

We recommend liquid cleaning chemicals. Powder chemicals may be used, but unless mixed very thoroughly they could cause a build-up in the pump, lines, heat exchanger and/or quick disconnects. Any problem caused by a chemical build-up is not covered by warranty. Use a neutral cleaner with a pH between 5 and 10 to avoid premature wear of the pump, seals, and/or other components.



**DANGER: DO NOT USE SOLVENTS, OR ANY CHEMICALS THAT MAY BE FLAMMABLE, EXPLOSIVE OR COMBUSTIBLE.**



## MAINTENANCE:

For optimum performance flush the machine with clear water at the end of each working day. Once a month, minimum, run a flushing compound through the machine to break up any mineral or chemical build-up that may have formed. The vacuum motor and the pump do not require any scheduled maintenance; however, the motor may require replacement brushes after 1000 - 1500 hours. Clean the body with an all-purpose detergent, and protect it with an automobile interior polish. Lubricate the wheels, castors, and quick disconnects with an all purpose silicone spray.

## PARTS AND SERVICE:

Repairs, when required, should be performed by your authorized Servpro distributor who maintains an inventory of original replacement parts and accessories. Call the distributor from whom you purchased this machine if you need parts and service. Be sure to specify the machine model. Have your serial number handy.

**Serial Number:** \_\_\_\_\_

**Model: #873** \_\_\_\_\_

**Purchase Date:** \_\_\_\_\_

**Write the name and phone number of your distributor:**

---

---

## SWITCH PLATE

### MODEL (1):

This identifies the model of your Advantage machine.

### VACUUM SWITCH (2):

This push-button switch turns on the vacuum. The switch will illuminate when it is on.

### PUMP SWITCH (3):

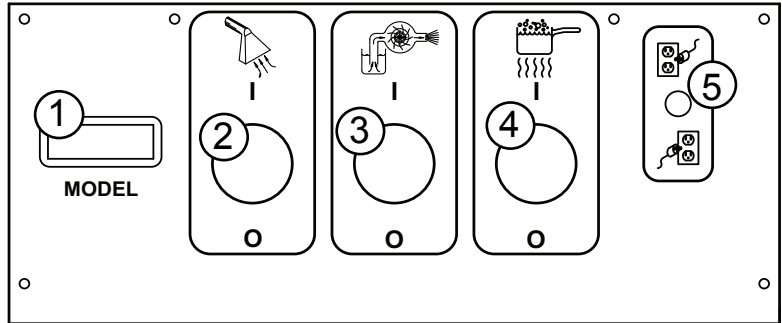
The pump switch will illuminate when it is activated, and it will turn on the pump.

### HEAT SWITCH (4):

The heat switch will illuminate when it is activated and will turn on the heater. **NOTE:** if the green, two-circuit indicator light is not turned on, you may have both power cords on the same circuit and this can trip the circuit breaker in the wall.

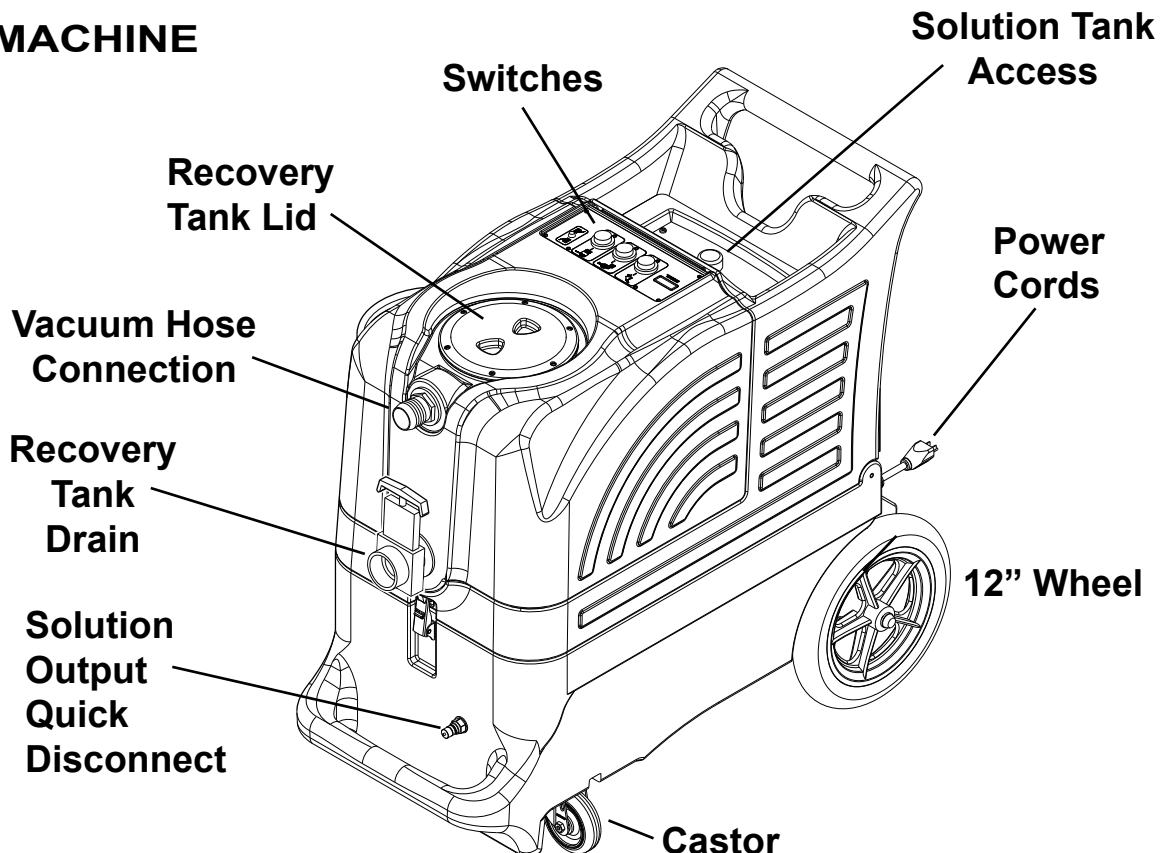
### GREEN, TWO CIRCUIT INDICATOR (5):

This light will automatically turn on when you have plugged the two power cords into separate circuits. If this light does not turn on, try other outlets with one of the cords until the light does turn on. **NOTE:** all systems in the machine will operate if this light does not turn on, but you may trip a circuit breaker in the wall.



---

## YOUR MACHINE



## SET-UP & OPERATION:

1. Inspect the machine, hoses, and cleaning tools for cleanliness and completeness.
2. Screw on the lid to the Recovery tank. Close the drain gate.
3. Fill the holding tank with clear water.

**NOTE:** although this machine is designed to supply instant hot water, the addition of warm water to the solution tank would increase heater efficiency. Never use water above 130 °F/54 °C in the solution tank.

4. Turn off all the switches. Plug the power cords into properly grounded outlets. Do not connect both cords to the same outlet; the green, circuit locator light (5) on the switch plate should light up. If the locator light does not come on, try different outlets with one of the power cords until it does.
5. Connect the priming hose to the machine, and position the open end of the hose over the solution tank. Turn the pump ON (3) to prime the air out of the pump. When the water is clear (no air in it) turn the pump off, and remove the priming hose. **NOTE:** if priming is difficult, place the open end of the priming hose into the Vacuum inlet hose barb, and turn the vacuum on. Use your hand to block the open area in the hose barb. This will allow the pump and the vacuum to work together to get the water moving. Priming may take 20 - 60 seconds, and the solution tank should be full.

Once the pump has been primed, turn off the motor(s) and then remove priming hose.

6. Attach the spray hose to the solution quick disconnect and the vacuum hose to the hose barb on the recovery tank. Attach the other ends of the hoses to the cleaning tool.
7. Turn on the Heat switch (4), and wait two minutes for the heat exchanger to reach temperature.
8. Pre-spray with the detergent of your choice. If you choose to add a detergent to the solution tank, be sure to mix well, and always follow the use & dilution instructions on the chemical label. Use a chemical with a pH between 5 and 10.
9. Turn on the vacuum (2).
10. Turn on the pump and begin cleaning.
11. Use defoamer any time foaming occurs to prevent damage to the motor or other components.  
**NOTE:** foam will not lift the ball float.
12. Monitor the water level in the solution tank. Do not let the pump run dry.
13. When the solution tank gets low, turn off the pump and the vacuum, fill the solution tank, empty and clean the recovery tank.
14. When finished with the job, remove any unused solution from the solution tank, and run a few gallons of clean water through the system. Drain the recovery tank by opening the drain gate over a drain or a bucket. Disconnect the hoses from the cleaning tool.

**NOTE:** if the green, circuit locator light does not illuminate when the cords are plugged in, then both cords are on the same circuit. Try other outlets with one of the cords until you get the locator light to come on.

**NOTE:** if the heat switch is turned on when both cords are on the same circuit, the breaker in the wall may trip.

### AUTO VACUUM SHUTOFF:

When the recovery tank is full, the ball float will shut-off the suction to prevent the machine from overflowing.

**NOTE:** the float may not work if there is foam in the tank. Always use defoamer to prevent overflow.

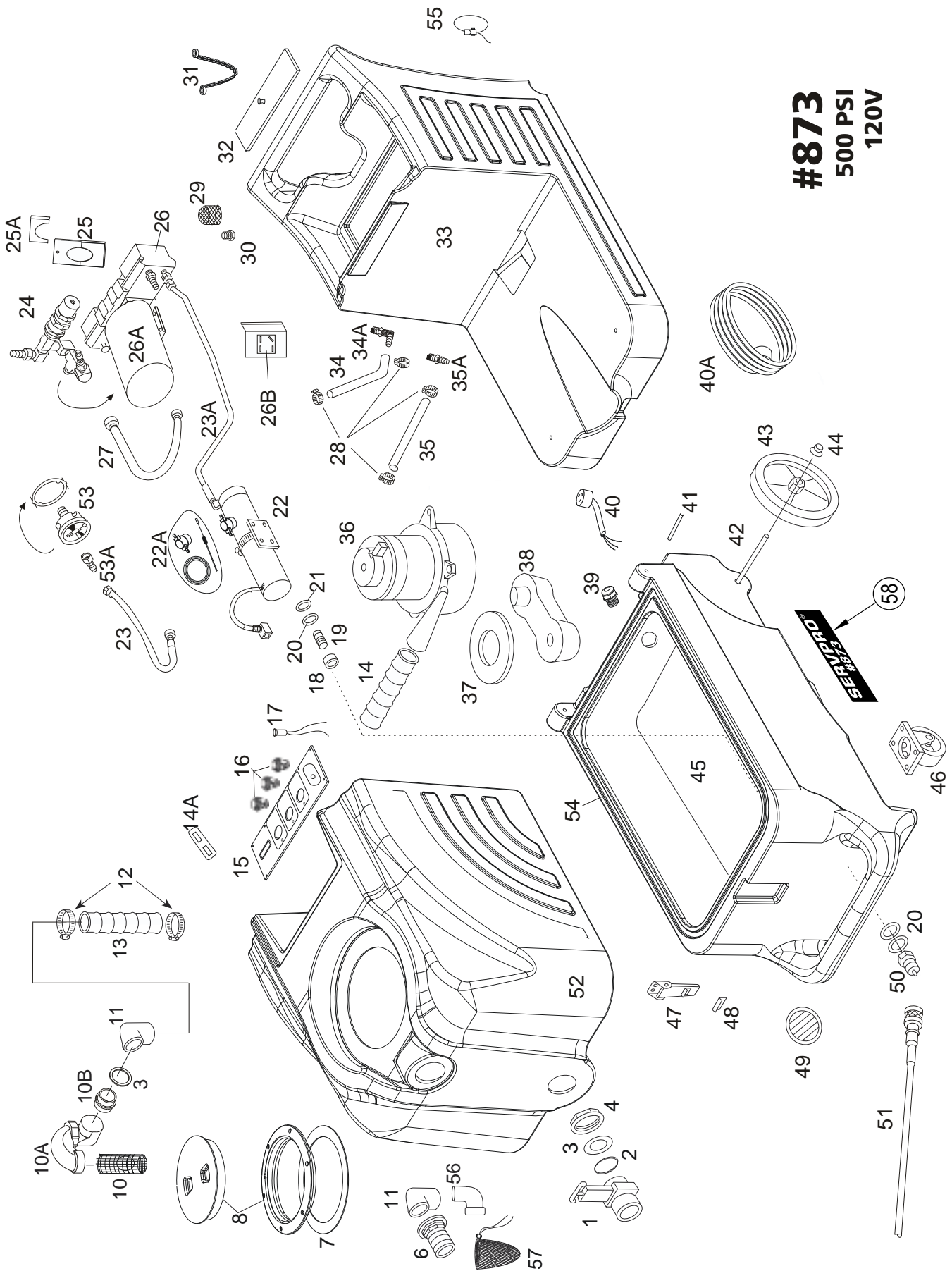


**CAUTION: Use care when handling hazardous chemicals.**

**Never leave the machine running when you are not actively using it.**

**Always use a defoamer in the recovery tank to prevent water or foam from entering the vacuum motor.**

**Always make sure the float cage is clean and the ball can travel freely before turning on the machine.**



**#873**  
**500 PSI**  
**120V**

# Model 873

| Item | Ref. No. | Qty | Description                        | Item | Ref. No. | Qty | Description                        |
|------|----------|-----|------------------------------------|------|----------|-----|------------------------------------|
| 1#   | 903USP   | 1   | Drain Gate                         | 33#  | TKC-11   | 1   | Solution tank, green               |
| 2#   | 187USP   | 1   | O-ring                             | 34   | 946      | 17" | Hose, pump inlet, 1/2" ID X 17"    |
| 3    | 187B     | 2   | Gasket                             | 34A  | 1112     | 1   | Elbow/Hose Barb, for 1/2" ID X 15" |
| 4#   | 185USP   | 1   | Nut, 1-1/2"                        | 35   | 925      | 18" | Hose, pump bypass, 3/8" ID X 18"   |
| 6    | 907      | 1   | Hose Barb, vacuum inlet            | 35A  | 1083     | 1   | Hose barb, for 3/8" hose           |
| 7    | 1074     | 1   | Gasket                             | 36   | 408G     | 1   | Vacuum, 3-stage                    |
| 8    | 2086A    | 1   | Lid with Ring, 6"                  | 37   | 2013     | 1   | Gasket, vacuum                     |
| 10   | 929B     | 1   | Ball Float, vac shut-off           | 38   | MA-6     | 1   | Manifold, vacuum                   |
| 10A  | 1154A    | 1   | Adapter, ABS trap                  | 39#  | 230USP   | 2   | Retainer, cord pigtail             |
| 10B  | 1154     | 1   | Adapter, ABS                       | 40#  | 2155     | 2   | Pigtail, power cord                |
| 11#  | 922USP   | 2   | Elbow, PVC, FPT                    | 40A# | 2154     | 2   | Power cord, 25 ft                  |
| 12#  | 156USP   | 2   | Hose Clamp                         | 41   | 801      | 2   | Hinge pin                          |
| 13   | 430      | 27" | Hose, vacuum, 2"ID X 27"           | 42#  | 910-1863 | 1   | Axle Rod (18.63" long)             |
| 14   | 430A     | 1   | Hose, vacuum, 2"ID X 14.5"         | 43   | 2092     | 2   | Wheel, 12 inch                     |
| 14A  | 4404C    | 1   | Bar, vacuum hose hold-down         | 44#  | 27AUSP   | 2   | Axle cap                           |
| 15   | 2167     | 1   | Switch Plate                       | 45#  | BMPE-3   | 1   | Base-Green                         |
| [#]  | 2167-2C  | 1   | Overlay                            | 46#  | 905USP   | 2   | Castor                             |
| 16#  | 1623R    | 3   | Switch, push-button, ON/OFF        | 47#  | 56471194 | 1   | Latch                              |
| 17#  | 227      | 1   | Green light                        | 48   | 909A     | 1   | Catch, for latch                   |
| 18   | 116A     | 1   | Bushing, fiber, heat resistant     | 49#  | 459USP   | 1   | Louver, 2-1/2"                     |
| 19#  | 92AUSP   | 1   | Nipple, 1/4 mpt, S/S               | 50#  | 45USP    | 1   | Quick disconnect                   |
| 20#  | 115USP   | 3   | Washer, fiber, heat resistant      | 51   | SYP1     | 1   | Priming hose                       |
| 21   | 31       | 1   | Washer, brass                      | 52   | VT-35    | 1   | Recovery tank, green               |
| 22#  | FP610    | 1   | Heat Exchanger                     | 53   | 2165     | 1   | Pressure gauge                     |
| 22A  | FP256    | 1   | Heat Repair kit                    | 53A# | 219USP   | 1   | Quick disconnect                   |
| 23   | 1284     | 1   | Hose, pulsation dampening          | 54   | FP228A   | 84" | Gasket                             |
| 23A# | 1581A    | 1   | Hose, pump to heater               | 55   | 1603     | 2   | Strap, cord wrap                   |
| 24#  | 945D     | 1   | Pressure regulator valve, unloader | 56   | 1140     | 1   | Elbow                              |
| 25   | 1554     | 1   | Mount, pressure reg.               | 57   | FP619    | 1   | Pre-filter bag with cord lock      |
| 25A  | 1555     | 1   | Clamp, pressure regulator to mount | 58#  | 2194     | 2   | Label Servpro 873 8.0 X 2.         |
| 26#  | FP652    | 1   | Pump, complete, 500 psi            | [#]  | 4325C    | 1   | Label, Heat Designation Power      |
| 26A# | FP653    | 1   | Motor, pump drive                  | [#]  | 4339     | 2   | Label Caution / Extension Cord     |
| 26B  | 1579     | 1   | Bridge rectifier, for pump motor   |      |          |     |                                    |
| 27   | 1506     | 1   | Hose assembly, 21"                 |      |          |     |                                    |
| 28#  | 166USP   | 4   | Hose clamp                         |      |          |     |                                    |
| 29   | 207A     | 1   | Filter, pump inlet                 |      |          |     |                                    |
| 30#  | 92BUSP   | 1   | Nipple                             |      |          |     |                                    |
| 31#  | 805USP   | 1   | Chain, 8"                          |      |          |     |                                    |
| 32   | 2175     | 1   | Lid, Solution tank                 |      |          |     |                                    |

## MISCELLANEOUS PARTS

|     |        |   |                                     |
|-----|--------|---|-------------------------------------|
| [ ] | FP508  | 1 | Pump and motor, complete            |
| [ ] | 950CP  | 1 | Pump rebuild kit, valves & o-rings  |
| [#] | 250USP | 1 | Pump rebuild kit, plunger and seals |
| [ ] | 950D   | 1 | Cam/bearing                         |

[ ] = Not Shown

# = Revised or new since last update

# MODEL 873

## TROUBLE SHOOTING:

| <b><u>IF THIS OCCURS</u></b> | <b><u>CHECK THIS</u></b>  |
|------------------------------|---|
| NO SPRAY                     | Solution tank is empty, or filter is plugged up.<br>Clogged spray tip.<br>Pump not running.<br>Valve on wand not operating.<br>Solution hose not completely connected to hose or to machine.  |
| PUMP DOES NOT RUN            | This pump motor runs on DC voltage, and it should start running as soon as you turn on the switch. If the pump motor does not start running, check the wiring to the switch, to the bridge rectifier, and to the motor. Check the switch to see if it is 'open.' Measure the DC voltage out of the bridge rectifier (should be about 100V).         |
| LOW SUCTION                  | Debris is plugging cleaning tool or vacuum hose.<br>Drain gate is not completely closed, or seals are damaged.<br>Recovery Tank lid is not closed completely or is damaged.   |
| NO SUCTION                   | Ball in the float is blocking air flow. Turn off the vacuum so the ball will drop down.<br>No power to motor. Does the switch light up? If not, the switch may be bad or there may be no power getting to the switch. Check wiring connections.<br>Test the switch with a volt/ohm meter.<br>Test the vacuum motor by connecting it directly to AC. |
| LOW HEAT                     | Spraying for too long will significantly drop the heat. Try spraying for 8 - 10 seconds, or about three strokes.<br>Heat exchanger needs to be flushed.<br>Wrong tool being used. Too much water passing through. Longer hose or larger diameter hose than standard.  |
| NO HEAT                      | Heat is not turned on.<br>No power in the wall outlet - check to see if the breaker has tripped.<br>No power to the heat switch - check wiring for 'opens.'<br>No power out of heat switch. Replace switch.<br>Call your distributor for additional help.   |

## SPECIFICATIONS:

Vacuum: One, 3-stage  
 VAC Shutoff: Ball Float  
 Waterlift: 137"  
 Pump: 500 PSI, positive displacement, adjustable  
 Heat: 212° F, Maximum  
 Heater: 2000 Watts  
 Weight: 100 lbs.  
 Dimensions: 18W x 38L x 34.5H (inches)

**SERVPRO INDUSTRIES, INC.**  
**575 AIRPORT BLVD.,**  
**GALLATIN, TN 37066**  
**615-451-0200**