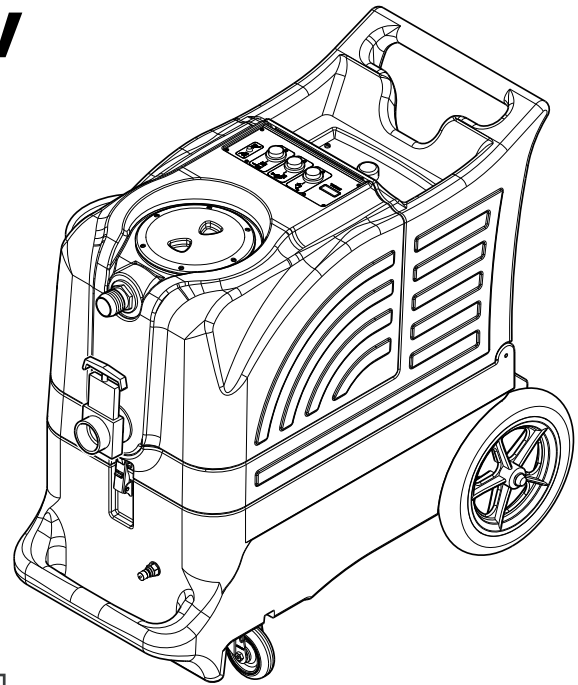




ADVANTAGE-100H-SC EXTRACTOR 120V

INFORMATION & OPERATING INSTRUCTIONS



**CAUTION: DO NOT OPERATE MACHINE UNTIL YOU HAVE READ
ALL SECTIONS OF THIS INSTRUCTION MANUAL**



IMPROPER USE OF THE MACHINE WILL VOID THE WARRANTY

1. Always use a defoamer when foaming occurs to prevent vacuum motor damage.
2. Connect the machine to a properly grounded outlet of 20 amps or greater.
3. Keep machine from rain and snow, extremes in temperatures, and store in a heated location. Use the machine indoors. Do not use outdoors.
4. Use approved chemicals only. NO SOLVENTS.
5. Never use water above 130° F/54° C in the solution tank.

IMPORTANT SAFETY INSTRUCTIONS

This machine is only suitable for commercial use, for example in hotels, schools, hospitals, factories, shops and offices other than normal residential housekeeping purposes.

When using any electrical appliance, basic precautions should always be followed, including the following:

NOTE: Read all instructions before using this machine.

WARNING!

To reduce the risk of fire, electric shock, or injury:

- Do not leave the machine unattended when it is plugged in. Unplug the unit from the outlet when not in use and before servicing.
- To avoid electric shock, do not expose to rain or snow. Store, and use, indoors.
- Do not allow to be used as a toy. Close attention is necessary when used near children.
- Use only as described in this manual. Use only the manufacturer's recommended attachments.
- Never add water over 130° F/54° C to the solution tank.
- Plug must be connected to an outlet on a 20 amp (or greater) circuit breaker.
- Do not use with damaged cord or plug. If the machine is not working as it should, has been dropped, damaged, left outdoors or dropped into water, return it to a service center.
- Do not pull by the cord, use the cord as a handle, close a door on the cord, or pull the cord around sharp edges or corners. Do not run the machine over the cord. Keep the cord away from heated surfaces. To unplug, grasp the plug, not the cord.
- Do not handle the plug, the cord or the machine with wet hands.
- Extension cords must be 12/3 and no longer than 50 feet. Replace the cord or unplug immediately if the ground prong becomes damaged.
- Do not put any object into openings. Do not use with any opening blocked; keep free of dust, lint, hair, and anything that may reduce air flow.
- Keep loose clothing, hair, fingers, and all parts of body away from openings and moving parts.
- Do not pick up anything that is burning or smoking, such as cigarettes, matches, or hot ashes, or any health endangering dusts. Do not use to pick up flammable or combustible liquids such as gasoline or use in areas where they may be present.
- Turn off all controls before unplugging.
- Use extra care when cleaning on stairs.
- Connect to a properly grounded outlet only.
- Liquid ejected at the spray nozzle could be dangerous as a result of its temperature, pressure, or chemical content.

INSPECTION:

Carefully unpack and inspect your ADVANTAGE-100H-SC for shipping damage. Each machine is tested and inspected before shipping. Any shipping damage incurred is the responsibility of the carrier. You should notify the carrier immediately if you notice damage to the box or to the machine or parts.

CLEANING SOLUTIONS:

We recommend liquid cleaning chemicals. Powder chemicals may be used, but unless mixed very thoroughly they could cause a build-up in the pump, lines, heat exchanger and/or quick disconnects. Any problem caused by a chemical build-up is not covered by warranty. Use a neutral cleaner with a pH between 5 and 10 to avoid premature wear of the pump, seals, and/or other components.

MAINTENANCE:

For optimum performance flush the machine with clear water at the end of each working day. Once a month, minimum, run a flushing compound through the machine to break up any mineral or chemical build-up that may have formed. The vacuum motor and the pump do not require any scheduled maintenance; however, the motor may require replacement brushes after 1000 - 1500 hours. Clean the body with an all-purpose detergent, and protect it with an automobile interior polish. Lubricate the wheels, castors, and quick disconnects with an all purpose silicone spray.

PARTS AND SERVICE:

Repairs, when required, should be performed by your authorized distributor who maintains an inventory of original replacement parts and accessories. Call the distributor from whom you purchased this machine if you need parts and service. Be sure to specify the machine model. Have your serial number handy.

Serial Number: _____

Model: ADVANTAGE-100H-SC

Purchase Date: _____

Write the name and phone number of your distributor:

(and be sure to register your warranty: go on-line to www.usproducts.com)

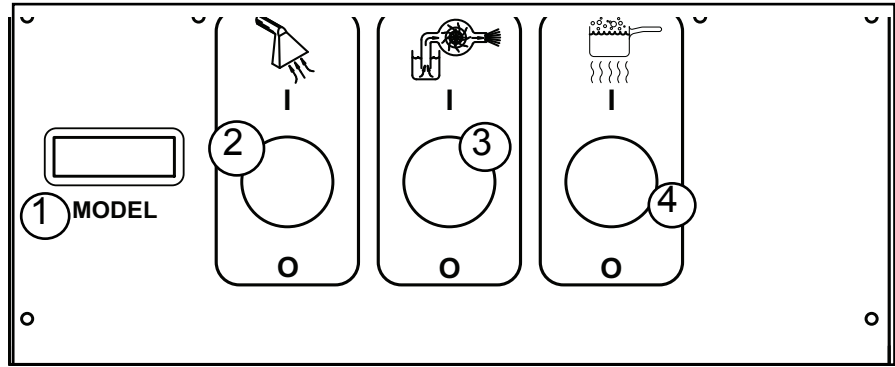
SWITCH PLATE

MODEL (1):

This identifies the model of your Advantage machine.

VACUUM SWITCH (2):

This push-button switch turns on the vacuum. The switch will illuminate when it is on.



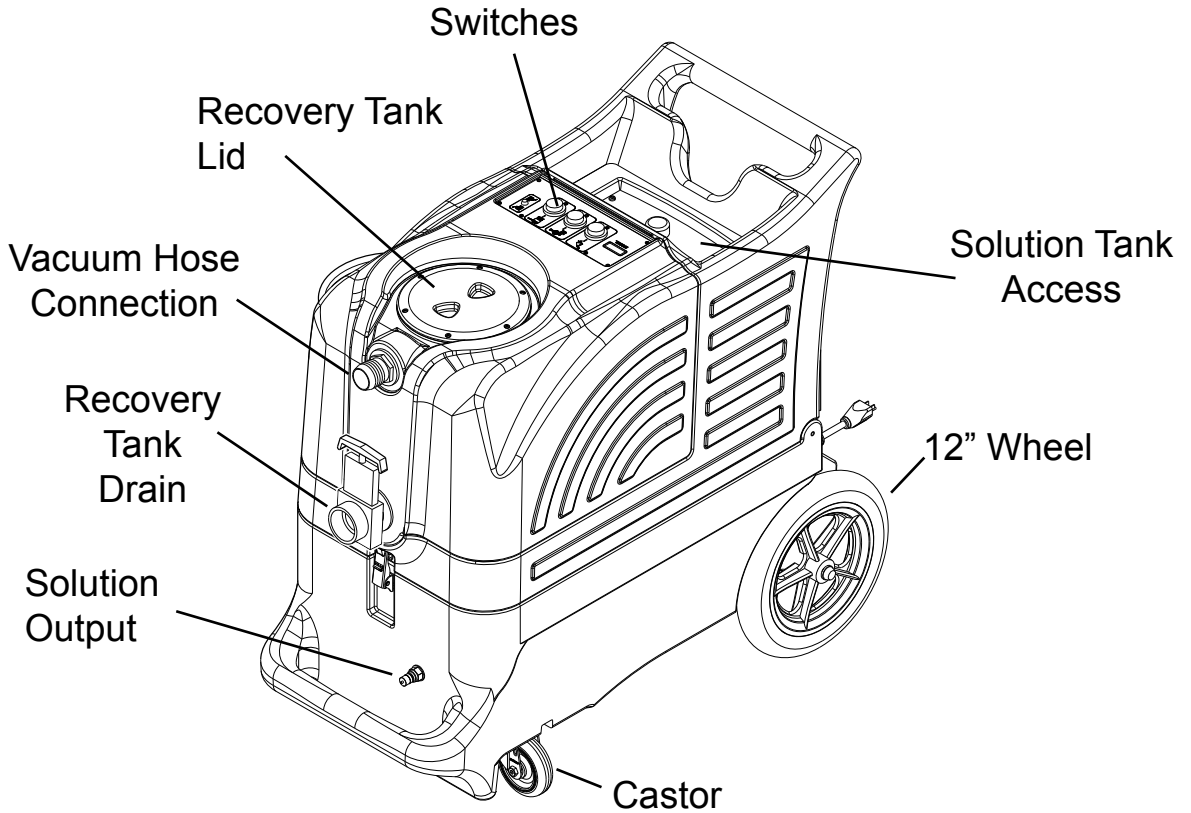
PUMP SWITCH (3):

The pump switch will illuminate when it is activated, and it will turn on the pump.

HEAT SWITCH (4):

The heat switch will illuminate when it is activated and will turn on the heater.

YOUR MACHINE



SET-UP & OPERATION:

1. Before each job, check your machine and tool(s) for cleanliness and completeness.
2. Fill the holding tank with clear water, and prespray with the detergent of your choice. If you choose to add a detergent to the solution tank, be sure to mix well, and always follow the use & dilution instructions on the chemical label.

Although this machine is designed to supply instant hot water, the addition of warm water to the holding tank would increase heater efficiency. Never use water above 130° F/54° C in the solution tank.

3. Turn off all the switches. Plug the power cord into a properly grounded outlet.

IF YOU WANT HEATED SOLUTION: follow Step #4, otherwise go to Step #5.

4. Turn on the Heat switch, and wait two minutes for the heat exchanger to reach temperature.
5. Turn on the pump and spray through your tool a few times to fill the lines with solution. Begin cleaning.
6. Refill and empty the tanks as necessary.
7. When finished with the job, vacuum all unused solution into the recovery tank, and dump the liquid from the tank. Clean the tanks and filters. Clean the tool and hoses. Store the machine in a heated location.

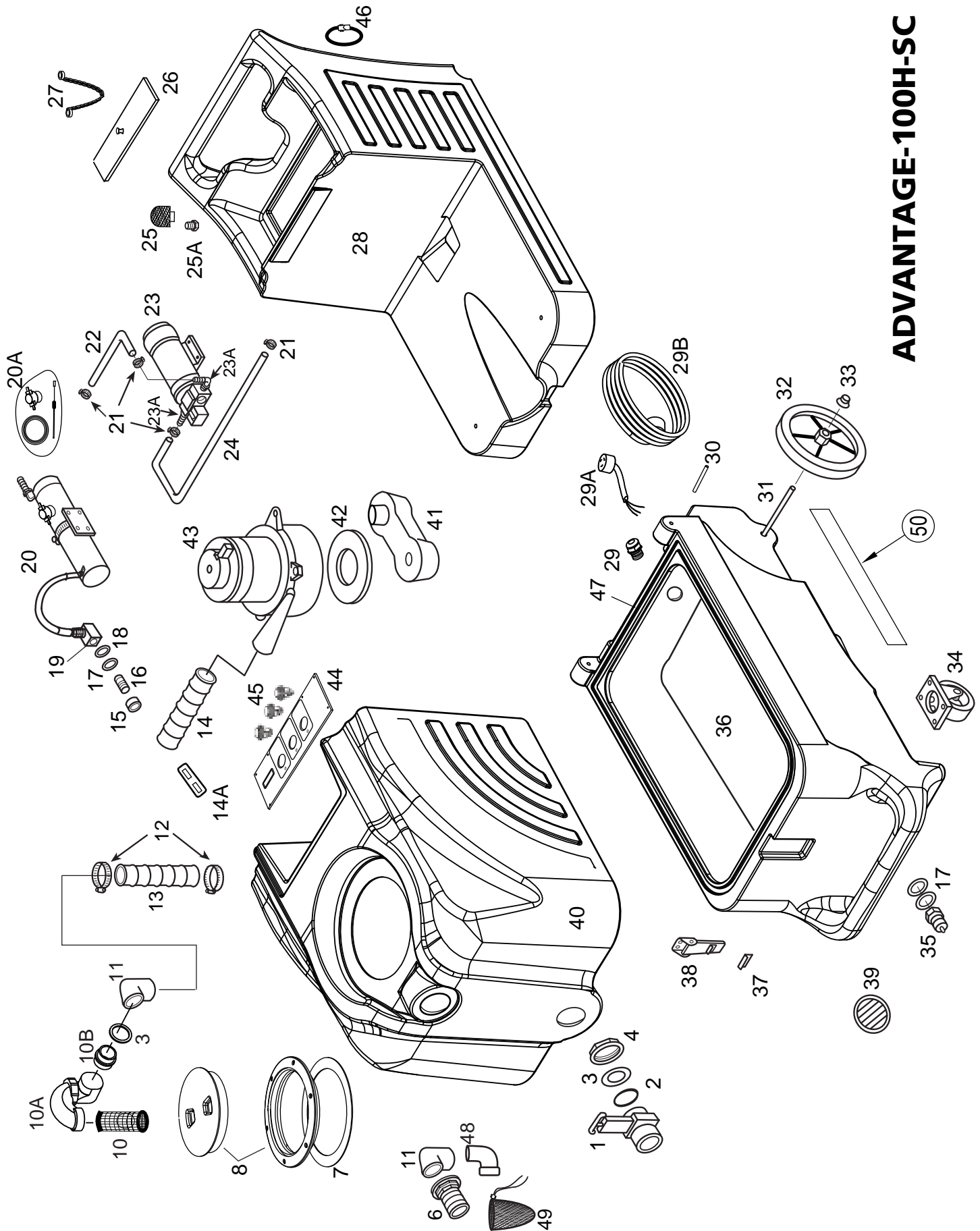
AUTO VACUUM SHUTOFF:

When the recovery tank is full, the ball float will shut-off the suction to prevent the machine from overflowing.

NOTE: the float may not work if there is foam in the tank. **Always use defoamer to prevent overflow.**



CAUTION: Always make sure the float cage is clean and the ball can travel freely before turning on the machine



ADVANTAGE-100H-SC

ADVANTAGE 100H-SC 120V

Item	Ref. No.	Qty	Description	Item	Ref. No.	Qty	Description
1#	903USP	1	Drain Gate	25	207A	1	Filter, pump inlet
2#	187USP	1	O-Ring	25A#	92BUSP	1	Nipple, PVC
3	187B	2	Washer, rubber	26	2175	1	Lid, solution tank
4#	185USP	1	Nut, 1-1/2"	27#	805USP	1	Chain, 8"
6	907	1	Hose Barb, vacuum inlet	28	TKC-6	1	Solution Tank
7	1074	1	Gasket	29#	230USP	2	Retainer, for power cord pigtail
8	2086A	1	Lid with Ring, 6"	29A	2155	1	Pig-tail, power cord, 2 ft
#	56380968	1	O-Ring for 2086A Lid	29B	2154	1	Power cord, 25 ft
10	929B	1	Ball Float, vac shut-off	30	801	2	Hinge pin
10A	1154A	1	Adapter, ABS trap	31#	910-1863	1	Axle rod (18.63" long)
10B	1154	1	Adapter, ABS	32	2092	2	Wheel, 12"
11#	922USP	2	Elbow, PVC, FPT	33#	27AUSP	2	Axle cap
12#	156USP	2	Hose Clamp	34#	905USP	2	Castor
13	430	25.5"	Hose, vacuum, 2"ID X 25.5"	35#	45USP	1	Quick disconnect
14	430A	1	Hose, vacuum, 2"ID X 13.5"	36	BMPE-1	1	Base compartment
14A	4404C	1	Bar, vacuum hose hold-down	37	909A	1	Catch, for latch
15#	116USP	1	Bushing, fiber, heat resistant	38#	56471194	1	Latch
16#	92AUSP	1	Nipple, 1/4 mpt, S/S	39#	459USP	1	Louver, 2-1/2"
17#	115USP	1	Washer, fiber, heat resistant	40	VT-29	1	Recovery Tank
18	31	1	Washer, brass	41	MA-6	1	Manifold, vacuum
19#	91USP	1	Elbow, brass	42	2013	1	Gasket, vacuum
20	FP606	1	Heat Exchanger	43	408G	1	Vacuum motor, 3 stage, 5.7"
20A	FP256	1	Heat Repair kit	44	2167	1	Switch plate
21#	166USP	4	Hose Clamp	[]	2167-1C	1	Overlay
22	925	1	Hose, 3/8" ID X 48"	45	1623R	3	Switch, ON/OFF
23#	53869A	1	Pump, 100 psi	46	1603	2	Strap, cord wrap
23A	108A	2	Hose barb/90° elbow	47	FP228A	84"	Gasket, 78-1/2"
24	925	1	Hose, 3/8" X 11-1/2"	48	1140	1	Elbow, 90°, ABS
				49	FP619	1	Pre-filter bag
				50#	2162	2	Label Advantage Series

[] = Not Shown

= Revised or new since last update

Advantage-100H-SC

TROUBLE SHOOTING:

<u>IF THIS OCCURS</u>	<u>CHECK THIS</u>
NO SPRAY	Solution tank is empty, or filter is plugged up. Clogged spray tip. Pump not running. Valve on wand not operating. Solution hose not completely connected to hose or to machine.
PUMP DOES NOT RUN	This pump has a built-in pressure switch, so it only runs when you release the pressure by spraying. Make sure pressure has been released. Remove the hose from the outlet side of the pump and hold it over a bucket. Turn on the pump to see if water flows through the pump. If so the problem is not in the pump.
LOW SUCTION	Debris is plugging cleaning tool or vacuum hose. Drain gate is not completely closed, or seals are damaged. Vacuum dome is not seated or is damaged.
NO SUCTION	Ball in the float is blocking air flow. Turn off the vacuum so the ball will drop down. No power to motor. Does the switch light up? If not, the switch may be bad or there may be no power getting to the switch. Check wiring connections. Test the switch. Test the vacuum motor.
LOW HEAT	Spraying too long. Try spraying for 8 - 10 seconds, or about three strokes. Heat exchanger needs to be flushed. Wrong tool being used. Too much water passing through. Longer hose or larger diameter hose, than standard.
NO HEAT	Heat is not turned on. No power in the wall outlet - check to see if the breaker has tripped. No power to the heat switch - check wiring for 'opens.' No power out of heat switch. Replace switch. Call your distributor for additional help.

SPECIFICATIONS:

Rotomolded Body: Lifetime Warranty
 Vacuum: One, 3-stage
 VAC Shutoff: Ball Float
 Pump: 100 psi, demand diaphragm pump
 Waterlift: 137"
 Heat: 180° F, Maximum
 Heater: 1100 Watts
 Wand: Stainless steel, double bend, twin tip
 Weight: 85 lbs.
 Dimensions: 18W x 38L x 34.5H (inches)