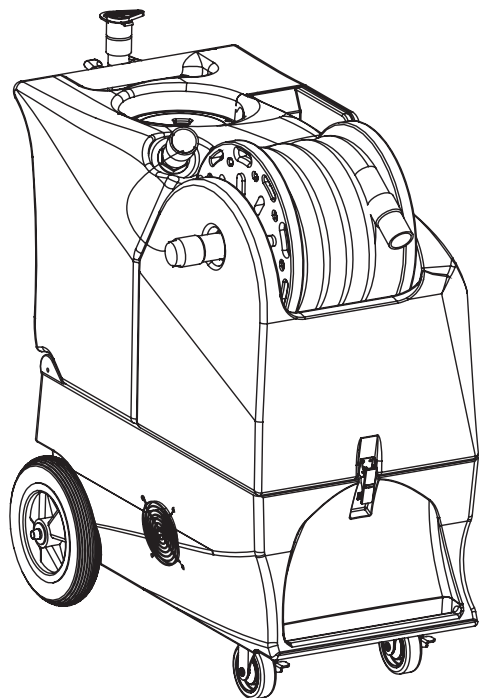




LT-350 EXTRACTOR 120V



INFORMATION & OPERATING INSTRUCTIONS



**DO NOT OPERATE MACHINE UNTIL YOU HAVE READ
ALL SECTIONS OF THE INSTRUCTIONS
IMPROPER USE OF THE MACHINE WILL VOID THE WARRANTY**

1. Always use a defoamer when foaming occurs to prevent vacuum motor damage.
2. Keep machine from rain and snow, extremes in temperatures, and store in a heated location. Use the machine indoors. Do not use outdoors.
3. Do not let the pump run dry.
4. Use approved chemicals only. NO SOLVENTS.
5. Wear gloves or use rags when removing quick disconnects to prevent burns.

IMPORTANT SAFETY INSTRUCTIONS

This machine is only suitable for commercial use, for example in hotels, schools, hospitals, factories, shops and offices other than normal residential housekeeping purposes.

When using any electrical appliance, basic precautions should always be observed, including the following:

NOTE: Read all instructions before using this machine.



WARNING!

To reduce the risk of fire, electric shock, or injury:

- Do not leave the machine unattended when it is plugged in. Unplug the unit from the outlet when not in use and before servicing.
- To avoid electric shock, do not expose to rain or snow. Store, and use, indoors.
- Do not allow to be used as a toy. Close attention is necessary when used near children.
- Use only as described in this manual. Use only the manufacturer's recommended attachments.
- Never add water over 130° F/54° C to the solution tank.
- Do not use with damaged cord or plug. If the machine is not working as it should, has been dropped, damaged, left outdoors or dropped into water, return it to a service center.
- Do not pull by the cord, use the cord as a handle, close a door on the cord, or pull the cord around sharp edges or corners. Do not run the machine over the cord. Keep the cord away from heated surfaces. To unplug, grasp the plug, not the cord.
- Do not handle the plug, the cord or the machine with wet hands.
- Extension cords must be 12/3 and no longer than 50 feet. Replace the cord or unplug immediately if the ground prong becomes damaged.
- Do not put any object into openings. Do not use with any opening blocked; keep free of dust, lint, hair, and anything that may reduce air flow.
- Keep loose clothing, hair, fingers, and all parts of body away from openings and moving parts.
- Do not pick up anything that is burning or smoking, such as cigarettes, matches, or hot ashes, or any health endangering dusts. Do not use to pick up flammable or combustible liquids such as gasoline or use in areas where they may be present.
- Turn off all controls before unplugging.
- Use extra care when cleaning on stairs.
- Connect to a properly grounded outlet only.
- Liquid ejected at the spray nozzle could be dangerous as a result of its temperature, pressure, or chemical content.

INSPECTION:

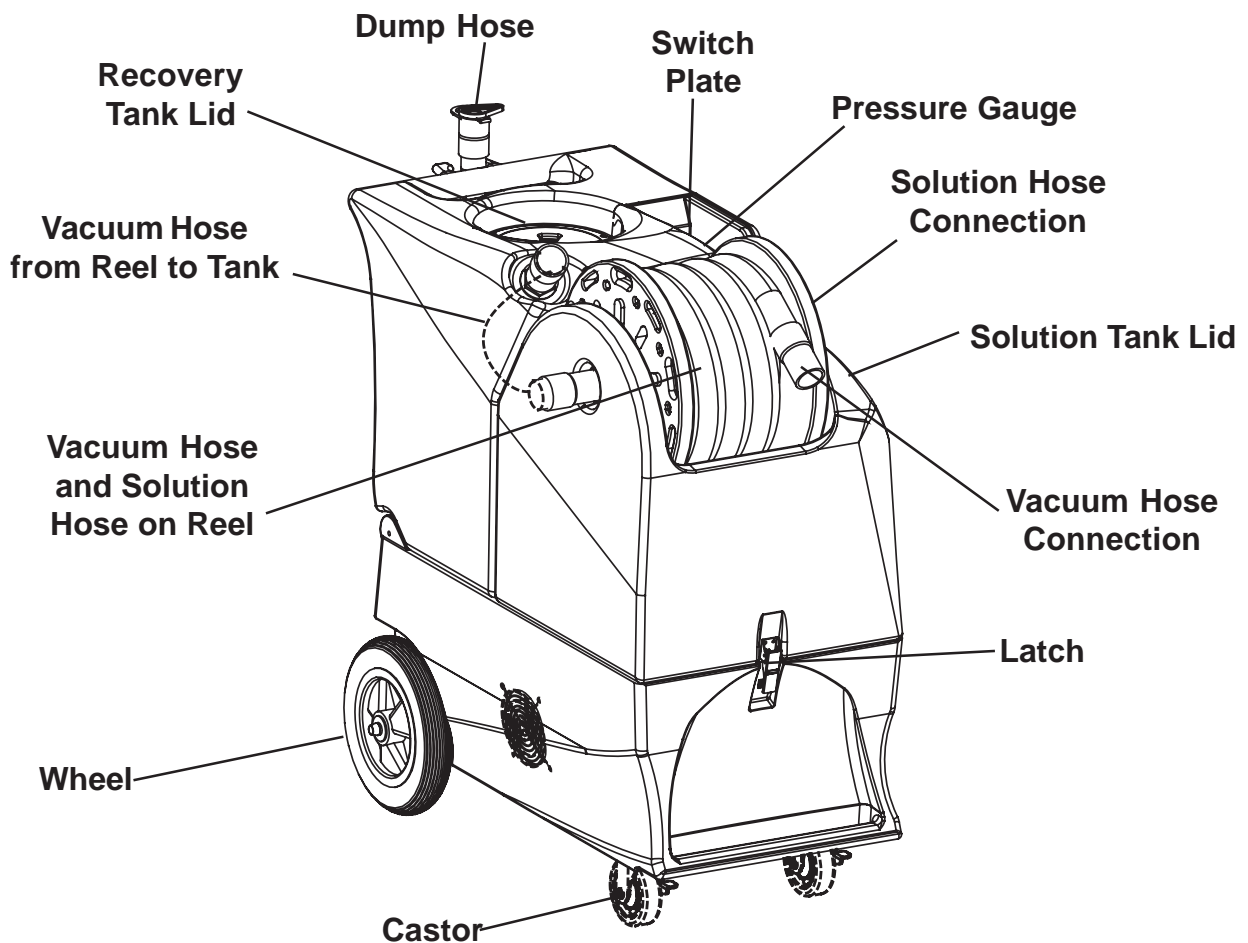
Carefully unpack and inspect your LT-350 for shipping damage. Each machine is tested and inspected before shipping. Any shipping damage incurred is the responsibility of the carrier. You should notify the carrier immediately if you notice damage to the box or to the machine or parts.

CLEANING SOLUTIONS:

We recommend liquid cleaning chemicals. Powder chemicals may be used, but unless mixed very thoroughly they could cause a build-up in the pump, lines, heat exchanger and/or quick disconnects. Any problem caused by a chemical build-up is not covered by warranty. Use a neutral cleaner with a pH between 5 and 10 to avoid premature wear of the pump, seals, and/or other components. Damage caused by the use of strong chemicals is not covered by the warranty.

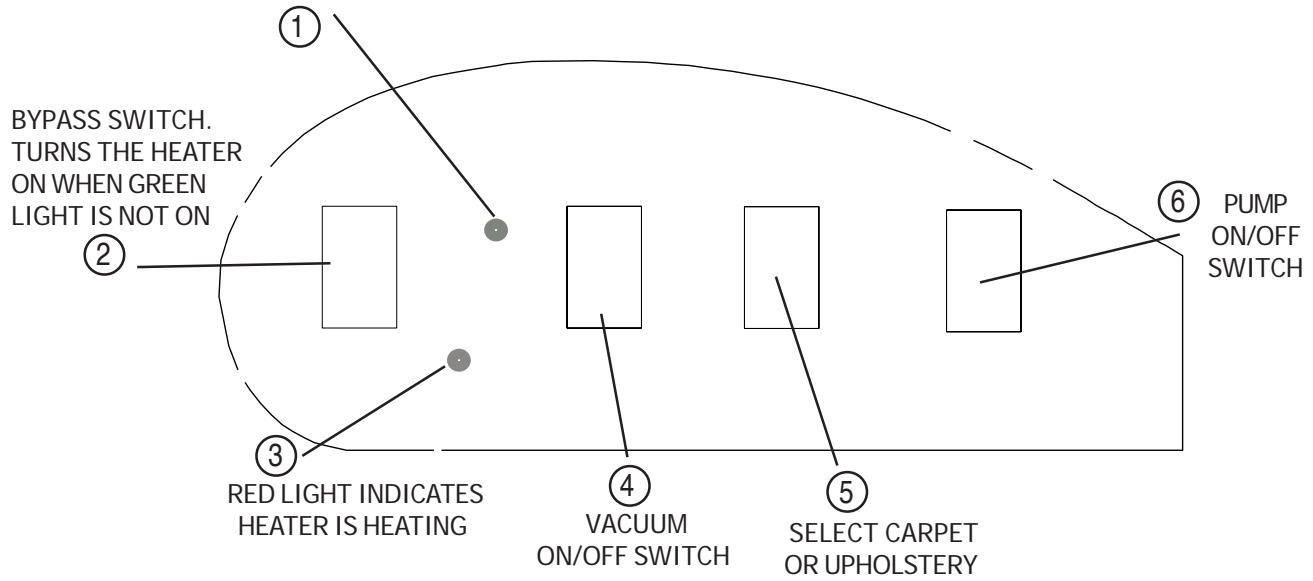
MAINTENANCE:

For optimum performance flush the machine with clear water at the end of each working day. Once a month, minimum, run a flushing compound through the machine to break up any mineral or chemical build-up that may have formed. Lubricate the wheels, castors, and quick disconnects with an all purpose silicone spray. The vacuum and the pump do not require any maintenance. Clean the body with an all purpose detergent, and protect it with an automobile interior polish.



SWITCH PLATE

CIRCUIT LOCATOR LIGHT INDICATES TWO CIRCUITS.
HEATER WILL AUTOMATICALLY TURN ON.



Record the serial number and model of your new extractor here:

Serial Number: _____

Model: LT-350

Purchase Date: _____

Write the name and phone number of your distributor:

(and be sure to register your purchase to activate your warranty)

SET UP and OPERATION

- 1 Inspect the machine, hoses, and cleaning tools for cleanliness and completeness.
- 2 Fill the solution tank with water. Using warm water may be a benefit in cleaning effectiveness, but do not use hot water (above 130° F / 54°C) in the tank.
- 3 Plug in the power cords. Do not connect both cords to the same outlet; the green circuit locator light (1) on the switch plate should light up. If the locator light does not come on, try different outlets until it does. If you are certain the cords are on separate circuits, turn the bypass switch ON (2). This will allow the heater to turn on.
CAUTION: using the bypass switch when the cords are on the same circuit may cause the breaker in the wall to trip. **NOTE:** the red light will turn on only when the heat exchanger is actively heating.
- 4 Connect the priming hose to the machine, turn the pump switch ON (6) and prime the air out of the pump by allowing the water to flow unrestricted. When the water is clear (no air in it) turn the pump off and remove the priming hose. **NOTE:** if priming is difficult, place the open end of the priming hose into the vacuum inlet hose barb, and turn the vacuum on (4). Use your hand to

block the open area in the hose barb. This will allow the pump and the vacuum to work together to get the water moving. Priming may take 20-60 seconds, and the solution tank should be full.

Once the pump is primed, turn the pump and the vacuum OFF. Remove the priming hose.

- 5 Add liquid cleaning chemical, with a pH between 6 and 9, to the solution tank.
- 6 Attach the spray hose to the solution quick disconnect and the vacuum hose to the hose barb on the recovery tank. Pull the hoses out of the reel. Attach the other ends of the hoses to the cleaning tool.
- 7 Allow the heat exchanger two minutes to reach operating temperature. The red light (3) will go out when the heater has reached maximum operating temperature.
- 8 Turn the pump on and set the pressure selection switch to the desired spraying pressure: 300 or 50 PSI).
- 9 Turn the vacuum ON.
- 10 Begin cleaning using the correct hoses and tool.
- 11 Use defoamer in the recovery tank any time foaming occurs.
- 12 Monitor the water level in the solution tank. Do not let the pump run dry.
- 13 When the solution tank gets low, turn the pump and the vacuum off, fill the solution tank, empty and clean the recovery tank.
- 14 When finished with the job, remove any unused solution from the solution tank, and run a few gallons of clean water through the system. Drain the recovery tank by placing the dump hose over a drain, or into a bucket, and remove the hose cap. Disconnect the hoses from the cleaning tool, and reel the hoses up onto the hose spool.

NOTE: to remove the reel, with the hoses, from the machine, pull the vacuum hose loose from the hose barb on the front of the tank. Disconnect the solution hose quick coupling. Push the vacuum hose into the center of the spool. Grasp the spool on both sides, and lift it off the machine. **NOTE:** before servicing any component in the base cabinet, the hoses and spool must be removed from the machine before the tanks can be lifted open.

ELECTRIC CIRCUIT LOCATOR

This unique, patented system is operated by a solid state circuit. It will inform the operator when the two cords are plugged into separate circuits by turning on the circuit locator light. This helps to prevent tripping circuit breakers. **NOTE:** if the green, circuit locator light does not illuminate when the cords are plugged in, then both cords are on the same circuit. Try other outlets with one of the cords until you get the locator light to come on. **NOTE:** if the bypass switch is turned on when both cords are on the same circuit, the breaker in the wall may trip.

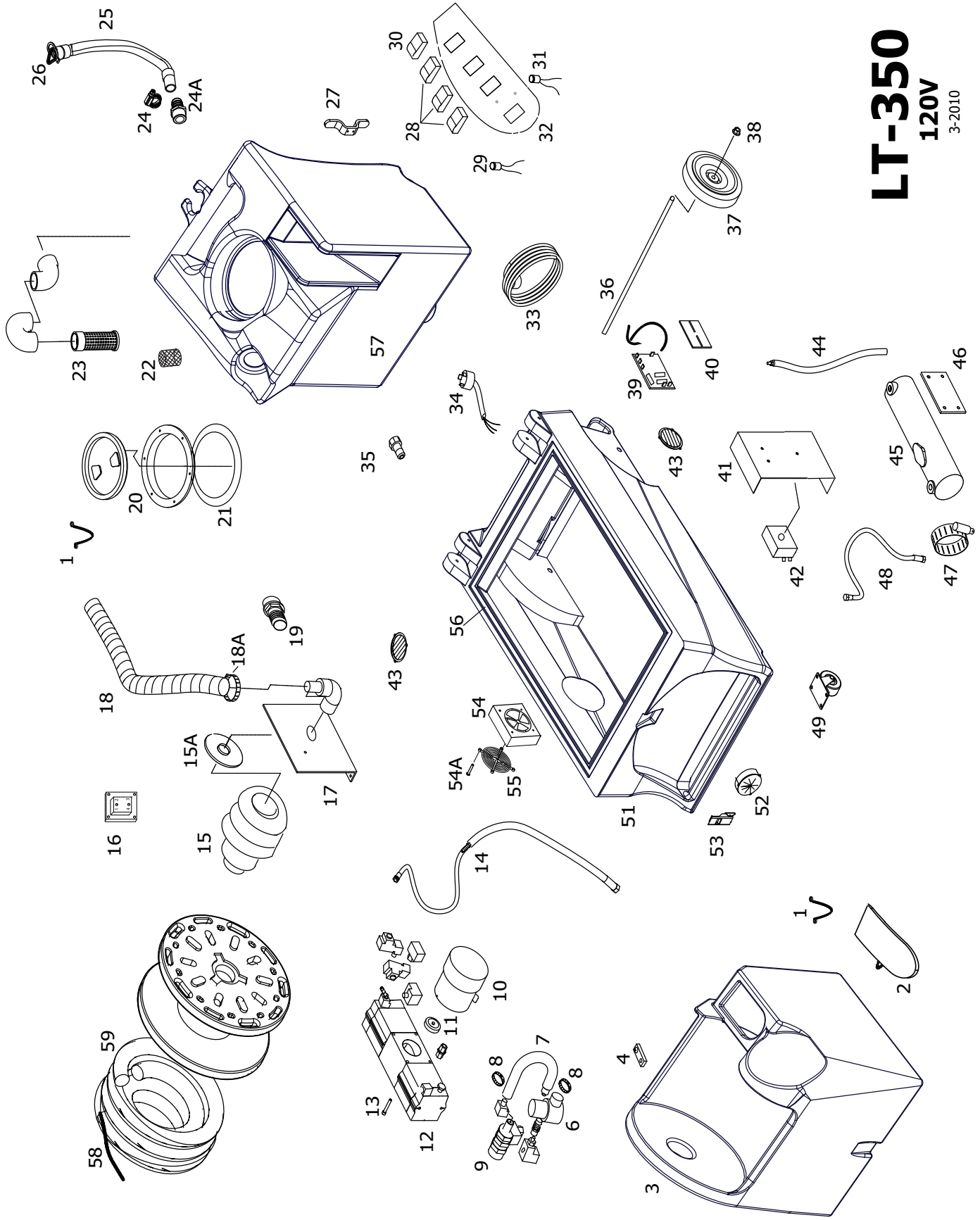
BALL FLOAT VACUUM SHUT-OFF:

Prior to using the machine, always check that the float filter is clean and the ball can travel freely. When the recovery tank is full, the ball float will rise and will shut off the vacuum flow to prevent any more water from entering the tank. Turn off the vacuums, and empty the recovery tank.

NOTE: if foam is present, or if the ball float is prevented from rising, the float will not be able to stop the air flow, and the tank may over fill. Water damage to the vacuum motors is not covered by warranty.



CAUTION: to avoid vacuum motor damage, always use a defoamer any time foam is present.



LT-350

120V

3-2010

LT-350 EXTRACTOR

PART LIST

120V

<u>ITEM</u>	<u>PART No.</u>	<u>DESCRIPTION</u>	<u>ITEM</u>	<u>PART No.</u>	<u>DESCRIPTION</u>
1	805	Chain, lid, 8"	41	918	Heat sink plate
2	FP446	Lid, solution tank	42	-----	See miscellaneous
3	HCP-1	Holding tank, white	43	928	Louver, 3", includes screws
4	1088	Glide, teflon	44	1377	Hose, hydraulic, 27-3/4"
6	2062	Solenoid valve	45	FP357	Heat exchanger, complete
7	925	Hose, 3/8" X 8"	46	455	Mount, heat exchanger
8	156	Hose clamp	47	198	Hose clamp
9	945A	Valve, pressure unloader	48	1278	Hose, hydraulic, 13"
10	2060	Motor, pump	49	905	Castor, 4"
11	950A	Cam/bearing assembly	51	BCP-BLK	Base, black
12	FP449A	Pump complete, no mtr or solenoid	52	2164	Pressure gauge
13	1147	Cap screw, pump to motor	53	908A	Latch, rubber
14	944	Hose, pulsation dampening	54	2014	Fan, 100 CFM, cooling
15	913	Vacuum motor, 3-stage	54A	2B1	Screw, 6-32 X 2-1/4"
15A	959	Gasket, vacuum motor	55	2015	Guard, cooling fan
16	4405A	Relay, vacuum	56	FP228A	Gasket, 87"
17	926	Manifold, vacuum motor mount	57	VCP-1	Vacuum tank, white
18	1136	Hose, vacuum inlet, 1-1/2" X 24 "	58	FP443	Pressure line, complete
18A	156	Hose clamp	59	919G	Vacuum hose, complete
19	907	Hose barb, for vacuum hose			
20	2086A	Lid, vacuum, with ring			
21	1074	Gasket, lid			
22	207A	Filter, pump inlet			
23	FP364	Ball float assembly			
24	1518	Hose clamp			
24A	907	Hose barb/vacuum hose			
25	1060B	Hose, drain, 1-1/2" x 24"			
26	1060C	Plug, drain hose			
27	CWKC-BLK	Cord wrap, Black			
28	FP345	Switch and acuator, motors			
29	78	Light, green, 120V			
30	FP346	Switch and actuator, heat/bypass			
31	78B	Light, red			
32	1357	Switch plate			
33	1057B	Cord, power, 25 ft, yellow			
34	1062	Receptacle, power cord			
35	45	Quick disconnect, male, 1/4 p.t.			
36	910-18.00	Axle, 18"			
37	2084	Wheel, 10"			
38	27A	Axle cap			
39	923B	Dual circuit sensor PCB			
40	FP336	PCB mount, snap track			

MISCELLANEOUS PARTS AND KITS

FP194C	Heat Repair kit includes probe, thermistor control, thermal cutout & circuit board
FP450A	Pump & motor, complete
FP444	Vacuum hose & pressure line, with reel complete
FP445	Vacuum hose & pressure line, complete, no reel
FP442	Swivel pressure hose, for reel, 16", complete

**LT-350
EXTRACTOR
120V**

SPECIFICATIONS:

Rotomolded Body: Lifetime Warranty
Vacuum: 7.2" 3-stage
VAC Shutoff: Ball float
Pump: Positive displacement, selectable pressure setting
Waterlift: 140"
Heat: Instant to 212° F
Heater: 2000 Watts
Wand: Light weight (only 6-1/2 lb), 2-tip
Weight: 112 lbs.
Dimensions: 38" H x 17 3/4" W x 36" L

NOTES:



425-322-0133 / 800-257-7982 / FAX: 425-322-0136
11015 - 47th Ave. W. / Mukilteo, WA 98275
VISIT US AT: <http://www.usproducts.com>