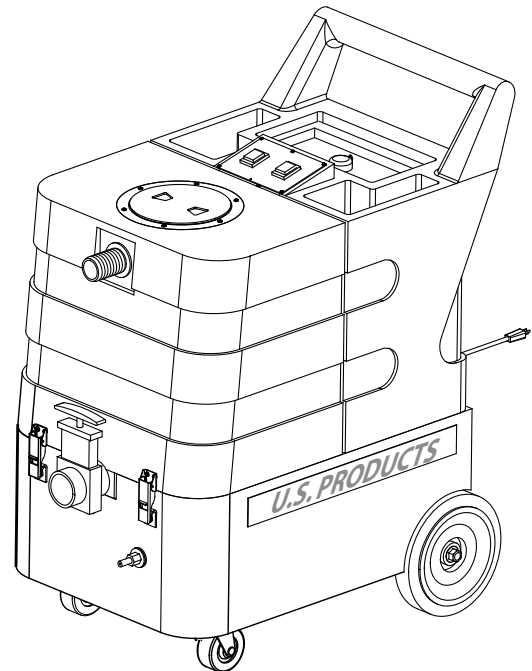




COBRA-H3-CE EXTRACTOR 220 - 240V

INFORMATION & OPERATING INSTRUCTIONS



CAUTION: DO NOT OPERATE MACHINE UNTIL YOU HAVE READ ALL SECTIONS OF THIS INSTRUCTION MANUAL



IMPROPER USE OF THE MACHINE WILL VOID THE WARRANTY

1. Always use a defoamer when foaming occurs to prevent vacuum motor damage.
2. Connect the machine to a properly grounded outlet, only.
3. Keep machine from rain and snow, extremes in temperatures, and store in a heated location. Use the machine indoors. Do not use outdoors.
4. Use approved chemicals only. NO SOLVENTS.
5. Wear gloves or use rags when removing quick disconnects to prevent burns.
6. Never use water above 54° C /130° F in the solution tank.

IMPORTANT SAFETY INSTRUCTIONS

This machine is only suitable for commercial use, for example in hotels, schools, hospitals, factories, shops, and offices other than normal residential housekeeping purposes.

When using any electrical appliance, basic precautions should always be followed, including the following:



WARNING!

To reduce the risk of fire, electric shock, or injury:

- Do not leave the machine unattended when it is plugged-in. Unplug the unit from the power outlet when not in use.
- Always use a defoamer when foaming occurs to prevent damage to vacuum motor(s).
- Unplug the machine from the power outlet before cleaning or servicing.
- To avoid electric shock, do not expose to rain or snow. Store, and use, indoors.
- Wear hearing protection if desired. The measured sound level of the MX 307 H is 79dB(A).
- Do not allow to be used as a toy. Close attention is necessary when used near children.
- Use only the manufacturer's recommended attachments.
- Inspect the power cord regularly for damage, such as cracking, ageing, or damaged insulation. Replace the power cord with the same type as original if any damage is found. Do not use with damaged cord or plug.
- Use approved chemicals only. Never use solvents.
- Do not let the pump run dry.
- If the machine is not working as it should, has been dropped, damaged, left outdoors or flooded with water, return it to a service center.
- Do not pull the machine by the cord, do not use the cord as a handle, close a door on the cord, or pull the cord around sharp edges or corners. Do not run the machine over the cord. Keep the cord away from heated surfaces. To unplug, grasp the plug, not the cord.
- Extension cords must be 12 gauge and no longer than 15 m. Replace the cord or unplug immediately if the ground prong becomes damaged.
- Never fill the tank with water above 54° C.
- Do not put any object into openings. Do not use with any opening blocked; keep free of dust, lint, hair, and anything that may reduce air flow.
- Keep loose clothing, hair, fingers, and all parts of body away from openings and moving parts.
- Do not pick up anything that is burning or smoking, such as cigarettes, matches, or hot ashes, or any health endangering dusts. Do not use to pick up flammable or combustible liquids such as gasoline or use in areas where they may be present.
- Turn off all controls before unplugging.
- Use extra care when cleaning on stairs.
- Liquid ejected at the spray nozzle could be dangerous as a result of its temperature, pressure, or chemical content.

INSPECTION:

Carefully unpack and inspect your COBRA-H3-CE for shipping damage. Each machine is tested and inspected before shipping. Any shipping damage incurred is the responsibility of the carrier. You should notify the carrier immediately if you notice damage to the box or to the machine or parts.

CLEANING SOLUTIONS:

We recommend liquid cleaning chemicals. Powder chemicals may be used, but unless mixed very thoroughly they could cause a build-up in the pump, lines, heat exchanger and/or quick disconnects. Any problem caused by a chemical build-up is not covered by warranty. Use a neutral cleaner with a pH between 5 and 10 to avoid premature wear of the pump, seals, and/or other components. Damage caused by the use of strong chemicals is not covered by the warranty.

MAINTENANCE:

For optimum performance flush the machine with clear water at the end of each working day. Once a month, minimum, run a flushing compound through the machine to break up any mineral or chemical build-up that may have formed. The vacuum motors and the pump do not require any scheduled maintenance; however, the vacuum motors may require replacement brushes after 1000 - 1500 hours. Clean the body with an all purpose detergent, and protect it with an automobile interior polish. Lubricate the wheels, castors, and quick disconnects with an all purpose silicone spray.

RECORD AND KEEP THE FOLLOWING INFORMATION

Serial Number: _____

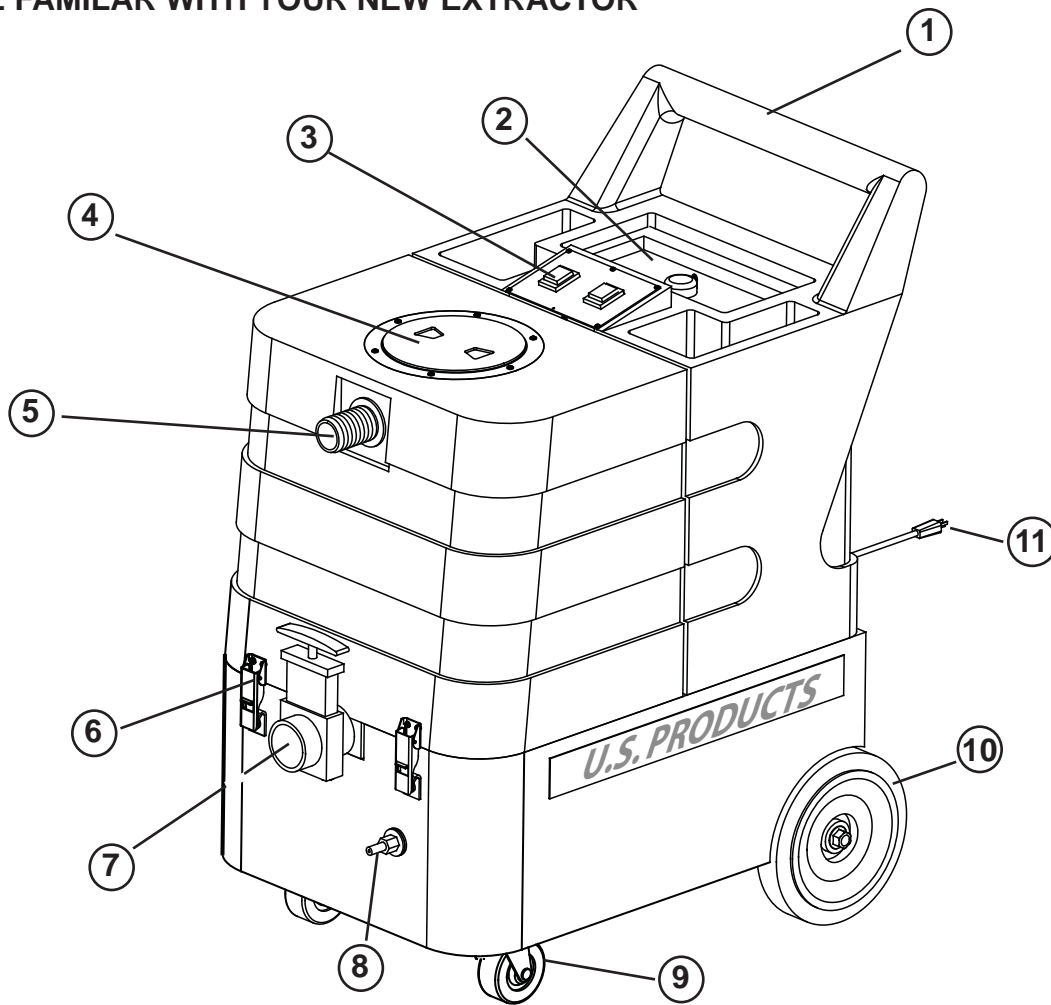
Model: COBRA-H3-CE

Purchase Date: _____

Write the name and phone number of your distributor: _____

(and be sure to register your purchase to activate your warranty)

BECOME FAMILAR WITH YOUR NEW EXTRACTOR



MACHINE DESCRIPTIONS

Operator Handle (1) - Operator holds this to move the machine from one location to another.

Solution Tank Lid (2) - Fill the solution tank here with warm water and chemicals.

Switch Plate (3) - This is where the switches are located that operate the pump, vacuum, and heater.

Recovery Tank Lid (4) - The recovery tank can be cleaned out by running clean water into this opening with the Drain Gate (7) open. The vacuum float Shut-OFF can also be accessed through this opening for maintenance.

Vacuum Inlet (5) - This is where the vacuum hose attaches to the machine.

Latch (6) - Open the latches to access the base compartment, which contains the motors and heater.

Drain Gate (7) - Open this gate to drain the recovered solution out of the machine. Be sure to keep this gate clean.

Solution Outlet (8) - Connect your solution hose here, This is where the hot water comes out.

Castor (9) - The castors swivel for easy maneuvering in tight spots.

Wheel (10) - Large, non-marking wheels for ease of transport.

Power Cord (11) - Two, 7.6 meter cords. Do not use if either cord is damaged.

Refer to the drawings on the previous page

OPERATION

- 1 Inspect the machine, hoses, and tools for cleanliness and completeness.
- 2 Fill the solution tank with warm water. Using warm water may be a benefit in cleaning effectiveness, but do not use hot water (do not use water hotter than 54°C / 130° F+) in the tank. Add liquid cleaning solution with a pH value of between 6 and 10. High pH detergents and/or acid rinses will accelerate the wear of the seals and will void the warranty.
- 3 Plug in the power cords. Turn the Heat switch on.
- 4 Attach the spray hose to the solution quick disconnect on the front of the machine and attach the vacuum hose to the hose barb on the recovery tank. Attach the other ends of the hoses to the cleaning tool.
- 5 Allow the heat exchanger two minutes to reach operating temperature.
- 6 Turn on the pump. Turn on the vacuum. **NOTE:** the pump has a built in pressure switch; the pump runs only while you are spraying.
- 7 Begin cleaning using the correct hoses and tool.
- 8 Use defoamer in the recovery tank or on the carpet any time foaming occurs, to prevent motor damage.
- 9 Monitor the water level in the solution tank. Do not let the pump run dry.
- 10 When the solution tank gets low, turn off the pump, empty and clean the recovery tank, and fill the solution tank.
- 11 When finished with the job, remove any unused solution from the solution tank, and run a few gallons of clean water through the system to rinse out any detergent.
- 12 Empty and clean the recovery tank.



CAUTION! If water or foam comes out of the vacuum exhaust, turn the machine off immediately

BALL FLOAT VACUUM SHUT-OFF

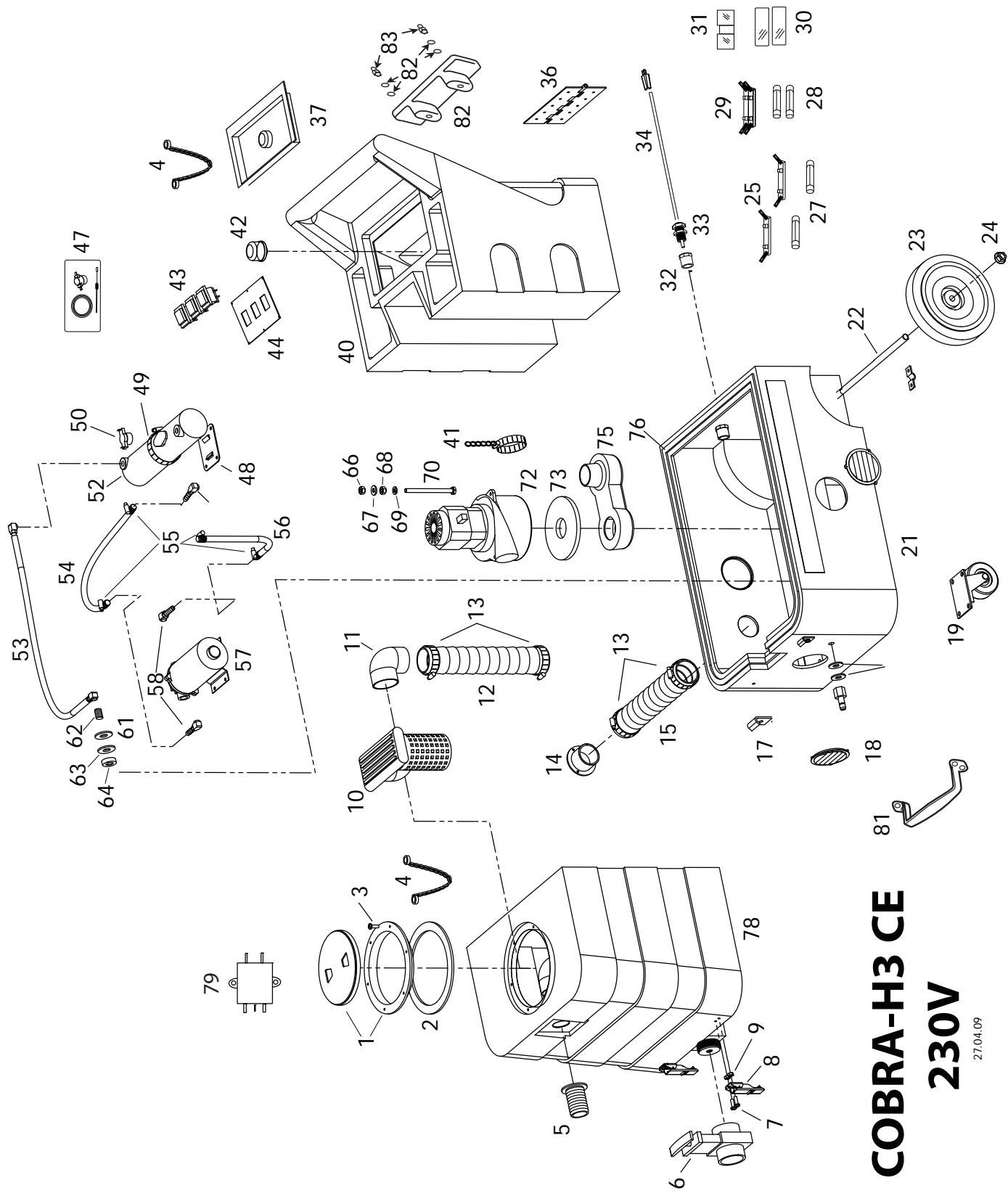
Prior to using the machine, always check that the float filter is clean and the ball can travel freely. When the recovery tank is full, the ball float will rise and will shut off the vacuum flow to prevent any more water from entering the tank when this happens turn off the vacuum, and empty the recovery tank.

NOTE: if foam is present or if the ball float is prevented from rising, the float will not be able to stop the air flow, and the tank may over fill.



CAUTION!

To avoid vacuum motor damage, always make sure the float filter is clean and the ball can travel freely prior to using the machine. And always use a defoamer when foaming occurs.



COBRA-H3 CE 230V

27.04.09

COBRA-H3 EXTRACTOR

PART LIST

220 - 240

<u>ITEM</u>	<u>PART No.</u>	<u>DESCRIPTION</u>	<u>ITEM</u>	<u>PART No.</u>	<u>DESCRIPTION</u>
1	2086A	Lid and Ring	43	48H	Switch, rocker, ON/OFF
2	1074	Gasket, for lid ring	44	2006B	Switch plate
3	1148	Screw, 6-32 X 1/2"	47	FP256	Heat Repair Kit
4	FP436	Chain Assy for lid	48	455	Bracket, heater mount
5	907	Hose barb, for recovery hose	49	198	Hose clamp
6	903D	Drain Gate	50	See No 47	Bimetallic heat switch
7	21C	Screw, 8-32 X 5/8"	52	FP___	Heat exchanger
8	908	Latch	53	2012	Hose, heater to outlet
9	325	Locknut	54	925	Hose, 48", pump to heater
10	FP193	Ball float and manifold	55	166	Hose clamp
11	921	Elbow, PVC	56	925	Hose, 13", pump inlet
12	430E	Vac hose, 20"	57	2017	Pump, 7 bar / 100 psi
13	156	Hose Clamp	58	108A	Hose barb/elbow
14	440	Flange, exhaust	61	31	Washer, brass
15	430B	Vac hose, 21"	62	92A	Nipple
17	909A	Strike, latch closure	63	115	Washer, fiber
18	928	Louver	64	116A	Bushing, fiber
19	2002	Castor	66	8	Locknut
20	180	Bracket, axle mount	67	14	Washer, flat
21	BS-6-1	Base Compartment	68	136	Nut, finish
22	913-16.93	Axle rod	69	137	Washer, split lock
23	2003	Wheel	70	270	Bolt
24	27A	Axle cap	72	408D	Vacuum motor
25	1341	Fuse Holder, single	73	2013	Gasket, for vac motor
27	1338	Fuse, 10 amp	75	MA-6	Manifold
28	1339	Fuse, 12 amp	76	1043A	Gasket
29	1342	Fuse holder, double	78	VT-26	Tank, recovery
30	2139	Cover, fuse, single	79	2020A	Filter, electrical
31	2140	Cover, fuse, double	81	2010A	Handle, lift
32	937	Reducer, bushing	82	CWBLK	Cord wrap
33	230	Retainer, for power cord	83	203	Washer, plastic
34	FP654	Power cord and plug	84	260	Nut, acorn
36	917	Hinge			
37	901	Lid, solution tank			
40	HT-23	Tank, solution			
41	FP586	Hose clamp & chain			
42	207A	Filter, pump inlet			

MISCELLANEOUS PARTS AND KITS

919	Vacuum hose assembly, 4.5 m
FP157	Solution hose assembly, 4.5 m

TROUBLESHOOTING



ALWAYS UNPLUG THE MACHINE BEFORE DISCONNECTING OR CONNECTING ANY WIRES OR COMPONENTS.

IF PROBLEM OCCURS

CHECK THIS

NO SPRAY	Solution tank is empty. Clogged spray tip. Pump not running. Valve on tool not operating.
PUMP DOESN'T RUN	Pump should only run while spraying. Solution path is clogged. Solution tank may be empty, or nearly empty. No power to pump. Test the on/off switch. Test the pump motor.
PUMP PULSATES	Partially clogged solution path (hose, heater, tool). Worn pressure switch in pump. Adjust pressure sensor in pump head.
LOW SUCTION	Debris plugging cleaning tool or vacuum hose. Drain gate is not completely closed, or seals are damaged. Recovery tank lid is not closed, is cracked, or gasket is damaged. Internal vacuum hose is cracked. Debris impeding air movement on vac motor impellers.
NO SUCTION	No power to motor. Test the switch. Test the vacuum motor.
LOW HEAT	Trying to spray too long. Try spraying for 10 - 12 seconds per cycle. Heat exchanger needs to be flushed. Wrong tool being used. Too much water passing through. Longer hose, or larger diameter hose, than standard.
NO HEAT	Heat switch is off. Check to see if the fuse has blown. No power in the wall outlet — check to see if breaker has tripped. No power to heat switch — check power cord for 'opens'. No power out of heat switch. Check power at Bi-metallic switch. Follow troubleshooting steps to isolate the problem. Call your distributor.

If you are unable to diagnose the problem, contact the company from whom you purchased your Cobra-H3

SPECIFICATIONS:

Rotomolded Body: Lifetime Warranty
Vacuum: 3-stage
Heat Exchanger: 1600 W (U.K.) 2000 W (E.U.)
VAC Shutoff: Ball float
Pump: 7 Bar / 100 psi, demand
Suction: 28 KPA
Weight: 34.3 Kg
Dimensions: 79 X45 X 86 cm