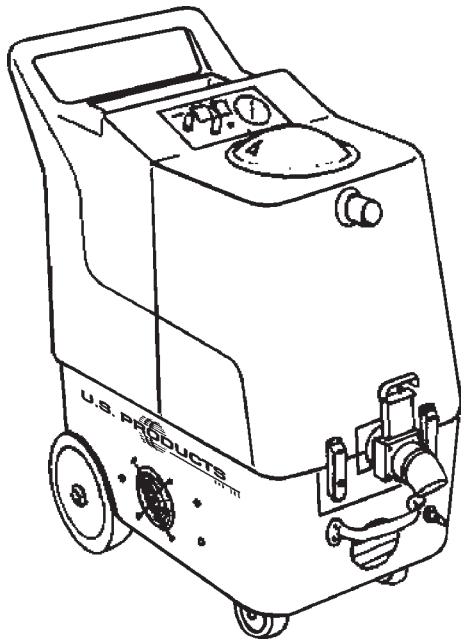




HHP-300-240 EXTRACTOR 240V



INFORMATION & OPERATING INSTRUCTIONS

**CAUTION: DO NOT OPERATE MACHINE UNTIL YOU HAVE READ
ALL SECTIONS OF THIS INSTRUCTION MANUAL**

IMPROPER USE OF THE MACHINE WILL VOID THE WARRANTY

1. Always use a defoamer when foaming occurs to prevent vacuum motor damage.
2. Before each use, remove the spray tool from the hose, and check to make sure the spray nozzles are securely tightened to the spray tool. A loose nozzle could fly off during use.
3. Keep machine from rain and snow, extremes in temperatures, and store in a heated location. Use the machine indoors. Do not use outdoors.
4. Never allow the spray to remain fixed in one spot.
5. Use approved chemicals only. NO SOLVENTS.
6. Wear gloves or use rags when removing quick disconnects to prevent burns.
7. Never use water above 54° C in the solution tank.
8. Never use the machine without the pre-filter bag installed.

IMPORTANT SAFETY INSTRUCTIONS

This machine is only suitable for commercial use, for example in hotels, schools, hospitals, factories, shops and offices other than normal residential housekeeping purposes.

When using any electrical appliance, basic precautions should always be followed, including the following:

NOTE: Read all instructions before using this machine.

WARNING!

To reduce the risk of fire, electric shock, or injury:

- Do not leave the machine unattended when it is plugged in. Unplug the unit from the outlet when not in use and before servicing.
- To avoid electric shock, do not expose to rain or snow. Store, and use, indoors.
- Do not allow to be used as a toy. Close attention is necessary when used near children.
- Use only as described in this manual. Use only the manufacturer's recommended attachments.
- Never add water over 54° C to the solution tank.
- Do not use with damaged cord or plug. If the machine is not working as it should, has been dropped, damaged, left outdoors or dropped into water, return it to a service center.
- Do not pull by the cord, use the cord as a handle, close a door on the cord, or pull the cord around sharp edges or corners. Do not run the machine over the cord. Keep the cord away from heated surfaces. To unplug, grasp the plug, not the cord.
- Do not handle the plug, the cord or the machine with wet hands.
- Extension cords must be 12/3 and no longer than 50 feet. Replace the cord or unplug immediately if the ground prong becomes damaged.
- Do not put any object into openings. Do not use with any opening blocked; keep free of dust, lint, hair, and anything that may reduce air flow.
- Keep loose clothing, hair, fingers, and all parts of body away from openings and moving parts.
- Do not pick up anything that is burning or smoking, such as cigarettes, matches, or hot ashes, or any health endangering dusts. Do not use to pick up flammable or combustible liquids such as gasoline or use in areas where they may be present.
- Turn off all controls before unplugging.
- Use extra care when cleaning on stairs.
- Connect to a properly grounded outlet only.
- Liquid ejected at the spray nozzle could be dangerous as a result of its temperature, pressure, or chemical content.

INSPECTION:

Carefully unpack and inspect your HHP-300-240 for shipping damage. Each machine is tested and inspected before shipping. Any shipping damage incurred is the responsibility of the carrier. You should notify the carrier immediately if you notice damage to the box or to the machine or parts.

CLEANING SOLUTIONS:

We recommend liquid cleaning chemicals. Powder chemicals may be used, but unless mixed very thoroughly they could cause a build-up in the pump, lines, heat exchanger and/or quick disconnects. Any problem caused by a chemical build-up is not covered by warranty. Use a neutral cleaner with a pH between 5 and 10 to avoid premature wear of the pump, seals, and/or other components. Damage caused by the use of strong chemicals is not covered by the warranty.

MAINTENANCE:

For optimum performance flush the machine with clear water at the end of each working day. Once a month, minimum, run a flushing compound through the machine to break up any mineral or chemical build-up that may have formed. The vacuum motor, pump motor, and the pump do not require any scheduled maintenance; however, the motors may require replacement brushes after 1000 - 1500 hours, and the pump and bypass valve may require rebuild kits after 1000 - 1500 hours, typically (refer to machine part list for numbers). Clean the body with an all-purpose detergent, and protect it with an automobile interior polish. Lubricate the wheels, castors, and quick disconnects with an all purpose silicone spray.

PARTS AND SERVICE:

Repairs, when required, should be performed by your authorized distributor who maintains an inventory of original replacement parts and accessories. Call the distributor from whom you purchased this machine if you need parts and service. Be sure to specify the machine model. Have your serial number handy.

Serial Number: _____

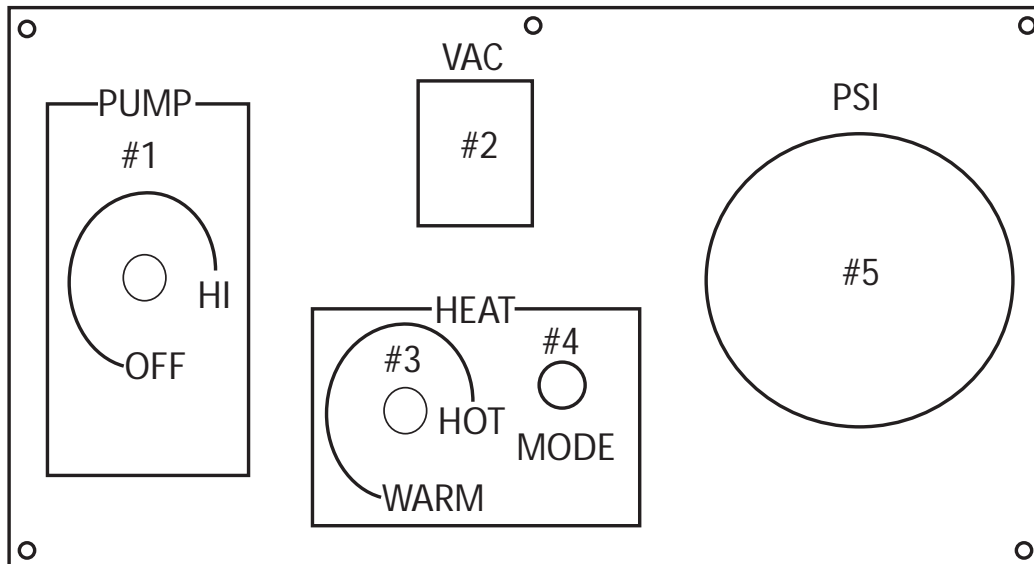
Model: HHP-300-240

Purchase Date: _____

Write the name and phone number of your distributor:

(and be sure to register your purchase to activate your warranty)

SWITCH PLATE



PUMP DIAL (1):

This dial controls motor speed and pump pressure. Adjust the dial clockwise to increase pressure and counterclockwise to decrease pressure or turn off pump. The pump runs off of cord #1.

VACUUM SWITCH (2):

This switch will illuminate when the vacuum motor is on. The vacuum motor runs off of cord #1.

HEAT CONTROL (3):

This dial controls the water temperature. Turn it clockwise to increase water temperature and counterclockwise to decrease temperature.

HEAT MODE LIGHT (4):

This light will only illuminate when the heater is heating and will turn off when it reaches operating temperature. During normal operation, the "MODE" light will be on most of the time.

PRESSURE GAUGE (6):

Indicates pump spraying pressure (the air bubble inside the gauge is normal). Do not operate the machine if the with the needle goes above 325 psi.

SET-UP and OPERATION:

Fill the holding tank with clear water and the detergent of your choice. Mix well. Although this machine is designed to supply instant hot water, the addition of warm water to the holding tank would increase heater efficiency. Never use water above 54° C in the solution tank.

1. Plug in cord #1 (this cord runs the pump and vacuum). Attach the priming hose to the machine and place the open end into the tank (see Figure #1).
2. Turn on the pump (turn pump pressure dial all the way clockwise) and let it run until the pump is fully primed (approximately 30 seconds to 1 minute - older pumps may take longer). Turn off the pump and disconnect the priming hose. Attach the cleaning hose and tool.
3. Turn on the pump and spray through the cleaning tool for a few seconds to fill the lines with solution.
4. Plug in cord #2 (indicated by the red "H" on the back of the machine). Wait until the red mode light goes out (approximately 2 minutes) for the heat exchanger to reach operating temperature. You may now begin cleaning. **NOTE:** During normal operation, the red light will be on most of the time.

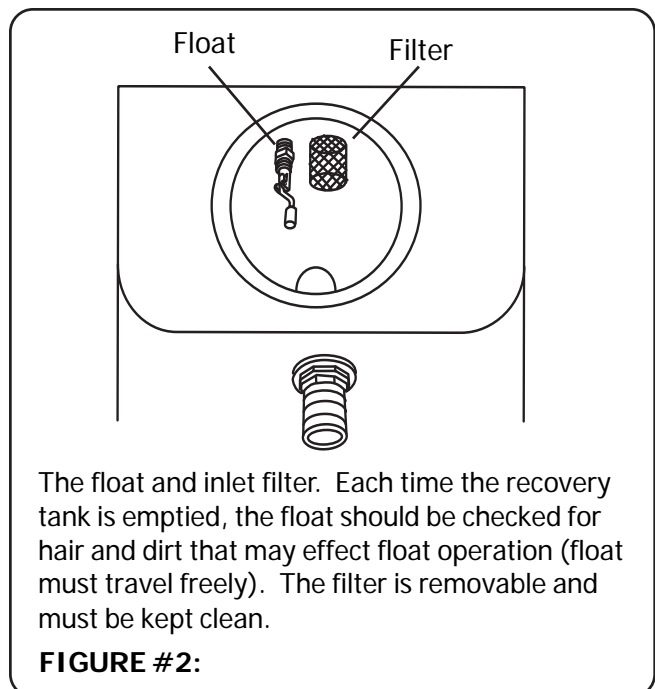
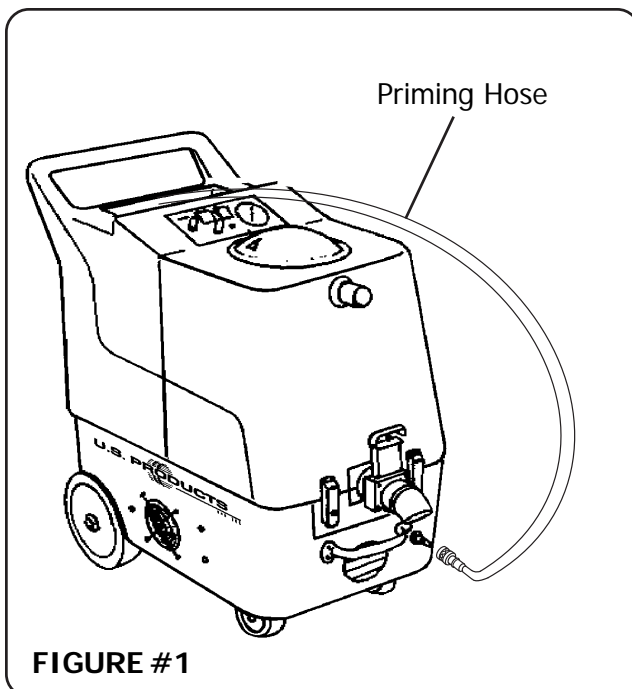
AUTO VACUUM SHUTOFF:

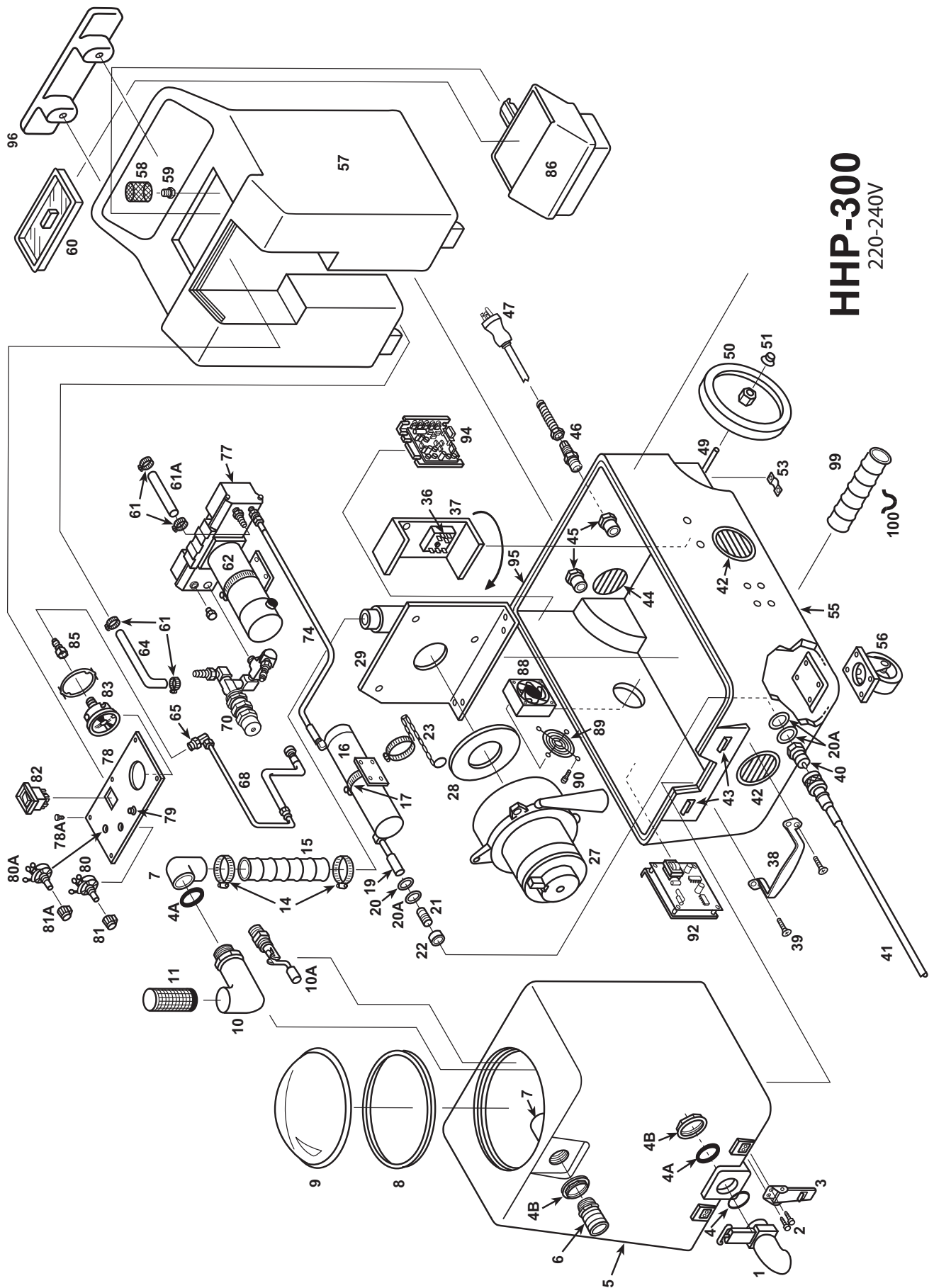
When the recovery tank is full, the float system will shut off the vacuum motor and prevent the machine from overflowing. The float will not work in foam. Always use a defoamer to prevent overflow. Once the vacuum motor shuts off, the vac switch (#2) must be turned off, the recovery tank emptied, and then the vacuum switch turned back on (up position) to get the vacuum motor started again.

CAUTION: Always make sure the float is clean and travels freely before turning on the machine. A float that is stuck will cause the vacuum motor to suck in water, resulting in vac motor damage.

PUMP PRESSURE:

Make sure the cleaning tool is spraying when adjusting the pressure, otherwise the pressure reading will be inaccurate.





HHP-300

220-240V

HHP-300

240V PART LIST

| ITEM | PART# | DESCRIPTION | ITEM | PART# | DESCRIPTION |
|-------------|--------------|---|-------------|--------------|--------------------------------------|
| 1 | FP231 | Drain Gate Assembly | 60 | 901 | Lid, Holding Tank |
| 2 | 21 | Screw, Button Head 10/32-5/8" | 61 | 166 | Hose Clamp |
| 3 | 908 | Latch | 61A | FP170 | Hose, 1/2" x 18", Pump Inlet |
| 4 | 187 | O-Ring, Small | 62 | 949B | Motor, 300 PSI Pump |
| 4A | 187B | Washer, rubber | 64 | FP169 | Hose, 3/8" x 15", Pump, Bypass |
| 4B | 185 | Nut, 1-1/2" | 65 | 220 | Quick Disconnect, Open, 1/4 p.t. |
| 5 | V-1 | Vacuum Tank, HHP | 68 | FP168 | Hose, Pump to Gauge, Complete |
| 6 | 907 | Hose Barb, 1-1/2" | 70 | 945 | Bypass Valve, Complete |
| 7 | 922 | PVC Elbow, 1-1/2" | 77 | FP167 | Pump, complete, no motor |
| 8 | 2009 | Gasket, Vacuum Dome | 78 | 920 | Switch Plate (240V) |
| 9 | FP201 | Vacuum Dome | 78A | 28 | Screw, #4 x 3/8" |
| 10 | FP216 | PVC Elbow Assembly | 79 | 228 | Light, Red, Small |
| 10A | 2026 | Float, Vacuum Shut-Off, Electronic | 80 | 255 | Potentiometer, Heat Control |
| 11 | 929 | Filter, Vacuum, Inlet | 80A | FP200C | Potentiometer, w/Cable, Pump Control |
| 14 | 156 | Hose Clamp, (size 28) | 81 | 248 | Knob, Red, Heat |
| 15 | 430B | Hose, Vacuum, Rubber, 2" x 20" | 81A | 249 | Knob, Blue, Pump |
| 16 | FP159B | Heat Exchanger, Complete | 82 | 48G | Switch, Rocker, Vacuum |
| 17 | 76A | Hose Clamp, (size 36) | 83 | 951A | Gauge, PSI pressure, 2-1/2" |
| 19 | FP164 | Hose Assy, Braided, Heater Outlet | 85 | 219 | Quick Disconnect, Male, 1/4 p.t. |
| 20 | 31 | Washer, Brass | 86 | F-1 | Funnel, Black |
| 20A | 115 | Washer, Fiber | 88 | 2018 | Fan, Cooling |
| 21 | 92A | Nipple, S/S, 1/4 p.t. | 89 | 2015 | Guard, Fan |
| 22 | 116A | Bushing, Fiber | 90 | 2B1 | Screw, 6/32 x 2"-1/4" |
| 23 | 934 | Chain, 9.5" | 92 | FP225A | Vacuum Board, Complete |
| 27 | FP385 | Vacuum Motor, 3-Stage w/Connectors | 94 | FP316 | Motor Speed Board, w/Resistor (Pump) |
| 28 | 959 | Gasket, Vacuum Motor | 95 | FP228A | Gasket, Base |
| 29 | 926 | Vacuum Manifold | 96 | CWBLK | Cord Wrap, Black |
| 36 | see Misc. | Thermistor Control with Potentiometer** | 99 | 430 | Hose, Exhaust, 2" x 12" |
| 37 | 918 | Heat Sink Plate | 100 | 928A | Bracket, Exhaust Hose |
| 38 | 2010A | Handle, Chrome | | | |
| 39 | 193 | Screw, flathead, 1/4 | | | |
| 40 | 45 | Quick Disconnect, 1/4 p.t. | | | |
| 41 | SYP1 | Priming Hose | | | |
| 42 | 928 | Louver, 3" | | | |
| 43 | 909A | Latch Strike for Latch, S/S | | | |
| 44 | 459 | Louver, 2-1/2" (includes screws) | | | |
| 45 | 937 | Reducer, PVC | | | |
| 46 | 184 | Cord Retainer | | | |
| 47 | 2019 | Power Cord, Yellow, 25' | | | |
| 49 | 910-15.56 | Axle, 1/2" x 17-1/2" | | | |
| 50 | 2003 | Wheel, 8" | | | |
| 51 | 27A | Axle Cap, Black | | | |
| 53 | 180 | Axle Bracket | | | |
| 55 | BBKL-1 | Base, HHP | | | |
| 56 | 905 | Castor, 4" | | | |
| 57 | T-1 | Holding Tank, HHP | | | |
| 58 | 207A | Filter, Pump, Inlet | | | |
| 59 | 92B | Nipple, PVC, 1/2 n.p.t. | | | |

MISCELLANEOUS ASSEMBLIES/PARTS

| | |
|----------|--|
| 291 | Bypass Valve Rebuild Kit |
| 229 | Valve/O-Ring Kit, Pump |
| 250 | Piston Seal Kit, Pump |
| FP212A | Pump & Motor Complete (240V) |
| 242 | Brush for Pump Motor (Order 2) |
| 950A | Cam/Bearing Assembly (Pump) |
| **FP194E | Thermistor Control Kit with Potentiometer & Probe (240V) |
| FP200C | Potentiometer with Cable (pump speed) |
| FP2008 | Vacuum Dome w/Gasket |

(NOTE: Items in kits not sold separately.)

TROUBLE SHOOTING:

| <u>IF THIS OCCURS</u> | <u>CHECK THIS</u> |
|------------------------------|--|
| NO SPRAY | Solution tank is empty. Clogged spray tip. Pump not running or not primed. Valve on wand not operating. |
| PUMP DOES NOT RUN | Check the brushes in the pump motor. Replace if necessary. No power to motor. Test the Motor Speed Control Circuit Board and potentiometer. |
| LOW SUCTION | Debris is plugging cleaning tool or vacuum hose. Drain gate is not completely closed, or seals are damaged. Vacuum dome is not seated or is damaged. |
| NO SUCTION | No power to vac motor. Test the Electronic Float. Test the switch. Test the vacuum motor. Test the Vacuum Circuit Board. |
| LOW HEAT | Spraying too long. Try spraying for 12-15 seconds per cycle. Heat exchanger needs to be flushed. Wrong tool being used. Too much water passing through. Longer hose or larger diameter hose, than standard |
| NO HEAT | Heat is not turned on. No power in the wall outlet - check to see if the breaker has tripped. Call your distributor for additional help. |

SPECIFICATIONS:

Rotomolded Body: Lifetime Warranty
Vacuum: 7.2", 3-stage
VAC Shutoff: Electronic
Pump: Positive displacement, fully adjustable 0-300 psi
Waterlift: 140"
Heat: Adjustable to 212° F
Heater: 2000 Watts
Wand: Stainless steel, double bend, twin tip
Weight: 92 lbs.
Dimensions: 26.5H x 18W x 28.75L (inches)



208-772-0573 · 800-257-7982 · FAX: 208-772-0577
VISIT US AT: <http://www.usproducts.com>