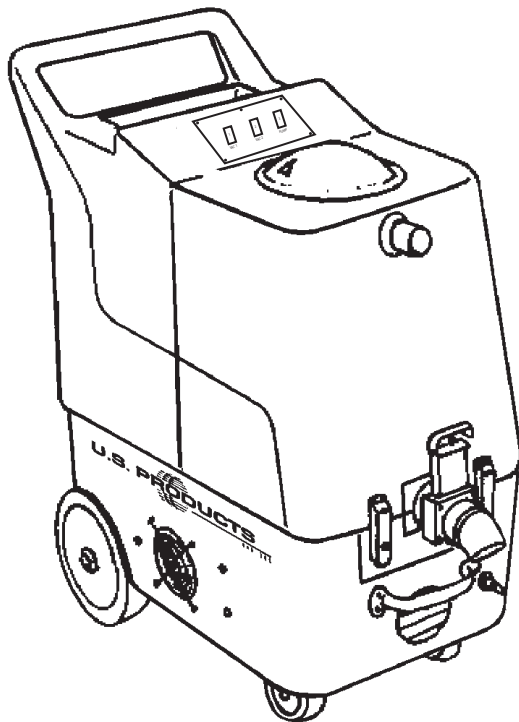




HP310-C EXTRACTOR 120V



INFORMATION & OPERATING INSTRUCTIONS

**DO NOT OPERATE MACHINE UNTIL YOU HAVE READ
ALL SECTIONS OF THIS INSTRUCTIONS**

IMPROPER USE OF THE MACHINE WILL VOID THE WARRANTY

1. Always use a defoamer when foaming occurs to prevent vacuum motor damage.
2. Keep machine from rain and snow, extremes in temperatures, and store in a heated location. Use the machine indoors. Do not use outdoors.
3. Do not let the pump run dry.
4. Use approved chemicals only. NO SOLVENTS.
5. Never use water above 130° F/54° C in the solution tank.

IMPORTANT SAFETY INSTRUCTIONS

This machine is only suitable for commercial use, for example in hotels, schools, hospitals, factories, shops and offices other than normal residential housekeeping purposes.

When using any electrical appliance, basic precautions should always be followed, including the following:

NOTE: Read all instructions before using this machine.

WARNING!

To reduce the risk of fire, electric shock, or injury:

- Do not leave the machine unattended when it is plugged in. Unplug the unit from the outlet when not in use and before servicing.
- To avoid electric shock, do not expose to rain or snow. Store, and use, indoors.
- Do not allow to be used as a toy. Close attention is necessary when used near children.
- Use only as described in this manual. Use only the manufacturer's recommended attachments.
- Never add water over 130° F/54° C to the solution tank.
- Do not use with damaged cord or plug. If the machine is not working as it should, has been dropped, damaged, left outdoors or dropped into water, return it to a service center.
- Do not pull by the cord, use the cord as a handle, close a door on the cord, or pull the cord around sharp edges or corners. Do not run the machine over the cord. Keep the cord away from heated surfaces. To unplug, grasp the plug, not the cord.
- Do not handle the plug, the cord, or the machine with wet hands.
- Extension cords must be 12/3 and no longer than 50 feet. Replace the cord or unplug immediately if the ground prong becomes damaged.
- Do not put any object into openings. Do not use with any opening blocked; keep free of dust, lint, hair, and anything that may reduce air flow.
- Keep loose clothing, hair, fingers, and all parts of body away from openings and moving parts.
- Do not pick up anything that is burning or smoking, such as cigarettes, matches, or hot ashes, or any health endangering dusts. Do not use to pick up flammable or combustible liquids such as gasoline or use in areas where they may be present.
- Turn off all controls before unplugging.
- Use extra care when cleaning on stairs.
- Connect to a properly grounded outlet only.
- Liquid ejected at the spray nozzle could be dangerous as a result of its temperature, pressure, or chemical content.

INSPECTION:

Carefully unpack and inspect your HP310-C for shipping damage. Each machine is tested and inspected before shipping. Any shipping damage incurred is the responsibility of the carrier. You should notify the carrier immediately if you notice damage to the box or to the machine or parts.

CLEANING SOLUTIONS:

We recommend liquid cleaning chemicals, such as our Magic Fabric Cleaner. Powder chemicals may be used, but unless mixed very thoroughly they could cause a build-up in the pump, lines, or quick disconnects. Any problem caused by a chemical build-up is not covered by warranty. Use a neutral cleaner with a pH between 6 and 9 to avoid premature wear of the pump, seals, and/or other components. Damage caused by the use of strong chemicals is not covered by the warranty.

MAINTENANCE:

For optimum performance flush the machine with clear water at the end of each working day. Once a month, minimum, run a flushing compound through the machine to break up any mineral or chemical build-up that may have formed. U.S. Products' "X-1500" is recommended. The vacuum motors and the pump do not require any scheduled maintenance; however, the vac motors may require replacement brushes after 1000 - 1500 hours. Clean the body with an all-purpose detergent, and protect it with an automobile interior polish. Lubricate the wheels, castors, and quick disconnects with an all purpose silicone spray.

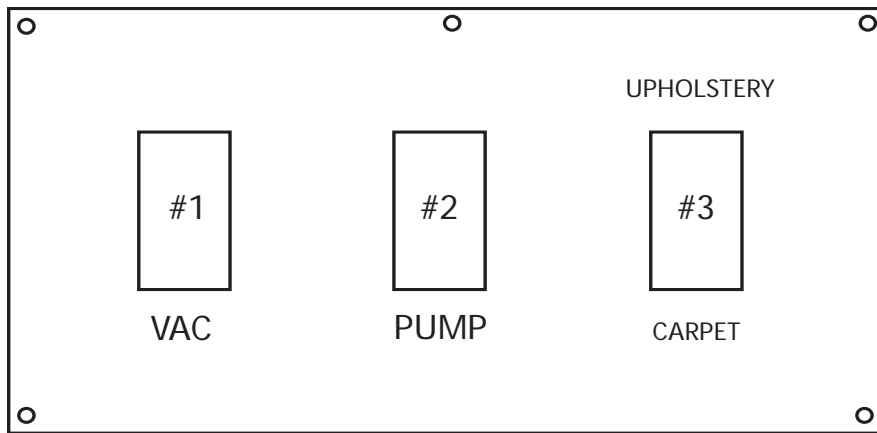
(and be sure to mail your warranty card)

Serial Number: _____

Model: HP310-C

Purchase Date:_____

Write the name and phone number of your distributor:



VACUUM SWITCH (1):

This switch turns on the vacuum motor. The switch illuminates when it is turned on.

PUMP SWITCH (2):

This switch turns on the pump. The switch illuminates when turned on.

UPHOLSTERY/CARPET SWITCH (3):

This switch sets the pump for low (upholstery) pressure or for high (carpet) pressure. This switch does not turn the pump on or off.

SET-UP:

Fill the holding tank with clear water and the detergent of your choice. Mix well. Although this machine is designed to supply instant hot water, the addition of warm water (not above 130° F/54° C) to the holding tank would increase heater efficiency.

1. Plug in cord. (This cord runs the pump and vacuums).
2. Turn on the pump and spray through the cleaning tool for a few seconds to fill the lines with solution.

BALL FLOAT VAC SHUTOFF:

When the recovery tank is full, the float system will shut off the incoming air flow and prevent water from entering the vacuum motors. The float may not work properly if the float ball cage is clogged or if there is foam in the tank. Foam may not lift the ball float.

CAUTION: To avoid vac motor damage, always make sure the float cage is clean and the ball travels freely before turning on the machine, and use a defoamer whenever foam is present.

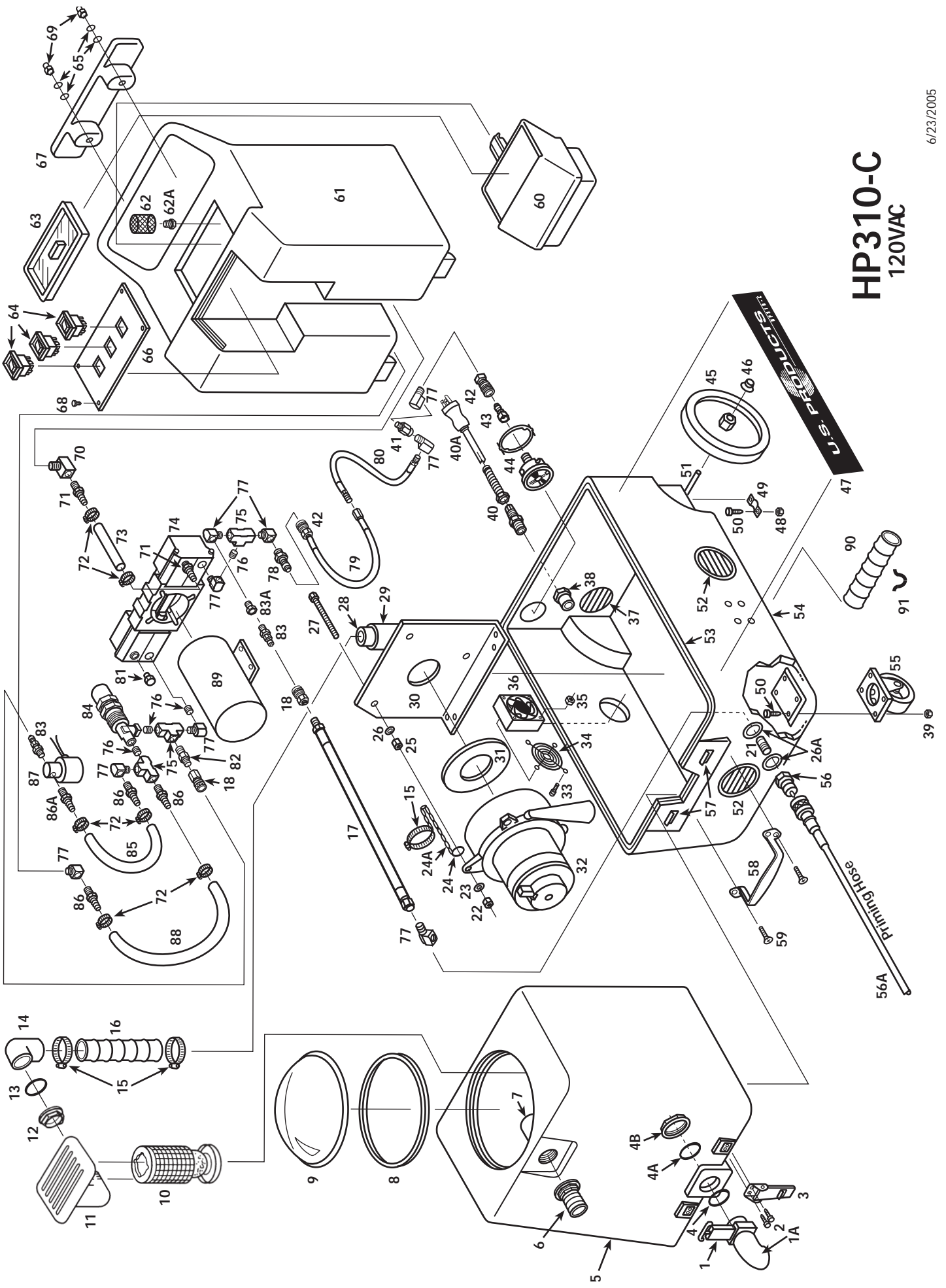
HP310-C 120V PARTS LIST

<u>ITEM #</u>	<u>PART #</u>	<u>DESCRIPTION</u>	<u>ITEM #</u>	<u>PART #</u>	<u>DESCRIPTION</u>
#1	903	Drain Gate (see Misc.)*	#61	T-1	Holding Tank, HP310-C
#2	21	Screw, Button Head, 10-32 x 5/8"	#62	207	Filter, 40 Mesh, S/S
#3	908	Latch	#63	901	Lid, Holding Tank
#4	187	O-Ring, Small	#64	FP311	Switch, Pump & Vacuum
#4A	190	O-Ring, Large	#65	203	Washer, Nylon
#4B	185	Nut, 1-1/2"	#66	977B	Switch Plate
#5	V-1	Vacuum Tank, HHP	#67	CWBLK	Cord Wrap, Black
#6	907	Hose Barb, 1-1/2"	#68	28	Screw, #4 x 3/8"
#7	922	PVC Elbow, 1-1/2"	#69	260	Nut, Acorn, 3/8"
#8	2009	Gasket (Vacuum Dome)	#70	216	Elbow, Brass
#9	FP201	Vacuum Dome	#71	165	Hose Barb, 1/2" Hose x 1/2 p.t., Brass
#10	924	Float, Ball & Cage	#72	166	Hose Clamp
#11	FP193	Ball Float Assembly, Complete	#73	946A	Hose, Pump Inlet, 1/2" X 14"
#12	185	Nut, 1-1/2"	#74	950	Pump, Raw (see Misc.)
#13	190	O-Ring, Large	#75	168	"T", brass
#14	922	Elbow, PVC, 1-1/2"	#76	92A	Nipple, S/S, 1/4 p.t.
#15	156	Hose Clamp (size 28)	#77	91	Elbow, Brass
#16	FP171	Hose, Vacuum, Rubber, 2" X 20"	#78	221	Quick Disconnect, Male, Open, 1/4 p.t.
#17	982	Hose, 41" w/Fittings	#79	944	Hose, Pulsation Dampening
#18	222	Quick Disconnect, Open, 1/8 p.t.	#80	FP477	Hose, 24" with Swages
#21	92A	Nipple, S/S, 1/4 p.t.	#81	211	Plug, Brass
#22	7	Lock Nut, 5/16"	#82	105	Reducer Nipple, Brass, 1/4 x 1/8 p.t.
#23	15	Washer, 5/16"	#83	223	Quick Disconnect, Male, 1/8 p.t.
#24	194	Split Ring	#83A	97	Bushing, Brass
#24A	FP233A	Chain Assembly, 9.5"	#84	945	Bypass Valve
#25	320AB	Nut, 5/16"	#85	925	Hose, 3/8" X 8"
#26	34	Washer, 5/16"	#86	164	Hose Barb, 3/8" Hose x 1/4 p.t., Brass
#26A	31	Washer, Brass	#86A	208	Hose Barb, 3/8" Hose x 1/8 p.t., Brass
#27	179	Bolt, 5/16" X 4"	#87	2062	Solenoid (120V)
#28	935	Sleeve, PVC, 3"	#88	925	Hose, Pump Bypass, 3/8" x 14"
#29	921	Elbow, PVC	#89	2060	Motor, for Pump (AC, 120V)
#30	926	Vacuum Manifold	#90	FP171B	Hose, Exhaust, 2" x 12"
#31	959	Gasket (Vacuum Motor)	#91	928A	Bracket, Exhaust Hose
#32	FP323	Vacuum Motor, 3-Stage, w/Connectors			
#33	2B1	Screw, 6-32" X 2-1/4"			
#34	2015	Guard, Fan			
#35	16	Lock Nut, 6-32"			
#36	2014	Fan, Cooling			
#37	459	Louver, 2-1/2" (includes screws)			
#38	937	Reducer, PVC	291		Bypass Rebuild Kit
#39	8	Lock Nut, 1/4-20	229		Valve/O-Ring Kit
#40	184	Cord Retainer	FP236		Pump Complete (no motor or solenoid)
#40A	495A	Power Cord, Yellow, 25'	FP236A		Pump Complete with Solenoid
#41	210	Snubber	FP236B		Pump and Motor Complete with Solenoid
#42	220	Quick Disconnect, Female, Open, 1/4 p.t.	950A		Bearing/Cam Assembly (for pump)
#43	219	Quick Disconnect, Male, Open, 1/4 p.t.	*FP231		Drain Gate Complete with O-Rings, Nut & Spout
#44	951	Pressure Gauge, 2-1/2"			
#45	2003	Wheel, 8"			
#46	27A	Axle Cap, Black			
#47	4335	Label, HP310-C			
#48	8	Lock Nut, 1/4-20			
#49	180	Axle Bracket			
#50	5	Bolt, 1/4-20 X 3/4"			
#51	910	Axle, 1/2" x 17-1/2"			
#52	928	Louver, 3" (includes screws)			
#53	FP228A	Gasket, Base			
#54	B-1	Base, HP310-C			
#55	905	Castor, Swivel, 4"			
#56	45	Quick Disconnect, Male, 1/4 p.t.			
#57	909A	Latch Strike for Latch, S/S			
#58	2010	Handle, Chrome			
#59	193	Screw, 1/4-20 x 3/4", Flathead			
#60	FP204	Funnel, Black			

MISCELLANEOUS ASSEMBLIES/PARTS

(NOTE: Items in kits are not sold separately.)

6-24-2005



HP310-C 120VAC

TROUBLE SHOOTING:

IF THIS OCCURS

CHECK THIS

NO SPRAY	Solution tank is empty. Clogged spray tip. Pump not running. Valve on wand not operating.
PUMP DOES NOT RUN	No power to pump. Test the switch. Test the pump motor.
LOW SUCTION	Debris plugging cleaning tool or vacuum hose. Drain gate is not completely closed, or seals are damaged. Vacuum lid is loose or gasket is damaged.
NO SUCTION	No power to vacuum motor. Test the switch. Test the vacuum motor.

SPECIFICATIONS:

Rotomolded Body: Lifetime Warranty

Vacuum: Twin 2-stage 5.7" motors

VAC Shutoff: Ball float

Pump: Positive displacement 300 psi for carpet 75 psi for upholstery

Waterlift: 140"

Wand: Stainless steel, double bend, twin tip

Weight: 93 lbs.

Dimensions: 26.5H x 18W x 28.75L (inches)

HP310-C EXTRACTOR 120V

NOTES:



208-772-0573 · 800-257-7982 · FAX: 208-772-0577

Coeur d'Alene, Idaho

VISIT US AT: <http://www.usproducts.com>