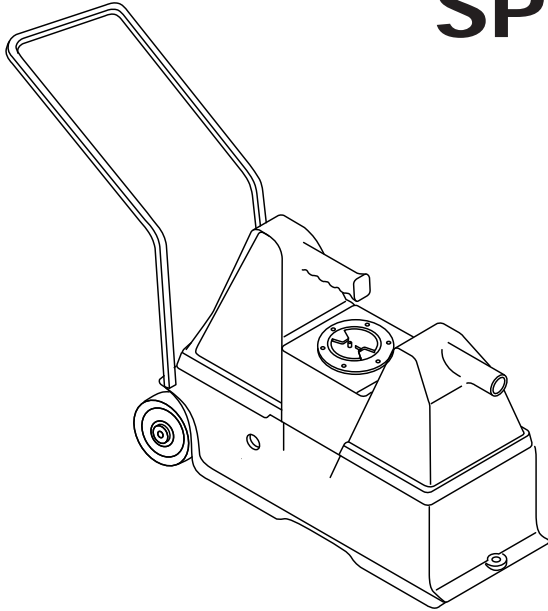
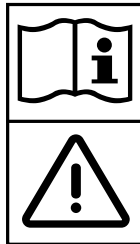




# TRIPLE-PLAY SPOTTER 120V



## INFORMATION & OPERATING INSTRUCTIONS



**CAUTION: DO NOT OPERATE MACHINE UNTIL YOU HAVE READ ALL SECTIONS OF THIS INSTRUCTION MANUAL**

### IMPROPER USE OF THE MACHINE WILL VOID THE WARRANTY

1. Always use a defoamer when foaming occurs to prevent vacuum motor damage.
2. Keep machine from rain and snow, extremes in temperatures, and store in a heated location. Use the machine indoors. Do not use outdoors.
3. Do not let the pump run dry.
4. Use approved chemicals only. NO SOLVENTS.
5. Keep all filters clean. Do not operate the machine if the filters are dirty.
6. Never use water above 130° F/54° C in the solution tank.

# IMPORTANT SAFETY INSTRUCTIONS

This machine is only suitable for commercial use, for example in hotels, schools, hospitals, factories, shops and offices other than normal residential housekeeping purposes. Do not use the Triple Play Spotter to clean large carpets.

When using any electrical appliance, basic precautions should always be followed, including the following:

**NOTE:** Read all instructions before using this machine.

## **WARNING!**

To reduce the risk of fire, electric shock, or injury:

- Do not leave the machine unattended when it is plugged in. Unplug the unit from the outlet when not in use and before servicing.
- To avoid electric shock, do not expose to rain or snow. Store, and use, indoors.
- Do not allow to be used as a toy. Close attention is necessary when used near children.
- Use only as described in this manual. Use only the manufacturer's recommended attachments.
- Never add water over 130° F/54° C to the solution tank.
- Do not use with damaged cord or plug. If the machine is not working as it should, has been dropped, damaged, left outdoors or dropped into water, return it to a service center.
- Do not pull by the cord, use the cord as a handle, close a door on the cord, or pull the cord around sharp edges or corners. Do not run the machine over the cord. Keep the cord away from heated surfaces. To unplug, grasp the plug, not the cord.
- Do not handle the plug, the cord, or the machine with wet hands.
- Extension cords must be 18/3 and no longer than 50 feet. Replace the cord or unplug immediately if the ground prong or any other part of the cord becomes damaged.
- Do not put any object into openings. Do not use with any opening blocked; keep free of dust, lint, hair, and anything that may reduce air flow.
- Keep loose clothing, hair, fingers, and all parts of body away from openings and moving parts.
- Do not pick up anything that is burning or smoking, such as cigarettes, matches, or hot ashes, or any health endangering dusts. Do not use to pick up flammable or combustible liquids such as gasoline or use in areas where they may be present.
- Turn off all controls before unplugging.
- Use extra care when cleaning on stairs.
- Connect to a properly grounded outlet only.
- Liquid ejected at the spray nozzle could be dangerous as a result of its temperature, pressure, or chemical content.
- Always read chemical MSDS sheets before use.

**INSPECTION:**

Carefully unpack and inspect the Triple Play Spotter for shipping damage. Each unit is tested and inspected before shipment. Any damage incurred during shipping is the responsibility of the carrier, whom you should notify immediately.

**CLEANING SOLUTIONS:**

Use only approved chemicals. Liquid cleaning detergents are recommended; powdered chemicals may be used, but unless mixed thoroughly, they may cause a build-up in the pump, the lines, the quick couplers, etc. High acid concentration, as in citrus based cleaners, or strong detergent preparations, can damage the pump seals and/or other fittings, and are expressly warned against. A pH of between 7 and 9 is recommended. Damage caused by either strong acid or strong detergent will void the warranty.

**MAINTENANCE:**

Before each job, inspect the filters and gaskets to make sure they are clean and ready for use. The pump and vacuum do not require any maintenance. Clean the body with an all purpose detergent, and protect it with a common auto interior protectant. Lubricate the wheels and latches as needed.

**NOTE: This machine is only suitable for commercial use, for example in hotels, schools, hospitals, factories, shops and offices other than normal residential house-keeping purposes. Record the serial number and model of your new extractor here:**

**Serial Number:** \_\_\_\_\_ **Model:** Triple-Play Spotter-B

**Purchase Date:** \_\_\_\_\_

**Write the name and phone number of your distributor:** \_\_\_\_\_

\_\_\_\_\_

\_\_\_\_\_

(and be sure to register your warranty )

## **FEATURES:**

### **Solution Tanks:**

The Triple-Play Spotter has the unique design feature of having two 1-gallon solution tanks. This allows you to have cleaning solution in one tank and clean water for rinsing in the other tank. Simply turn the valve on the machine to switch from one tank to the other. There is no need to empty your detergent tank, clean it, and refill it with water for the rinse cycle.

### **Recovery Tank:**

The recovery tank holds more liquid than the total of both the holding tanks, so you can easily clean an area and rinse it without the need to empty your recovery tank. When you refill your holding tanks, simply remove the vacuum hose from the recovery tank and dump the water out through the vacuum inlet spout.

**Caution:** To prevent damage to the vacuum motor, do not let the water level in the recovery tank exceed 3/4 full.

**Caution:** When moving the machine with water in any of the tanks, do not tip the machine past a 30° angle to avoid spilling water into the vacuum chamber and to avoid damaging the motor.

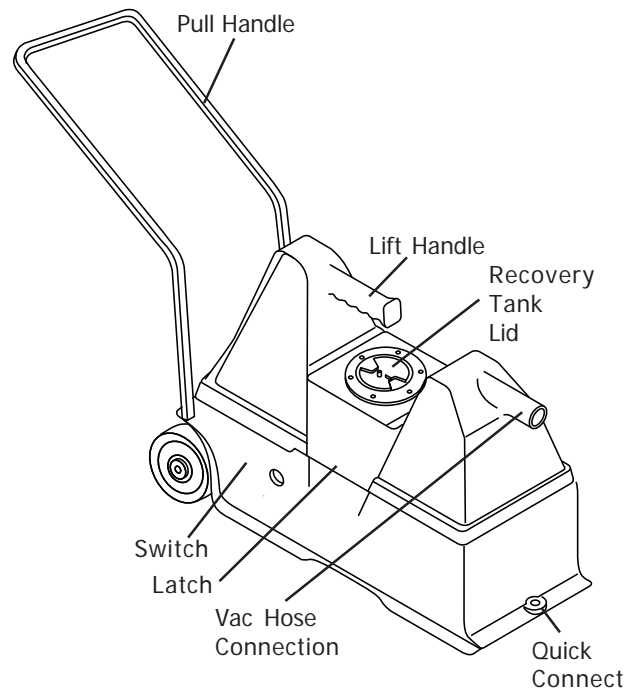
## **SET-UP:**

1. Open the latches and remove the recovery tank from the machine.
2. Fill the solution tanks -- one tank will hold your diluted cleaning chemical and the second tank will hold clean water.
3. Place the recovery tank back onto the base, and secure the latches. Make sure the screw-in access lid is in place and tight.
4. Attach the vacuum hose to the vacuum inlet on the recovery tank.
5. Connect the solution line to the quick coupling on the rear of the Spotter base.
6. Attach the cleaning tool to the 10' Vacuum Hose/Solution Hose assembly.
7. Turn the knob on the 3-way switch to the desired tank.
8. Turn ON the rocker switch. This will start the pump and the vacuum.
9. Press the lever on the tool to begin spraying.

**NOTE:** It may take a few seconds for the solution to reach the spray tip. The tool will automatically suck up the sprayed solution as the tool passes over the wet area.

**NOTE:** When switching from one tank to the other tank, it may take a few seconds of spraying for the solution in the selected tank to reach the spray tip.

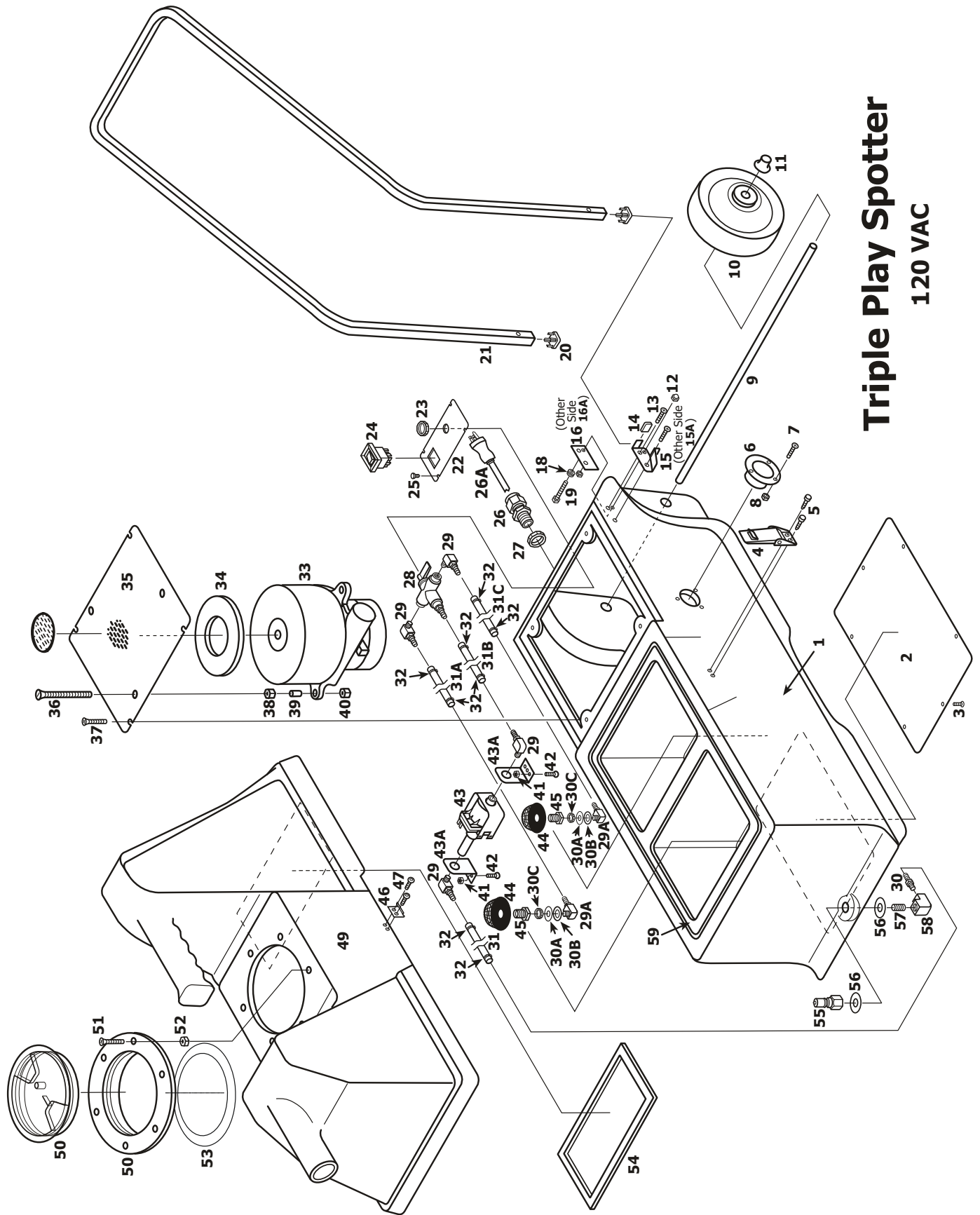
10. When finished with the job, disconnect the hoses from the Spotter, remove and empty the recovery tank, then dump the water out of the tanks and clean them.



# **TRIPLE-PLAY SPOTTER 120V**

## **SPECIFICATIONS:**

<b>Solution Tank:</b>	<b>1 gallon - 3.785 liters</b>
<b>Rinse Tank:</b>	<b>1 gallon - 3.785 liters</b>
<b>Recovery Tank:</b>	<b>2.5 gallons - 9.5 liters</b>
<b>Pump:</b>	<b>55 PSI</b>
<b>Tangential Vacuum:</b>	<b>90-inch lift/97 CFM</b>
<b>Power Cord:</b>	<b>25-foot length 18/3 w/hospital grade plug</b>
<b>Transport:</b>	<b>5-inch wheels w/folding handle</b>
<b>Weight:</b>	<b>29 lbs.</b>
<b>Dimensions:</b>	<b>25" L x 10.5" W x 19" H</b>
<b>Warranty:</b>	<b>1-year limited</b>
<b>Optional Equipment:</b>	<b>Lightweight floor wand</b>



# Triple Play Spotter

120 VAC

# TRIPLE-PLAY SPOTTER 120V

## PARTS LIST

ITEM	PART	DESCRIPTION	ITEM	PART	DESCRIPTION
1	HT-10	Base/Holding Tanks	41	17	Lock Nut, 10-32
2	986	Bottom Cover Plate	42	21	Bolt, 10-32 x 5/8", Button Head
3	267	Screw, #6 x 1/2"	43	989	Pump, 55 psi
4#	56471194	Latch Assembly	43A	990	Bracket, Pump
5	1117	Screw, 8-32 x 1/4"	44	999	Filter, Mesh 40, S/S
6	440	Flange, Exhaust	45	97	Bushing, Brass
7	22	Screw, 10-32 x 5/8" F.H.	46	909A	Latch Strike, for Latch, S/S
8	17	Lock Nut, 10-32	47#	325C	Bolt, 8-32 x 7/8"
9#	910-1125	Axle Rod, 11 1/2"	48	17	Lock Nut, 10-32
10#	39857A	Wheel, 5"	49	VT-8	Vac Tank
11	27A	Axle Cap, Black	50	983	Lid, Access, with Ring
12	375	Acorn Nut	51#	21C	Screw, 8-32 x 7/8"
13	1109	Screw, 10-32 x 3/4", S/S	52	325	Lock Nut, 8-32, S/S
14	997	Cap, Plastic	53	1074B	Gasket, Access Lid
15	993	Handle Bracket Set, Left Side	54	980	Gasket, Vacuum Tank
15A	992	Handle Bracket Set, Right Side	55	374	Quick Disconnect, 1/8 p.t.
16	993	Handle Bracket Set, Left Side	56	306AB	Washer, Brass
16A	992	Handle Bracket Set, Right Side	57	383	Nipple, 1/8 p.t.
18	398A	Washer, 1/4", S/S	58	90	Elbow, Brass
19	375A	Bolt, Shoulder 1/4" x 1/2"	59	981	Gasket, Tank
20	389	Plug, Square, Heavy Duty			
21	991	Handle			
22	987	Switch Plate			
23	N/A	Nut, Part of Valve			
24#	FP578	Switch, Rocker w/Cover			
25	154	Screw, #4 x 1/4"			
26	230	Cord Retainer, Water-tight			
26A	984	Power Cord, 25', Black			
27	230A	Nut, Plastic			
28#	988B	Valve, 3-way			
29	1000	Elbow, 90 Degrees, & Hose Barb, Nylon			
29A#	56755726	Elbow & Hose Barb			
30	384	Hose Barb, Brass, 1/4" Hose x 1/8 p.t.			
30A	265	Washer, Rubber			
30B	357	Washer, Flat, S/S			
30C	304AB	Nut, Brass, 1/8, p.t.			
31	996	Hose, 1/4", I.D., Braided, 16"			
31A	996	Hose, 1/4", I.D., Braided, 26"			
31B	996	Hose, 1/4", I.D., Braided, 10-1/2"			
31C	996	Hose, 1/4", I.D., Braided, 22"			
32	385	Hose Clamp			
33	FP324	Vacuum Motor, 2-Stage, w/Gasket & Connectors			
34	2013	Gasket, Vacuum			
35	994	Plate, Vacuum Mounting			
36	386	Bolt, 10-32 x 4", F.H.			
37	22	Bolt, 10-32 x 5/8", F.H.			
38	17	Lock Nut, 10-32			
39#	416	Tubing, teflon 3/16" x .03			

# = Revised or new since last update

# TRIPLE-PLAY SPOTTER 120V

NOTES: