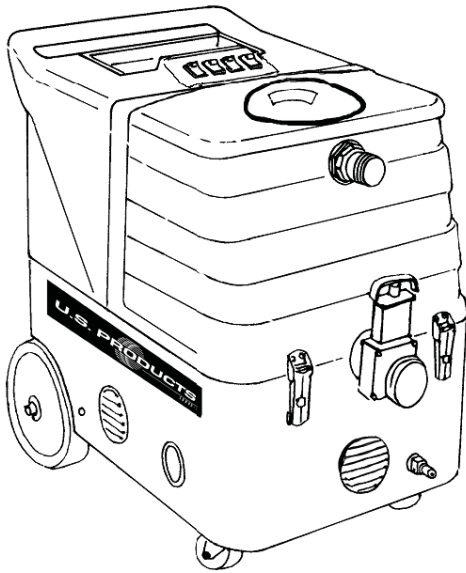




COBRA[®] EXTRACTOR 120V



INFORMATION & OPERATING INSTRUCTIONS



**DO NOT OPERATE THE MACHINE UNTIL YOU HAVE READ
ALL SECTIONS OF THESE INSTRUCTIONS
IMPROPER USE OF THE MACHINE WILL VOID THE WARRANTY**

1. Always use a defoamer when foaming occurs to prevent vacuum motor damage.
2. Keep machine from rain and snow, avoid extremes in temperatures, and store in a heated location. Use the machine indoors only.
3. Use approved chemicals only. NO SOLVENTS.
4. All extension cords must be at least size #12 (12/3) and no longer than 50 ft.
5. Never leave the machine plugged in when you are not attending it.
6. Never use water above 130° F/54° C in the solution tank.

IMPORTANT SAFETY INSTRUCTIONS

This machine is only suitable for commercial use, for example in hotels, schools, hospitals, factories, shops and offices other than normal residential housekeeping purposes.

When using any electrical appliance, basic precautions should always be followed, including the following:

NOTE: Read all instructions before using this machine.

WARNING!

To reduce the risk of fire, electric shock, or injury:

- Do not leave the machine unattended when it is plugged in. Unplug the unit from the outlet when not in use and before servicing.
- To avoid electric shock, do not expose to rain or snow. Store, and use, indoors.
- Do not allow to be used as a toy. Close attention is necessary when used near children.
- Use only as described in this manual. Use only the manufacturer's recommended attachments.
- Never add water over 130° F/54° C to the solution tank.
- Do not use with damaged cord or plug. If the machine is not working as it should, has been dropped, damaged, left outdoors or dropped into water, return it to a service center.
- Do not pull by the cord, use the cord as a handle, close a door on the cord, or pull the cord around sharp edges or corners. Do not run the machine over the cord. Keep the cord away from heated surfaces. To unplug, grasp the plug, not the cord.
- Do not handle the plug, the cord, or the machine with wet hands.
- Extension cords must be 12/3 and no longer than 50 feet. Replace the cord or unplug immediately if the ground prong becomes damaged.
- Do not put any object into openings. Do not use with any opening blocked; keep free of dust, lint, hair, and anything that may reduce air flow.
- Keep loose clothing, hair, fingers, and all parts of body away from openings and moving parts.
- Do not pick up anything that is burning or smoking, such as cigarettes, matches, or hot ashes, or any health endangering dusts. Do not use to pick up flammable or combustible liquids such as gasoline or use in areas where they may be present.
- Turn off all controls before unplugging.
- Use extra care when cleaning on stairs.
- Connect to a properly grounded outlet only.
- Liquid ejected at the spray nozzle could be dangerous as a result of its temperature, pressure, or chemical content.

INSPECTION:

Carefully unpack and inspect your COBRA for shipping damage. Each machine is tested and inspected before shipping. Any shipping damage incurred is the responsibility of the carrier. You should notify the carrier immediately if you notice damage to the box or to the machine or parts.

CLEANING SOLUTIONS:

We recommend liquid cleaning chemicals, such as our Magic Fabric Cleaner. Powder chemicals may be used, but unless mixed very thoroughly they could cause a build-up in the pump, lines, and/or quick disconnects. Any problem caused by a chemical build-up is not covered by warranty. Use a neutral cleaner with a pH between 6 and 9 to avoid premature wear of the pump, seals, and/or other components. Damage caused by the use of strong chemicals is not covered by the warranty.



DANGER: DO NOT USE SOLVENTS OR ANY CHEMICALS THAT MAY BE FLAMMABLE, EXPLOSIVE, OR COMBUSTIBLE

MAINTENANCE:

For optimum performance flush the machine with clear water at the end of each working day. Once a month, minimum, run a flushing compound through the machine to break up any mineral or chemical build-up that may have formed. U.S. Products "X-1500" is recommended. Lubricate the wheels, castors, and quick disconnects with an all purpose silicone spray. The vacuum and the pump do not require any maintenance; however the vacuum motors may require new brushes after 1000 - 1500 hours. Clean the body with an all purpose detergent, and protect it with a common auto interior protectant.

PARTS AND SERVICE:

Repairs, when required, should be performed by your authorized distributor who maintains an inventory of original replacement parts and accessories. Call the distributor from whom you purchased this machine if you need parts or service. Be sure to specify the machine model. Have your serial number handy.

Record the serial number and model of your new extractor here:

Serial Number: _____ **Model:** COBRA **Purchase Date:** _____

Write the name and phone number of your distributor: _____

OPERATION:

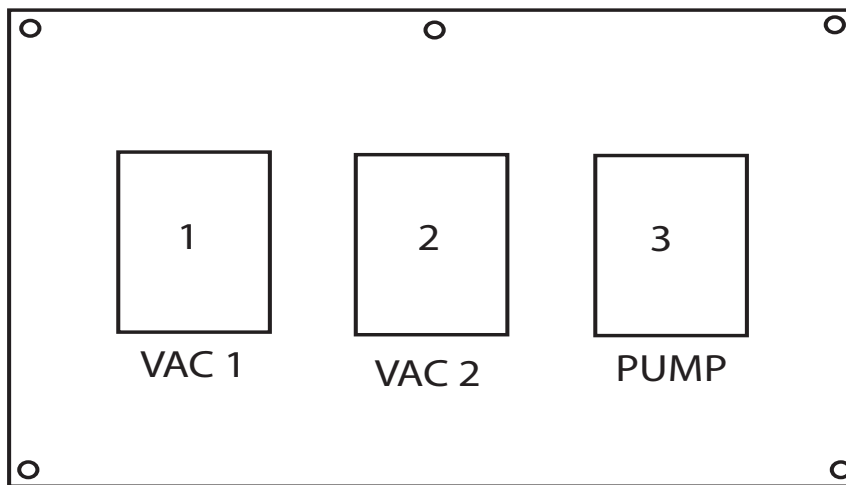
- 1 Inspect the machine, hoses, and cleaning tools for cleanliness and completeness.
- 2 Fill the solution tank with water. Using warm water may be a benefit in cleaning effectiveness, but do not use hot water (above 130° F / 54° C) in the tank.
- 3 Plug in the power cord.
- 4 Add liquid cleaning solution, with a pH of between 6 and 9, to the solution tank.
- 5 Attach the spray hose to the solution quick disconnect on the front of the machine, and connect the vacuum hose to the hose barb on the recovery tank. Attach the other ends of the hoses to the cleaning tool.
- 6 Turn the pump on. Turn the vacuums on.
- 7 Begin cleaning using the correct hoses and tool.
- 8 Use defoamer in the recovery tank any time foaming occurs.
- 9 Monitor the water level in the solution tank. Do not let the pump run dry.
- 10 When the solution tank gets low, turn both pump and the vacuums off, fill the solution tank, and empty and clean the recovery tank.
- 11 When finished with the job, remove any unused solution from the solution tank, and run a few gallons of clean water through the system. Drain the recovery tank by placing the drain gate over a bucket or drain, and pulling the gate handle up.

BALL FLOAT VACUUM SHUT-OFF

Prior to using the machine, always check that the float filter is clean and the ball can travel freely. When the recovery tank is full, the ball float will rise and will shut off the vacuum flow to prevent any more water from entering the tank. Turn off the vacuums, and empty the recovery tank.



CAUTION: to avoid vacuum motor damage, always use a defoamer any time foam is present.

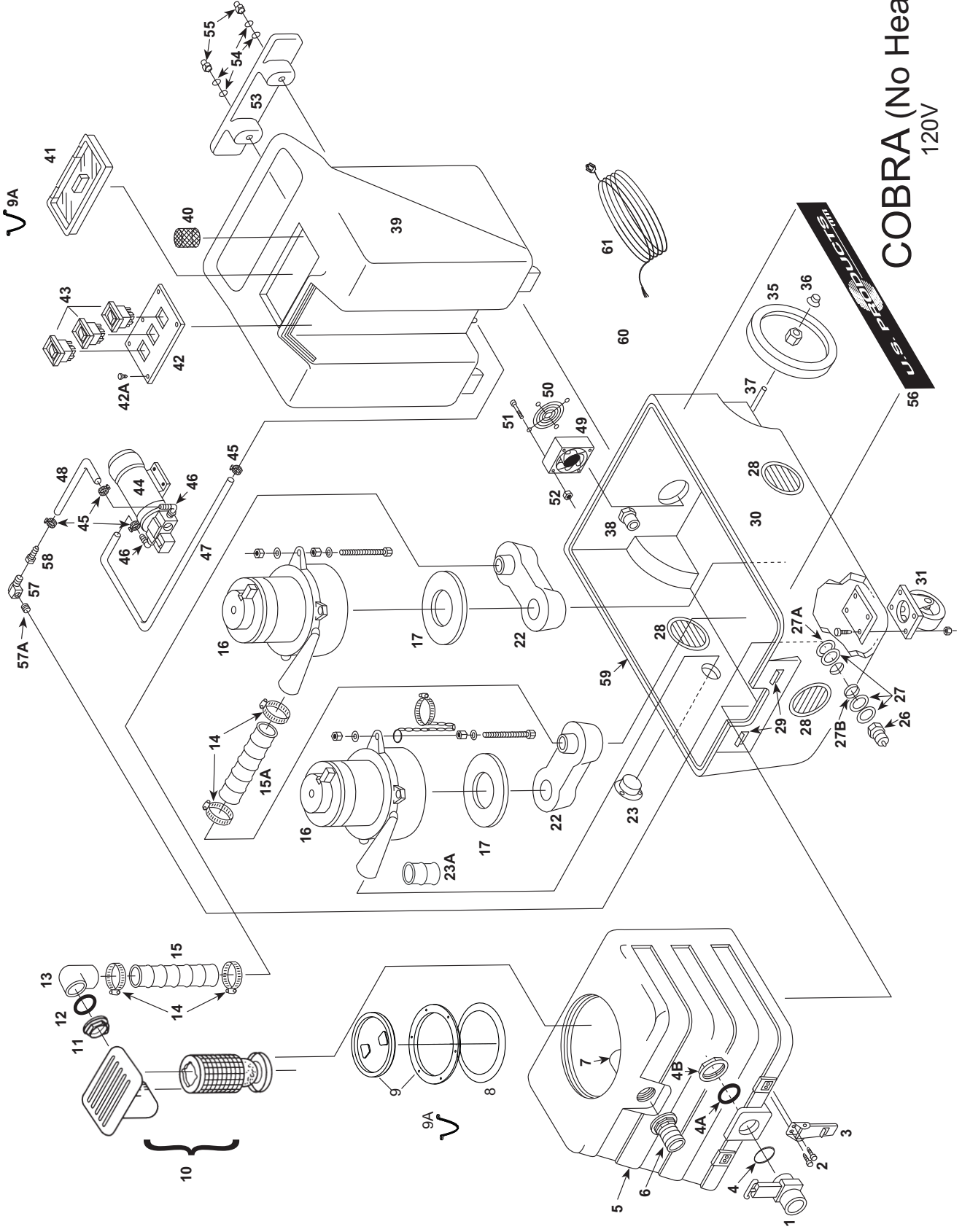


VACUUM (1), VACUUM (2), AND PUMP (3) SWITCHES:

Switches are on when illuminated.

COBRA (NO HEAT) 120V PARTS LIST

<u>ITEM#</u>	<u>PART#</u>	<u>DESCRIPTION</u>	<u>ITEM #</u>	<u>PART #</u>	<u>DESCRIPTION</u>
#1	FP231A	Drain Gate, complete	#45	166	Hose Clamp
#2	21	Screw, 8-32" X 5/8", S/S	#46	108A	Hose Barb/Elbow
#3	908	Latch	#47	FP165C	Hose, Rubber, 3/8 X 13"
#4	187	O-Ring, Small	#48	925	Hose, Rubber, 3/8 X 22"
#4A	187B	Washer, rubber	#49	2014	Fan, Cooling
#4B	185	Nut , 1-1/2	#50	2015	Guard, Fan
#5	FP208	Vacuum Tank, Complete	#51	2B1	Screw, 6-32" X 2-1/4"
#6	907	Hose Barb, 1-1/2"	#52	16	Lock Nut, 6/32"
#7	922	Elbow, PVC 1-1/2"	#53	CWBLK	Cord Wrap, Black
#8	1074	Gasket, under vac lid	#54	203	Washer, Plastic
#9	2086A	Lid and Ring	#55	260	Nut, Acorn, 3/16"
#9A	805	Chain and Hardware	#56	2001	Label
#10	FP193	Ball Float assy, complete	#57	91	Elbow, Brass, 1/4 m.p.t.
#11	185	Nut, 1-1/2	#57A	92A	Nipple, 1/4 p.t., S/S
#12	187B	O-Ring, Large	#58	318AB	Hose Barb
#13	922	PVC, Elbow, 1-1/2"	#59	FP439	Gasket, Cobra, Base
#14	156	Hose Clamp (size 28)	#60	184	Cord Retainer
#15	430B	Hose, Vacuum, Rubber 2" X 21"	#61	495A	Power Cord, 25', Yellow
#15A	FP171C	Hose, Vacuum, Rubber, 2" X 16"			
#16	FP324	Vacuum Motor, 2-Stage w/Connectors			
#17	2013	Gasket, Vacuum			
#22	MA-6	Manifold, Vacuum			
#23	FP220	Flange, Exhaust, w/Hose & Hardware			
#23A	430	Hose, 2" x 2"			
#26	45	Quick Disconnect, Male 1/4 n.p.t.			
#27	115	Washer, Fiber			
#27A	31	Washer, Brass			
#27B	116A	Bushing, nylon			
#28	928	Louver, 3" (includes screws)			
#29	909A	Latch Strike, for Latch, S/S			
#30	BS-6	Base, Cobra, Black			
#31	2002	Castor, Swivel, 3"			
#35	2003	Wheel, 8"			
#36	27A	Axle Cap			
#37	910-16.93	Axle rod			
#38	937	Reducer, PVC			
#39	HT-2	Holding Tank, Cobra			
#40	207A	Filter, Pump Inlet, 40 Mesh, S/S			
#41	901	Lid, Holding Tank			
#42	2006	Switch Plate			
#42A	28	Screw, #4 X 3/8"			
#43	FP578	Switch (all)			
#44	2007	100 PSI Pump			



COBRA (No Heat)
120V

SPECIFICATIONS:

Rotomolded Body: Lifetime Warranty
Vacuum: Two, 2-stage 5.7" vacuums
VAC Shutoff: Ball float
Pump: Demand pump, 100 psi
Waterlift: 150"
Wand: Stainless steel, single bend, twin tip
Weight: 69 lbs.
Dimensions: 26.5H x 18W x 28.75L (inches)

TROUBLE SHOOTING:

IF THIS OCCURS

CHECK THIS

NO SPRAY	Solution tank is empty. Clogged spray tip. Pump not running. Valve on wand no operating.
PUMP DOESN'T RUN	No power to pump. Test the switch. Test the Motor.
LOW SUCTION	Debris plugging cleaning tool or vacuum hose. Drain gate is not completely closed, or seals are damaged Vacuum lid is loose or damaged, or gasket is damaged.
NO SUCTION	No power to motor. Test the switch. Test the vacuum motor.

COBRA EXTRACTOR 120V

NOTES:



208-772-0573 • 800-257-7982 • FAX: 208-772-0577
VISIT US AT: <http://www.usproducts.com>