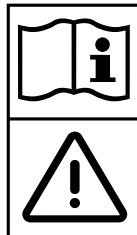
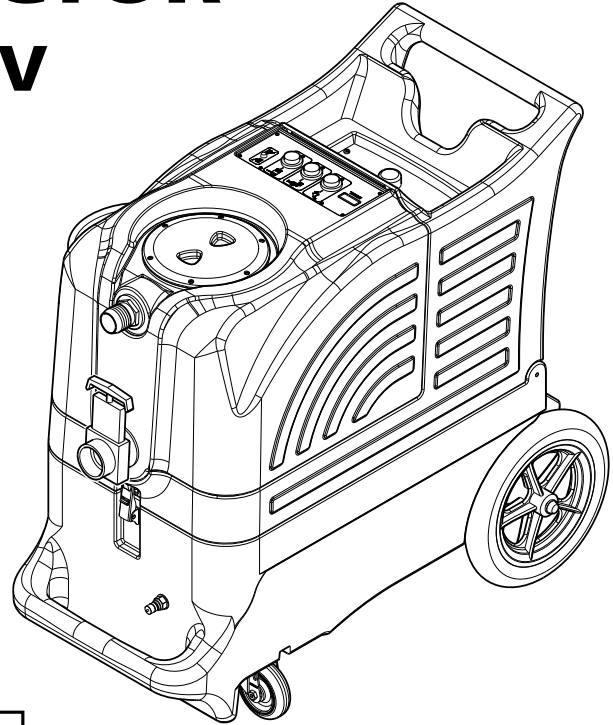




# ADVANTAGE-100H EXTRACTOR

**240V**

**INFORMATION  
&  
OPERATING  
INSTRUCTIONS**



**CAUTION: DO NOT OPERATE MACHINE UNTIL YOU HAVE READ  
ALL SECTIONS OF THIS INSTRUCTION MANUAL**



**IMPROPER USE OF THE MACHINE WILL VOID THE WARRANTY**

1. Always use a defoamer when foaming occurs to prevent vacuum motor damage.
2. Connect the machine to a properly grounded outlet only.
3. Keep machine from rain and snow, extremes in temperatures, and store in a heated location. Use the machine indoors. Do not use outdoors.
4. Use approved chemicals only. NO SOLVENTS.
5. Never use water above 54 °C/130 °F in the solution tank.

## IMPORTANT SAFETY INSTRUCTIONS

This machine is only suitable for commercial use, for example in hotels, schools, hospitals, factories, shops, and offices. This machine is not intended for normal residential housekeeping purposes.

**NOTE:** Read all instructions before using this machine.

When using any electrical appliance, basic precautions should always be followed, including the following warnings:



### **WARNING!**

#### **To reduce the risk of fire, electric shock, or injury:**

- Do not leave the machine unattended when it is plugged in. Unplug the unit from the outlet when not in use and before servicing.
- To avoid electric shock, do not expose to rain or snow. Use and store indoors.
- Do not allow to be used as a toy. Close attention is necessary when used near children.
- Use only as described in this manual. Use only the manufacturer's recommended attachments.
- Never add water over 130° F/54° C to the solution tank.
- Do not use with damaged cord or plug. If the machine is not working as it should, has been dropped, damaged, left outdoors or dropped into water, return it to a service center.
- Do not pull by the cord, use the cord as a handle, close a door on the cord, or pull the cord around sharp edges or corners. Do not run the machine over the cord. Keep the cord away from heated surfaces. To unplug, grasp the plug, not the cord.
- Do not handle the plug, the cord, or the machine with wet hands.
- Extension cords must be 14 gauge and no longer than 15 meters. Replace the cord or unplug immediately if the ground prong becomes damaged.
- Do not put any object into openings. Do not use with any opening blocked; keep free of dust, lint, hair, and anything that may reduce air flow.
- Keep loose clothing, hair, fingers, and all parts of body away from openings and moving parts.
- Do not pick up anything that is burning or smoking, such as cigarettes, matches, hot ashes, or any health endangering dusts. Do not use to pick up flammable or combustible liquids such as gasoline or use in areas where these liquids may be present.
- Turn off all controls before unplugging.
- Use extra care when cleaning on stairs.
- Connect to a properly grounded outlet only.
- Liquid ejected at the spray nozzle could be dangerous as a result of its temperature, pressure, or chemical content.

## INSPECTION:

Carefully unpack and inspect your 100H for shipping damage. Each machine is tested and inspected before shipping. Any shipping damage incurred is the responsibility of the carrier. You should notify the carrier immediately if you notice damage to the box or to the machine or parts.

## CLEANING SOLUTIONS:

We recommend liquid cleaning chemicals. Powder chemicals may be used, but unless mixed very thoroughly they could cause a build-up in the pump, lines, heat exchanger and/or quick disconnects. Any problem caused by a chemical build-up is not covered by warranty. Use a neutral cleaner with a pH between 5 and 10 to avoid premature wear of the pump, seals, and/or other components.



### **DANGER:**

**DO NOT USE SOLVENTS, OR ANY CHEMICALS THAT MAY BE FLAMMABLE, EXPLOSIVE, OR COMBUSTIBLE.**

## MAINTENANCE:

For optimum performance flush the machine with clear water at the end of each working day. Once a month, minimum, run a flushing compound through the machine to break up any mineral or chemical build-up that may have formed. The vacuum motor and the pump do not require any scheduled maintenance; however, the motor may require replacement brushes after 1000 - 1500 hours. Clean the body with an all-purpose detergent, and protect it with an automobile interior polish. Lubricate the wheels, castors, and quick disconnects with an all purpose silicone spray.

## PARTS AND SERVICE:

Repairs, when required, should be performed by your authorized distributor who maintains an inventory of original replacement parts and accessories. Call the distributor from whom you purchased this machine if you need parts and service. Be sure to specify the machine model. Have your serial number handy.

**Serial Number:** \_\_\_\_\_

**Model:** MPE-100H-240

**Purchase Date:** \_\_\_\_\_

**Write the name and phone number of your distributor:**

\_\_\_\_\_

\_\_\_\_\_

**(and be sure to register your warranty: go on-line to [www.usproducts.com](http://www.usproducts.com))**

## SWITCH PLATE

### MODEL (1):

This identifies the model of your machine.

### VACUUM SWITCH (2):

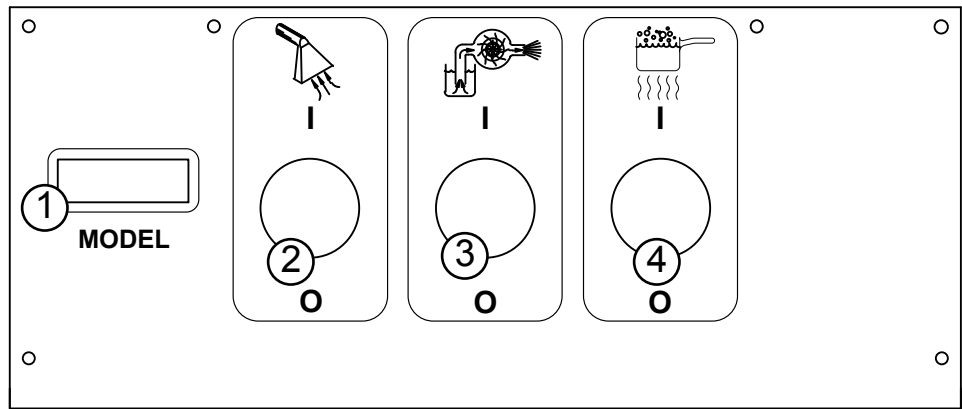
This push-button switch turns on the vacuum. The switch will illuminate when it is on.

### PUMP SWITCH (3):

The pump switch will turn the solution pump on and off, and it will illuminate when it is ON.

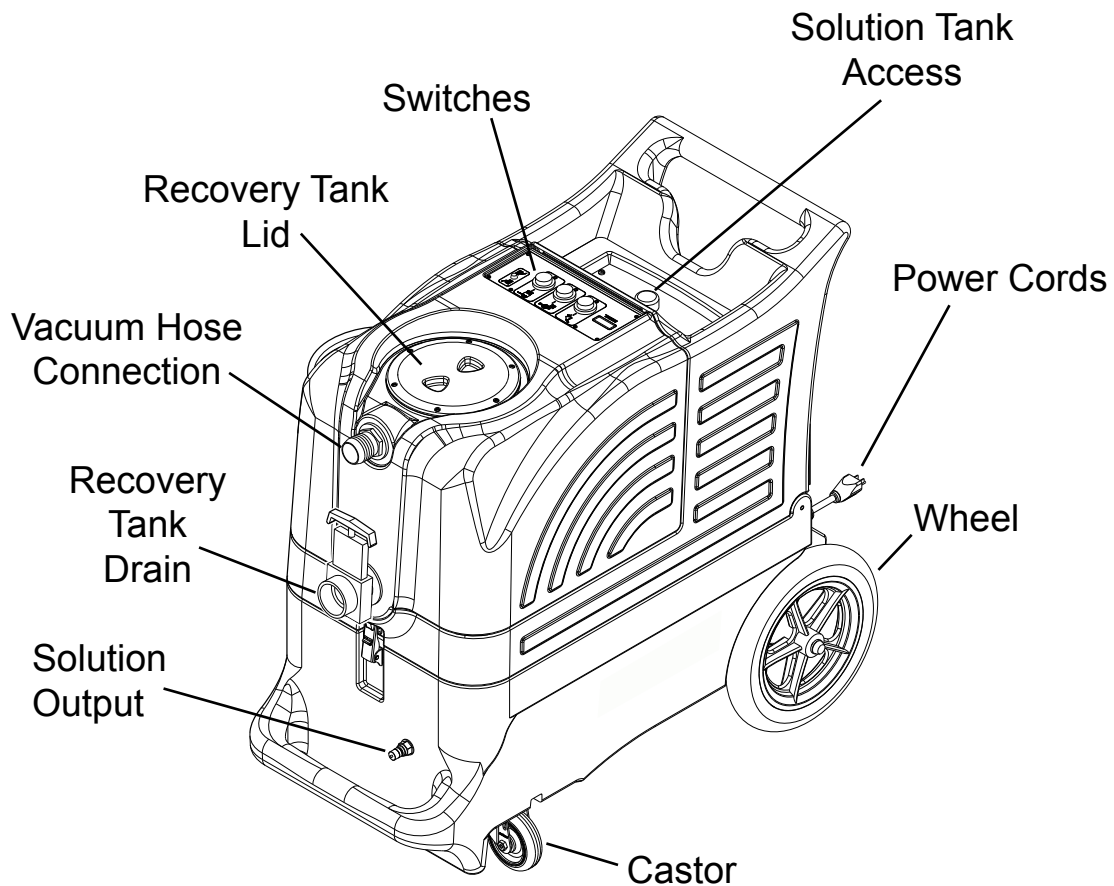
### HEAT SWITCH (4):

The heat switch will turn the heater on and off, and it will illuminate when it is turned on.



---

## YOUR MACHINE



## SET-UP & OPERATION:

1. Inspect the machine, filters, hoses, and cleaning tools for cleanliness and completeness.
2. Screw the lid on the recovery tank. Close the drain gate.
3. Fill the holding tank with clear water. Connect your tool and hoses.

**NOTE:** Although this machine is designed to supply instant hot water, the addition of warm water to the solution tank would increase heater efficiency. Never use water above 54° C/130 °F in the solution tank.

4. Turn off all the switches. Plug the power cords into properly grounded outlets. Do not connect both cords to the same outlet or you may trip a circuit breaker in the wall.
5. Turn on the pump and let some water flow through the tool. **NOTE:** The pump in your 100H will only run when you spray. A built-in pressure switch turns the pump off when there is no demand.
6. Turn on the Heat switch (4), and wait two minutes for the heat exchanger to reach temperature.  
Pre-spray traffic areas with the detergent of your choice. If you choose to add a detergent to the solution tank, be sure to mix well, and always follow the use & dilution instructions on the chemical label. Use a chemical with a pH between 5 and 10.
7. Turn on the vacuum (2).
8. Begin cleaning.
9. Use defoamer any time foaming occurs to prevent damage to the motor or other components.  
**NOTE:** Foam will not lift the ball float.
10. Monitor the water level in the solution tank. Do not let the pump run dry.
11. When the solution tank gets low, turn off the pump and the vacuum, fill the solution tank, and empty and clean the recovery tank.
12. When finished with the job, remove any unused solution from the solution tank, and run a few gallons of clean water through the system. Drain the recovery tank by opening the drain gate over a drain or a bucket. Disconnect the hoses from the cleaning tool.

**NOTE:** if the heat switch is turned on when both cords are on the same circuit, the breaker in the wall may trip.

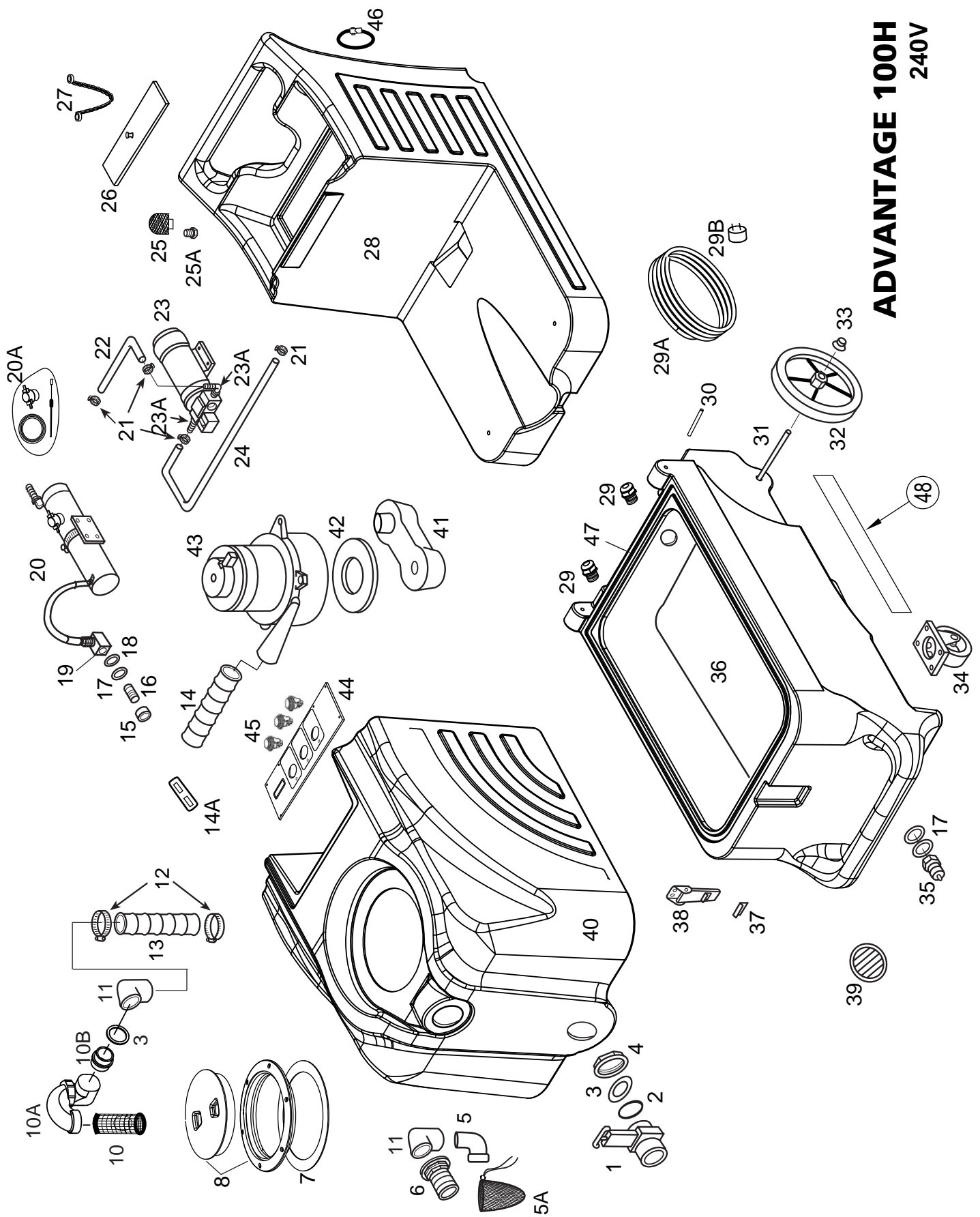
### AUTO VACUUM SHUTOFF:

When the recovery tank is full, the ball float will shut-off the suction to prevent the machine from overflowing.

**NOTE:** The float may not work if there is foam in the tank. Always use defoamer to prevent overflow.



**CAUTION: Always make sure the float cage is clean and the ball can travel freely before turning on the machine.**



**ADVANTAGE 100H**  
240V

### ADVANTAGE 100H 240V

Item	Ref. No.	Qty	Description	Item	Ref. No.	Qty	Description
1#	903USP	1	Drain Gate	25	207A	1	Filter, pump inlet
2#	187USP	1	O-Ring	25A#	92BUSP	1	Nipple, PVC
3	187B	2	Washer, rubber	26	2175	1	Lid, solution tank
4#	185USP	1	Nut, 1-1/2"	27#	805USP	1	Chain, 8"
5	1140	1	Elbow, 90°, ABS	28	TKC-6	1	Solution Tank
5A	FP619	1	Pre-filter bag	29#	230USP	2	Retainer, for power cord pigtail
6	907	1	Hose Barb, vacuum inlet	29A	2019	1	Pig-tail, power cord, 2 ft
7	1074	1	Gasket	29B#	298USP	1	Power cord, 25 ft
8	2086A	1	Lid with Ring, 6"	30	801	2	Hinge pin
	56380968	1	O-Ring for 2086A Lid	31#	910-1863	1	Axle rod (18.63" long)
10	929B	1	Ball Float, vac shut-off	32	2092	2	Wheel, 12"
10A	1154A	1	Adapter, ABS trap	33#	27AUSP	2	Axle cap
10B	1154	1	Adapter, ABS	34#	905USP	2	Castor
11#	922USP	2	Elbow, PVC, FPT	35#	45USP	1	Quick disconnect
12#	156USP	2	Hose Clamp	36	BMPE-1	1	Base compartment
13	430	25.5"	Hose, vacuum, 2"ID X 25.5"	37	909A	1	Catch, for latch
14	430A	1	Hose, vacuum, 2"ID X 13.5"	38#	56471194	1	Latch
14A	4404C	1	Bar, vacuum hose hold-down	39#	459USP	1	Louver, 2-1/2"
15	116A	1	Bushing, fiber, heat resistant	40	VT-29	1	Recovery Tank
16#	92AUSP	1	Nipple, 1/4 mpt, S/S	41	MA-6	1	Manifold, vacuum
17#	115USP	1	Washer, fiber, heat resistant	42	2013	1	Gasket, vacuum
18	31	1	Washer, brass	43	2189	1	Vacuum motor, 3 stage, 5.7"
19#	91USP	1	Elbow, brass	44	2167	1	Switch plate
20#	FP669	1	Heat Exchanger	[ ]	2167-1C	1	Overlay
20A	FP256	1	Heat Repair kit	45	1650	3	Switch, ON/OFF
21#	166USP	4	Hose Clamp	46	1603	2	Strap, cord wrap
22	925	1	Hose, 3/8" ID X 48"	47	2050	84"	Gasket, 78-1/2"
23	2017	1	Pump, 100 psi	48#	2162	2	Label Advantage Series
23A	108A	2	Hose barb/90° elbow	*	919J		Vac Hose, 1-1/2" X 15'
24	925	1	Hose, 3/8" X 11-1/2"	*	FP157		Pressure hose

\* = Optional, Not Included

[ ] = Not Shown

# = Revised or new since last update

# ADVANTAGE 100H-240

## TROUBLE SHOOTING:

<b><u>IF THIS OCCURS</u></b>	<b><u>CHECK THIS</u></b>
NO SPRAY	Solution tank is empty, or filter is plugged. Clogged spray tip. Pump not running. Valve on wand not operating. Solution hose not completely connected to hose or to machine.
PUMP DOES NOT RUN	This pump has a built-in pressure switch, so it only runs when you release the pressure by spraying. Make sure pressure has been released. Remove the hose from the outlet side of the pump and hold it over a bucket. Turn on the pump to see if water flows through the pump. If so, the problem is not in the pump.
LOW SUCTION	Debris is plugging cleaning tool or vacuum hose. Drain gate is not completely closed or seals are damaged. Vacuum dome is not seated or is damaged.
NO SUCTION	Ball in the float is blocking air flow. Turn off the vacuum so the ball will drop down. No power to motor. Does the switch light up? If not, the switch may be bad or there may be no power getting to the switch. Check wiring connections. Test the switch. Test the vacuum motor.
LOW HEAT	Spraying too long. Try spraying for 8 - 10 seconds, or about three strokes. Heat exchanger needs to be flushed. Wrong tool being used. Too much water passing through. Longer hose or larger diameter hose, than standard.
NO HEAT	Heat is not turned on. No power in the wall outlet - check to see if the breaker has tripped. No power to the heat switch - check wiring for 'opens'. No power out of heat switch. Replace switch. Call your distributor for additional help.

## SPECIFICATIONS:

Rotomolded Body: Lifetime Warranty  
 Vacuum: One, 3-stage  
 VAC Shutoff: Ball Float  
 Pump: 7 bar/100 psi, demand diaphragm pump  
 Water lift: 29.9 KPA  
 Heat: 82° C, Maximum  
 Heater: 2000 Watts  
 Weight: 35.5 kg  
 Dimensions: 45.7W x 96.5L x 87.6H (cm)