

# 56384499 CLEAR LID KIT

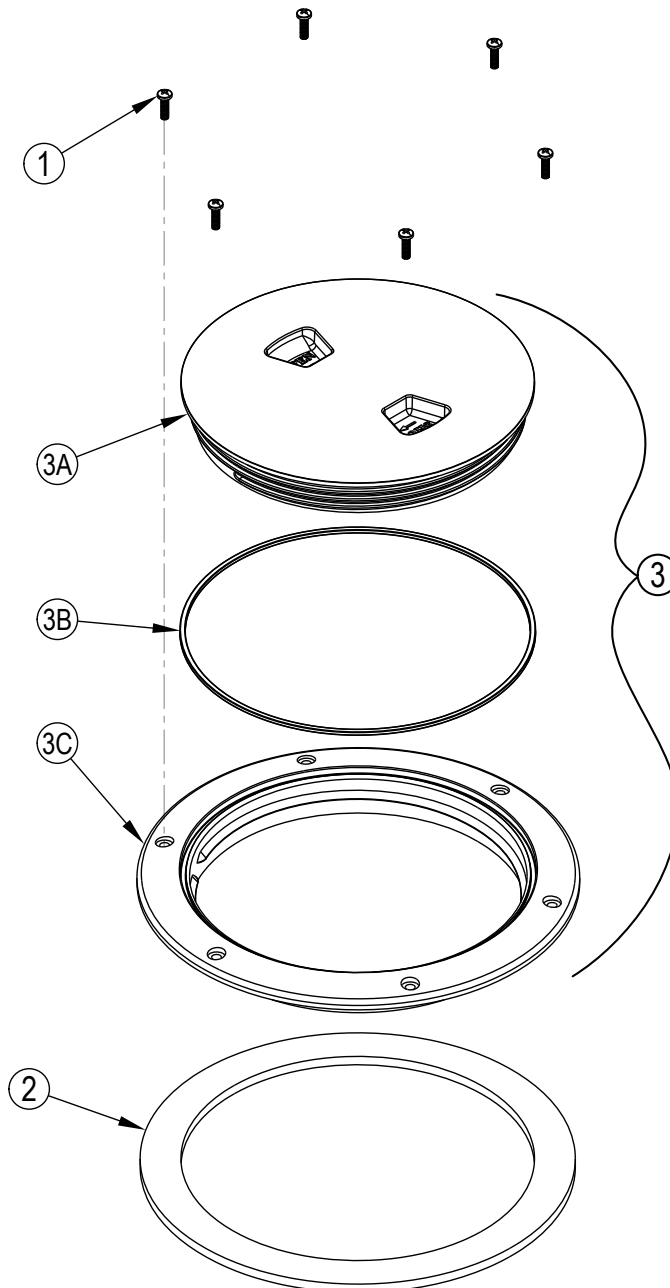
Cobra H2-H3, King Cobra 150-300-310-500-1200, Advantage 1200, BEXT Pro, ET600, HydraPort 100-200-400-1200, PEX 200-500, Terminator

## CONTENTS OF KIT

| Item | Ref. No. | Qty | Description              |
|------|----------|-----|--------------------------|
| [ ]  | 56090273 | 1   | Instruction Sheet        |
| 1    | 267      | 6   | Screw 6 X 1/2 S.M.S. S/S |
| 2    | 1074     | 1   | Gasket for Round Lid     |
| 3    | 56383435 | 1   | Lid-Clear with Ring      |
| 3B   | 56383436 | 1   | O-Ring                   |

[ ] = Not Shown

Installing this lid may involve the need to modify your recovery tank opening to accept the new lid which has a slightly larger diameter. The original lid is no longer available (not being manufactured). It has been made obsolete and replaced by this new lid.



# INSTALLATION INSTRUCTIONS

## WARNING!

DISCONNECT POWER BEFORE SERVICING.

### PREPARE THE MACHINE FOR KIT INSTALLATION

- 1 Completely drain the recovery tank.

### REMOVE EXISTING LID

- 2 SEE FIGURE 1. Unthread existing Lid (A) from ring (disconnect chain attaching it to the tank if present).
- 3 Remove the six ring mounting Screws (B) and then remove the Ring (C) from the recovery tank.
- 4 Remove the Gasket (D) and clean off any remaining adhesive.

### ENLARGE HOLE FOR NEW LID RING

- 5 Test fit the new Lid Ring (3C) into the recovery tank Opening (E). If the ring fits into the opening proceed to step 8. If the ring does not fit follow steps 6 and 7.
- 6 Carefully file or sand the Opening (E) to increase its diameter. Make small increases then re-test the fit until the opening is large enough to accept the Lid Ring (3C).
- 7 Vacuum out any shavings or debris generated from increasing the opening size. Rinse and drain the recovery tank to remove all debris.

### DRILL MOUNTING HOLES FOR NEW LID RING

- 8 Place the new Lid Ring (3C) into the tank opening. Rotate the ring so that the new mounting holes will be offset from the original mounting holes. Use the ring as a template and mark the location of the six mounting holes.
- 9 Remove the ring from the tank and drill the six new mounting holes using #19 or 5/32" drill bit. Remove debris from tank created by drilling of holes.
- 10 Mount the Gasket (2) to the recovery tank (adhesive side down). From inside the tank puncture a small hole through the gasket at the six new mounting hole locations.

### MOUNT THE NEW LID

- 11 Attach the new Ring (3C) into the tank opening using the six Screws (1).
- 12 Place the O-Ring (3B) into the Ring (3C). Then thread the Lid (3A) into Ring (3C) to complete the installation.

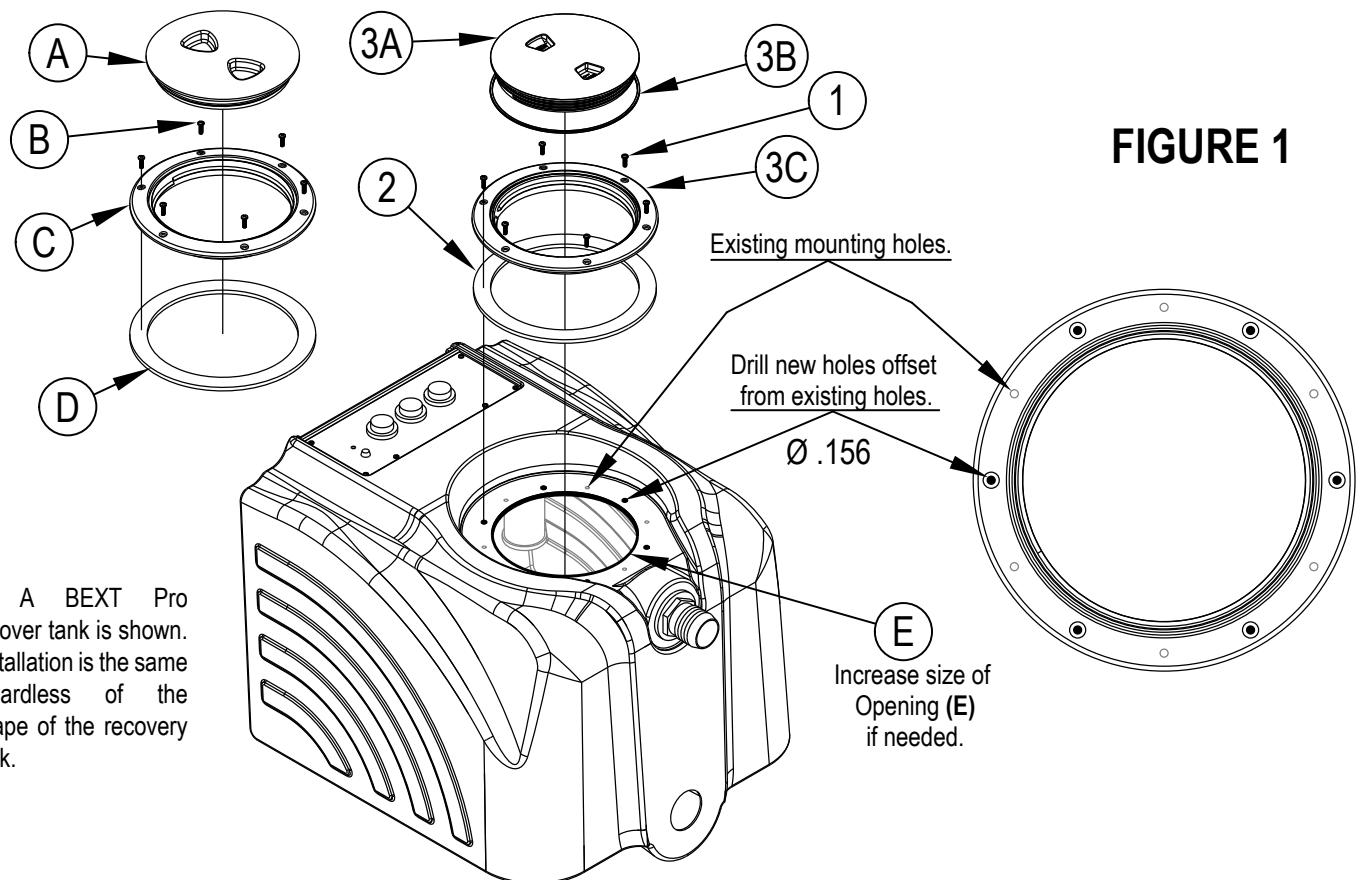


FIGURE 1

**NOTE:** A BEXT Pro recover tank is shown. Installation is the same regardless of the shape of the recovery tank.