

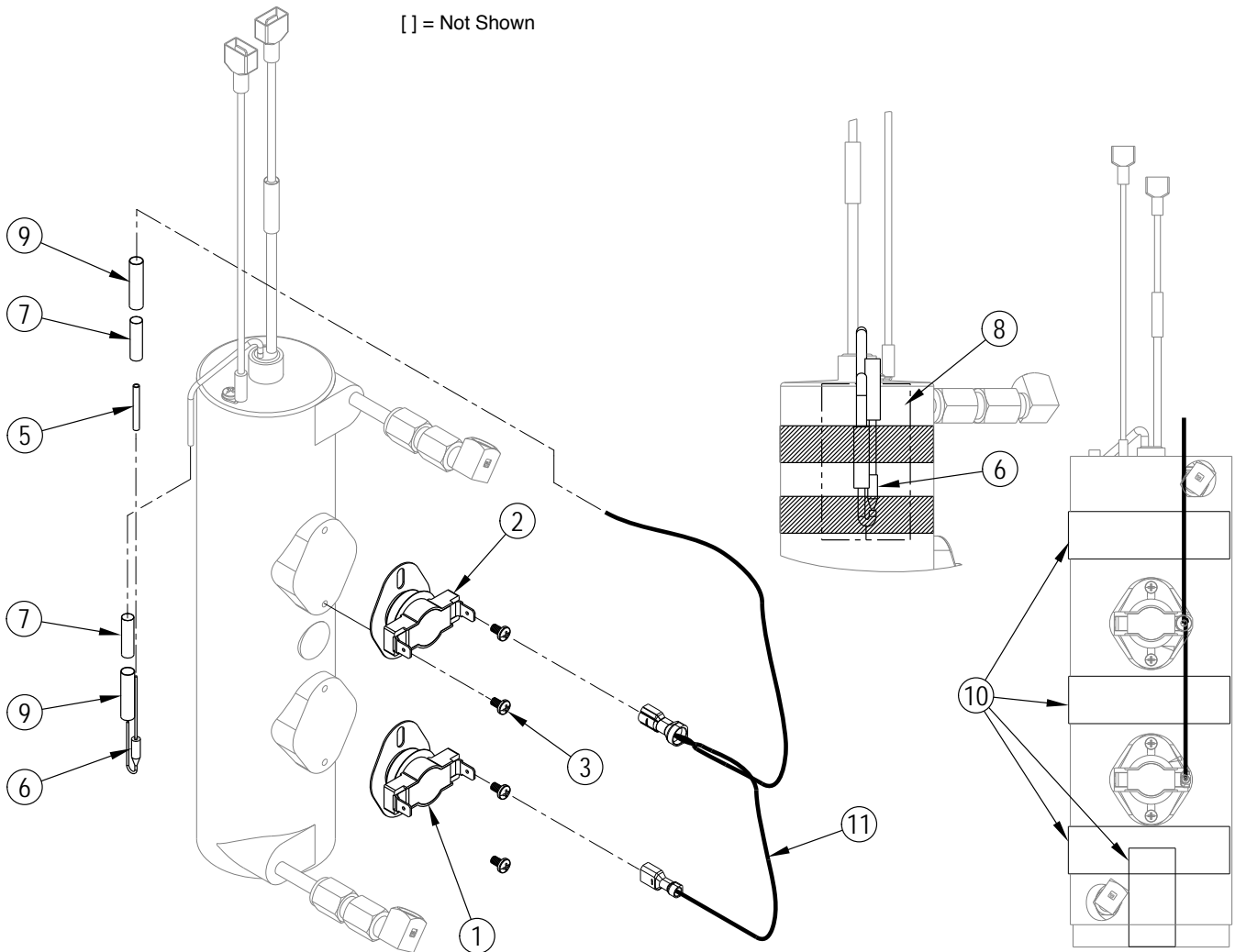
56113109 PEX HEATER REPAIR KIT

Pex 200, 500, 500-CSA

CONTENTS OF KIT

ITEM	PART NO.	QTY	DESCRIPTION
[]	56090090	1	Instruction Sheet
1	56113030	1	T-Stat Snap Action 150F
2	399	1	Thermostat Snap Action
3	3A	4	Screw 6x 1/4 Sheet Mtl. Zinc
[4]	610B	1	Thermal Compound Packet Heats
5	482	2.3 IN	Wire Insulation Teflon for 1
6	81	1	Thermal Cut-out Red 262 Deg.
7	87B	2	Elect Butt Conn 12 to 14 Step
8	452	1 IN	Tape High-Temp Electrical 13
9	445C	3 IN	Shrink Tubing 1/4 I.D. Black
10	605B	36 IN	Tape High Temp. 1 Wide X 72
11	56113047	1	Harness-Heater
[12]	B	1	Thermal Cutout Replacment Instruction Sheet

[] = Not Shown



INSTALLATION INSTRUCTIONS



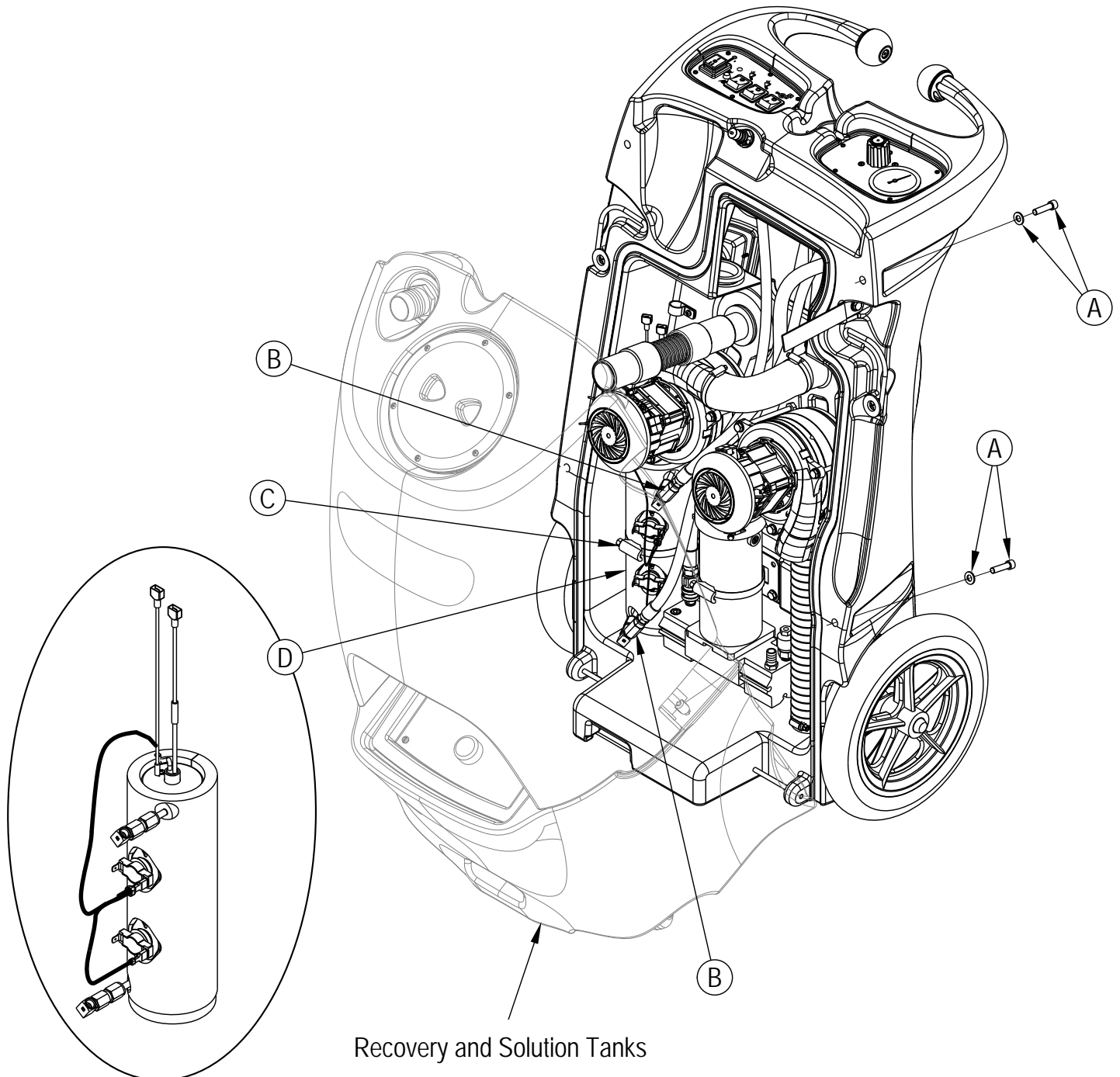
WARNING!

UNPLUG THE UNIT FROM THE OUTLET PRIOR TO SERVICING OR PERFORMING ANY MAINTENANCE ON THE MACHINE AND WHEN REPLACING PARTS.

REMOVE HEAT EXCHANGER FOR REPAIR

- 1 See **Figure 1**: Remove the (4) Socket Head Screws and Washers (**A**) from the back of the machine as shown.
- 2 The Recovery/Solution Tank is hinged at the bottom and can be tilted open to gain access to the Heat Exchanger (**D**) without having to remove the tanks.
- 3 Disconnect the Heat Exchanger spade connectors from the terminal block.
- 4 Disconnect the Hoses (**B**) from the Heat Exchanger (**D**) and loosen or remove the Hose Clamp (**C**) to remove the heat exchanger from the machine for repair.

FIGURE 1



INSTALL HEAT EXCHANGER REPAIR KIT

- 1 **See Figure 2:** To replace the Thermal Cutout Components (5, 6, 7, & 9) refer to the Instruction Sheet B item (12) from the Pex Heater Repair Kit 56113109.
- 2 Apply High Temp Electrical Tape (8) in the area shown before replacing the Thermal Cutout (6) so that it is installed under the thermal cutout before re-installing the heater wrap.
- 3 If you are replacing Thermostats (1, & 2) apply the Thermal Grease (4) to the mounting surface (E) prior to replacement using the (4) Screws (3).
- 4 To install the replacement Heater Harness (11), plug the spade connectors into the Thermostats (1, & 2). The nonterminated wire end attaches to the Thermal Cutout (6) using (1) Butt Connector (7) and Shrinktube (9) to assemble the harness to the newly replaced Thermal Cutout (6).
- 5 After repairing the Heat Exchanger (D) use the High Temp Tape (10) to reinstall the heater wrap foam to the outside of the heat exchanger as shown.
- 6 **See Figure 1:** Reinstall the repaired Heat Exchanger (D) back into the machine using the steps in reverse order.
- 7 Follow the instructions in the Operating The Machine section of your manual to test the repaired heat exchanger.

FIGURE 2

