

## HydraShelf™ Chemical Shelf Installation Instructions

**PN: 000-079-300**

FORD TRANSIT .....	pages 4 – 17
DODGE PROMASTER .....	pages 17 - 22
SHELF MOUNTING SUGGESTIONS .....	pages 23 - 24

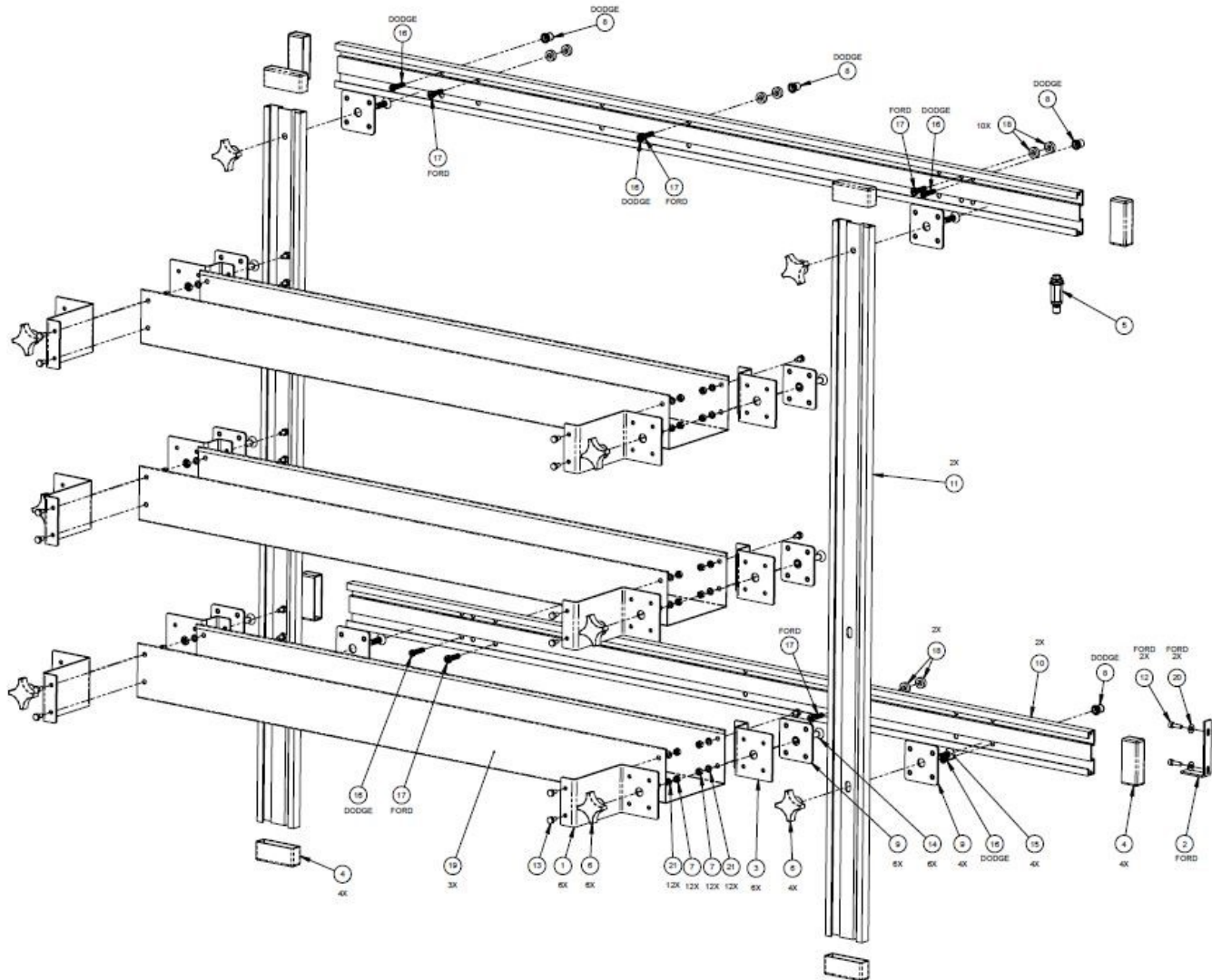
### Recommended tools:

- One 6mm Allen wrench \*
- One 5/32 Allen wrench \*\*
- Two 7/16 wrenches
- 1.25-hole saw
- Tape rule
- Framing square
- Step drill - w/9/16 step \*\*
- Rivet nut installation tool (HM part number 000-078-165) \*\*

Approximate time to complete: 1 hour

\* Ford

\*\* Dodge



- NOTES:
1. ITEM (8) & (16) USED ON DODGE PROMASTER  
ONLY. USE (5) TO INSTALL ITEM (8). ITEM (17)  
USED ON FORD TRANSIT ONLY.

Parts Break Down and Picksheet:

ITEM NO.	PART NO.	DESCRIPTION	QTY.	PARTS PICKED
1	000-015-1387	BRACKET, MODULAR RACK LONG	6	
2	000-015-1388	BRACKET, MODULAR RACK MOUNT	1	
3	000-015-1386	BRACKET, MODULAR RACK SHORT	6	
4	000-027-130	CAP, 3/4" x 3.125" VINYL	8	
5	000-078-165	KIT, 5/16" THREADED RIVET TOOL	1	
6	000-061-015	KNOB, ADJUSTING	10	
7	000-094-010	NUT, 1/4"-20UNC HEX S/S	24	
8	000-094-145	NUT, 5/16"-18UNC RIVET	5	
9	000-105-786	PLATE, RACK SYSTEM	10	
10	000-114-300	RAIL, RACK TOP/BOTTOM - FORD/DODGE	2	
11	000-114-301	RAIL, RACK VERTICAL - FORD/DODGE	2	
12	000-143-077	SCREW, M6 X 1 X 20MM LG. SOCKET HEAD	2	
13	000-143-333	SCREW, 1/4"-20UNC x 0.50" LG. S/S HEX HEAD	24	
14	000-143-711	SCREW, 3/8"-16UNC x 1.00" LG FLAT HEAD SOCKET	6	
15	000-143-770	SCREW, 3/8"-16UNC x 1.25" LG. FLAT HEAD SOCKET	4	
16	000-143-757	SCREW, 5/16"-18UNC X 1.25" LG. SOCKET LOW HEAD	5	
17	000-143-780	SCREW, 8M X 1.25 X 30M LG. SOC LOW HEAD	5	
18	000-154-230	SPACER, 3/8" ID X 3/4" OD X 1/4" LG. ALUM	10	
19	000-166-057	TRAY, THREE TIER - 47"	3	
20	000-174-003	WASHER, 1/4" FLAT S/S	2	
21	000-174-019	WASHER, 1/4" LOCK S/S	24	

## FORD TRANSIT

Kit includes:

QTY.	PART NO.	DESCRIPTION
6	000-015-1386	BRACKET MODULAR RACK SHORT
6	000-015-1387	BRACKET MODULAR RACK LONG
1	000-015-1388	BRACKET MODULAR RACK MOUNT
8	000-027-130	CAP 3/4 X 3.125 VINYL
10	000-061-015	KNOB-ADJUSTING
24	000-094-010	NUT 1/4 20 S/S HEX
10	000-105-786	PLATE RACK SYSTEM
2	000-114-300	RAIL RACK TOP/BTM FORD PASSNGR
2	000-114-301	RAIL RACK VERTICL FORD PASSNGR
2	000-143-077	SCREW 6MM X 20MM SOCKET HEAD CAP
24	000-143-333	SCREW 1/4 20 X 1/2 S/S HHCS
6	000-143-711	SCREW 3/8 16 X 1 FLT SCKT HD
4	000-143-770	SCREW 3/8-16 X 1.25 FLT SOC HD
5	000-143-780	SCREW 8MM X 1.25 X 30MM SOC LOW HD
5*	000-154-230	SPACER 3/8ID X3/4OD X1/4LG AL
3	000-166-057	TRAY THREE TIER 47 CDS
1	000-174-003	WASHER - 1/4 ID FLAT S/S
24	000-174-019	WSHR 1/4 S/S LOCK

- Vans equipped with additional insulation on the walls may need 10 spacers. Double up the spacers to clear the insulation.

How to locate the threaded mounting locations if your vehicle is equipped with insulation.  
(If your vehicle is not equipped with insulation go to page 7)

Locate upper seat belt mounting points



Measure 13" from the rear door post



Measure 7.25 inches down

Mount the top rail using the first mounting location. Use the rail to locate the horizontal location for the other two holes.

Measure 7-1/4" down from the ceiling to get the exact location.



Locate lower seat belt mounting points  
Measure 24 inches from the back door pillar



Measure 10-5/8" from the top of the wheel well



**HINT:** Insert the first fastener into the rail and use the other holes in the rails to locate the other mounting hole locations.

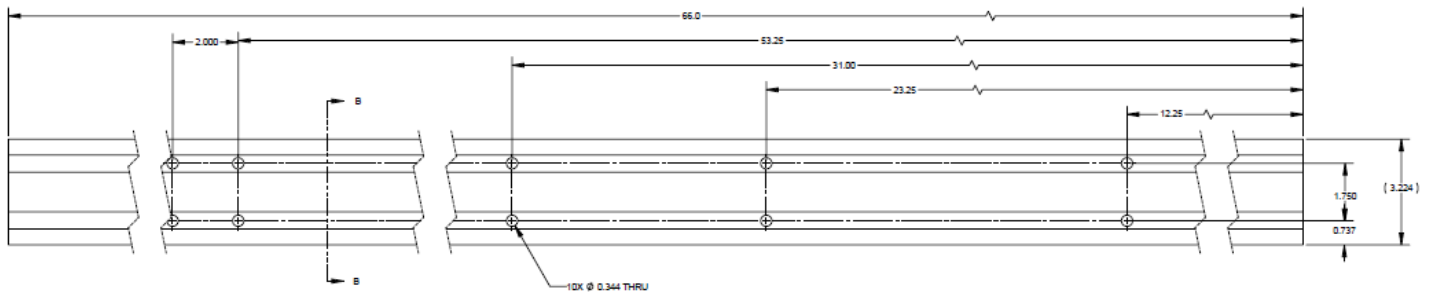
Measure up 20-7/8" from the floor to locate the second lower rail mounting location.



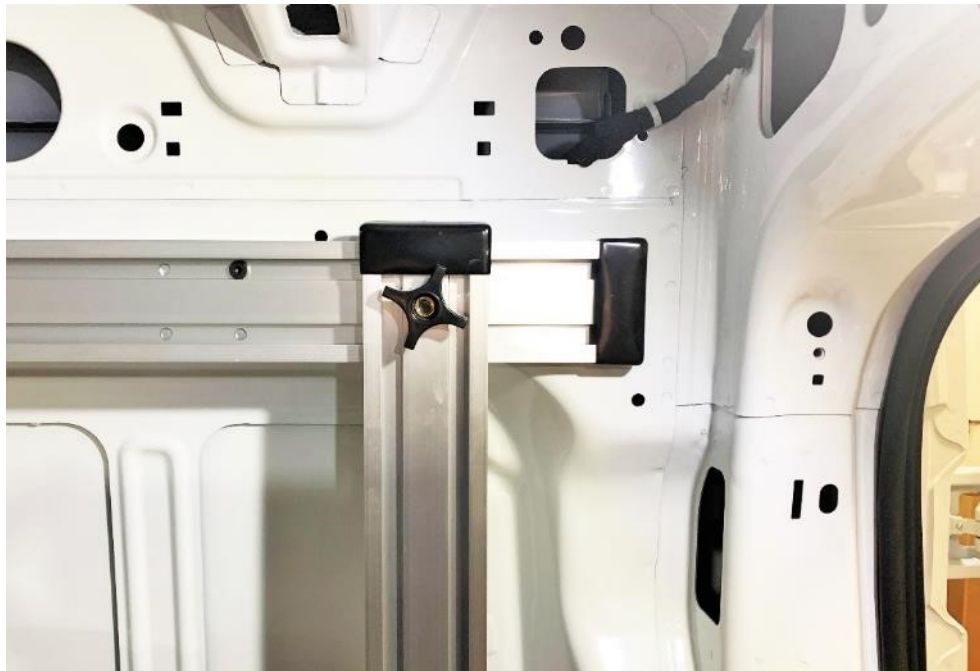
Drill 1.25 holes



## Mount top rail



Install the top rail with the top set of holes. The rack attaches to the existing seat belt anchor points. Align the holes toward the rear of the van as shown.





Place one spacer on the back side of the rail on the first mounting hole.

**Hint:** using a piece of tape to hold the spacer in position works well.



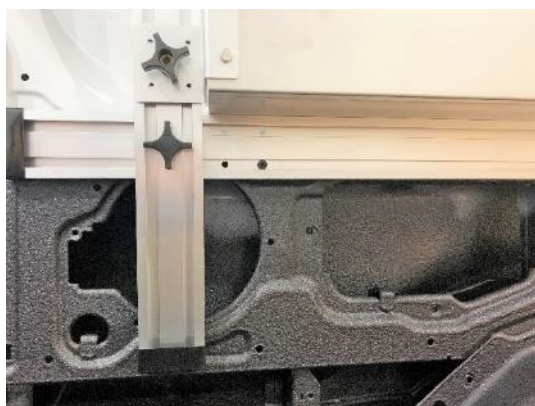
Two spacers may be required if the van has insulation on the side panels.





Mount the bottom rail in the same manner as the top rail only using the bottom set of holes.

The bottom rail only uses two of the mounting holes. *Note: if the van has been coated like in this image the threaded holes may need to be cleaned out or tapped before you can insert the fastener (8mm x 1.25).*



Install two sliding plates in the top rail and two sliding plates in the bottom rail.



Hang the vertical members



To locate the first vertical member, measure 8.5 inches from rear door pillar and secure the top clamp.



Square the vertical member and secure the vertical member to the sliding plate in the lower rail.

Measure over from the first (rear) vertical member 47-3/8" to locate the second vertical member.



Insert sliding plates for shelves





Assemble the shelves

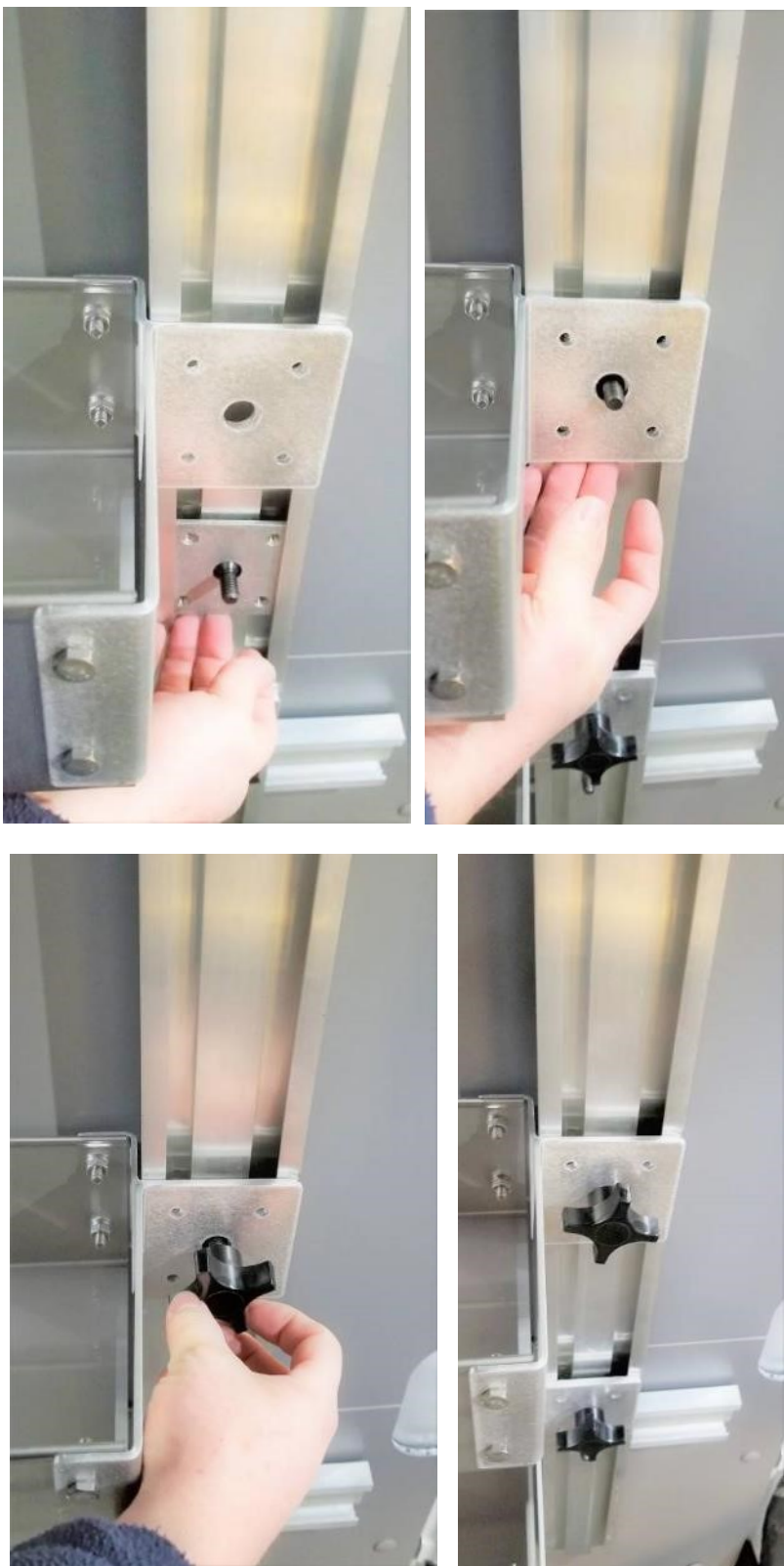


Hang the shelves.

**HINT:** If your van does not have insulation on the sides the shelves can be hung with the long side out, or the short side out as shown below.







Install the caps on the ends of the rails.



For additional support install the angle bracket supplied in the kit as shown below



## Dodge ProMaster

Kit includes:

QTY.	PART NO.	DESCRIPTION
6	000-015-1386	BRACKET MODULAR RACK SHORT
6	000-015-1387	BRACKET MODULAR RACK LONG
8	000-027-130	CAP 3/4 X 3.125 VINYL
10	000-061-015	KNOB-ADJUSTING
24	000-094-010	NUT 1/4 20 S/S HEX
5	000-094-145	NUT 5/16 RIVET
10	000-105-786	PLATE RACK SYSTEM
2	000-114-300	RAIL RACK TOP/BTM FORD PASSNGR
2	000-114-301	RAIL RACK VERTICL FORD PASSNGR
24	000-143-333	SCREW 1/4 20 X 1/2 S/S HHCS
6	000-143-711	SCREW 3/8 16 X 1 FLT SCKT HD
5	000-143-757	SCREW 5/16-18 X 1.25 SOC LOW HD
4	000-143-770	SCREW 3/8-16 X 1.25 FLT SOC HD
5*	000-154-230	SPACER 3/8ID X3/4OD X1/4LG AL
3	000-166-057	TRAY THREE TIER 47 CDS
1	000-174-003	WASHER - 1/4 ID FLAT S/S
24	000-174-019	WSHR 1/4 S/S LOCK

- Vans equipped with additional insulation on the walls may need 10 spacers. Double up the spacers to clear the insulation.

The Dodge ProMaster has an upper and lower accessory mounting rail



The lower rail may be hidden behind wall panels





The upper rail mounts to the fourth accessory hole from the back of the van. Determine the other 2 mounting locations by using the rail as a guide. Two additional octagonal holes should line up with the holes in the top rail.



On the lower rail measure over 11.5" from the center of the cargo ring near the rear door to locate the first mounting location.



Measure over 58.875" from the center of the cargo ring near the rear door to locate the second mounting location.



Drill out the octagon holes that correspond to the mounting rail holes to 9/16" with a step drill.

Install the 5/16-18 rivet nut into the hole using the tool provided in the kit. The tool comes with the first insert installed. Place the insert into the 9/16 hole and hold the center hex with a 7/8 wrench. Turn the head of the 5/16 bolt with a 1/2 wrench or impact. Keep turning the bolt until the insert is tight.

Complete the installation as described on pages 7-16



Additional mounting accessories are available.



